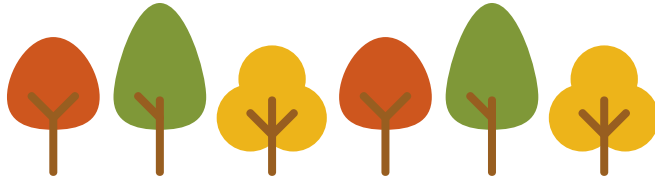


# APPENDIX B: PLAN A PLANT



Renfrew County has five plots that need to be planted with trees. As the county forester, it is up to you to decide what species of tree will be planted on each site, and how many you can fit in each given area given planting constraints.

As outlined in the video on [Sustainable Forest Management](#) you will have the option to plant one of two different species based on the characteristics of each site. These species are red pine and white spruce. Red pine prefers sandy soils with good drainage. White spruce can tolerate a variety of soil conditions, and all drainage types except dry conditions.

Each tree should be given a space of 2 m x 2 m to grow properly. This spacing means that each planted tree will take up 4 m<sup>2</sup>. The stands are measured in hectares (ha), a unit of measurement where 1 ha is equal to 10,000 m<sup>2</sup>. See the map on the second page for a visualization of what these sites look like from above.

Fill out the table below with species and # trees for each stand on the map to help plan the 2020 Renfrew County Tree Plant!

| Stand ID # | Stand Area (ha) | Drainage | Soil  | Light | Species to plant | # of trees |
|------------|-----------------|----------|-------|-------|------------------|------------|
| 1          | 6.8             | Good     | Sandy | Full  |                  |            |
| 2          | 1.5             | Moderate | Loamy | Full  |                  |            |
| 3          | 2.5             | Good     | Sandy | Full  |                  |            |
| 4          | 2.3             | Good     | Sandy | Full  |                  |            |
| 5          | 4.1             | Moderate | Loamy | Full  |                  |            |

# Renfrew County Forest Tree Plant

