



## RENTAL TIMES

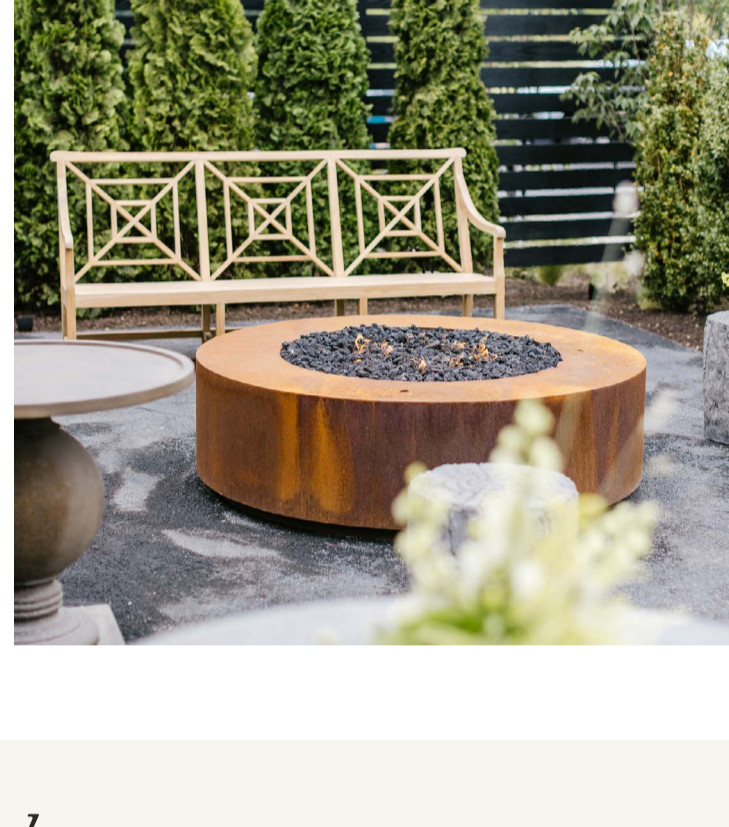
We offer **brunch showers** from 11:00 AM - 2:00 PM and **evening dinner showers** starting as early as 4:30 PM, 5:00 PM, 5:30 PM, 6:00 PM or 6:30 PM.

## INCLUSIONS IN THE VENUE

**Brunch:** \$750 (\$250 per hour)

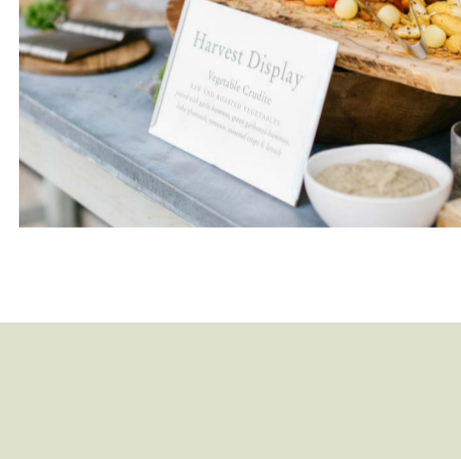
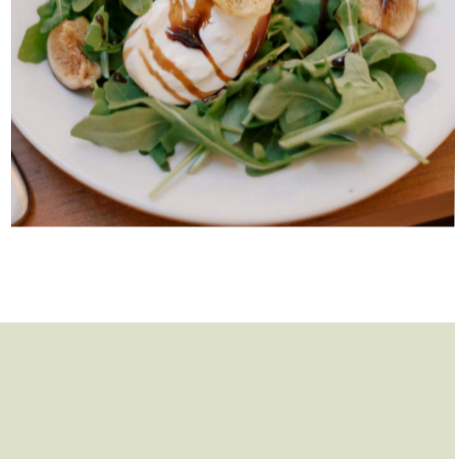
**Evening Dinner:** \$650 (\$215 per hour)

Your terrain shower includes exclusive use of our stylized venue for three hours. Within the venue we have farmhouse tables, high top tables, bars, welcome signage, a fire-pit, full place settings on your reception tables with personalized menu cards, cotton napkins and dedicated parking for your guests. The venue is lined with market lights throughout. Please note that the venue photos below include centerpieces and décor that is personalized to the event. Please see the “Not Included” section, which indicates the items you are permitted to bring in for your shower. We do not include tabletop flowers and personalized decorations within your venue rental. Our goal at terrain is to give you a beautiful setting for you to enhance where necessary.



## FOOD & beverage

Your culinary package starts at **\$50** per person and includes a welcoming stationary display or three passed appetizers for your guests. Once your guests have all arrived, we will get seated for a first and main course (served on a signature terrain buffet) followed by dessert. At the bar we will have a beverage package available to include: white wine, rosé, sparkling wine, plus mimosas & bloody mary’s. The bar package is **\$25 per adult** (\$8 per adult per hour for a 3-hour rental).



## MENU

[Click here to view our brunch menu.](#)

[Click here to view our dinner menu.](#)

## SUPPORT FROM TERRAIN

Starting 2-3 months before your shower, a dedicated member of our team will work with you one-on-one with three planning appointments over the phone. In each call we will discuss your floor plan, menu selection, and day-of timeline (arrival, games, speeches, toasts, etc.). On the day of the shower, our terrain team will be there to oversee your timeline, culinary and bar.

## PRICING

Includes the **Venue Rental Fee + the Price Per Adult & Open Bar + Tax and Service.**

### WEEKEND BRUNCH SHOWER

\$750 Venue Rental Fee

\$2,500 Adult Menu (50 guests x \$50 per guest)

\$1,250 Bar Menu (50 guests x \$25 per guest)

**\$4,500 Subtotal / Minimum Commitment Spend**

+ \$787.50 Service 21% for Terrain Waitstaff

+ \$242.25 PA Tax 6%

**\$5,529.75 Estimated Total for 50 Adult Guests**

The minimum commitment spend is \$4,500 before tax and service.

The rental fee and price per adult apply to the minimum. To meet the minimum you can have 50 guests at \$50 per guest or less guests

and select the \$55 per guest menu or select menu upgrades and enhancements for the value of the spend.

### WEEKEND EVENING DINNER SHOWER

\$1,200 Venue Rental Fee

\$2,475 Adult Menu (45 guests x \$55 per guest)

\$1,125 Bar Menu (45 guests x \$25 per guest)

**\$4,800 Subtotal / Minimum Commitment Spend**

+ \$756 Service 21% for Terrain Waitstaff

+ \$333.36 PA Tax 6%

**\$5,889.36 Estimated Total for 45 Adult Guests**

The minimum commitment spend is \$4,800 before tax and service.

The rental fee and price per adult apply to the minimum. To meet the minimum you can have 45 guests at \$55 per guest or less guests

and select menu upgrades and enhancements for the value of the spend.

## NOT INCLUDED & for you to bring

We do not include tabletop flowers, balloons, and personalized décor (games, signage etc.). We also do not include setup for personalized decorations on the day of the shower. If you plan to bring balloons and tabletop flowers, as the host we welcome you to arrive 60 minutes beforehand to set up. For music, we can turn on our in-house station as background music. If you have a preferred station, playlist, or genre, we welcome you to bring in your own Bluetooth speakers for you to control your music preferences.

