

DALMORE  
FLOORPLAN



# COPPERCREEK

Copper Creek Community Image



717 COPPER CREEK LANE, WEXFORD, PA 15090

Available Now \$3,250,000 | 7 bedrooms | 7.5 bathrooms | 4-car garage | 3 stories | North Allegheny School District

Just when it seemed every homesite in this exquisite community had been snatched up for good, an unexpected FINAL CHANCE has emerged... this SURPRISE opportunity is the absolute epitome of saving the very, VERY best for last.

Don't miss your chance on this stunning new estate home situated on an INCREDIBLE quiet cul-de-sac homesite.

From the moment you arrive at this exceptional property, you'll be captivated by the breathtaking setting of prestigious Copper Creek, widely regarded as the most upscale, sought-after & magazine-worthy enclave north of Pittsburgh. Step into this luxurious custom Eddy Home through a grand foyer with soaring ceilings, leading to a great room featuring a majestic stone fireplace & expansive window wall that frames breathtaking views of your 4+ acre estate. The chef's kitchen, a masterpiece of design, dazzles with dual 10' islands, quartz countertops, butler's pantry & upscale finishes that elevate everyday living. Owner's suite is an unparalleled retreat, offering a private balcony, 2 oversized custom closets & spa-inspired bathroom with premium design. The finished 3rd floor provides an elegant private suite, while the walkout basement boasts a theater room, fitness space, full bar & more.

Join the Copper Creek life of luxury by making this hidden gem at 717 Copper Creek Lane, Wexford your own!



EDDY HOMES  
EST. 1971

# COPPERCREEK

717 Copper Creek Lane, Wexford, PA 15090



## Details & Luxury Enhancements

-  Traditional Single-Family Home
-  7 Bedrooms
-  7 Baths & 1 Half Bath
-  8,713 SqFt

### KITCHEN DESIGN FEATURES

- Quartz Countertops
- Oversized Double Islands
- Soft Close Doors/Drawers & Dovetail Construction
- Stacked Cabinetry To Ceiling
- Glass Door Fronts
- Decorative End Panels
- 48" Cooktop With Chimney Hood
- Oversized Refrigeration
- Undercabinet Lighting
- Butler's Pantry

### EXTERIOR FEATURES

- Elements Hand Selected By Design Team
- European Elevation with Stone and Brick Façade
- James Hardie Cement Horizontal Siding
- James Hardie Cement Vertical Board and Batten
- Dimensional Architectural Roof Shingles
- Wood Casement Windows
- Flower Boxes
- 4-Car Side Entry Garage
- Walk-Out Foundation with Patio at Grade Level
- Oversized Deck Off Of Morning Room
- Separate Covered Patio with Outdoor Gas Fireplace

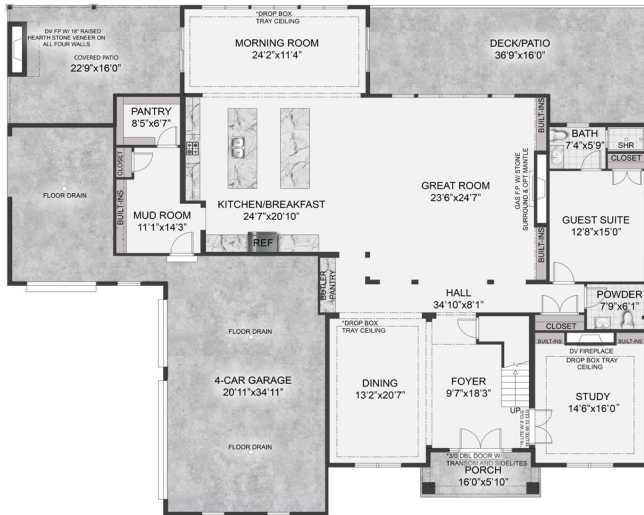
### INTERIOR FEATURES

- Two Story Foyer
- Two Story Great Room
- Two Story Stone Fireplace In Great Room With Raised Hearth and Oversized Mantle.
- Handcrafted Built Ins Flanking Fireplace
- Oversized Kitchen
- Handcrafted Mudroom Locker Built-Ins
- Study with Gas Fireplace and Handcrafted Built-ins
- Main Level Guest Suite
- Large Two-Story Window Wall in Great Room.
- Juliette Balcony Overlooking Wooded Lands
- Tray Ceilings In Foyer, Study, Great Room, Dining Room, & Owner's Suite Bedroom
- Finished Lower Level With Windows and Walk-Out That Includes Generous Size Wet Bar, Open Recreation Room, Full Bathroom, Exercise Room, Theater Room, & Storage
- 10' Ceilings Throughout First Floor
- 6' Windows Throughout First Floor
- 9' Ceilings Throughout Second Floor
- Large Rec Room on Third Floor with Full Bedroom and Bath.

# COPPERCREEK

717 Copper Creek Lane, Wexford, PA 15090

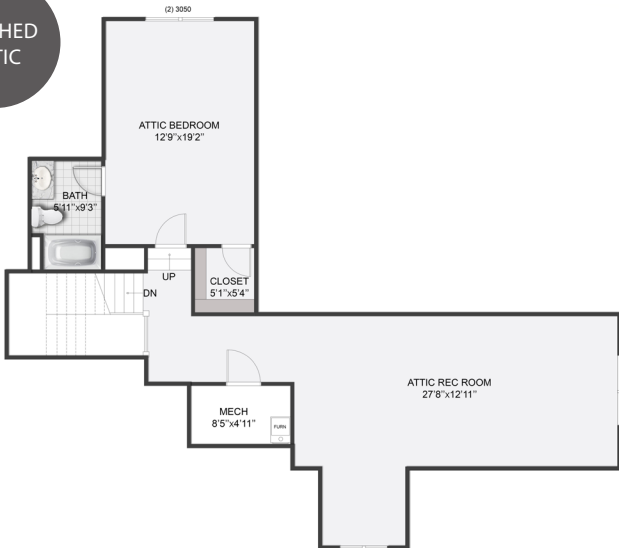
## FIRST FLOOR



## SECOND FLOOR



## FINISHED ATTIC



## LOWER LEVEL



EDDY HOMES

EST. 1971

888-805-EDDY (3339) • CopperCreek@eddyhomes.com

Visit EddyHomes.com



\*Interior images, used for illustration purposes

# COPPERCREEK

717 Copper Creek Lane, Wexford, PA 15090



\*Interior images, used for illustration purposes