

# Getting a car through the Motability Scheme



# Find your car at motability.co.uk



Home

Beach day

Warming cuppa

We are Motability Operations Ltd, a company authorised and regulated by the Financial Conduct Authority. All Motability Scheme vehicles are leased to customers by Motability Operations Limited.

# Welcome to all-inclusive motoring

Join the Motability Scheme, and you'll get more than just a car. Our lease package takes care of everything from insurance to servicing and MOTs.

## Are you eligible?

You can join the Scheme if you receive a higher rate mobility allowance and have at least 12 months left. If you're a parent or guardian of a child aged three or over, you can also apply on their behalf.

To check if you're eligible, head to [motability.co.uk/allowances](https://motability.co.uk/allowances)

## You choose who drives

You can insure up to three drivers on your car. So, even if you do not drive, you can still take advantage of the Scheme.

Find out more about who can drive at [motability.co.uk/drivers](https://motability.co.uk/drivers)

## We're the service that keeps you moving

Join over 860,000 Scheme customers who are already enjoying the freedom that comes with the Motability Scheme.

## How it works

Simply exchange your qualifying mobility allowance for a brand-new car, with all of this included:

- ☀ Insurance cover
- ☀ Servicing and repairs
- ☀ A range of adaptations at no extra cost
- ☀ RAC breakdown assistance
- ☀ Tyre repair and replacement
- ☀ 60,000 mileage allowance for three years
- ☀ Up to three drivers
- ☀ EV charging support



**There are just three simple steps to joining the Motability Scheme. Turn over to find out more.**

# Step one. Choose your new car

We have a range of brand-new cars for you to pick from.  
And our online tool can help you find the right one.  
Visit [motability.co.uk/carsearch](https://www.motability.co.uk/carsearch) to start your search now.



We've got lots of cars at different prices. You might need to make an upfront payment for some higher specification cars, which we call an Advance Payment. You can learn more about how you pay and what it costs at [motability.co.uk/payments](https://www.motability.co.uk/payments)

## Electric vehicles (EVs)

More than 100,000 customers already have an EV on the Scheme.

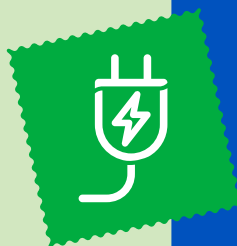
We have a great choice of EVs available. When you get an EV with us, as part of your all-inclusive lease package, we'll make sure you've got a way to charge it. You'll either get:

- ✱ A home chargepoint and a standard installation
- ✱ Or a three-year subscription to the bp pulse network of public chargepoints for access to fast, rapid and ultra-rapid chargers across the UK

Plus you'll get exclusive access to Go with the Motability Scheme. Called Go for short, our new app gives you access to over 65,000 public chargepoints from over 70 different operators across the UK.

You can find and pay for public chargepoints either using the app or by ordering a Go Charge card.

Find out more at [motability.co.uk/electric](https://www.motability.co.uk/electric)



## About the Motability Foundation

The Motability Foundation is a charity which oversees the Motability Scheme. It also provides means-tested grants to Motability Scheme customers to help fund the vehicle they need.

Visit [motabilityfoundation.org.uk](https://www.motabilityfoundation.org.uk) for more information.



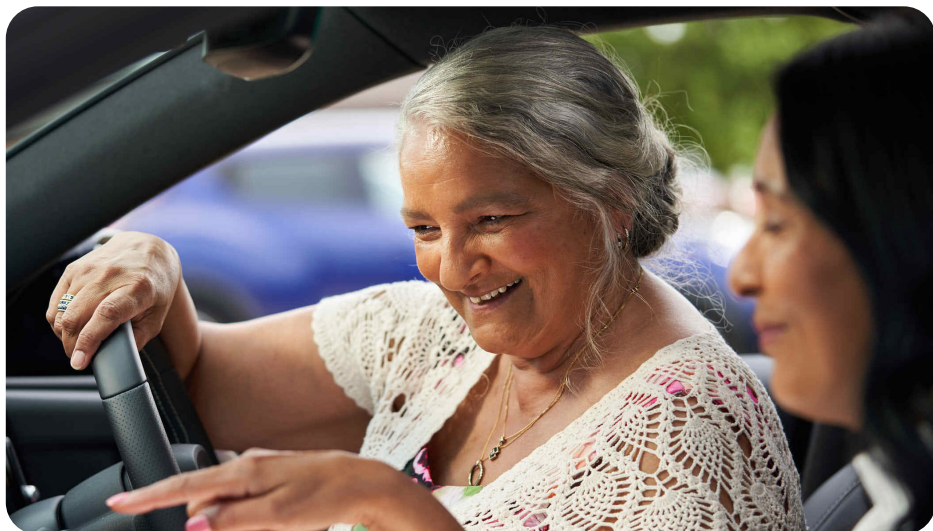
# Step two. Take a test drive

A test drive will help you feel confident your new car is right for you. It's worth visiting a few dealers to test drive different cars so you get a better idea of which one will suit you best. If you will not be driving yourself, a family member, friend or carer can take the test drive for you. Make sure you let your dealer know someone else will be coming with you.

You can find your nearest dealer at [motability.co.uk/findadealer](https://www.motability.co.uk/findadealer) and see our test drive advice at [motability.co.uk/test](https://www.motability.co.uk/test)

Top tip: start applying in your Motability Scheme online account before you visit your dealer. This will give them more time to help you find the right car for your needs.

Get started at [motability.co.uk/account](https://www.motability.co.uk/account)



# Step three. Enjoy your brand new car!

Once your car is ready, you'll need to agree on a date to collect it. Then, just fuel or charge and off you go, knowing we've got you covered.

## By your side

We'll support you throughout your lease. Whether your circumstances change or you need advice, we're here to help.

Plus, your online account is available all day, every day, to help you flexibly manage your lease and easily make changes.

## At the end of your lease

Simply return your car and pick up your new one. So you know, you cannot buy the car at the end of your lease.



Sign up to our monthly newsletter and get all the latest Motability Scheme news delivered straight to your inbox.

Just go to  
[motability.co.uk/signup](https://motability.co.uk/signup)



## Other options on the Scheme

There are more than just cars available on the Scheme. We have a wide variety of other options for you to choose from.

### Adaptations



We have a range of adaptations to help you drive, get in and out, or store your equipment. You can add many adaptations at the start of your lease at no extra cost.

We work with a network of installers who can guide you on the different types of adaptations that might help you. You can find one close to you at [motability.co.uk/adaptations](https://motability.co.uk/adaptations)

### Wheelchair Accessible Vehicles (WAVs)




WAVs are designed to be more accessible for wheelchair users. If you're not able to transfer from your wheelchair to a standard car seat, a WAV could be a good option. You can learn more about WAVs at [motability.co.uk/wavs](https://motability.co.uk/wavs)

### Scooters and powered wheelchairs



A scooter is a good option if you can travel more independently and can use a steering column with both hands. Powered wheelchairs could be for you if you need added support while travelling and make regular journeys. You can see more about our scooters and wheelchairs at [motability.co.uk/scooters](https://motability.co.uk/scooters)





# Ready to get started?

## Next steps

Find your car at  
[motability.co.uk/carsearch](https://www.motability.co.uk/carsearch)

Choose a local dealer at  
[motability.co.uk/findadealer](https://www.motability.co.uk/findadealer)



Connect with the Motability Scheme

Published by Motability Operations Limited. Registered Office: 6th Floor, 22 Bishopsgate, London, EC2N 4BQ. Registered in England and Wales Company No. 1373876. Motability Operations Limited is authorised and regulated by the Financial Conduct Authority. Calls may be recorded and monitored to improve customer service.

CAR INTRO 10/25