



**Ibstock**  
At the heart of building

# THE IBSTOCK ROOFING RANGE

CLICK TO FIND OUT MORE [>](#)

**WE ARE**  
Roofing and more.



# WE ARE

at the heart of building.

We offer a diverse range of building products, solutions and expert technical and design services that enable our customers to create inspirational spaces and places.

Everything we do revolves around our valued customers and we continuously strive to exceed their expectations. We pride ourselves on leading for new, innovative and sustainable products and solutions, both for today and for a new era of building.

**WE ARE at the heart of building. WE ARE Ibstock.**



Bricks and Masonry

Facade Systems

Roofing

Flooring and Lintels

Staircases  
and Lift Shafts

Fencing and  
Landscaping

Retaining Walls

Rail and  
Infrastructure



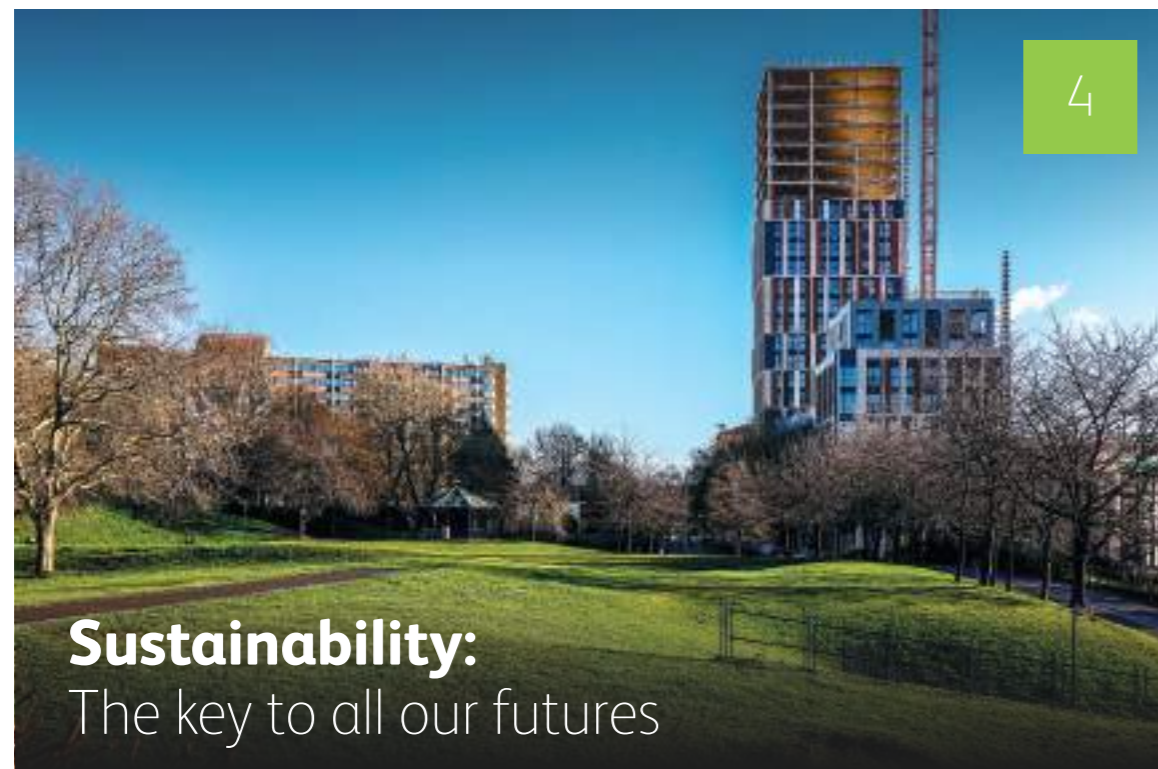
## Design and Technical Services

We are committed to providing the best possible design and technical support to our customers. From expert advice to a sector-leading training and CPD provision, Ibstock's range of design and technical services are especially configured to give architects and specifiers the access to the support they need at every stage on their project journey – from concept to build.





# CONTENTS



4

**Sustainability:**  
The key to all our futures



6

**Our roofing range:**  
Concrete tiles



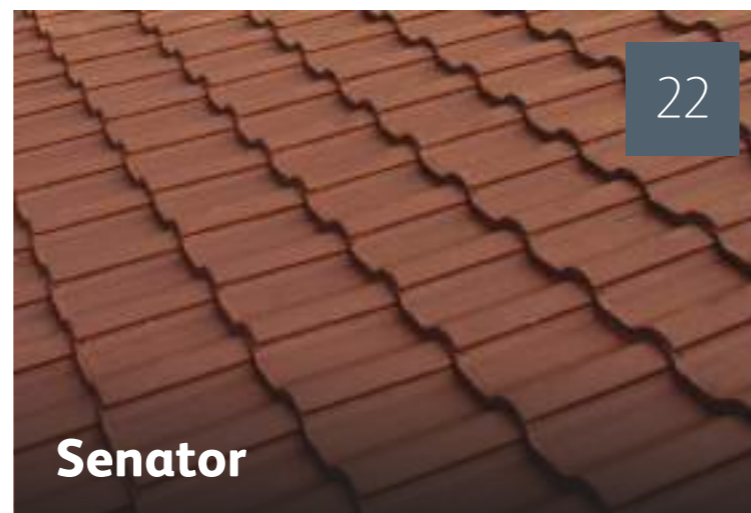
8

**SL8®**



16

**Hardrow**



22

**Senator**



11

**PAN8®**



20

**V2**



23

**Minislate**



12

**Gemini®**



21

**Centurion**



24

**Plain Tiles**





# SUSTAINABILITY: THE KEY TO ALL OUR FUTURES

We are extremely conscious about our environmental impact and are taking steps to build a sustainable future.

Our guiding purpose is to build a better world by **being at the heart of building**. To help achieve this, we have developed an environmental, social and governance strategy that highlights how we are working towards our goals and ambitions.

Central to this ESG strategy are three guiding promises:

- ✓ **WE WILL ADDRESS CLIMATE CHANGE**  
Decarbonise our products, processes and supply chain by focusing on carbon reduction, water efficiency and biodiversity gains.
- ✓ **WE WILL IMPROVE LIVES**  
Build our social value by investing in our people, our culture and our communities.
- ✓ **WE WILL MANUFACTURE MATERIALS FOR LIFE**  
Evolve our products, processes and services by incorporating whole life cycle design.



## NET ZERO BY 2040



Scan the  
QR code to  
download the  
ESG Strategy  
2030 eBook

**WE  
WILL**





# SUSTAINABILITY: THE KEY TO ALL OUR FUTURES

In the last decade we've invested £150 million in sustainable performance, implementing decarbonisation measures, production efficiencies and transformational technologies that reduce the carbon intensity and environmental impact of our operations and products, whilst accelerating our journey to Net Zero.

We are committed to supporting the Government's ambition to deliver new homes and infrastructure that are **fit for the future**, and continually work to enhance our product portfolio.

As a category, Istock Roofing is committed to innovating our products and processes to ensure they are as **sustainable** as possible. This includes the enhancement of our SL8 roof tile, a **game-changing improvement** that has significantly less embodied carbon compared to the previous generation.

40%

Achieving a 40% reduction in absolute carbon by 2030.

20%

20% of sales revenue to come from new products and solutions that deliver customer value and improved sustainability.





OUR ROOFING RANGE:

# CONCRETE TILES

Lower embodied carbon products enable housebuilders to meet carbon reduction targets through their choice of materials used on a building.

Concrete roof tiles are a durable and **lightweight alternative** to natural clay and slate roof tiles, combining affordability and authentic appearance. For example, Hardrow Slate roof tiles mimic the appearance of **natural slate** used on historic builds.

We offer an excellent choice of roof tile across our product ranges – flat or profiled, smooth or textured enabling housebuilders to **create homes with a distinctive look**.

We are proud of our achievement in developing roof tiles with up to **30% less eCO<sup>2</sup> compared to 2018 tile mixes**.\* Whilst happy with progress to date, we strive to find **new solutions, technologies and initiatives** that enable us to offer customers more low embodied carbon products.

See page 25 for more information on our performance data.

\*Figure calculated using industry average eCO<sub>2</sub>

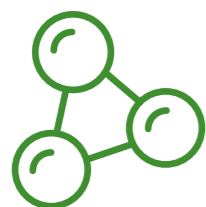
Product	eCO <sub>2</sub> /tile Original mix	eCO <sub>2</sub> /tile New mix	Tile weight	eCO <sub>2</sub> /m <sup>2</sup> Original mix	eCO <sub>2</sub> /m <sup>2</sup> New mix	Tile weight m <sup>2</sup>
SL8	0.93Kg	0.62Kg	5.4Kg	7.48Kg	4.99Kg	43.3Kg
Pan8	0.86Kg	0.58Kg	5Kg	6.73Kg	4.49Kg	57.79Kg
Gemini	0.52Kg	0.35Kg	3Kg	8.41Kg	5.62Kg	48.7Kg
V2	0.52Kg	0.35Kg	3Kg	8.36Kg	5.58Kg	48.4Kg
Centurion	0.52Kg	0.35Kg	3Kg	9.78Kg	6.53Kg	56.6Kg
Minislate	0.52Kg	0.35Kg	3Kg	8.41Kg	5.62Kg	48.7Kg
Plain Tiles	0.22Kg	0.14Kg	1.3Kg	12.95Kg	8.65Kg	78Kg





# WHY SPECIFY OUR ROOF TILES: DRIVE FOR SUSTAINABILITY

OUR COMMITMENT TO SUSTAINABILITY HAS SEEN US:



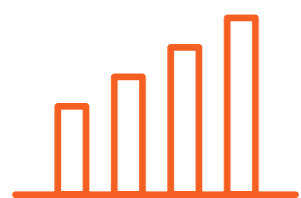
## ✓ Carbon reduction

Remove **30%\*** of embodied carbon from our roof tiles\*



## ✓ Improved mixture

This has been achieved through extensive research and development at our **Concrete Research Laboratory**.



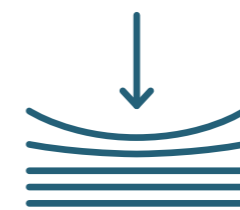
## ✓ Supported data

This reduction in embodied carbon is EPD **supported** (pending).



## ✓ Lower embodied carbon

Per m<sup>2</sup> our SL8 roof tiles embodied carbon is **5kg** compared to our previous solution which was 7.48kg.



## ✓ Increased resilience

**Enhanced transverse and lock strength** across our roofing tile range



## ✓ Less carbon

SL8 contains **30% less carbon** per m<sup>2</sup> when compared to a thick leading edge.

THIS MEANS:

\*Figure calculated using industry average eCO<sub>2</sub>. Excludes Hardrow roof tile which is manufactured at a different manufacturing site.





SL8  
ROOF TILES

# THE NEXT GENERATION SL8 ROOF TILE

Introducing the improved SL8 roof tile. Our large format roof tile that's up to 30% more sustainable\* with a thin leading edge for impressive aesthetics.

A key element of the Istock ethos is looking at how we can improve our **sustainability credentials** without impacting the high-performance delivery of our portfolio of products.

Customer feedback is really important to us and we've listened to you! We appreciate how hard you strive to not only meet, but **surpass sustainability standards**.

Every product we manufacture is **stringently trialled and tested** within our purpose-built labs and is only introduced to the market after successfully completing our comprehensive evaluation process.

\*Compared to the original SL8 tile figure calculated using industry average eCO<sub>2</sub>

“

*SL8 is a great product to work with. Its larger size tile means you don't have to transport as many to site and, with fewer tiles needed to cover the surface area of a roof, it helps save time and money.*

**Russel Whitney – Roof Plus**

”

SL8  
ROOF TILES

REDEFINES WHAT IS POSSIBLE WITH A CONCRETE ROOF TILE AND ITS FEATURES INCLUDE:

**Low embodied carbon**



**Easy-to-lay**



**High surface coverage**



**Exceeds British tile standards**



WHY SL8?

OUR INNOVATIVE APPROACH TO NEW PRODUCT DEVELOPMENT HAS LED TO THE CREATION OF A ROOF TILE THAT PARTS WITH TRADITION.

KEY FEATURES

SL8 HAS THE VISUAL CHARACTERISTICS OF A NATURAL SLATE ROOF TILE WITH THE BENEFITS THAT NO OTHER INTERLOCKING TILE CAN MATCH.



**Lower carbon**

A new tile mix (patent pending) is used in conjunction with low carbon cements to reduce the carbon emissions of the tile.



**Superior coverage**

The newly improved SL8 roof offers superior coverage at just 8 tiles per m<sup>2</sup> compared with many alternative products.



**Reduced waste**

Removal of pallet topper to reduce on-site waste.



A thin leading edge for impressive aesthetics.



Wider format for a more traditional slate appearance.



Technical support, including full fixing specifications.



Available in 3 colours:

SLATE GREY

BROWN

RED





# WHY SPECIFY SL8 ROOF TILES: THE LOW EMBODIED CARBON SOLUTION

SL8 has been extensively tested with key roofing contractors over many months to ensure its enhanced performance 'on-site' in both wet and dry conditions.

The introduction of this **ground-breaking** product into the marketplace delivers on performance and will appeal to the new homeowner. **It delivers:**



1

Reduced materials eCO<sub>2</sub> of 30%\* – reducing a building's overall CO<sub>2</sub> emissions thereby supporting ESG targets, and helping housebuilders and developers work towards government targets for carbon reduction.

2

A 20% reduction in the number of tiles used resulting in fewer tiles needed to be handled and laid.

3

SL8 roof tiles exceed British tile accreditation standards.

4

A full range of maintenance free, mechanically fixed accessories are available.

5

Enhanced transverse and lock strength means that the estimated tile breaking load has increased over the previous tile. See page 25 for more information.

\*Figure calculated using industry average eCO<sub>2</sub>. This figure was calculated and verified by our Concrete Materials Team





# SL8®

The visual characteristics of natural slate with benefits that no other interlocking tile can match.

- ✓ **IBSTOCK DESIGNED AND MANUFACTURED FIXINGS AND FITTINGS**
- ✓ **FULL FIXING SPECIFICATIONS AVAILABLE FROM [IBSTOCK.CO.UK](https://www.ibstock.co.uk)**
- ✓ **A FULL RANGE OF MAINTENANCE FREE, MECHANICALLY FIXED ACCESSORIES AND CONCRETE FITTINGS ARE AVAILABLE**
- ✓ **A THIN LEADING EDGE FOR IMPRESSIVE AESTHETICS**
- ✓ **A WIDER FORMAT FOR A MORE TRADITIONAL SLATE APPEARANCE**
- ✓ **SUPERIOR COVERAGE AT JUST 8 TILES PER SQUARE METRE**
- ✓ **20% REDUCTION IN THE NUMBER OF TILES USED RESULTING IN FEWER TILES TO HANDLE AND LAY**
- ✓ **EASY TO LAY, WITH TWO NAIL HOLES FOR BETTER FIXING FLEXIBILITY**
- ✓ **PACKAGING HAS BEEN SPECIFICALLY DESIGNED TO REDUCE DAMAGE AND WASTE ON-SITE**
- ✓ **LATEST MANUFACTURING TECHNOLOGY ENSURES CONSISTENT QUALITY**



Red



Brown



Slate Grey



This tile contains a 30% reduction in materials eCO<sub>2</sub> compared to original mix



Scan here for more information on SL8® products





# PAN8®

The visual characteristics of a traditional single pantile with the benefits that no other manufacturer can match.

This innovative large format, thin leading edge roof pantile offers superior coverage, requiring **just 8 tiles per square metre**, which gives the appearance of two pantiles once laid.

Not only this, but with a reduced materials eCO<sup>2</sup> of 30%, it reduces a building's **overall CO<sup>2</sup> emissions**. With the visual characteristics of a traditional pantile, PAN8 offers benefits that no other interlocking tile can match. These include:

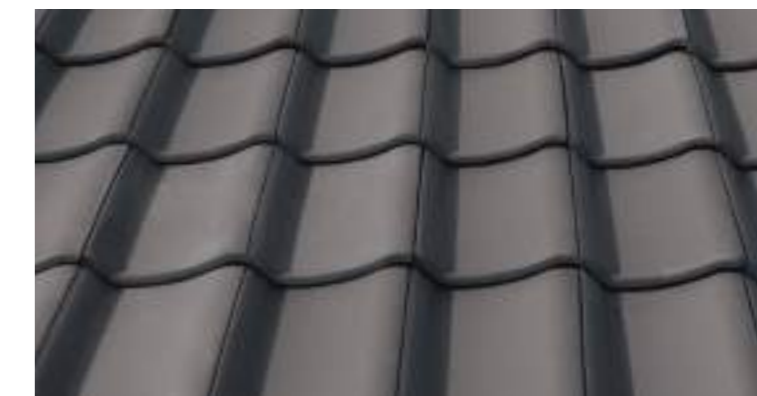
- ✓ **IBSTOCK DESIGNED AND MANUFACTURED FIXINGS AND FITTINGS**
- ✓ **FULL FIXING SPECIFICATIONS AVAILABLE FROM IBSTOCK.CO.UK**
- ✓ **A FULL RANGE OF MAINTENANCE FREE, MECHANICALLY FIXED ACCESSORIES AND CONCRETE FITTINGS ARE AVAILABLE. EASY TO LAY WITH TWO NAIL HOLES FOR BETTER FIXING FLEXIBILITY**
- ✓ **HIGH STRENGTH CAPABILITIES**
- ✓ **LATEST MANUFACTURING TECHNOLOGY ENSURES CONSISTENT QUALITY**
- ✓ **60 YEAR PRODUCT INTEGRITY GUARANTEE**



Red



Brown



Slate Grey



This tile contains a 30% reduction in materials eCO<sub>2</sub> compared to original mix



Scan here for more information on PAN8® products





# GEMINI® THIS IS ONLY HALF THE STORY...

With the advancement of key building technologies setting the pace of the industry through a desire for efficiency, sustainability and lower costs, you won't find many products on a new building today that you would have found 25 years ago. Gemini® is the exception.

Since its conception as the first ever Flat Thin leading edge Twin Plain tile in 1995, Gemini® has undergone two redesigns that have ensured its **usefulness** and **popularity** among housebuilders, architects and contractors. Known as the original twin tile, Gemini® is a true **innovation** in roof tile design, with its double camber technology giving the appearance of **two traditional plain** tiles when laid.



## INNOVATIVE ROOFING SOLUTIONS

An invention that has changed the foundations of roof tiling and has since received a Queen's Award for Enterprise – Innovation being the only twin tile to currently hold the accolade.





# REDUCING ENVIRONMENTAL IMPACT IS ONLY HALF THE STORY

Environmental and sustainability considerations are increasing in prominence as new developments in both housing and commercial properties continue to 'go greener' in order to meet regulations and offer an environmentally friendly building.

This is where Gemini® excels, as while larger in size, it is also **lighter in weight** than both single plain tiles and its double tile competitors enabling it to offer environmental benefits that the others can not. Gemini® requires less tiles to complete a waterproof envelope and the **reduction in demand for raw materials** this provides, leads to less quarried aggregate used in comparison to both plain concrete and clay roof tiles.





# REDUCING ENVIRONMENTAL IMPACT IS ONLY HALF THE STORY

Other key environmental considerations of Gemini® include: fewer tiles needing to be transported to site, less raw materials extracted, less packaging, fewer pallets used, lighter haulage loads and an overall reduction in the number of trucks needed on the road to distribute the product.\*

\*Compared to traditional plain tiles.





# GEMINI®

The only double cambered interlocking plain concrete tile.

Gemini® is a truly **innovative roof tile range** that has been awarded the prestigious Millennium Products status by the Design Council, as well as a Queen's Award for Enterprise: Innovation.

- ✓ **FULL FIXING SPECIFICATIONS AVAILABLE FROM IBSTOCK.CO.UK**
- ✓ **A FULL RANGE OF MAINTENANCE FREE, MECHANICALLY FIXED ACCESSORIES AND CONCRETE FITTINGS ARE AVAILABLE**
- ✓ **APPEARANCE OF A TRADITIONAL PLAIN TILE WHEN LAID**
- ✓ **ONLY 16.3 TILES PER M<sup>2</sup>**
- ✓ **20% LABOUR SAVINGS COMPARED TO PLAIN TILES**
- ✓ **3/4 WIDTH TILES AVAILABLE TO ACHIEVE BROKEN BOND PATTERN**
- ✓ **LAYS TO LOWER PITCHES – 22.5° (PLAIN TILES 35°)**
- ✓ **THIN LEADING EDGE**
- ✓ **IBSTOCK DESIGNED RANGE OF DRY FIX FITTINGS COMPLEMENT GEMINI ROOF TILES AND EXCEED BRITISH STANDARD REQUIREMENTS**
- ✓ **CONFORMS TO BS EN 490**
- ✓ **60 YEAR PRODUCT INTEGRITY GUARANTEE**



Sunrise Blend



Mixed Russet



Red



Grey



Brown



This tile contains a 30% reduction in materials eCO<sub>2</sub> compared to original mix



Scan here for more information on Gemini products





# HARDROW

A roofing heritage that is set in stone.

Our popular Hardrow range enable a **natural stone appearance** to be achieved, adding to the aesthetic appeal to the architecture of a building. With three colour ranges available, both classic and modern tastes are catered for.

Produced in a range of sizes for that bold appearance and excellent coverage, Hardrow Slates can deliver a surprisingly varied range of alternative colour mixes. Such is their **quality and appeal**, they are approved by local authorities for use on period property projects.

- ✓ **IBSTOCK DESIGNED AND MANUFACTURED FIXINGS AND FITTINGS**
- ✓ **A 'DOUBLE-LAP' FOR FLEXIBLE ROOF DESIGN**
- ✓ **IBSTOCK DESIGNED HANDMADE FITTINGS ENABLE ROOF DETAILING**
- ✓ **KITEMARKED TO BS EN 490**
- ✓ **SOME OF THE SIZES CAN BE LAID AS LOW AS 17.5'**
- ✓ **30 YEAR PRODUCT INTEGRITY GUARANTEE**



## HARDROW SOLOS

A single colour slate that is manufactured to be non-uniform in appearance to replicate the traditional natural stone roof aesthetic.



## HARDROW HARMONIES

Subtle individual blends of 'mixed Solo colour' designs, unique to Hardrow for a unique, vibrant aesthetic.



## HARDROW DUETS

Exceptional and innovative. Duets combine blended colours from the Solo range on each slate giving unique and optimum results.





Scan here  
for more  
information  
on Hardow  
Solos

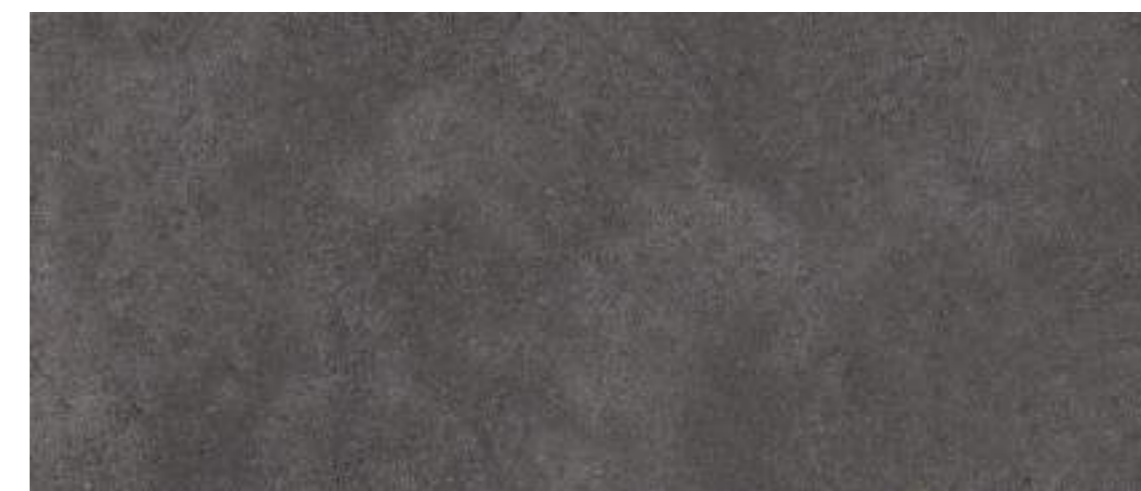
# HARDROW SOLOS



Brown



Yellow



Light Grey



Old Stone



Dark Grey



Thatch





Scan here  
for more  
information  
on Hardow  
Harmonies

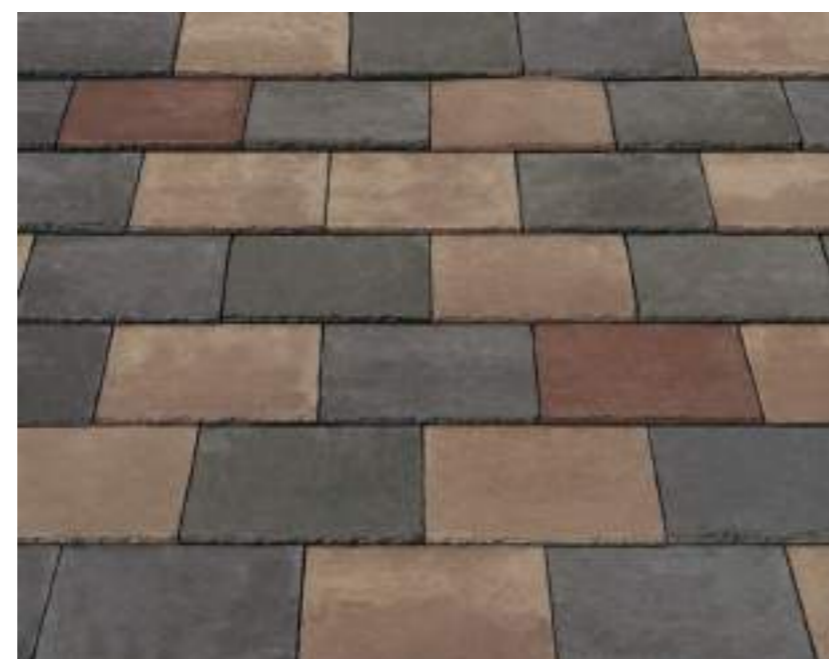
# HARDROW HARMONIES

COLOUR BLEND OPTIONS (MIXED ON SITE)



Symphony

BROWN	YELLOW	LIGHT GREY
60%	20%	20%



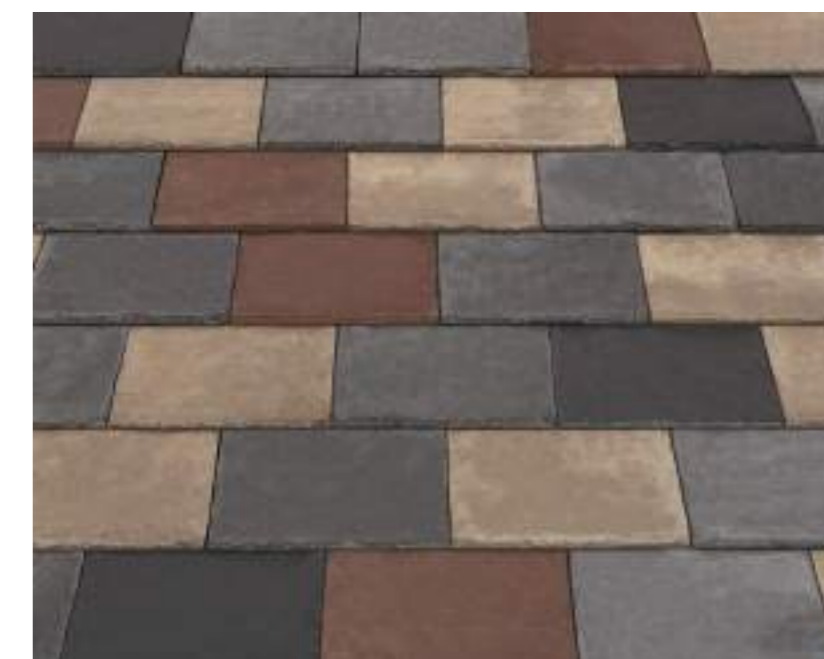
Collyweston

LIGHT GREY	YELLOW	BROWN
55%	40%	5%



Overture

LIGHT GREY	DARK GREY	THATCH
60%	20%	20%



Cotswold

BROWN	LIGHT GREY	YELLOW	THATCH
20%	40%	30%	10%





Scan here  
for more  
information  
on Hardrow  
Duets

# HARDROW DUETS



Barley



Twilight



Dusk





# V2

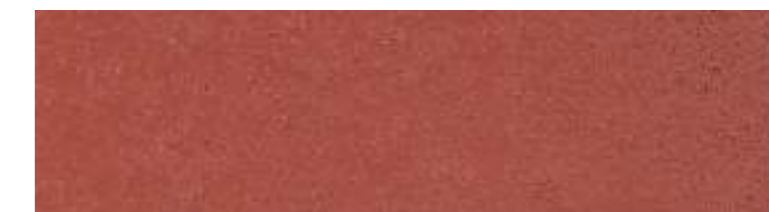
Re-engineered for ultimate strength.

V2 are our high performance, cost effective, 15 x 9 tiles proven in tests to be one of the **strongest tiles of its type** for the re-roofing market. Features and benefits include:

- ✓ **IBSTOCK DESIGNED AND MANUFACTURED FIXINGS AND FITTINGS**
- ✓ **FULL FIXING SPECIFICATIONS AVAILABLE FROM IBSTOCK.CO.UK**
- ✓ **EASY TO LAY**
- ✓ **STRAP BANDED IN PACKS OF 6 TILES FOR EASE OF HANDLING AND MINIMAL WASTAGE**
- ✓ **INTERLOCK FEATURE, PROVEN TO GIVE BETTER DRIVEN RAIN, AND 'ICE BLOCKING' PERFORMANCE**
- ✓ **BATTEN SUPPORTS TO ALLOW FREE AIR FLOW ENSURING BATTENS STAY DRY**
- ✓ **AVAILABLE IN 4 SMOOTH COLOURS**
- ✓ **HIGH QUALITY PRODUCT**
- ✓ **60 YEAR PRODUCT INTEGRITY GUARANTEE**
- ✓ **CONFORMS TO BS EN 490**



Autumn



Red



Brown



Grey



This tile contains a 30% reduction in materials eCO<sub>2</sub> compared to original mix



Scan here for more information on V2 products



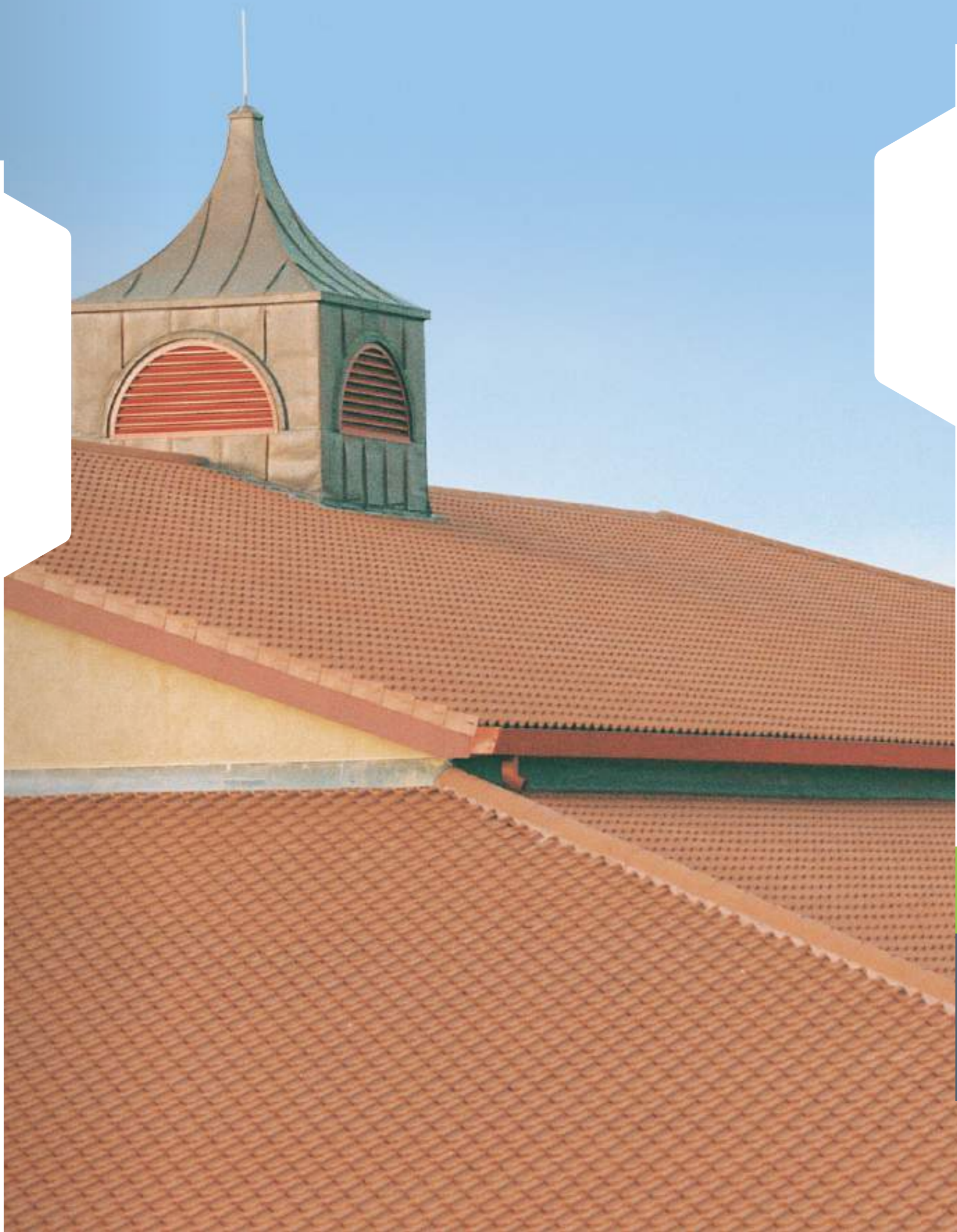


# CENTURION

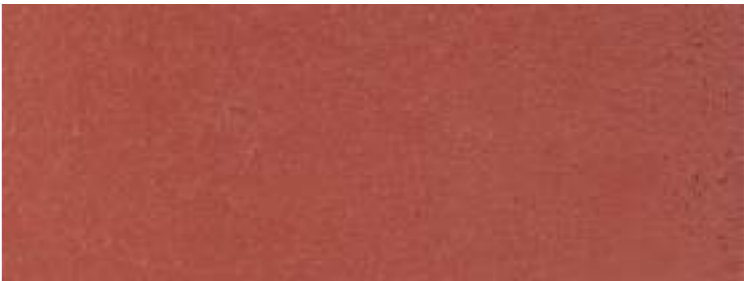
Innovative tiling design has been harnessed to create a low-pitch interlocking roof tile.

It is capable of being laid to a rafter pitch of **12.5°** but can be laid down to **10°** on some simple roofs provided that all of the specifications are followed. Features and benefits include:

- ✓ **IBSTOCK DESIGNED AND MANUFACTURED FIXINGS AND FITTINGS**
- ✓ **FULL FIXING SPECIFICATIONS AVAILABLE FROM IBSTOCK.CO.UK**
- ✓ **CAN BE LAID AS LOW AS 10°**
- ✓ **WIND BARRIERS BEHIND LEADING EDGE TO COMBAT WIND LIFT**
- ✓ **HIDDEN FIXINGS INCLUDING TILE CLIP**
- ✓ **AVAILABLE IN 4 COLOURS**
- ✓ **CONFORMS TO BS EN 490**
- ✓ **60 YEAR PRODUCT INTEGRITY GUARANTEE**



Autumn



Red



Brown



Grey



This tile contains a 30% reduction in materials eCO<sub>2</sub> compared to original mix



Scan here for more information on Centurion products





# SENATOR

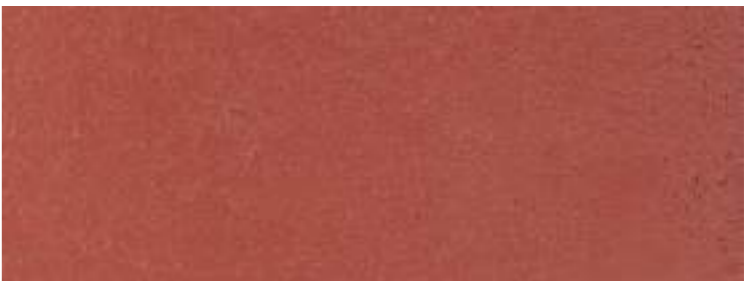
Traditional single pantile.

Senator are **smooth finish single pantiles** available in a range of four colours. Features and benefits include:

- ✓ **IBSTOCK DESIGNED AND MANUFACTURED FIXINGS AND FITTINGS**
- ✓ **FULL FIXING SPECIFICATIONS AVAILABLE FROM [IBSTOCK.CO.UK](http://IBSTOCK.CO.UK)**
- ✓ **SMOOTH FINISH PROFILE**
- ✓ **AVAILABLE IN 4 COLOURS**
- ✓ **CONFORMS TO BS EN 490**
- ✓ **60 YEAR PRODUCT INTEGRITY GUARANTEE**



Autumn



Red



Brown



Grey



This tile contains a 30% reduction in materials eCO<sub>2</sub> compared to original mix



Scan here for more information on Senator products





# MINISLATE

The aesthetic appeal of natural slate with the benefits of an interlocking concrete tile.

- ✓ **IBSTOCK DESIGNED AND MANUFACTURED FIXINGS AND FITTINGS**
- ✓ **FULL FIXING SPECIFICATIONS AVAILABLE FROM IBSTOCK.CO.UK**
- ✓ **A FULL RANGE OF MAINTENANCE FREE, MECHANICALLY FIXED ACCESSORIES AND CONCRETE FITTINGS ARE AVAILABLE. EASY TO LAY WITH TWO NAIL HOLES FOR BETTER FIXING FLEXIBILITY**
- ✓ **20 X 12 SLATE APPEARANCE WHEN LAID**
- ✓ **EASY INSTALLATION – FIXED AS SIMPLY AS CONVENTIONAL INTERLOCKING TILES**
- ✓ **HIDDEN FIXINGS, INCLUDING TILE CLIP**
- ✓ **60 YEAR PRODUCT INTEGRITY GUARANTEE**
- ✓ **CONFORMS TO BS EN 490**



Grey



This tile contains a 30% reduction in materials eCO<sub>2</sub> compared to original mix



Scan here for more information on Minislate products





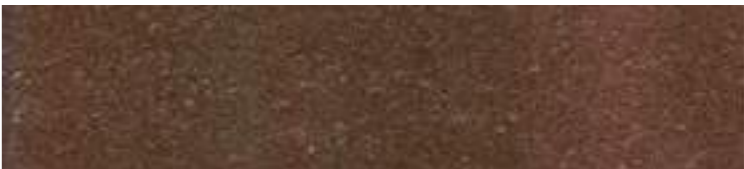
# PLAIN TILES

Traditional 10½” x 6½” Plain tile for vertical tile hanging.

- ✓ **HANGING NIBS DESIGNED AND POSITIONED FOR MAXIMUM STRENGTH**
- ✓ **SHAPE DESIGNED TO IMPROVE AIR CIRCULATION BETWEEN TILE AND BATTEN**
- ✓ **THROUGH COLOURED**
- ✓ **CONFORMS TO BS EN 490**
- ✓ **60 YEAR PRODUCT INTEGRITY GUARANTEE**



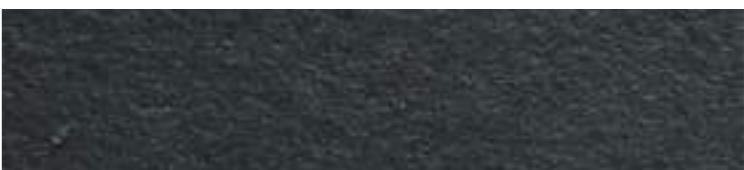
Sunrise Blend



Mixed Russet



Red



Grey



Brown



This tile contains a 30% reduction in materials eCO<sub>2</sub> compared to original mix



Scan here for more information on Plain Tile products



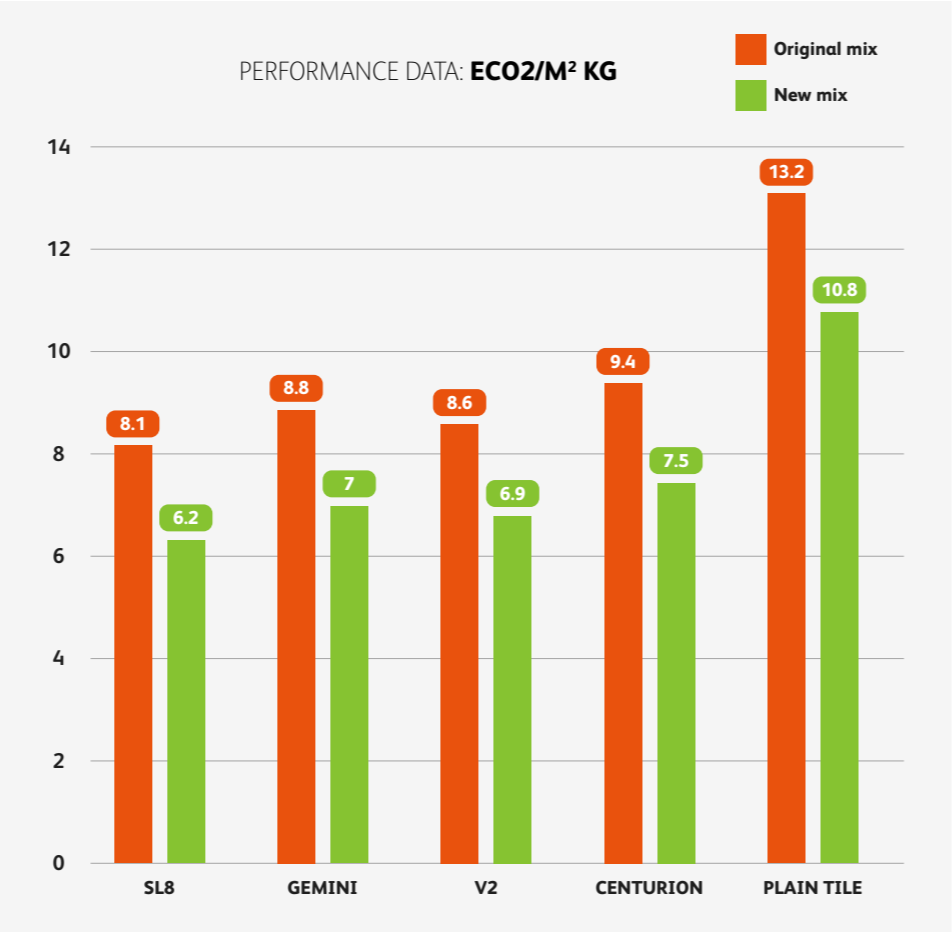


# APPENDIX

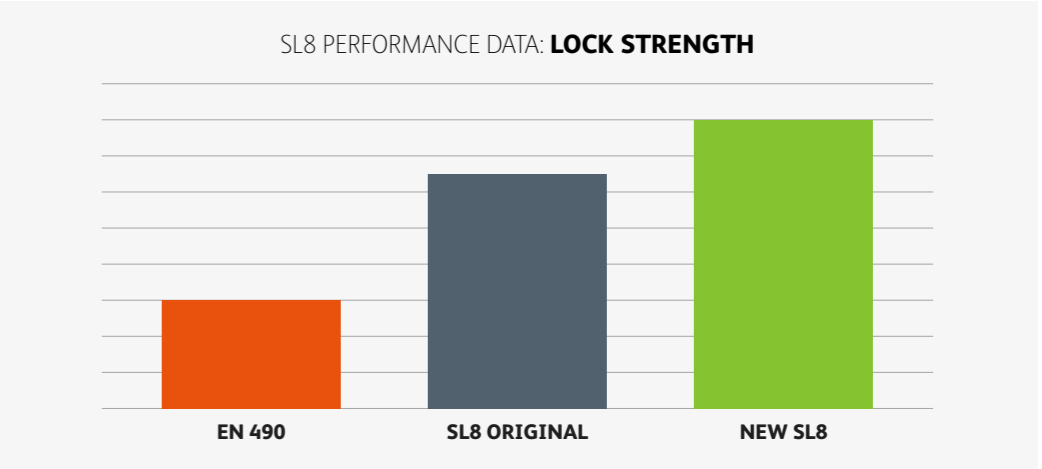
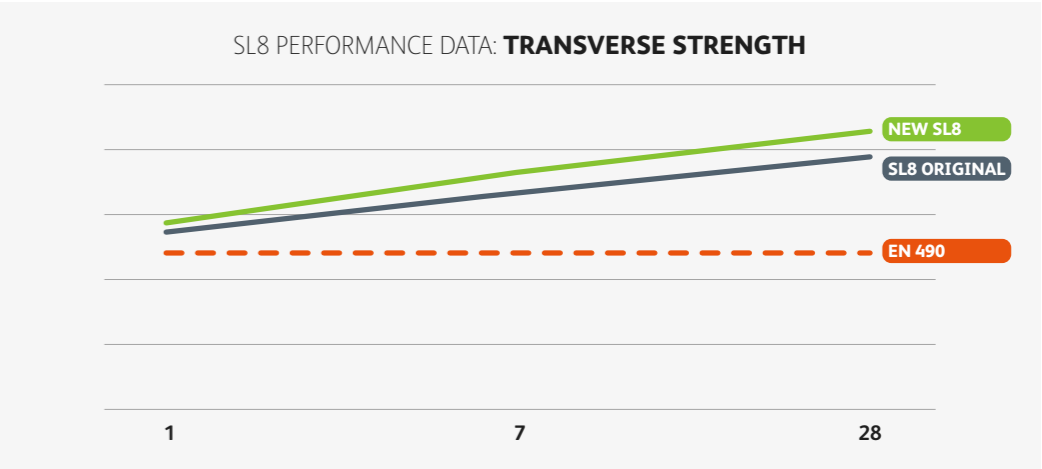
From page 06.



These figures were calculated and verified by our Concrete Materials team and are based on industry figures.



From page 09.





# TECHNICAL DETAIL



VERGE SYSTEMS

**SYSTEMS AVAILABLE:**

- SL8 Verge System (colours available: grey and rustic)
- PAN8 Verge System (colours available: grey and rustic)
- Gemini/Minislate Verge System (colours available: grey, brown, red and rustic)

**FEATURES AND BENEFITS INCLUDE:**

- Dry fix, Maintenance free, systems to replace mortar bedded verges
- Simple and effective way of securely fixings verge tiles as a second mechanical fixing
- SL8 and PAN8 verge units have been designed with drainage channels, ensuring water is discharged into the gutter
- Gemini and Minislate verge capping units designed to secure verge tiles without the need for verge clips
- Fully compliant with BS 5534 and BS 8612



VENTED DRY RIDGE SYSTEMS

**SYSTEMS AVAILABLE:**

- Flat tile vented ridge system - 6m
- PAN8 vented ridge System - 6m
- Centurion/Senator vented Ridge System - 3m
- V2 vented ridge system - 3m
- Hardrow vented ridge system - 6m
- All ridge systems are available in: grey or rustic colours

**FEATURES AND BENEFITS INCLUDE:**

- Dry fix, maintenance free systems to replace mortar bedded ridges
- Provides high level discreet ventilation along the ridge line
- Top fillers designed to suit the profiles of all Ibstock roof tiles
- Meets BS 5534 and BS 8612 requirements



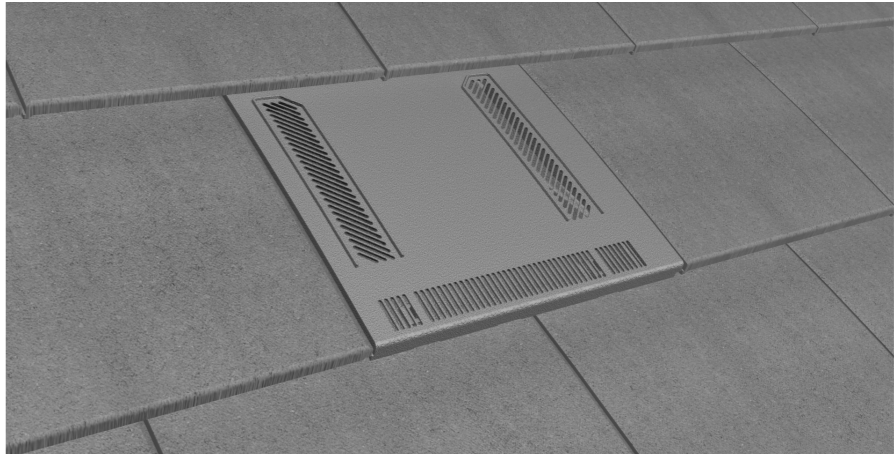
DRY HIP SYSTEMS

**SYSTEMS AVAILABLE:**

- SL8/Gemini/Minislate dry hip system - 6m
- PAN8/V2/Centurion dry hip system - 6m

**FEATURES AND BENEFITS INCLUDE:**

- Dry fix, maintenance free systems to replace mortar bedded hips
- Discreet finish to the hip line and easy to install
- Fully weather resistant
- Meets BS 5534 and BS 8612 requirements



VENT TILES

**SYSTEMS AVAILABLE:**

- Available in all roof tiles (grey, brown, red and rustic colours available)

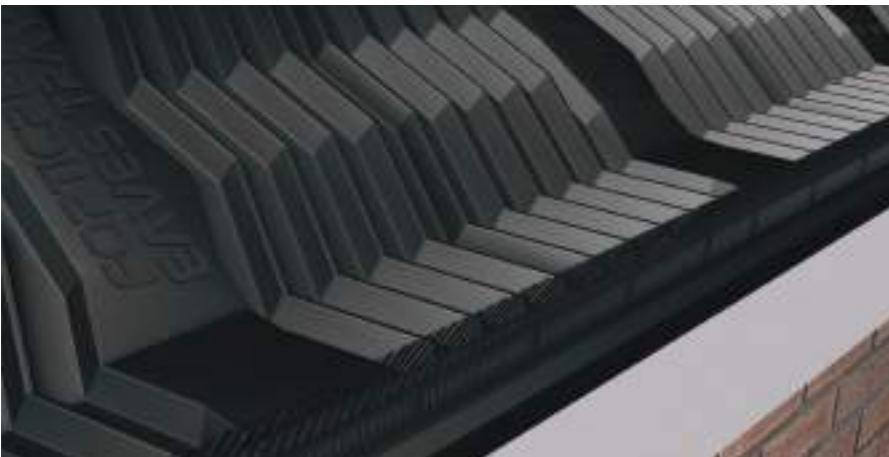
**FEATURES AND BENEFITS INCLUDE:**

- Discreet ventilation tiles designed to blend in with the roof finish
- Designed to match the profile of Ibstocks tiles
- Air vent and soil vent packs available
- Quick and easy to install
- Meets BS 5534 and BS 5250 requirements





# TECHNICAL DETAIL



UNIVERSAL EAVE SYSTEMS

**SYSTEMS AVAILABLE:**

- Universal Eave System - 6m
- Centurion low pitch eave system - 3m (suitable for use under 15 degrees with Centurion only)

**FEATURES AND BENEFITS INCLUDE:**

- Eave extension pack available for use with universal system
- Universal eave system provides 25000mm<sup>2</sup>/linear metre free vent area
- Suitable for use with flat and profile tiles
- Easy and simple to install
- Meets BS 5534 and BS 5250 requirements



TILE CLIPS

**CLIPS AVAILABLE:**

- Tile to tile clips
- Perimeter clips (available in grey and rustic colours)
- Verge Clips

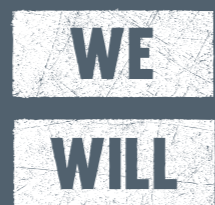
**FEATURES AND BENEFITS INCLUDE:**

- Mechanical fixings specifically designed to fit the profile of Ibstocks interlocking tiles
- Protects tiles from wind uplift
- Easy to install
- Tile to tile clips are hidden fixings
- Meets BS 5534 requirements





**HEAD OFFICE**  
Ibstock, Leicester Road, Ibstock, Leicestershire LE67 6HS  
**T:** +44 (0)1530 261 999  
**E:** [roofing@ibstock.co.uk](mailto:roofing@ibstock.co.uk)  
**[www.ibstock.co.uk](http://www.ibstock.co.uk)**



ADDRESS CLIMATE CHANGE  
IMPROVE LIVES  
MANUFACTURE MATERIALS FOR LIFE



**Ibstock**  
At the heart of building