

IN THIS ISSUE



Stanmore Place



Portlands



Bentley Priory

# design

FROM IBSTOCK BRICK



THE BEST OF BRICK

THE BEST OF BRICK

For this special 'The best of brick' issue, we have brought together some of the best and most exciting examples of recently completed brick buildings.

Whilst they are all special in their own way - many are truly inspirational! They demonstrate the variety and flexibility of modern brick cladding, and the vast range of formats, sizes, textures and colours available to today's architects and designers.

With traditional rich reds and browns, imposing slate greys, whites, and an endless array of colourful glazes and bespoke blends, they help to give each building its own personality - providing an enduring visual architectural record that will be enjoyed for generations to come.













Some are serious, some playful; some traditional, some modern; but all have the enduring qualities that only brick can bring.



Each of the buildings in this issue have been chosen as Ibstock's entries in the **2014 Brick Development Awards**. We think they are all winners – **JUDGE FOR YOURSELF!**



CONTENTS

 HOUSING 1-5 UNITS 04	 HOUSING 6-25 UNITS 06
 HOUSING 26+ UNITS 08	 VOLUME HOUSEBUILDING 10
 COMMERCIAL 14	 PUBLIC BUILDINGS 16
 INNOVATIVE USE OF BRICK 18	 CRAFTSMANSHIP 20
 REFURBISHMENT & RENOVATION 22	 OUTDOOR SPACE 24
 EDUCATION 26	 INTERNATIONAL 28

Front Cover Image: Eltham Hill School

## Portlands, Ballibrack, Dublin

This project represents an imaginative re-thinking of what was a dark and uninspiring conventional detached house in the suburbs of the city.

To create a new lighter and brighter interior, and to add new living and dining space and a working studio, the building has been opened up to the south facing side and three extensions added to re-shape and reorientate it towards the sun. In addition to creating new outdoor spaces between the new brick volumes, each extension is tailored to respond to its location and take advantage of sunlight throughout the day.

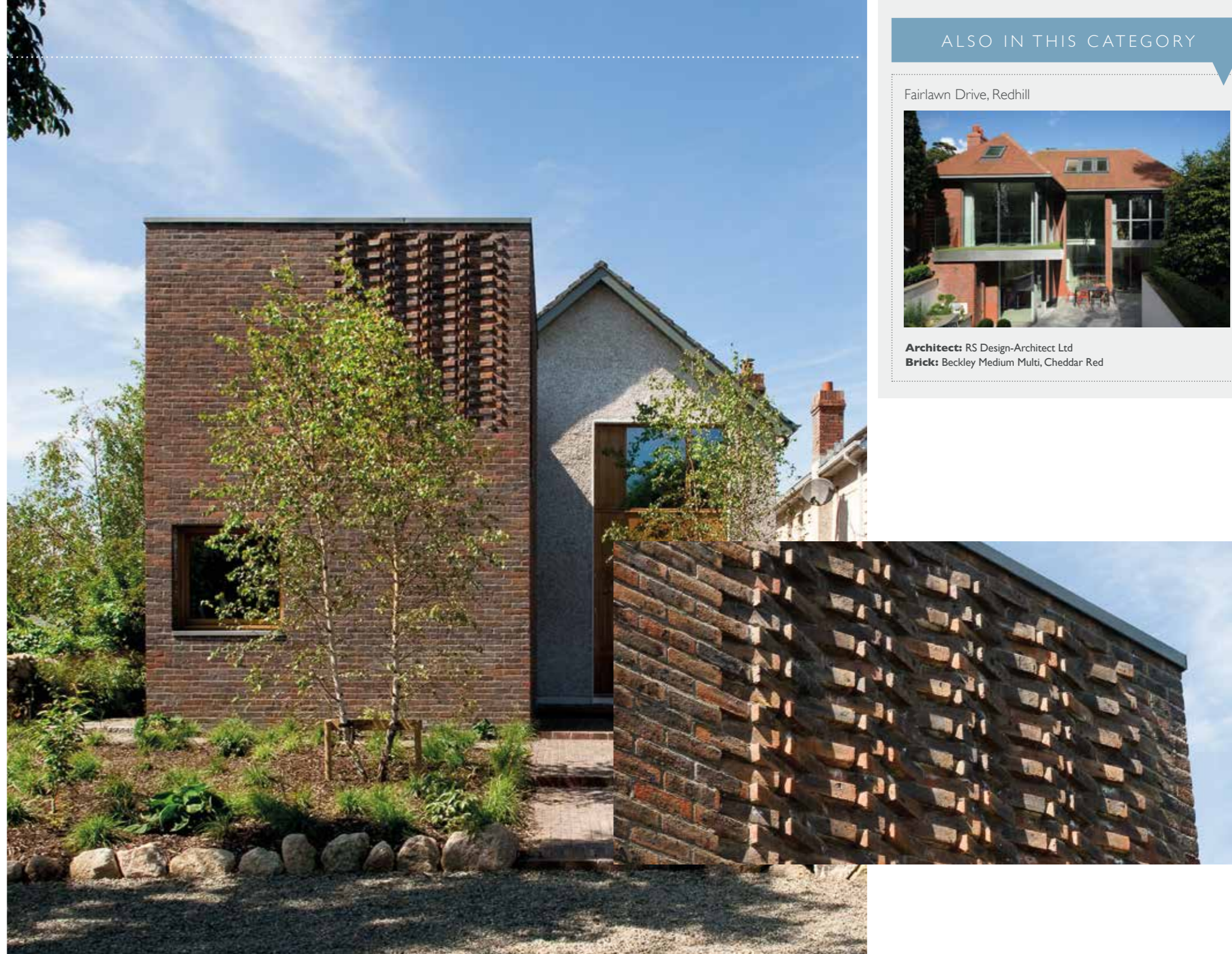
Brick was chosen for its tactile qualities, longevity and to contrast with the original pebble-dashed render finish. The brick potential was fully exploited through special detailing and innovative use as a brick screen to the guest bedroom, by overlapping bricks at corners and by its sympathetic use for steps and paving to the front of the house.



### BRICK

Barcombe  
Multi Stock

Architect  
**Robert Bourke Architects**  
Telephone  
**+353 1 872 7904**  
[www.rba.ie](http://www.rba.ie)

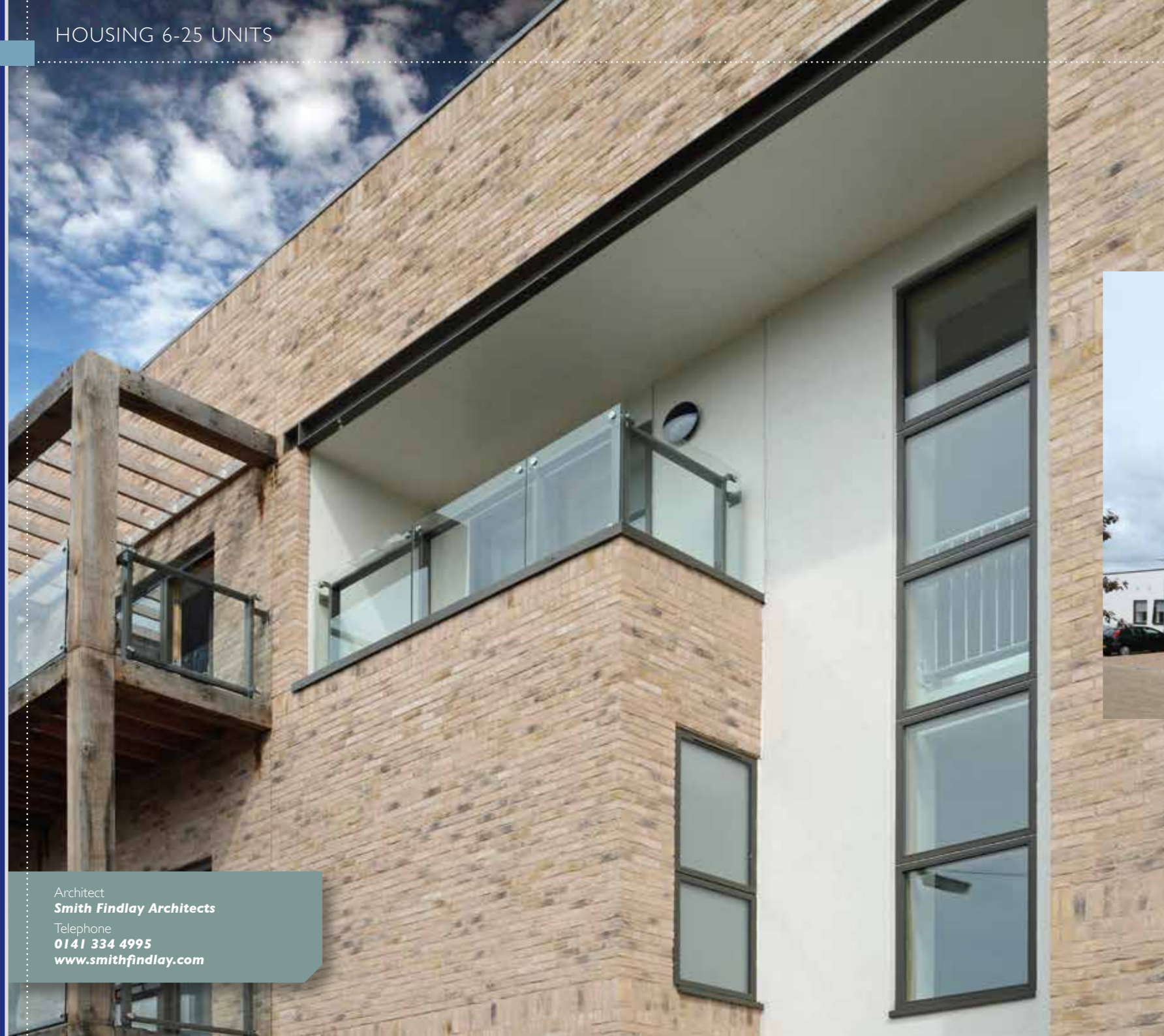


### ALSO IN THIS CATEGORY

Fairlawn Drive, Redhill



**Architect:** RS Design-Architect Ltd  
**Brick:** Beckley Medium Multi, Cheddar Red



Architect  
**Smith Findlay Architects**  
 Telephone  
**0141 334 4995**  
[www.smithfindlay.com](http://www.smithfindlay.com)

## Clydeford View, Glasgow

The sheltered housing project, close to Cambuslang's main shopping area, comprises a main 3-storey block with 24 one- and two-bedroom apartments and an ancillary block with warden's office and community facilities, designed over a single storey to allow solar penetration to a central landscaped courtyard area.



**BRICK**  
 Leicester  
 Special Blend

The basic concept is that of a three-storey L-shaped perimeter 'wall' addressing the streets facing north and east, allowing most of the flats to maximise views over the adjacent Cambuslang Golf Course.

An early design decision was taken to use brick as the prime cladding material, with the intention being to create a 'masonry' effect using variegated handmade stock-type bricks with matching coloured mortar. With support from Ibstock, the architects settled on a special blend of Ivanhoe Cream and Bradgate Light Buff, with great care taken during construction to ensure blend consistency from a minimum of three pallets.

### ALSO IN THIS CATEGORY

Magdalene's Drive & St Martins Church, Edinburgh



**Architect:** Ian Springford Architects  
**Brick:** Drumquin  
 © Dave Morris

Old Lansdowne Road, Manchester



**Architect:** Calderpeel Architects  
**Brick:** Birtley Olde English Buff

Gateway Apartments, Edinburgh



**Architect:** Susan Stephen Architects  
**Brick:** Oyster White

## One Church Square, Westminster

This new build scheme for Dolphin Square Foundation has transformed a previously derelict site into vibrant affordable housing for the workers and residents of Westminster.

**BRICK**  
Heritage Red Blend



Architect  
**GRID Architects**  
Telephone  
**020 7593 3260**  
[www.gridarchitects.co.uk](http://www.gridarchitects.co.uk)

Situated within a conservation area, the 5-storey building features a total of 31 apartments constructed around a central glass-covered courtyard, with all materials carefully chosen to link the building sympathetically with the surrounding historic urban context.

Ibstock Heritage Red Blend, set on a plinth of Salt Brown Glazed bricks, creates a dramatic visual, whilst closely matching the colours and textures of the nearby Grade I listed Church.

## Mint Street, Bethnal Green

The stunning building, for the Peabody Trust, is one of the first in London to deliver affordable rented housing under the Government's Affordable Rent Model, with two top floors of luxury flats and penthouses subsidising 5 floors of affordable rented accommodation below.



Architect  
**Pitman Tozer**  
Telephone  
**020 3214 3255**  
[www.pitmantozzer.com](http://www.pitmantozzer.com)

Curved in line with the adjacent railway viaduct and featuring cantilevered and recessed levels and large windows that help to break up the mass, the building is characterised by the 'playful' use of brickwork to all elevations.

On Mint Street, overlooking the railway, Light Mint Glazed bricks create a distinctive base, contrasting with Staffordshire Blue Brindle Smooth to the following four storeys, which cantilever out, emphasising the horizontal nature of the street elevation. The clever use of recessed brick banding accentuates the curve, while to the courtyard elevation Smooth Pearl White bricks are used to soften the façade and create a lighter backdrop.

**BRICK**

Staffordshire Blue Brindle Smooth, Light Mint Glazed, Smooth Pearl White



ALSO IN THIS CATEGORY

716 Argyle Street, Glasgow



**Architect:** Collective Architecture **Brick:** Bradgate Light Buff, Throckley Smooth Blue, Throckley Smooth Grey

Sidmouth Street, London



**Architect:** HGP Architects **Brick:** Ivanhoe Cream

ARDB Centre, Glasgow



**Architect:** Collective Architecture **Brick:** Cheddar Golden, Atlas Smooth Red, Staffordshire Blue Brindle Smooth, Linenmill (Tyrone)  
© Tom Manley

Nowhere is the flexibility, versatility and timelessness of brick better exploited than in the volume housing sector. See for yourself the sheer grandeur of Barratt's Bentley Priory development; the historical context so successfully created by David Wilson Homes at Discovery Gardens; the imposing curved façade of Berkeley Group's Stanmore Place and Redrow's stunningly elegant Villas at Lytham Quays.

Barratt Homes



BENTLEY PRIORY, MIDDLESEX

David Wilson



TRUMPINGTON MEADOWS, CAMBRIDGE



DISCOVERY GARDENS, COALVILLE



HORIZONS, ALLERTON BY WATER



RIVERSIDE MEADOW, SHREWSBURY



PILGRIM'S REST, KEMPSTON

Berkeley Group



STANMORE PLACE, LONDON



CHELSEA CREEK, LONDON © Matt Lively



WOODBERRY DOWN, LONDON

Redrow Homes



SANDY LANE, BUCKSHAW VILLAGE



AURORA SPRINGS, BRISTOL



LYTHAM QUAYS, LYTHAM ST ANNES

## The Kia Oval, New Pavilion Portico

Providing a commanding entrance at one of the country's oldest cricket grounds, owned by The Duchy of Cornwall and the home to Surrey County Cricket Club, the new grand portico at The Kia Oval features a blend of brickwork that perfectly matches the colour, texture and style of the original 1890s members' pavilion.



Using imperial sizes to gauge precisely with the existing building, Ibstock factory-blended handmade Swanage Light and Restoration Red bricks in batches give a consistent and subtle variance in colour across the façades. Bricks were laid in traditional English garden wall bond with 8mm flush-struck joints, utilising lime mortar to minimise the frequency and appearance of movement joints, which were hidden discretely at vertical intersections.

To ensure completion within the cricket close season, fast-track construction techniques were employed, with all brickwork arches precision manufactured off-site by Ibstock Kevington as pre-formed cast concrete sections with bonded brick slips.



Architect  
**Hugh Petter, Adam Architecture**  
Telephone  
**020 7841 0140**  
[www.adamarchitecture.com](http://www.adamarchitecture.com)



© Morley von Sternberg

### ALSO IN THIS CATEGORY

New Pavilion, Old Trafford Cricket Ground



**Architect:** BDP, Manchester  
**Brick:** Chester Red Blends - Radials

Longbridge Phase One Re-Development, Birmingham



**Architect:** Holder Mathias Architects  
**Brick:** Etruria Mixture, Fireborn Natural Blue

38 Clarence Street, Kingston Upon Thames



**Architect:** Marchini Curran Associates  
**Brick:** Crowborough Multi Stock



## Ebbw Fawr 3-16 School, Ebbw Vale

At the heart of the former Ebbw Vale steelworks redevelopment, the school is situated in a 'Severe' exposure zone and has been used as the basis for a 'Future climate' report.

**Architects BDP worked alongside Oxford Brookes University and the Technologies Strategies Board to design an outer envelope capable of responding to predicted future weather patterns.**

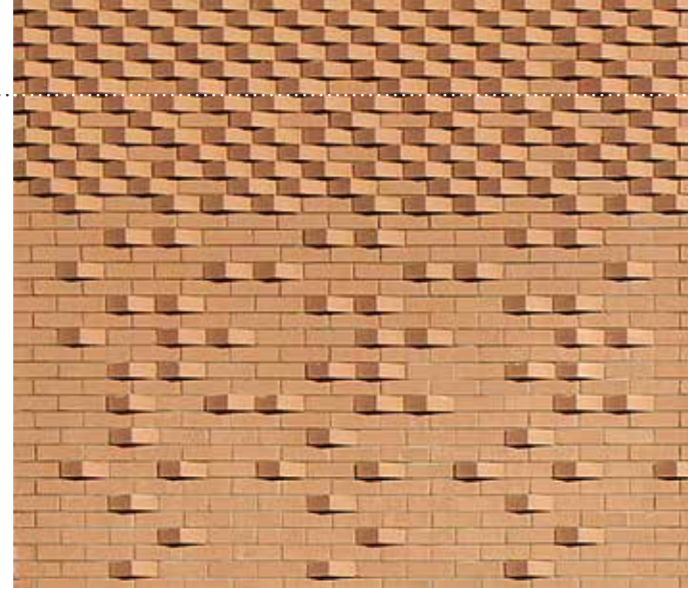
Brick makes up 75% of the overall façade. BDP paid particular attention to the through-the-wall specification working closely with Ibstock to identify durable smooth facing bricks that met the highest BS-EN 771-1 'F2' classification for freeze/thaw resistance.

Several methods of adding texture and relief were explored, with the architects settling on panels of matching Ibstock 'Umbra Sawtooth' and 'Fireborn Lined' bricks, which provided the required visual contrast whilst maintaining levels of durability and freeze/thaw resistance.

Architect  
**BDP, Bristol**  
Telephone  
**0117 929 9861**  
**www.bdp.com**

### BRICK

Staffordshire Slate Blue Smooth; Cheddar Golden; matching Umbra Sawtooth and Fireborn Lined panels.



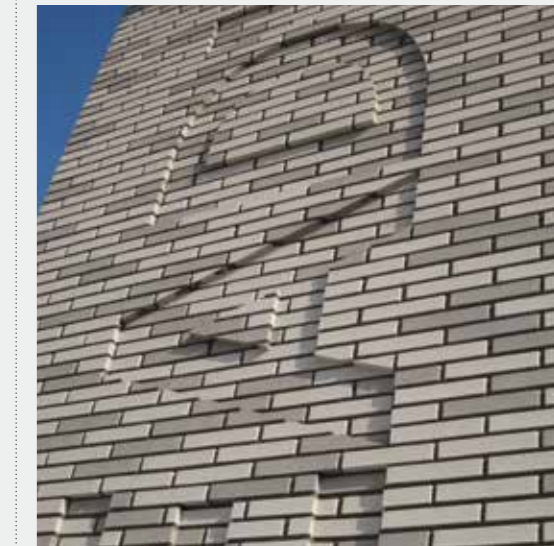
### ALSO IN THIS CATEGORY

Wester Hailes Healthy Living Centre, Edinburgh



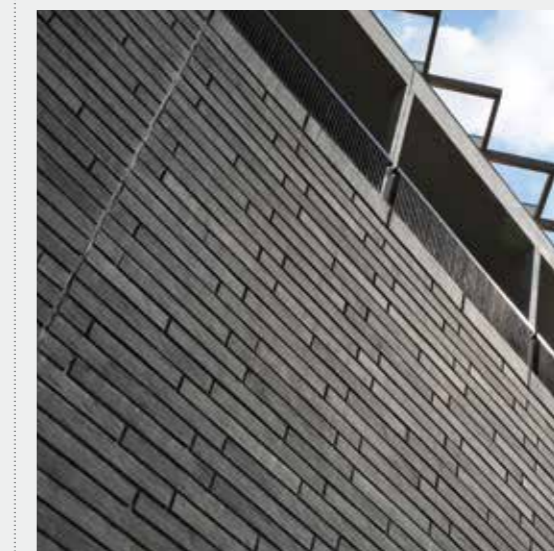
**Architect:** jmarchitects  
**Brick:** Pearl White, Oyster White, Throckley Smooth Buff

Reading Station, Berkshire



**Architect:** Grimshaw Architects  
**Brick:** Silver White and Silver Grey

Richmond Buildings Students Union, Bristol



**Architect:** Feilden Clegg Bradley  
**Brick:** Fireborn Freedom Blue Riven

Salford Royal Hospital Extension, Salford



**Architect:** DAY Architectural Ltd  
**Brick:** Staffordshire Slate Blue Smooth



Architect  
**Stride Treglown, Bristol**  
Telephone  
**0117 974 3271**  
[www.stridetreglown.com](http://www.stridetreglown.com)

## 42a Gloucester Road, Almondsbury

This development of four new sustainable dwellings and existing bungalow upgrade leaves behind the rigid geometry of the surrounding streetscape in favour of a gently radiating layout that follows the arc of the sun, knitting in the existing dwelling and taking full advantage of the solar gain from the highly glazed south-facing rear elevations.



### BRICK

Smooth Blue  
Tilebrick

The houses themselves employ a bold wrap-around sculptural roof design that merges the external terrace, wall and roof into a seemingly single contemporary form that blurs the distinction between building and surrounding space.

Smooth Blue Tilebricks to the main external walls work together with the grey of the roof tiles to create the illusion of an unbroken material, visually tying wall and roof together and reinforcing the architect's vision of a continuous form.

## ALSO IN THIS CATEGORY

Park House, London



**Architect:** Zac Monro Architects  
**Brick:** Smooth Blue Tilebrick

Kingswood School, Bath



**Architect:** Mitchell Taylor Workshop  
**Brick:** Fireborn Blue Riven  
© Peter Cook

Bentley Priory, Stanmore



**Architect:** Clague Architects  
**Brick:** Leicester Multi Cream, Heritage Red Blend

## St. Mary of Eton Church - The Mission, London

To meet the changing needs of the community, a sensitively developed scheme of 26 luxury new-build and loft-style apartments, new rectory and associated community buildings, have been created around St Mary of Eton, a Grade II listed church established by Eton College in the late 19th century.



The new buildings have been designed to frame and strengthen the profile of the church, with distinctive external brickwork that references the care and detailing of the church and surrounding historic architecture.

The predominant red brick façades are broken by a subtle diamond pattern of white and glazed blue bricks that appears to fold around the buildings like cloth, creating a finish that is at once vibrant yet has a solid and sculpted quality, giving the new buildings a sense of permanence and belonging.

**BRICK**  
Heritage  
Red Blend,  
Glazed Bricks

Architect  
**Matthew Lloyd Architects**  
Telephone  
**020 7613 1934**  
[www.matthewlloyd.co.uk](http://www.matthewlloyd.co.uk)

### ALSO IN THIS CATEGORY

19, Fairlawn Drive, Redhill



**Architect:** RS Design Architect Ltd  
**Brick:** Beckley Medium Multi, Cheddar Red

Queens Park Station - Ticket Office, Paignton Devon



**Architect:** MTA Architects  
**Brick:** Chester Red Blend, Staffordshire Slate Blue Smooth

ABODE, Great Kneighton



**Architect:** Proctor and Matthews  
**Brick:** Ivanhoe Cream, Himley Ebony Black

## Kings Road Arches, Brighton

A distinctive feature of the Brighton seafront for more than 120 years, the 26 original brick arches between the old West Pier and Alfresco's restaurant have been re-built to their original Victorian glory, as part of a major redevelopment of the area.

Supporting the promenade and main A529 carriageway above, the structures are fundamental to the city's transport infrastructure and the decision to demolish and rebuild with a new reinforced deck and brickwork façade was taken following a structural survey.



Working closely with Ibstock Kevington, the new façade was developed as a series of precast pillar sections and segmented fair-faced arches, cast as single 3-metre wide units and infilled in-situ with matching brickwork. The castings are faced with Cattybrook Cheddar Red brick slips in traditional English garden wall bond and narrow, 5mm joints, with every detail, from the elaborate brick plinths to the bullnose brick trim at the head of each arch, faithfully recreated to match the original design.

Architect  
**Solar Architecture Ltd**  
Telephone  
**01903 815903**



### ALSO IN THIS CATEGORY

Coleman's Farmhouse, Theydon Mount



**Architect:** Wighton Architects  
**Brick:** Swanage Handmade Light Red

BRE Ravenscraig, Plot 9, Lanarkshire



**Architect:** Kraft Architecture  
**Brick:** Calderstone Gold Slips/Brickshield System

Kelvingrove Bowling & Tennis Pavilion, Glasgow



**Architect:** Glasgow City Council  
**Brick:** Cheddar Red

## From the knees of my nose to the belly of my toes (Sliding wall, Margate)

Known for his playful yet sculpturally complex remodelling of derelict buildings, artist Alex Chinneck created a unique effect to this derelict 3-storey house in Margate with a new 'slipped' façade that leaves the upper storey open to view.



Recognised for his new and ambitious applications of everyday construction materials, Chinneck used lbstock Kevington's Fastwall™ brick cladding system, a versatile, precision-engineered composite of 20mm thick brick slips bonded to a patented backing, to create his visually exciting artwork.

With guidance from Smith & Wallwork Engineers, the old bay windows and upper storey façade were completely removed, and the new Fastwall™ panels of Birtley Olde English slips on a semi-rigid GRP substrate, fixed directly to a new timber batten framework. At the lower storey, a timber joist framework creates the sliding wall transition from vertical to horizontal.



Miner on the Moon, Blackfriars Road, London



**Architect:** Alex Chinneck, The Sculpture House, London  
**Brick:** Old Funton Chelsea Yellow

YHA South Downs, Lewes



**Architect:** Mackellar Schwerdt  
**Brick:** Hamsey Mixed Stock (Bricks & Pavers)

Designer  
**Alex Chinneck, The Sculpture House, London**  
Telephone  
**0208 533 6777**  
[www.alexchinneck.com](http://www.alexchinneck.com)



## Eltham Hill College, Greenwich

Brick is the signature material for the redesigned campus of this large girls' secondary school, situated close to Eltham Palace and alongside the Grade II listed remnants of a Tudor brick-built summerhouse and wall.

Inspired by the historic remains, distinctive brick types are used in a style that makes reference to the diamond patterns of Tudor era windows, presenting a strong visual statement that sits the school comfortably within its neighbouring environment, yet strongly announces its presence within the local community.



### BRICK

Slate Blue Smooth,  
Cheddar Red, Bristol  
Mixed Red

The interlocking diamond pattern, created using contrasting smooth orange/red, textured red and blue/black bricks, wraps around the building as a consistent surface, punctuated only by large classroom windows that punch into the pattern at intervals to suit the internal plan.



### ALSO IN THIS CATEGORY

Wade Deacon High School, Widnes



**Architect:** Sheppard Robson  
**Brick:** Silver White

St. Benedict's High School, Renfrewshire



**Architect:** Hoopers Architects Ltd  
**Brick:** Linear Riven Cream

St. Munchins College, Limerick



**Architect:** Healy Partner Architects  
**Brick:** Atlas Smooth Red

Heriot Watt University Student Accommodation, Edinburgh

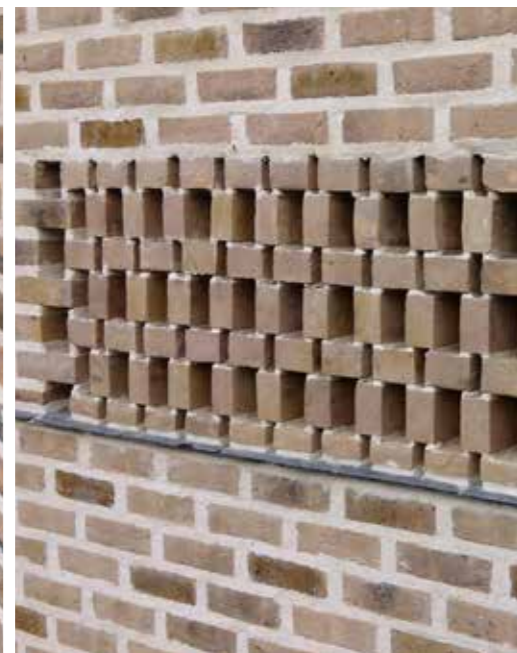


**Architect:** RMJM Architecture Ltd  
**Brick:** Millburn Ashen Brown

Architect  
**Hawkins Brown**  
Telephone  
**0207 336 8030**  
[www.hawkinsbrown.com](http://www.hawkinsbrown.com)

## Brick House, 22 Dalkey Avenue, Co Dublin

Overlooking the city and the sea, this unique house is built on a steeply sloping site that backs onto the granite quarry used to build the harbours of Dublin Bay below.



Sitting above an independent apartment at lower level, the main courtyard leads to two entrances, one of which accesses the upper floor living space via an external staircase, the other a formal entrance door leading to a brick inglenook fireplace and accommodation beyond. On the upper floor, rooms formed by two brick fireplaces and internal steel and glass screens, lead to three generous brick lined terraces.

Architect  
**de Blacam and Meagher**  
Telephone  
**+353 1 453 4240**  
[www.deblacamandmeagher.com](http://www.deblacamandmeagher.com)

A mix of buff and burnt sienna colour bricks are used throughout the property, characterised by extra wide mortar beds, perpends and flush joints giving a house an almost naïve simplicity of form to contrast with the iron-rich granite hill on which it stands.

### BRICK

Ivanhoe Cream,  
Cooksbridge Yellow

### ALSO IN THIS CATEGORY

No 2, Glen Road, Balinteer, Dublin



**Architect:** Stephen Mulhall, nineteeneighty  
**Brick:** West Hoathly Dark Multi Stock

St Joseph's Hospital extension, Dublin



**Architect:** O'Briain Beary Architects  
**Brick:** Ailey Red, Radial Specials

The Monaghan Institute of Further Education, Ireland



**Architect:** Oppermann Associate in collaboration with Hawkins Brown  
**Brick:** Onyx Black, Drumquin, Staffordshire Blue Brindle Smooth  
© Geray Sweeney

Open our newest celebration of Ibstock clay products and you'll find inspirational photography and innovative new features designed to bring the diversity of the Ibstock range to life.

Stunning photography covers award-winning schemes and page after page of innovative products in brilliant detail.

Brand new photography includes enlarged product shots, plus close up detailed shots of individual textures so you can see the unique characteristics of Ibstock bricks. Our special shaped bricks now have new illustrations showing how the special shapes are used.

So when it comes to selecting the best bricks, the choice is easy...

It has to be Ibstock.

Order your copy today.



To accompany this Portfolio of Ibstock products, we have created the Ibstock Explore App for iPads that tells you even more about Ibstock and our products; from exploring the brickmaking processes that create such a diverse range of fired clay products to inspiring project galleries that showcase the colours and textures throughout our range. Suitable for iPads, Ibstock Explore gives you exclusive access to a range of project images, information and video content, designed to supplement this Portfolio and to help you to understand and appreciate our extensive product range.

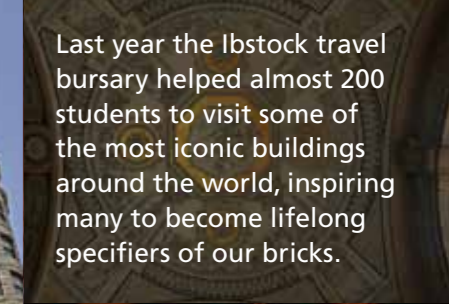
Start your Ibstock Explore journey today.



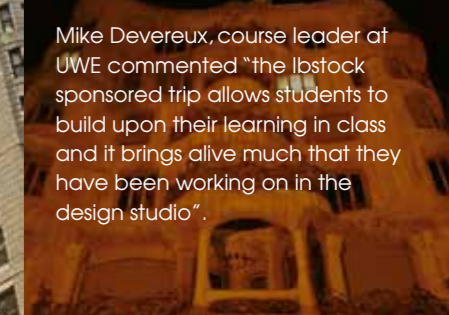
Bath University – Budapest



University of Birmingham - New York



Last year the Ibstock travel bursary helped almost 200 students to visit some of the most iconic buildings around the world, inspiring many to become lifelong specifiers of our bricks.



Mike Devereux, course leader at UWE commented "the Ibstock sponsored trip allows students to build upon their learning in class and it brings alive much that they have been working on in the design studio".



University of the West of England – Barcelona



GREAT VALUE,  
GREAT QUALITY,  
GREAT SERVICE.

**Ibstock Brick Limited**  
Ibstock, Leicestershire, LE67 6HS  
t: 01530 261999  
f: 01530 257457

e: [enquiries@ibstock.co.uk](mailto:enquiries@ibstock.co.uk)

Ibstock Sales Office:  
0844 800 4575

Design & Technical Helpline:  
0844 800 4576

Sample & Literature Hotline:  
0844 800 4578

Special Shapes and Brickwork  
Components Sales Office:  
0844 736 0350



**Published by:**  
Ibstock Brick Ltd.,  
Ibstock, Leicestershire, LE67 6HS

**Editor:** Paul Smith

**Important information about CE MARKING**

From 1st July 2013 it is mandatory for any construction product, covered by a harmonised European Standard (hEN) containing a 'ZA' annex, to carry a Declaration of Performance (DoP) and a CE mark.

Standard format clay brick and pavers have been covered by hENs since 2003 and Ibstock bricks have been CE marking since then.

Although bespoke and 'one off' special products will not fall under the scope of the hEN and require CE marking, Special Shaped bricks generally will and must carry the CE marking.

Further information and Declarations of Performance can be found at: [www.ibstock-ce.com](http://www.ibstock-ce.com)



**think** BRICK  
A BRICK DEVELOPMENT ASSOCIATION INITIATIVE

To find out more scan this using your smartphone.

For fast and easy access to the comprehensive range of Ibstock products and services visit [www.ibstock.com](http://www.ibstock.com)

© Ibstock Brick Limited 2014

NEXT TIME IN

design...

**IBSTOCK GLAZED BRICK**

Now in a virtually unlimited choice of colours, sizes and finishes to bring an extra dimension to your project.

**SIGN UP FOR THE NEXT ISSUE**

e-mail [design@ibstock.co.uk](mailto:design@ibstock.co.uk)

