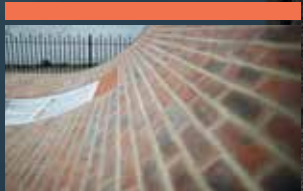


IN THIS ISSUE



Dee Cottages, Flint
BrickShield[®]



Alex Chinneck
Fastwall[™]



Ibis Hotel, Manchester
Underslung Brick Soffits

SPECIAL ISSUE

BRICK CLADDING SYSTEMS





News

MINISTER'S VISIT SHINES LIGHT ON HOUSEBUILDING'S RETURN TO FORM

Ibstock Brick, the UK's largest brick manufacturer, hosted a visit from Housing Minister Kris Hopkins MP at its redeveloped Chesterton factory in Newcastle-under Lyme, Staffordshire.

Following the release of figures from the Department for Communities and Local Government showing that the last three months have seen the fastest rate of housebuilding since 2008, the Minister was given a tour of the world-leading production site, which has benefitted from more than £20m of investment. This has enabled it to respond well to the current rise in brick demand.

The redevelopment of the Chesterton site ensures it benefits from the latest manufacturing technology for high quality and sustainable production. It has secured 80 factory-related jobs and guarantees opportunities for the local community for the next 25 years – playing a vital role in Chesterton and the surrounding region.

Kris Hopkins MP commented: "I am gobsmacked at the scale of production. I think the community of Staffordshire can be proud they have got such a high-tech facility on their doorstep. It's been great to see Ibstock's state-of-the-art factory and meet with

workers who are ramping up production and helping to get Britain building again."

Colin Richardson, Director of Manufacturing Development at Ibstock Brick, commented on the visit: "It was a privilege to welcome the Housing Minister to our site. We're really proud of our factory in Chesterton so it was a good opportunity to showcase what has been achieved with our investment in Ibstock's future. It is the most energy efficient and environmentally friendly factory of its type in the world today and has the capacity to produce 80 million bricks per year, so we're well placed to respond to the return to growth of the construction industry."

Ibstock's investment in Chesterton and re-commissioning of one of its Leicester factories in 2013 means it has capacity to bring an additional 120m bricks per year to the market from this year.

FASTSTACK™ APPROVALS MOUNT UP

Faststack™, Ibstock Kevington's range of prefabricated chimneys, have now added prestigious BBA approval to their recent CGMA accreditation, making them the smart choice for a range of chimney applications.

The GRP (Glass Reinforced Plastic) cores are clad with Ibstock brick slips and delivered to site ready for immediate installation. They are simply secured into position with 2-part epoxy adhesive then pointed to match the existing brickwork.

Available as fully working flues, suitable for venting Class 1 & 2 appliances, or in 'decorative only' options, the chimneys save time and money on site and provide a totally authentic alternative to traditional chimney construction – now with fully approved and accredited performance for total peace of mind.



BRICK FIRST WITH ENVIRONMENTAL PRODUCT DECLARATION

Brick has become the first construction product to be awarded an Environmental Product Declaration (EPD) under the BRE's recently launched EN 15804 scheme.

Based on an internationally-agreed system for calculating and reporting the environmental impacts of construction products, the EPD was carried out for the Brick Development Association on a 'generic' brick.

The award further underpins the excellent green credentials of brick, one of the industry's most enduring building components, which has origins dating back to 7000BC.

ENVIRONMENTAL PRODUCT DECLARATION

EPD Number: BREG EN EPD 000002 Issue: 01

This is to certify that this verified Environmental Product Declaration is provided by:

The Brick Development Association

Is in accordance with the requirements of: EN 15804:2012

This declaration is for BDA generic brick



CE MARKING – THE INSIDE TRACK

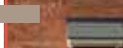





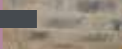


Ibstock has a new website www.ibstock-CE.com where you can quickly access Declarations of Performance for all of our CE marked products, along with relevant factory certificates, as required under the new Construction Products Regulations.

As the UK's largest brick maker we've been leading the way with CE Marking, and all of our products currently covered by a harmonised European Standard or Technical Assessment now carry the CE Mark, as required from 1st July 2013.

You can be sure that every Ibstock product you specify fully meets the new requirement, but if you need any further help or advice on what your obligations are under the new regulations, give us a ring on **0844 800 4576**.

www.ibstock-CE.com

PROJECTS

	BrickShield® Hawksley Bungalows, Ellesmere Port Kitfield Avenue, Middlewich Blacon Towers Chester Dee Cottages, Flint	08
	ERACO Project, BRE Ravenscraig	10
	Mark Group EcoHouse, Nottingham	11
	Sainsbury's Store East Kilbride	14
	Phoenix Care Centre, Grangegorman	16
	Alex Chinneck, Artist	18
	Clay farm, Cambridge	20
	Ibis Hotel, Manchester	23
	Bentley Priory, Stanmore	24

FEATURES

Brick Cladding Systems

- 04 BrickShield®
- 12 Fastwall™
- 22 Precast and bonded brickwork

Brick Awards 2013 WINNERS



27

26

Brick Awards
2014

34

Back to Basics
Brick Cladding

02

Brick Cladding
News

Front Cover Image: Phoenix Care Centre, Grangegorman

BRICKSHIELD®

After years of rigorous testing into key areas such as thermal performance, strength and durability, BrickShield® has become the first system of its type to receive accreditation from the BBA.



Agrément Certificate I3/4997

Brick has been the traditional cladding material for UK buildings for generations, providing the range of rich hues and textures that have helped to create landscapes for the future.

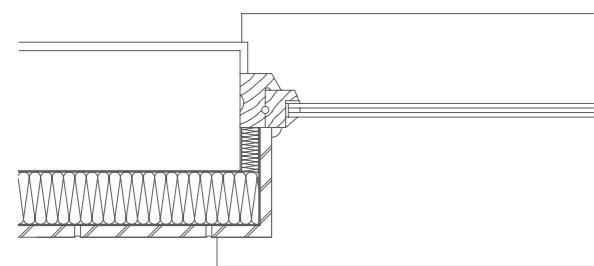
In today's fast moving world, however, time and cost sometimes preclude the traditional approach. With Ibstock cladding systems, it is possible to achieve authentic brick finishes, with similar durability, colour range and visual effects, quickly and effectively.

Ideal for both new build applications and for upgrading the performance and appearance of old solid wall homes, BrickShield® combines high performance Rockwool thermal insulation with a traditional Ibstock brick finish, in a single system.

Insulation boards are simply bonded and mechanically fixed to the exterior face of the wall, prior to finishing with Ibstock BrickShield® Natural Clay Brick Slips, site bonded with BrickShield® Adhesive. Once set, the wall is pointed with BrickShield® BrickPoint.

The process is simple, quick and involves minimal disruption for residents, who can remain in their homes throughout the work. Full contractor training and support is available throughout the project and with U-values improved to 0.25 W/m²K or better, as well as 60-year brick slip durability warranty, it's the perfect upgrading solution.

With BrickShield® there's also the option to select virtually any brick colour or texture from Ibstock's extensive range, for unlimited design flexibility.



BRICKSHIELD® JAMB DETAIL - INSULATED BRICK SLIP

BRICKSHIELD® IS THE FIRST BRICK AND EWI SYSTEM TO BENEFIT FROM BBA - WHICH MEANS EXTENSIVE TESTING AND IS A REAL CONFIDENCE BOOSTER!

Go to pg 8 to view the full project



WITHOUT BRICKSHIELD

WITH BRICKSHIELD

BRICKSHIELD® PRODUCT RANGE

STANDARD RANGE

Our standard range includes carefully selected real clay slips that have all the beauty, durability and protection of a brick but in an easy to use tile format just 20mm thick. The decorative face of the brick slip has been designed to match the standard brick size of 65mm high x 215mm long.



Ravenhead Red Smooth | 3501



Ravenhead Red Rustic | 3502



Oldcott Rustic | 3532



Trafford Multi Rustic | 3576



Bracken Brown Rustic | 3505



Hearted Red Rustic | 3516



Roughdales Red Multi Rustic | 3579



Smooth Village Mixture | 3536

PREMIER RANGE

The Premier BrickShield® range allows you to select almost any Ibstock Brick cut down to a thickness of 20mm.



Dorset Multi Red Stock | 4941



Sevenoaks Yellow Stock | 0730



Ivanhoe Cream | 0054



Melton Antique Blend | 0578



Himley Ebony Black | 0354



Atlas Smooth Blue | 2249



Blue Glazed | KGB - Blue

DESIGNER RANGE

Our designer range is a selection of the highest quality brick slips. Available in heights of 35mm, 65mm and 71mm and lengths up to 400mm, these beautiful slips can be used to create a stunning finish.



Designer Smooth White



Designer Smooth Grey



Designer Smooth Red Purple Multi



Designer Smooth Metallic Black



Designer Smooth Black



Designer Black Textured



Designer Cream Textured

CHOOSE A FINISH AND COLOUR FROM A LARGE RANGE OF PRODUCTS

BBA APPROVAL FOR BRICKSHIELD®

BrickShield® has received accreditation from the British Board of Agrément (BBA), making it an ideal choice for those looking to create energy efficiencies under the Energy Company Obligation (ECO) and the Green Deal.



- BrickShield® Natural Clay Brick Slips
- BrickShield® Adhesive Mortar
- BrickShield® Insulating Wall Anchors
- Rockwool® Façade Ultra
- Post pointed BrickShield® Natural Clay Brick Slips with BrickShield® BrickPoint
- Integral Base Profile

The only real brick slip external wall insulation system to achieve this recognition, BrickShield® is a joint development by Ibstock and Rockwool, the world leader in high performance stone wool insulation.

The accreditation follows three years of rigorous testing, with the BBA providing an independent assessment of the performance and durability of the system, including

key areas such thermal performance, strength and the stability of the system to wind loads. It also received the highest possible A1 rating for fire performance.

The accreditation means that BrickShield® not only offers outstanding aesthetics, but now also comes with independently proven system performance.

BRICKSHIELD® - AT A GLANCE...

STEP 1



Fix base profile. Capping trims are also available.

STEP 2



Rockwool® Façade Ultra coated with BrickShield® Adhesive Mortar is then applied to sound, dry and smooth masonry.

STEP 3



Fix with BrickShield® Insulating Wall Anchors for ultimate durability.

STEP 4



BrickShield® Adhesive Mortar is then applied to the surface of the Rockwool® Façade Ultra. BrickShield® Natural Clay Brick Slips are laid onto the adhesive mortar, keeping to line and level for an even appearance.

STEP 5



BrickShield® Spacers can be used temporarily until the mortar sets.

STEP 6



BrickShield® Special-shaped Clay Brick Slips are available for corners and reveals.

STEP 7



The joints between the slips are finished with BrickShield® BrickPoint for a beautiful brick finish.

STEP 8



Reveal trims and extended sills are fitted as required.

Changing faces - BrickShield®

The versatility of the BrickShield® system makes it ideal for both new-build and upgrading projects – from existing hard-to-treat solid wall homes to modern apartment blocks. It's a quick, efficient way of combining high thermal performance with a new, durable and maintenance-free real brick finish – in a full range of colours and textures to match any architectural style or period.

HAWKSLEY BUNGALOWS, ELLESMERE PORT



BEFORE TREATMENT

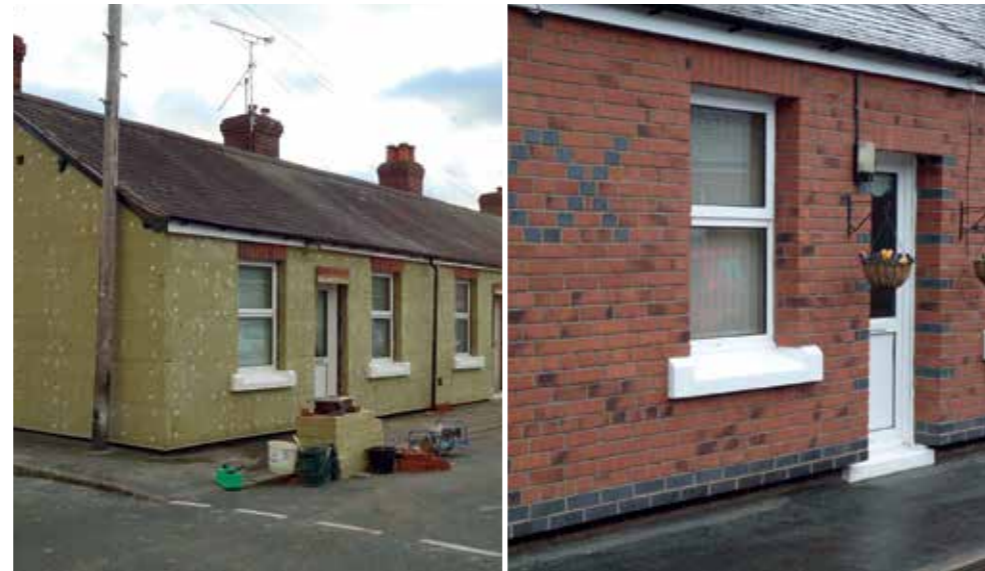
AFTER TREATMENT

This group of 104 Hawksley-type prefabricated metal-clad bungalows were in need of thermal upgrading and refurbishment to meet modern housing standards.

BrickShield® was chosen by client, Plus Dane Housing Association, to provide the thermal upgrade needed whilst minimising disruption to elderly residents. They also preferred the durability and appearance of an authentic brick finish.

The project proved so successful that an extra 7 properties were completed within the original budget, and the first phase of 41 homes completed in just 16 weeks.

DEE COTTAGES, FLINT



DURING TREATMENT

AFTER TREATMENT

The terrace of 36 historic workers houses were typical of the local architectural style of the late 19th century, and formed an important part of Flintshire County Council's Townscape Heritage initiative.

When upgrading became necessary to ensure sustainable management and modern standards of performance, Flintshire County Council chose BrickShield® for its durability, cost-effectiveness and the opportunity it presented to restore and enhance the original polychromatic brickwork - an important part of the area's unique industrial character.

BLACON TOWERS, CHESTER



BEFORE REFURBISHMENT OLD NO-FINES FINISH

AFTER TREATMENT

The refurbishment of three 1960's 13-storey residential blocks in Chester's Blacon District is part of a major regeneration scheme for the area.

To minimise disruption to tenants, client, Chester and District Housing Association, used high performance external wall insulation systems to upgrade the thermal performance of the old No-Fines concrete walls, with the help of funding from British Gas.

Whilst upper storeys feature a rendered finish, BrickShield® was specified for the lower two storeys to meet target U-values and provide a durable brick

grounding and improved aesthetic to match the surrounding residential vernacular.

Ibstock provided design and technical support for the project, including toolbox talks emphasising the bricklaying principles and techniques associated with the brick cladding.

As a result of the upgrade, external wall U-values have improved from 2.4 to 0.35 W/m²K.

KITFIELD AVENUE, MIDDLEWICH, CHESHIRE



BEFORE TREATMENT

AFTER TREATMENT

Kitfield Avenue comprises a mix of privately-owned homes and social housing. When Plus Dane Housing Association were faced with upgrading the old solid walls of their stock to complement other recent thermal improvements they needed an authentic brick finish, so as not to disturb the visual balance of the street.

BrickShield® was chosen for its outstanding performance, increasing the previous 2.02 W/m²K external wall U-value to an impressive 0.33 W/m²K, and winning the project the title of 'Best Refurbishment and Renovation Project' in the prestigious 2012 BDA Brick Awards.



“ The designers have cleverly utilised a system for its thermal qualities, displaying an insight into innovative ways to improve our built fabric whilst keeping the aesthetic beauty of the material. ”

Judges Report

**BRICKSHIELD® IS PUT TO THE TEST
ON SCOTLAND'S EXISTING HOMES**

ERACO project, Plot 9, BRE Innovation Park, Ravenscraig

Effectively a 'retrofit R & D laboratory', Plot 9 of the European ERACO STAR project at the BRE Innovation Park, Ravenscraig has been built to evaluate different thermal and acoustic upgrading solutions for Scotland's poorly performing existing housing stock.



Architect
Kraft Architecture, Glasgow
Telephone
0141 552 5722
www.kraftarchitecture.co.uk

The building replicates one of Scotland's thermally and acoustically worst performing apartment types, the '4-in-a-block', of which approximately 265,000 exist in Scotland alone. Four flats over two levels, in a traditional semi-detached format, provide a test bed for different retrofit solutions, including external thermal cladding.

BrickShield® was chosen to upgrade existing uninsulated, lined and rendered external walls of flats G1 & F1 on the left half of the building.

It was considered particularly suitable for the ERACO project because of its high thermal /acoustic performance and flexibility, which enables it to be adapted to suit any building style or design.

The external solution will provide additional aesthetic and long-term performance benefits, especially for Scotland's older properties and, being non-invasive, obviates the need to decant residents during installation – a major plus for this application.

The performance of the different solutions is being monitored over an extended period by Edinburgh Napier University.

BRICK

Calderstone
Gold



Architect
**The University of Nottingham, Department of
Architecture and Built Environment**
Email
ceh@nottingham.ac.uk
www.nottingham.ac.uk/creative-energy-homes

Mark Group EcoHouse, Nottingham

Part of The University of Nottingham's Creative Energy Homes project, the Mark Group EcoHouse provides a research vehicle for modern methods of construction and sustainable/renewable energy technologies.

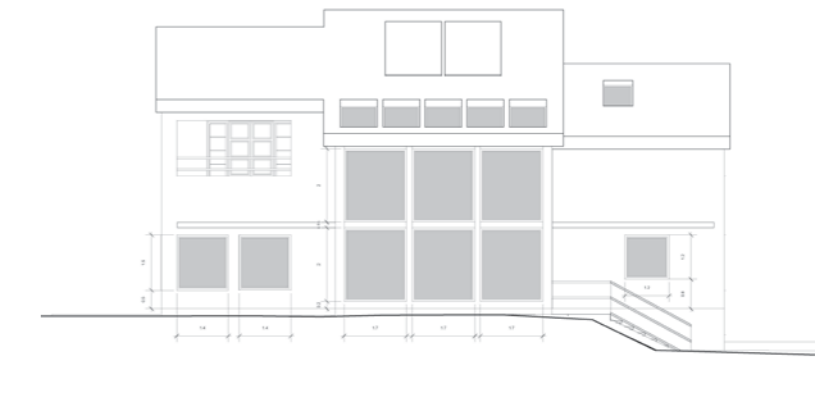
The four-bedroom detached house has been designed by interdisciplinary members of the teaching staff and a construction workforce of architecture and building technology students.



Oriented to maximise solar energy gain, the lightweight steel-framed structure combines an array of low energy features with a highly insulated external fabric.

Rendered elevations to the front and sides of the property are complemented aesthetically to the rear by Ibstock's BrickShield® system, providing the very high levels of thermal performance demanded, in combination with a traditional durable external brick slip finish.

Research students from the University are working alongside specialists from Laing O'Rourke Engineering Excellence to monitor the performance of the external wall systems, as part of a comprehensive monitoring programme to provide valuable data for future low energy developments.



WHEN TIME IS SHORT – FASTWALL™

WHEN SCHEDULES ARE TIGHT AND THE PROJECT DEMANDS AN AUTHENTIC AND DURABLE BRICK FINISH, FASTWALL™ PROVIDES THE ANSWER.

An innovative way to clad, infill or build a brick wall fast and efficiently, Fastwall™ also provides the perfect solution for modern deep soffits, regardless of the area involved. And with Fastwall™ you won't have to compromise on design – it's available with any Istock or other brick finish.



FASTWALL™ PANELS ARE APPLIED TO AN APPROPRIATE SUBSTRATE



FASTWALL™ INSTALLATION

Fastwall™ is an innovative weather resistant way to clad, infill, or build a wall with real brick slips at incredible speed and efficiency. Fastwall™ can be supplied in virtually any brick type to replicate traditional brickwork perfectly.

WHERE TO USE FASTWALL™

The system is ideal for either exterior or interior applications. It has been successfully used on a wide range of projects including: shop fit-outs where Fastwall's™ ready availability (typically 7 to 10 days) and rapid construction was highly prized to minimise the loss of trading, to the refurbishment of pedestrian underpasses where it's high strength and durability was an essential element.

Use Fastwall™ for:

GABLE STAGGERS

OVER CLADDING OF EXISTING WALLS

LIGHTWEIGHT FRAMING

FASTWALL™ PERFORMANCE

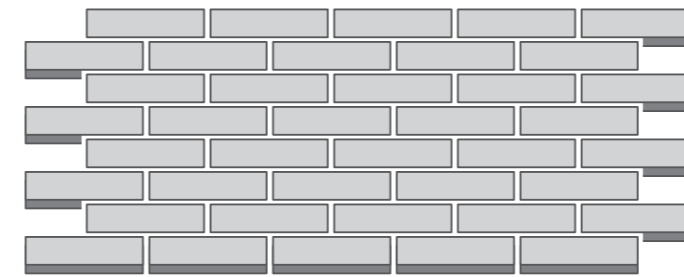
Fastwall™ is a precision engineered composite of 20mm thick brick slips bonded to a patented backing and featuring a unique interlocking system.

For example, the standard Taban panel covers 0.66m² and weighs just 24kg. Light weight makes Fastwall easy to install on site.

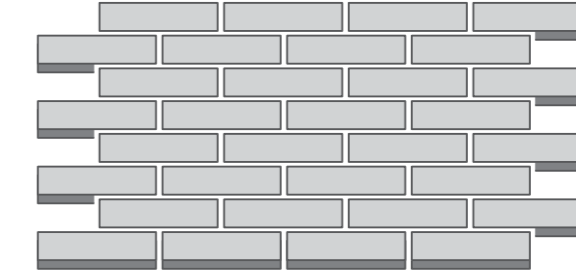
In addition to on site advice, a complete scheduling and take-off service is available, as well as numbered panel kits with corresponding site drawings to ensure that even the most complex installation is hassle free!

Fastwall holds full third party performance accreditation by CERAM, the ceramic industry test centre.

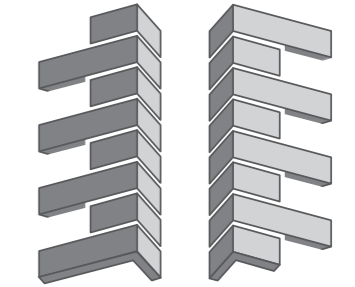
FASTWALL™ COMPONENTS



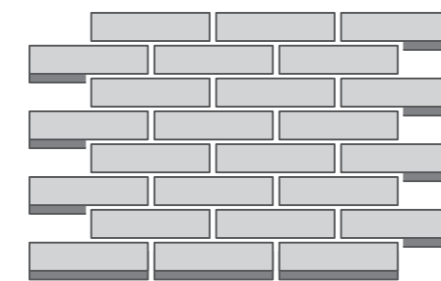
TABAN STANDARD PANEL 5 x 8



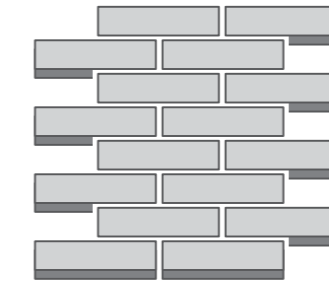
DORBEN PANEL 4 x 8



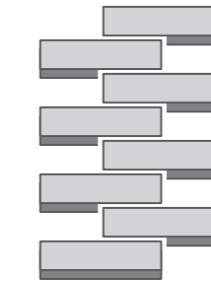
LEFT & RIGHT WINDOW REVEAL



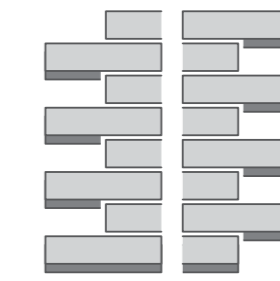
GURBAN PANEL 3 x 8



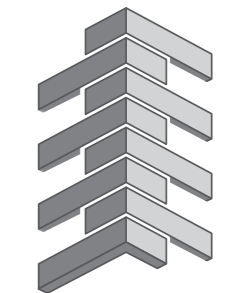
JIRAN PANEL 2 x 8



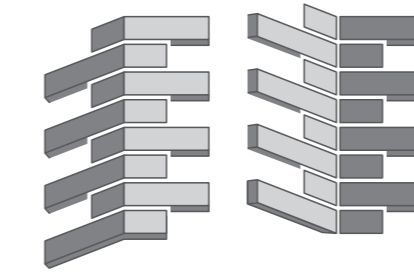
NIKEN PANEL 1 x 8



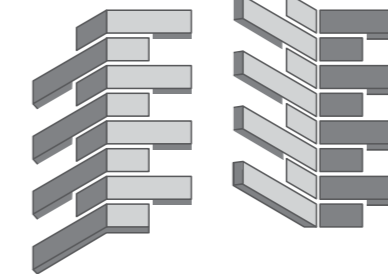
LEFT & RIGHT STOPEND/STARTER



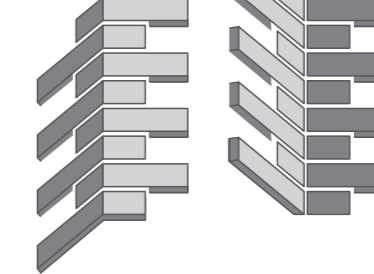
90° EXTERNAL RETURN



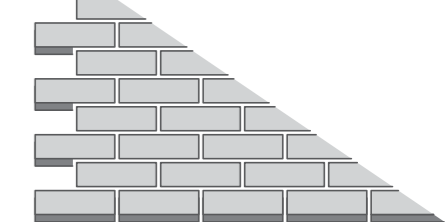
30° EXTERNAL & INTERNAL CORNER PANELS



45° EXTERNAL & INTERNAL CORNER PANELS



60° EXTERNAL & INTERNAL CORNER PANELS



GABLE CUT TABAN PANEL



Extension to Sainsbury store, East Kilbride

The extension and refurbishment of Sainsbury's East Kilbride store was part of a major expansion plan by the leading UK supermarket chain.

Constructed alongside the original store, the new extension has doubled the store's previous floor space and added a range of facilities including a new checkout area and café.

The challenge for contractors Barr Construction and ADF Architects, was to meet a very tight 30-week build and refit deadline with no store closure – the first time in the company's history that this had been achieved for a store outside London.

The solution was to use a steel frame, clad with a 100mm thick composite metal cladding and finished with brick to compliment the glazed grey panel frontage of the existing store.

After exploring alternative cladding solutions, the decision was taken to use Istock's Fastwall™ system. Prefabricated offsite, the brick-work panels were fixed and jointed with standard mortar to give the appearance and performance of a normal brickwork wall.

A range of standard 8-course high panels were secured to timber battens and packers fixed through the composite cladding into the metal framework, with special external corner panels and stop-end units giving a crisp finish to window, door and corner detailing.

The use of hoists, rather than scaffolding, for fixing the Fastwall™ panels enabled external cladding of the whole area to be completed in just two weeks, contributing significantly to the very short overall build time.

Two horizontal bands of buff coloured glass-reinforced cement units mimic the buff coloured soldier courses of surrounding architecture, whilst the choice of Istock's Roughdales Red Multi Rustic and base courses of Istock's Staffordshire Slate Blue Smooth, harmonise the extension comfortably within the local vernacular.

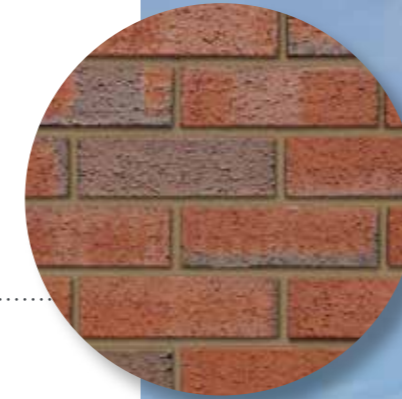
“Fastwall saves time and cost on a very tight build programme.”

Architect
ADF Architects

Telephone
0141 226 8010
www.adf.co.uk

BRICK

Roughdales
Red Multi
Rustic



AWARD WINNING PROJECT

Voted 'Best Health Building' in the 2013 RIAI Irish Architecture Awards and winner of Best International Project in the prestigious Brick Development Association Brick Awards 2013.

Phoenix Care Centre, Grangegorman, Co. Dublin

The Phoenix Care Centre is a state-of-the-art replacement for the old 1814 Grangegorman Mental Health facility, one of the oldest purpose-built facilities in Ireland.

BRICK

Grangegorman Blend (adaptation of Ivanhoe Cream)



Architect
Maloney O'Byrne, Dun Laoghaire
Telephone
+353 1400 3200
www.mob.ie



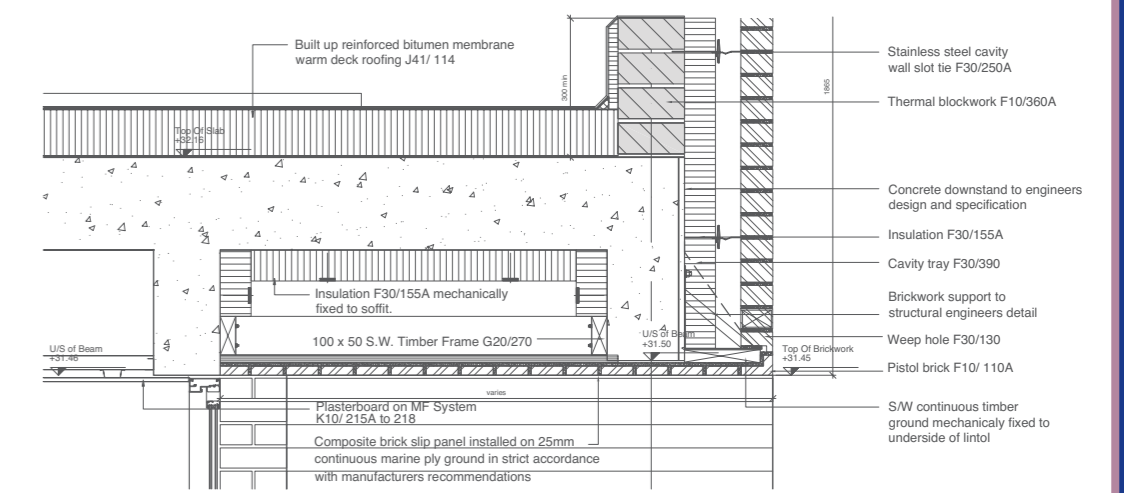
The 54 bed low-secure unit has been designed to provide a non-institutional, non-threatening therapeutic environment for mental health patients.

Created as a non-orthogonal arrangement of single, two and three-storey blocks around two central courtyards, the building places great emphasis on internal/external spatial relationships with green spaces woven in and garden colours brought into the interior to create an atmosphere of calm and tranquillity. Architects Maloney O'Byrne worked with Ibstock to develop a special brick blend for the external masonry walls that provided a warm finish with a slight grey hue and natural texture to unify the different elements of the building.

To reinforce the contemporary design, the brick detailing was continued to the underside of large exposed soffit areas using Ibstock Fastwall™ panels.

The panels, which combine 20mm thick brick slips of the same Grangegorman Blend bonded to a patented glass reinforced plastic (GRP) backing system, were secured to a timber framework fixed to the exposed concrete soffits and jointed with standard mortar to provide a continuous high quality matching finish.

The earthy colour of the specially-created Grangegorman Blend mediates well between the adjoining residential area and proposed new Healthcare and Educational facilities on the site, and the continuity of finish helps in the creation of a natural and less intimidating environment for the various categories of service users catered for at the new centre.



A DIFFERENT VIEW OF BRICKWORK ALEX CHINNECK

Sliding wall, Margate

Chinneck has created a unique effect to this derelict 3-storey house in Margate by replacing the original brick frontage with a new 'slipped' façade that leaves the upper storey open to view.

The lightweight wall construction uses Istock Fastwall™ panels on a semi-rigid GRP substrate.

With guidance from Smith & Wallwork Engineers, the old building frontage was prepared by the removal of both bay windows and the complete upper storey façade, and the new panels fixed directly to a new timber batten framework.

At the lower storey, a timber joist framework has been used to create the sliding wall transition from vertical to horizontal.

BRICK

Birtley Olde English

FASTWALL™ HELPS FUEL ARTIST'S INNOVATIVE APPROACH TO 'RESHAPING' OLD BUILDINGS.

Inspired by his upbringing amongst the old industrial architecture of London's East End, artist, Alex Chinneck, is fast gaining a reputation for his playful, yet sculpturally complex, remodelling of derelict buildings.

In his search for new and ambitious applications of everyday construction materials, he recognised the simplicity, speed and versatility of design offered by the Fastwall™ brick cladding system, and now uses this, with the support of Istock Kevington, on major building-related projects – some of which are shown here.



Artist
Alex Chinneck,
The Sculpture House, London
<http://thesculpturehouse.co.uk>

Upside-down house, Blackfriars Road

This disused building on Blackfriars Road has been turned upside down as part of the 2013 Merge arts festival, held annually to celebrate the culture and heritage of London's Bankside.

Originally a livery stables, the 1780 building had fallen derelict, until Chinneck's artistic genius transformed it into a work of art.

With the help of Istock Fastwall™ cladding system, it has been possible to recreate a realistic brick frontage with all of the complex structural detailing demanded by the upside-down design.

BRICK

Funton Old
Chelsea Yellow



Clay Farm, Great Kneighton, Cambridge

A new large scale community on the outskirts of Cambridge, close to the City's Addenbrooke's Hospital, the Clay Farm development will deliver 2300 new homes, with a range of supporting educational, retail and community facilities.

BRICK

Ivanhoe Cream/
Himley Ebony
Black



Arranged around a central structured Court, reminiscent of the urban form of Cambridge colleges, the development transitions to a more rural atmosphere at its boundaries, reflecting the surrounding village vernacular.

A mix of mews streets, three-storey courtyard saw-toothed terraced houses and loose clusters of smaller two and three-storey homes, the site is characterised throughout by a base palette of Ivanhoe Cream stock bricks, highlighted by distinctive textured panels of specially cut contrasting Himley Ebony Black bricks.

Reinforcing the contemporary theme, architects Proctor and Matthews have continued the brick detailing to the underside of large exposed ground floor soffits using Ibstock Fastwall™ panels,

fixed directly back to the substructure. Ibstock Kevington deep precast lintels, faced with matching brick slips and pistols, create a similar seamless transition around door and window openings.

Brick panels are created using split bricks, specially selected and cut by Ibstock Kevington to expose the perforation, and laid with the inside face out to create a distinctive textured appearance.

Around window openings, bricks are cut to the end perforation, providing a longer brick to suit the deep recessed design.



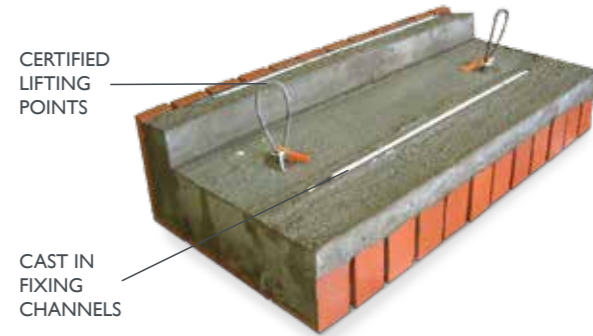
Architects
Proctor & Matthews, London
Telephone
020 7378 6695
www.proctorandmatthews.com

UNDERSLUNG™ BRICK FACED SOFFITS

Deep reveals and soffits are an increasingly popular design feature that adds an extra depth and dimension to masonry façades.

To create these effects the surrounding brickwork bond is carried over the openings, whilst still maintaining an exposed brick soffit without the need for unsightly exposed supporting steelwork.

The unique expertise of Ibstock Kevington in the design and manufacture of masonry arches means we have developed an effective solution to realise this popular design feature on site. Underslung™ soffits are recommended. They are ideal for unusually shaped and long openings or where there is restricted access or little or no bearing surfaces available. A stainless steel fixing channel is cast into a masonry faced soffit unit, which is then fixed to site installed support angles.



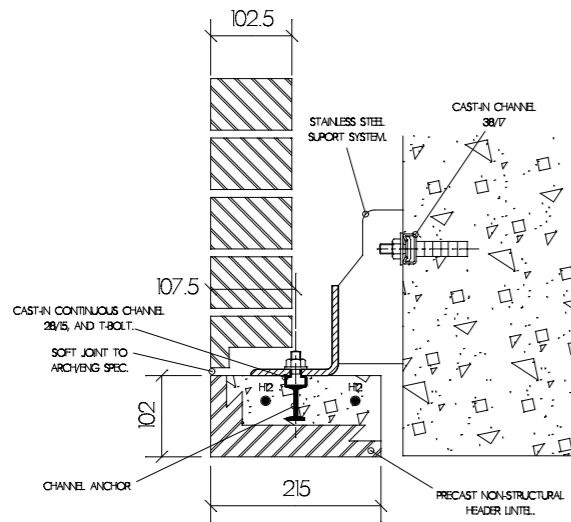
CERTIFIED LIFTING POINTS

CAST IN FIXING CHANNELS

DEEP SOFFIT UNIT WITH CAST IN FIXING CHANNELS



FIXING BRACKET DETAILS



PRECAST NON-STRUCTURAL UNDERSLUNG™ SOFFIT

PRECAST AND BONDED BRICKWORK COMPONENTS

Often used to create complex detailing such as feature arches, lintels and deep brickwork soffits, these products allow for creative designs and features and enable brickwork to be used in otherwise impossible locations on a building.

PRECAST

Brick slips are cut to include a "dovetail" in the rear. These units are then laid face down in a mould and concrete is poured over the back of the bricks to form a totally mechanical key. This method of manufacture allows everything to be manufactured in house, giving total flexibility and control. Precast products are manufactured at our Manchester and Thornley factories.

Decades of design and engineering expertise and the highest standards of accuracy and precision means components can be supplied up to 10m in length, ready to fit, and complete with integral lifting points and keys, for simple and perfect location in your building.

All precast units come with the benefit of full CAD design and structural engineering

support to turn design concepts into easy-build structural elements – regardless of whether they are one-offs or multiple repeat details. And for peace of mind, these fabrications generally have the benefit of BBA or third party accreditation.

BONDED

An alternative to the precast method of manufacture, bonded components have been manufactured for three decades by Ibstock Kevington, at plants throughout the UK. These products are generally available with shorter lead times than precast products.

Brick slips are accurately cut and then chemically bonded to concrete and alternative backing units to produce a wide variety of structural and non-structural components which allow for creative and inspirational brickwork designs.



Ibis Hotel, Great Ancoats, Manchester

Situated at the junction of Pollard Street and Great Ancoats Street on the fringes of Manchester's city centre, the new Ibis budget hotel has been designed to respect the heritage of an area that was key to the development of the Industrial Revolution.

STAINLESS STEEL UNDERSLUNG™ BRICK SOFFITS AT MUCH LOWER WEIGHT THAN TRADITIONAL CAST UNITS



BRICK
Staffordshire
Slate Blue
Smooth

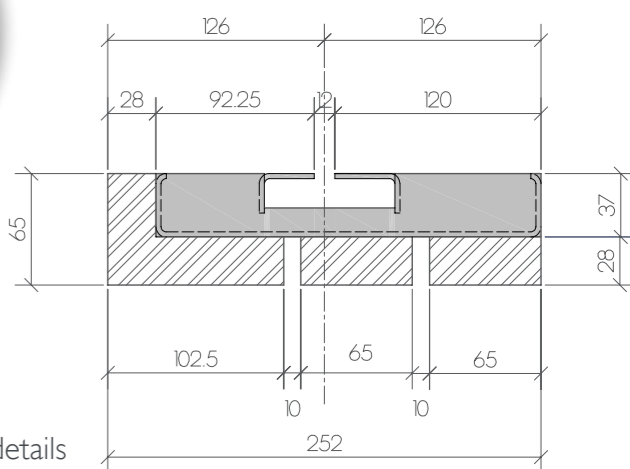
Architects
5plus Architects, Manchester
Telephone
0161 228 0211
www.5plusarchitects.com



The stark linear design, reminiscent of the style of the old cotton mills that still dominate the local architecture, has been reinforced by the use of Ibstock Staffordshire Slate Blue Smooth bricks.

The imposing brick façades are created by a combination of vertical projecting brick panels and deep vertical reveals and windows. These present the impression of three horizontal blocks, reinforcing the linearity of the design. To complete the effect, Manchester-based 5plus Architects specified matching brick cladding to the underside of all projecting soffits.

With weight an issue on site, the original specification for pre-cast concrete units was substituted for an alternative design using stainless steel Underslung™ box section clad with Staffordshire Slate Blue brick slips in prefabricated units. With unit weight below the 50kg recommended two-man safe lift limit, the units achieved the same aesthetic effect, but at considerably lower weight and could be lifted safely into position by a two man team.



Section details



Architects
Adam Architecture, London
 Telephone
020 7841 0140
www.adamarchitecture.com



“Precast arches recreate style of historic mansion.”

Bentley Priory, Stanmore, Middlesex

Famous as the headquarters of fighter command during the Second World War, and site of the war room where Winston Churchill, King George VI and US general Dwight D Eisenhower monitored D-day, the historic Bentley Priory Estate is being restored and redeveloped to include a gated development of 2, 3 and 4 bedroom dwellings by Barratt Homes.

BRICK

Leicester Multi Cream Stock & Heritage Red Blend



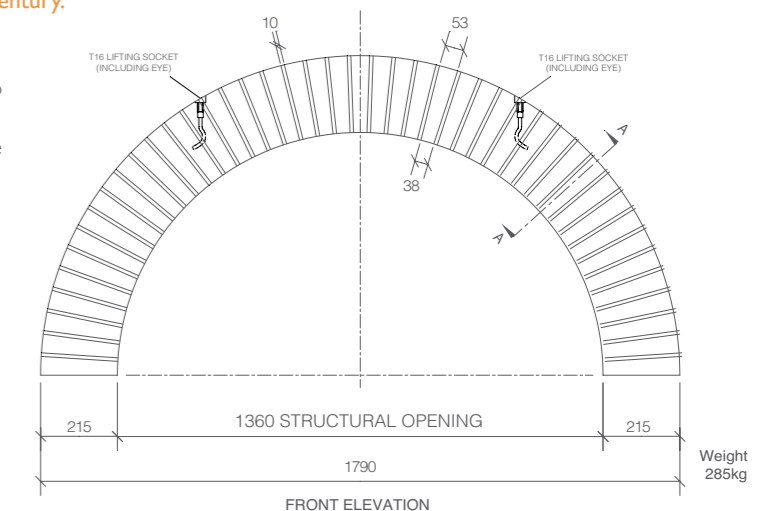
Surrounded by 12 acres of English parkland, the new homes, planned by Adam Architecture and detailed by Clague Architects, have been designed to reflect the style and grandeur of the Grade II listed mansion house, redesigned by Sir John Soane in the 19th Century.

The predominant feature of the mansion has been reflected in arched detailing to the brickwork façades, created using 1bstock Kevington precast arches. Segmented arches to a width of almost four metres and semi-circular 1360mm radius arches were faced in 1bstock Leicester Multi Cream Stock and Heritage Red Blend brick to exactly match the building finish, enabling the detail to be created accurately and quickly to the very high build standards demanded for this prestige project.

STRUCTURAL CONCRETE BACKED

A fully structural one piece arch system which omits the need for steel lintels. 25mm brickslips are epoxy resin bonded to the concrete backing units or alternatively a concrete backing is cast onto the rear face of the brick arch slips forming a natural mechanical key. Both systems are produced with stainless steel bearing plates for simple installation.

A fully fair faced soffit can be achieved as illustrated. Available to lengths of approx 4000mm.



JOIN A LONG LIST OF
WINNING PRACTICES

enter
your
project now

One of the longest established and most widely respected design awards in the UK, the annual Brick Awards recognise excellence in design, aesthetics and construction using brick.

Anyone involved with the industry can enter – the only restriction is that the bricks or pavers used in your project must have been supplied by a BDA member company.

Entry is free and all you have to do is submit good quality photographs, drawings and a 500 word description – full details and an entry form can be found at www.brick.org.uk/2014-entry-form.

Each year, the awards attract hundreds of entries, all vying to win one of 16 prestigious trophies, including the Architects Choice Award, the BDA Chairman's Award and the BDA Supreme Award. More than 150 Certificates are also awarded to projects that make it into the final selection.



ENTRIES CAN BE MADE IN EACH OF THE FOLLOWING CATEGORIES:

BEST HOUSING DEVELOPMENT – 1 TO 5 UNITS

BEST HOUSING DEVELOPMENT – 6 TO 25 UNITS

BEST HOUSING DEVELOPMENT – 26 UNITS OR MORE

VOLUME HOUSEBUILDING AWARD

BEST COMMERCIAL BUILDING

BEST PUBLIC BUILDING

BEST REFURBISHMENT & RENOVATION PROJECT

BEST OUTDOOR SPACE

INNOVATIVE USE OF BRICK AND CLAY PRODUCTS

BEST INTERNATIONAL PROJECT

SPECIALIST BRICKWORK CONTRACTOR OF THE YEAR

BEST OUTDOOR SPACE

BEST CRAFTSMANSHIP AWARD

WORLDWIDE BRICK AWARD

BRICK AWARDS 2013

lbstock again proves it's the first choice for great design with more Award Winning projects than any other brickmaker!



Archbishop McGrath School, South Wales

Architect: HLM Cardiff **Product:** lbstock Staffordshire Slate Blue Smooth

SPECIALIST BRICKWORK CONTRACTOR OF THE YEAR – REUSSIR

WINNER



Hargood Close, Essex

Architect: Proctor and Matthews **Product:** Ibstock Parham Red Stock & Special Black

BEST HOUSING DEVELOPMENT – 6 TO 25 UNITS

WINNER



Trinity Village

Arundel Yellow Multi Stock

VOLUME HOUSEBUILDING AWARD – BARRATT HOMES



Waterside Blocks D, E & F

Bradgate Harvest Antique & Bradgate Light Buff



East Wichel

New Sandhurst Stock

WINNER



Long Farm, Suffolk

Architect: Lucy Marston **Product:** Ibstock Chailey Rustic Stock

BEST HOUSING DEVELOPMENT – 1 TO 5 UNITS

WINNER



Royal Road, London

Architect: Panter Hudspith Architects **Product:** Ibstock Ivanhoe Cream & Ivanhoe Athena Blend

BEST HOUSING DEVELOPMENT – 26 UNITS OR MORE

WINNER



Phoenix Care Centre, Dublin

Architect: Moloney O'Beirne Architects **Product:** Istock Grange Gorman Blend

BEST INTERNATIONAL PROJECT

WINNER

Alwyne Place, London

Architect: Lipton Plant Architects **Product:** Istock Staffordshire Slate Blue Smooth

BEST REFURBISHMENT & RENOVATION PROJECT **WINNER**

Ditchingham Passivhaus

Architect: Parsons + Whittlely **Product:** Istock West Hoathly Nutley Brown

BEST HOUSING DEVELOPMENT - 6 TO 25 UNITS **HIGHLY COMMENDED**

Peckham Mosque

Architect: Benedict O'Looney Architects **Product:** Swanage Restoration Red

BEST REFURBISHMENT AND RENOVATION **HIGHLY COMMENDED**

St Andrews Phase 4

Architect: Allies & Morrison **Product:** Capital Brown Multi Stock & Petworth Multi Stock

BEST HOUSING DEVELOPMENT - 26 UNITS OR MORE **HIGHLY COMMENDED**

Back to basics

UNDERSLUNG™ BRICK FACED SOFFITS

Deep reveals and soffits are increasingly popular design features that add an extra depth and dimension to masonry façades. The growing trend today is to continue the surrounding brickwork bond over the openings to maintain an exposed brick soffit, seemingly unsupported by exposed steelwork.

Until recently, creating such a feature would have been a complex, costly and time-consuming process involving the drilling of bricks and threading of metal rods for support. This process is loathed by the trades and produces a sometimes inconsistent finish. With new Underslung™ systems from Ibstock, this is no longer the case.

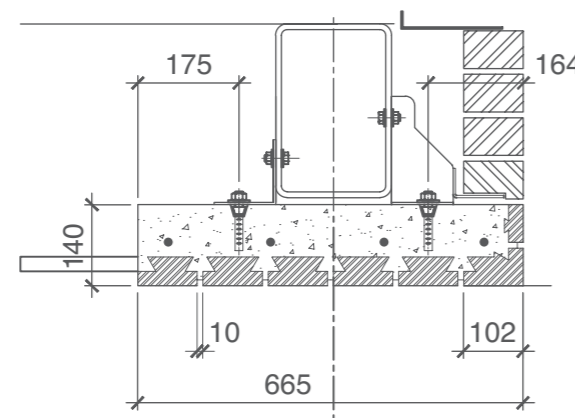
Soffit units, typically 890mm (4 bricks) long, but longer or shorter to suit requirements, are created by casting reinforced concrete on the back of keyed bricks, specially prepared from standard bricks cut back to create a positive 'butterfly-shaped' key for permanent bonding. The concrete is stopped back from the face of the brickwork to allow for site mortar:

A steel channel is set along the top of the casting, complete with T-bolts to connect with slotted holes in shelf angles fixed to the face of the concrete structure. Two lifting-eye sockets are set alongside the dovetail channel to facilitate lifting and positioning of the homogenous units.

The precast units are then lifted into place below the shelf angles and finely adjusted to align along the face of the building prior to tightening of the bolts. Pistol bricks are then laid on top of the shelf angle to obscure the supports and provide continuity with the facia brickwork.

Bricks used for the units are usually taken from the same batch as those sent to the site, ensuring uniformity of appearance.

Units prepared in this way are ideal for long or unusually shaped openings where there is restricted access or little or no bearing surface.

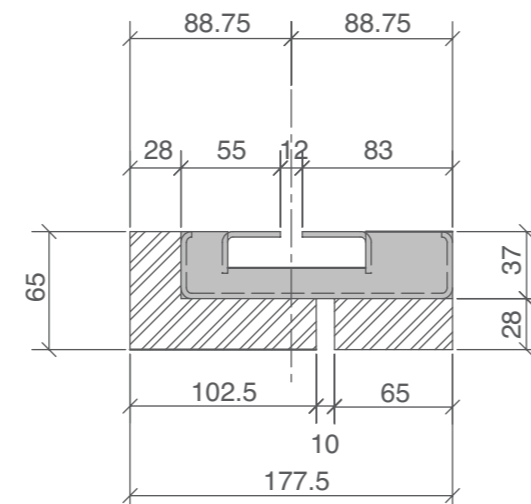


TYPICAL SECTION THROUGH BEAM WITH UNDERSLUNG™ UNIT

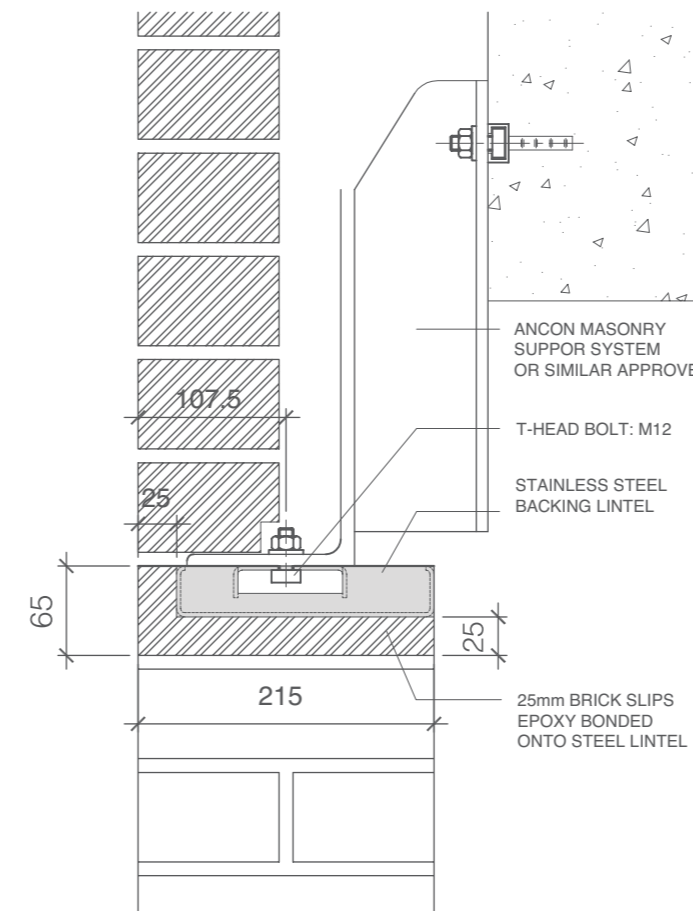
LIGHTWEIGHT UNITS IN STAINLESS STEEL BOX SECTION

In addition to the existing precast Underslung™ system, Ibstock Kevington have now added a new Stainless steel Underslung™ option to the range.

This system offers all the benefits of the existing precast Underslung™ but adds lighter weight, enabling improved site handling while maintaining the same high quality, high performance product.



TYPICAL SECTION

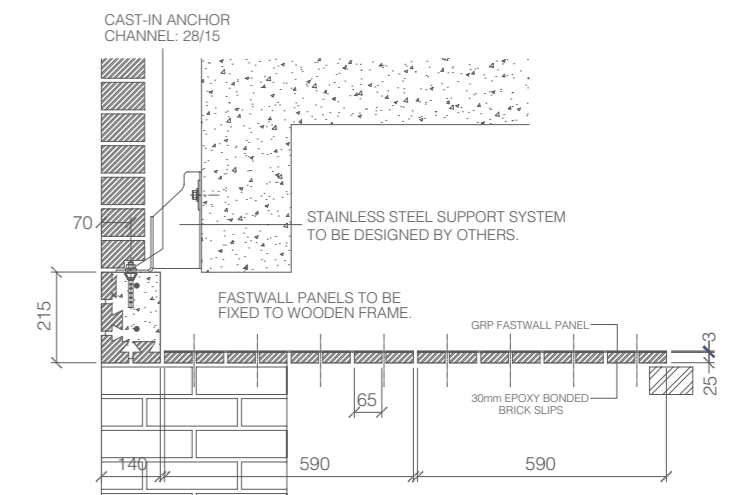


TYPICAL SECTION

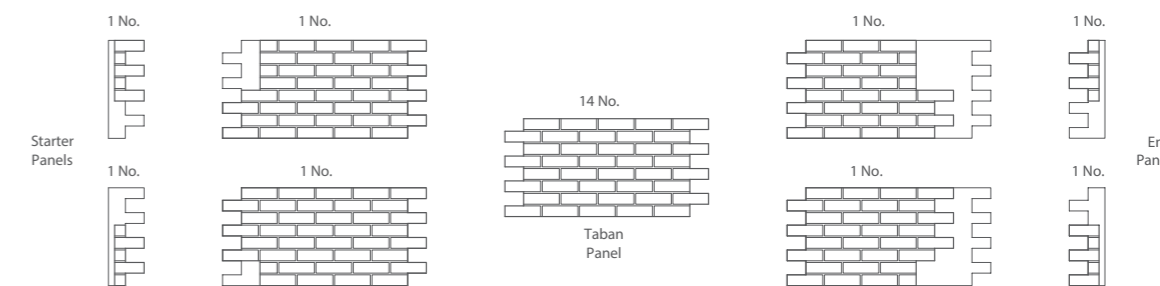
FASTWALL™ SOFFITS

Where deeper brickwork soffit areas are required, Fastwall™ offers the perfect solution.

Often used in conjunction with precast Underslung™ to give a continuous wrap-around effect, Fastwall™ allows large areas of soffit to be clad quickly and efficiently giving a beautiful brick finish.



TYPICAL SECTION



DETAILS OF GRP FASTWALL™ PANELS

GREAT VALUE,
GREAT QUALITY,
GREAT SERVICE.

Ibstock Brick Limited
Ibstock, Leicestershire, LE67 6HS
t: 01530 261999
f: 01530 257457

e: enquiries@ibstock.co.uk

Ibstock Sales Office:
0844 800 4575

Design & Technical Helpline:
0844 800 4576

Sample & Literature Hotline:
0844 800 4578

Special Shapes and Brickwork
Components Sales Office:
0844 736 0350



Published by:
Ibstock Brick Ltd.,
Ibstock, Leicestershire, LE67 6HS

Editor: Paul Smith

Important information about CE MARKING

From 1st July 2013 it is mandatory for any construction product, covered by a harmonised European Standard (hEN) containing a 'ZA' annexe, to carry a Declaration of Performance (DoP) and a CE mark.

Standard format clay brick and pavers have been covered by hENs since 2003 and Ibstock bricks have been CE marking since then.

Although bespoke and 'one off' special products will not fall under the scope of the hEN and require CE marking, Special Shaped bricks generally will and must carry the CE marking.

Further information and Declarations of Performance can be found at: www.ibstock-ce.com



think BRICK
A BRICK DEVELOPMENT ASSOCIATION INITIATIVE

To find out more scan this using your smartphone.

For fast and easy access to the comprehensive range of Ibstock products and services visit www.ibstock.com

© Ibstock Brick Limited 2014
IBSTOCK IS A CRH COMPANY

NEXT TIME IN

design...

IBSTOCK GLAZED BRICK

Now in a virtually unlimited choice of colours, sizes and finishes to bring an extra dimension to your project.

SIGN UP FOR THE NEXT ISSUE

e-mail design@ibstock.co.uk

