

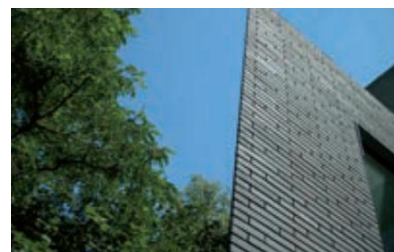
# APPLICATION & CONSTRUCTION

## LINEAR HANDLING & LAYING GUIDELINES

For many years the 'standard' UK brick size has been 215mm x 102mm x 65mm give or take a few imperial variants.

At Ibstock we have developed a range of new size formats to help architects and designers create different and exciting aesthetics utilising the sustainable features of clay brick.

Ibstock's Linear range of products are long, slim bricks available in a variety of colours and textures.



### HANDLING

Units will need extra care when handling and storing. Do not stack packs and preferably unload by fork lift. Other types of 'grab' unloading may damage bricks in the pack. Keep units protected from the elements until used.

### MORTAR SPECIFICATION

Units should be laid in a mix no stronger than necessary. Generally a designation (iii) in normal elevations and a designation (ii) in exposed situations.

Use full mortar beds and a nominal 10mm joint thickness, however some products in the Linear range can incorporate reduced width bed joints if desired - please contact an Ibstock

Design Advisor.

Perpends should be fully filled with mortar in all situations.

To highlight the size and shape of the products it is suggested that a contrasting mortar colour be specified.

### MOVEMENT JOINTS

At normal recommended spacing for clay units, please contact an Ibstock Design Advisor. Where bed-joint reinforcement is used, joint spacing may be increased from the normal industry guidelines for un-reinforced walls.

### WALL TIE SPACING

At normal centres as per PD 6697. For stack bonding 225mm vertically and 600mm horizontally.

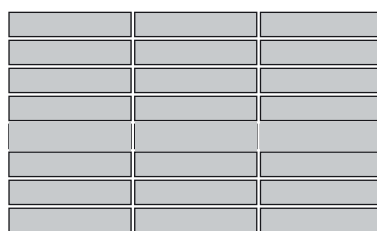
When using Linear, the minimum height option is 50mm. This may mean the bricks will not course with the block-work inner leaf. This can be easily remedied by specifying a helical type of wall tie which can be fixed to the block at the height dictated by the external courses.

### BRICK DIMENSIONS TABLES

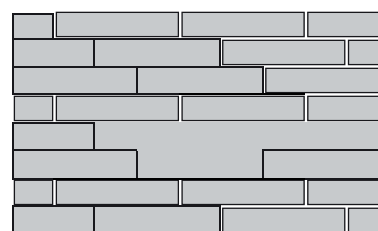
Dimensions tables are available incorporating many of the sizes featured in our Linear range and can be found in the Technical Support pages on our website.

### BONDS

As well as stretcher bond and stack bond, 327mm units can also be laid one-third bond giving a staggered effect to the perpends.



Stack Bond



Third Bond

Dependant on the length of units there is likely to be a slight bow along the bed of the unit due to the nature of materials and manufacture. Compressive strength and performance in service remain unaffected.

Although the instructions contained in this publication and any other information published by Ibstock Brick Ltd are believed to be accurate at the date of publication, they are strictly for guidance only and Ibstock Brick Ltd accepts no liability in relation to their use or for any losses, howsoever caused. You are responsible for taking all reasonable steps to ensure your use of the product conforms to all applicable health and safety requirements from time to time. If in doubt, please consult appropriately qualified persons. All products sold by Ibstock are sold subject to Ibstock's Terms and Conditions of Sale, a copy of which is available on request.