

NOTES:

Stepoc 325 will accommodate a single or double layer of reinforcement and is laid in half bond. The first course is mortar bedded to ensure it is completely level.

Please ensure all calculations are carried out using the correct values for the position of the reinforcement and in accordance with the relevant design standard.

Corner and End Details should be constructed first and any cut blocks incorporated towards the center of the walling section.

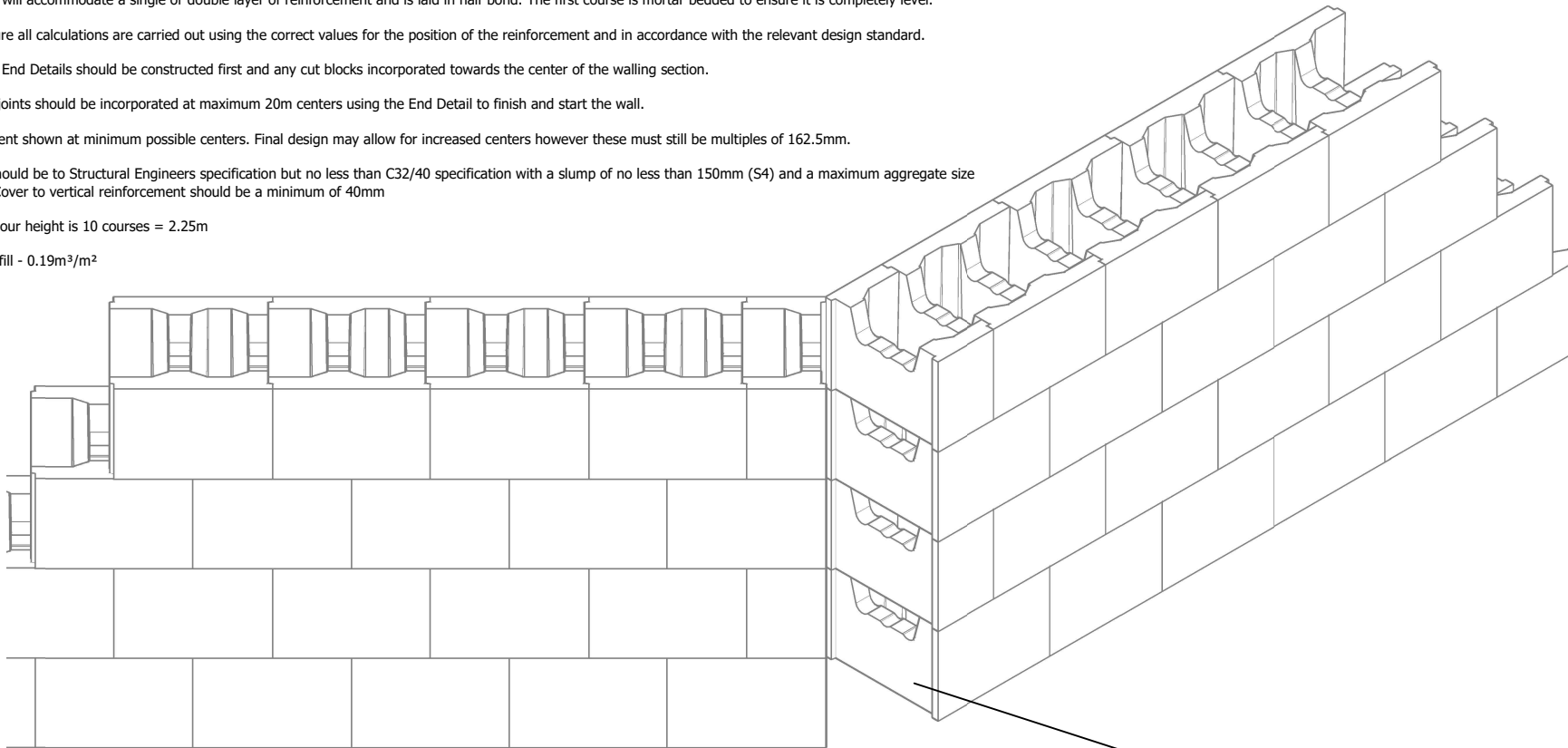
Movement joints should be incorporated at maximum 20m centers using the End Detail to finish and start the wall.

Reinforcement shown at minimum possible centers. Final design may allow for increased centers however these must still be multiples of 162.5mm.

Concrete should be to Structural Engineers specification but no less than C32/40 specification with a slump of no less than 150mm (S4) and a maximum aggregate size of 10mm. Cover to vertical reinforcement should be a minimum of 40mm

Maximum pour height is 10 courses = 2.25m

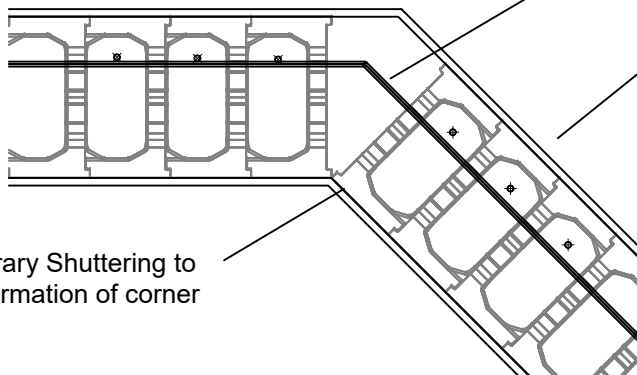
Concrete infill - 0.19m³/m²




Horizontal Reinforcement continuous around corner, subject to Structural Engineer's design

Open jaws of Full Length Standard Unit (V2) facing junction to allow for poured concrete to achieve maximum bond.

Temporary Shuttering to allow formation of corner



Temporary Shuttering to allow formation of corner

Project 325mm Stepoc - Standard Details			 Anderton
Title NON 90° CORNER DETAIL			
Drawing Number	ST - 325 - NON90	Rev	Units 1 & 2, Cosgrove Business Park Soot Hill, Anderton Northwich Cheshire CW9 6AA Tel: 0333 234 3434 www.andertonconcrete.co.uk
Drawn By	TJF	Date	22.05.2019
Scale	NTS		Anderton Concrete Ltd. 2019 ©
Approved By	Date	Drawing is supplied by Anderton Concrete Ltd and must not be reproduced or shown to others without prior written consent.	