



WE ARE
Retaining Walls and more.



Ibstock
At the heart of building

STEP UP

AND MAXIMISE YOUR LAND USE

WITH STEPOC

RETAINING WALL SOLUTIONS

THE FLEXIBLE, COST
EFFECTIVE ALTERNATIVE TO
FORMWORK AND
TRADITIONAL BLOCKWORK.

Watch our
installation video



WHAT IS STEPOC?

- **STEPOC** is a **dry laid** retaining wall system
- It is used to **maximise sloping sites**
- **Multiple** uses including **retaining walls, basement walls** and **swimming pools**
- Enables **fast construction** of single skin retaining walls up to **3.8 metres high***
- **UK manufactured.**

JUST SOME OF THE BENEFITS TO YOU INCLUDE:

- Save time, stress and money - **up to 30% cheaper** than conventional shuttering
- **Easy to use**
- **Quick to install**
- Requires **no skilled labour** to install
- **Less than 20kg per unit** meaning it requires only a single person lift.

**FOR MORE INFORMATION,
ASK IN STORE TODAY.**

*subject to design carried out by a structural engineer.

STEPOC SPECIFICATION

COMPOSITION AND MANUFACTURE

STEPOC blocks are manufactured to BS EN 15435 2008 using aggregates which satisfy BS EN12620 and cement to BS EN197-1.

DIMENSIONS

STEPOC blocks are available in three standard sizes:

400x200x225mm	11.11 blocks per m ²
400x256x225mm	11.11 blocks per m ²
325x325x225mm	13.67 blocks per m ²

TYPICAL UNIT WEIGHTS

(Applies to standard units)

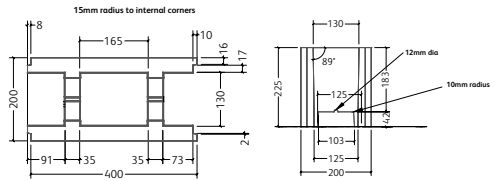
200mm = 17.5kg
256mm = 19.8kg
325mm = 19.4kg

DELIVERY AND OFFLOADING

STEPOC blocks are supplied on pallets for offloading by forklift truck or crane. Blocks should be stored on dry, firm, level ground with protection from rain and snow. If blocks are accidentally wetted, provision should be made for free circulation of air round the stack so that the units may dry out prior to being used.



TYPE 200



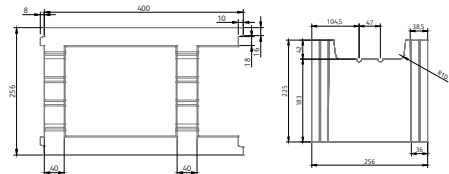
400 x 200 x 225mm standard

200 x 200 x 225mm 1/2 length

L2 - Full Length Standard
L4 - Half Length Plain End

L3 - Full Length Plain End

TYPE 256



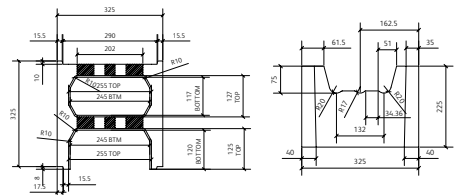
400 x 256 x 225mm standard

133 x 256 x 255 1/3 length

V2 - Full Length Standard
V5 - Third Length Standard

V3 - Full Length Plain End
V6 - Third Length Plain End

TYPE 325



325 x 325 x 225mm standard

162 x 325 x 225mm 1/2 length

Z2 - Full Length Standard
Z4 - Third Length Standard

Z3 - Full Length Plain End