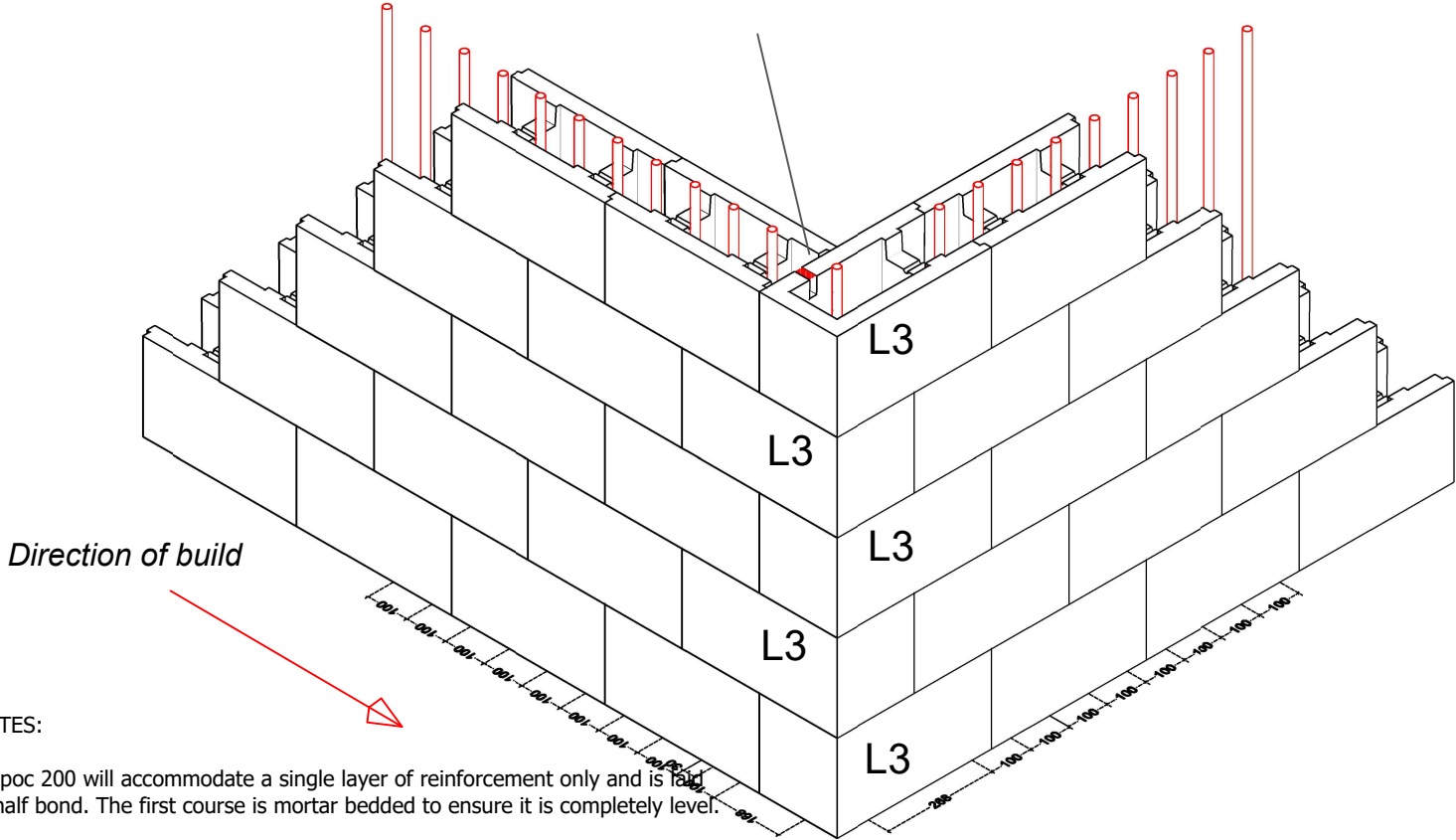




The corner pieces have a notch cut out of the side and end walls on site, as shown here This is to allow the horizontal reinforcement to continue around the corner



NOTES:

Stepoc 200 will accommodate a single layer of reinforcement only and is laid in half bond. The first course is mortar bedded to ensure it is completely level.

Please ensure all calculations are carried out using the correct values for the position of the reinforcement and in accordance with the relevant design standard.

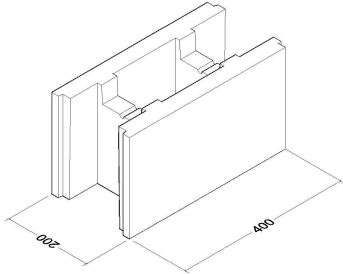
Corner and End Details should be constructed first and any cut blocks incorporated towards the centre of the walling section.

Movement joints should be incorporated at maximum 20m centers using the End Detail to finish and start the wall.

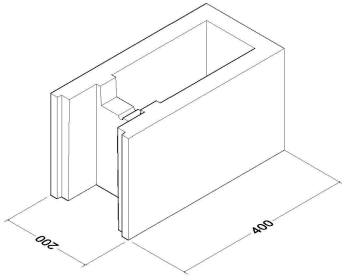
Concrete should be to Structural Engineers specification but no less than C32/40 specification with a slump of no less than 150mm (S4) and a maximum aggregate size of 10mm. Cover to vertical reinforcement should be a minimum of 40mm

Maximum pour height - 8 courses (1.8m)

Concrete infill - 0.12m<sup>3</sup>/m<sup>2</sup>




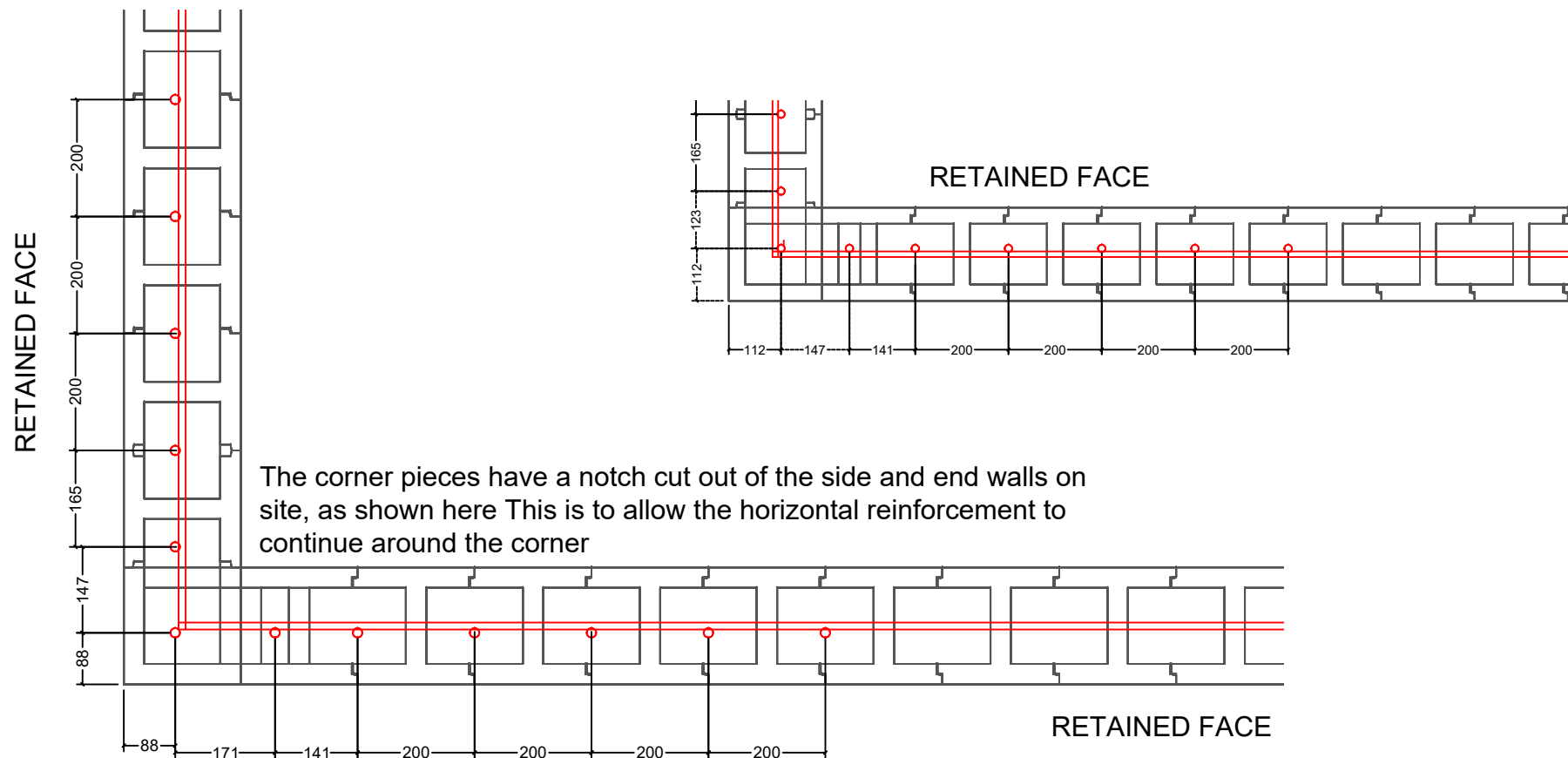
Full Length Standard Blocks (L2)



Full Length Plain Blocks (L3)


Blocks are taken to be Full Length Standard Blocks (L2) unless otherwise marked

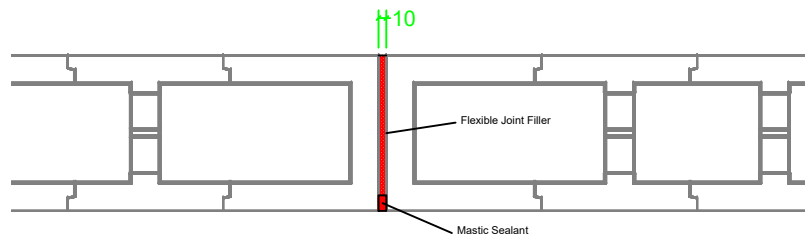
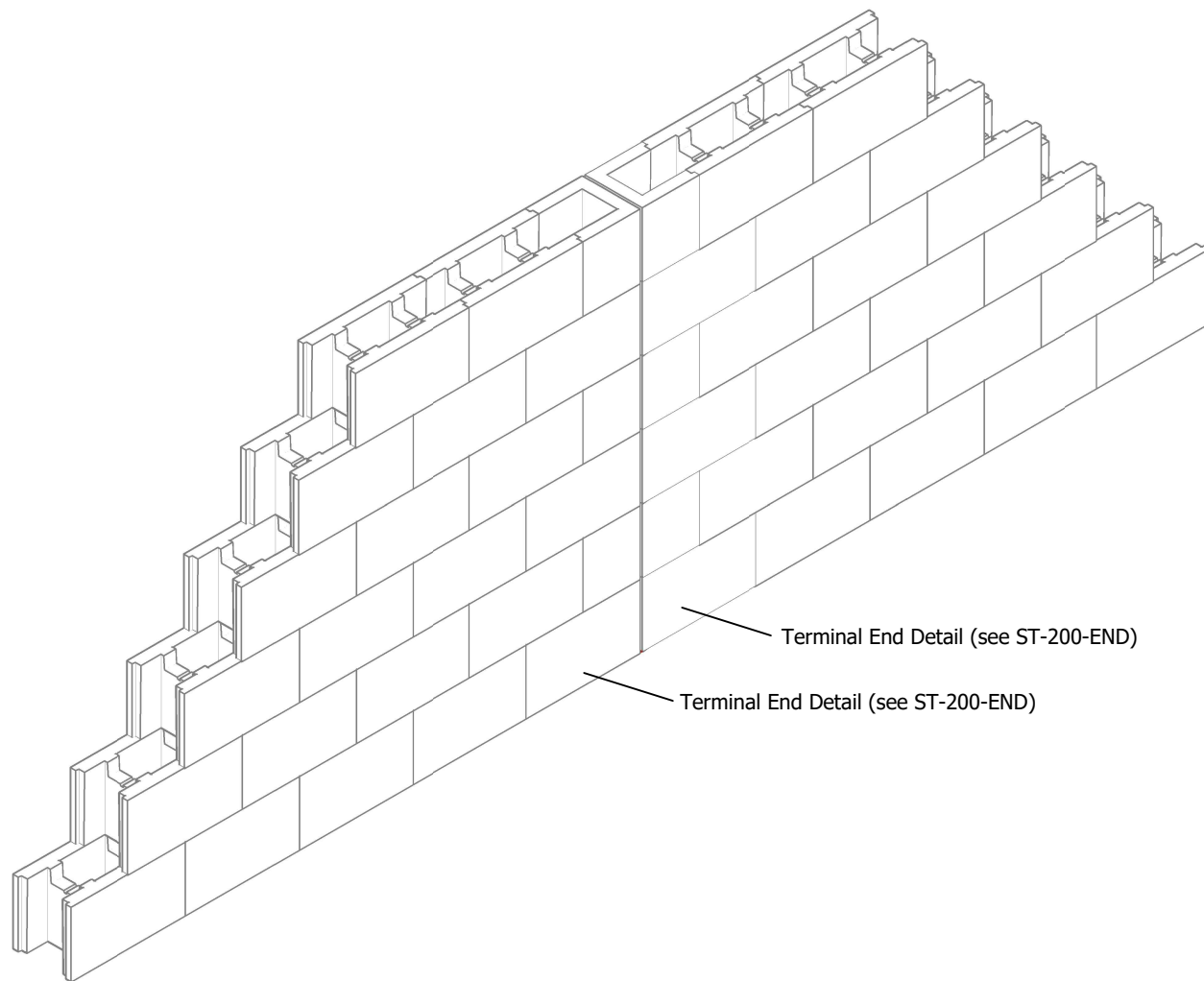
Project 200mm Stepoc - Standard Details			 <b>Anderton</b>  Units 1 & 2, Cosgrove Business Park Soot Hill, Anderton Northwich Cheshire CW9 6AA Tel: 0333 234 3434 www.andertonconcrete.co.uk <b>Anderton Concrete Ltd. 2019 ©</b>
Title ISOMETRIC SHOWING 200MM STEPOC 90° CORNER			
Part Number ST-200-CRN		Rev E	
Drawn By TJF	Date 21.05.2019	Scale 1:10	
Approved By	Date	Drawing is supplied by Anderton Concrete Ltd and must not be reproduced or shown to others without prior written consent.	



(Based on 12mm horizontal & vertical reinforcing bars)

Consideration should be given to the avoidance of creep when setting out the vertical reinforcing bars

Project 200mm Stepoc - Standard Details		<div><div>Anderton</div></div>	
Title ISOMETRIC SHOWING 200MM STEPOC REBAR SPACING			
Part Number	ST-200-REBAR	Rev	C
Drawn By TJF	Date 01.11.18	Scale 1:10	Units 1 & 2, Cosgrove Business Park Soot Hill, Anderton Northwich Cheshire CW9 6AA Tel: 0333 234 3434 www.andertonconcrete.co.uk
Approved By	Date	Drawing is supplied by Anderton Concrete Ltd and must not be reproduced or shown to others without prior written consent.	



#### NOTES:

Stepoc 200 will accommodate a single layer of reinforcement only and is laid in half bond. The first course is mortar bedded to ensure it is completely level.

Please ensure all calculations are carried out using the correct values for the position of the reinforcement and in accordance with the relevant design standard.


Corner and End Details should be constructed first and any cut blocks incorporated towards the center of the walling section.

Movement joints should be incorporated at maximum 20m centers using the End Detail to finish and start the wall. Final decision should lie with the Structural Engineer

Reinforcement shown at minimum possible centers. Final design may allow for increased centers however these must still be multiples of 200mm.

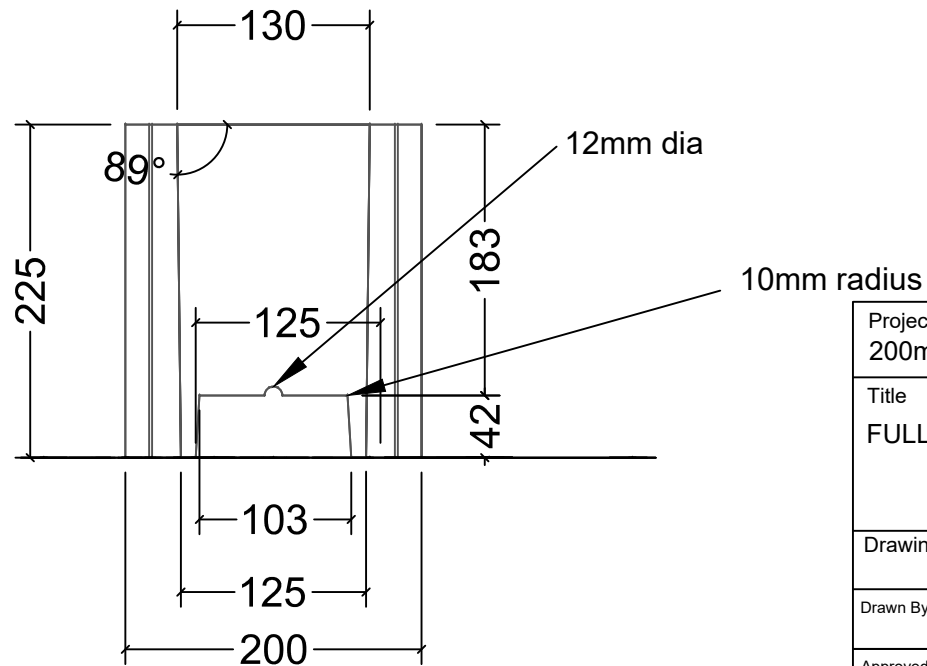
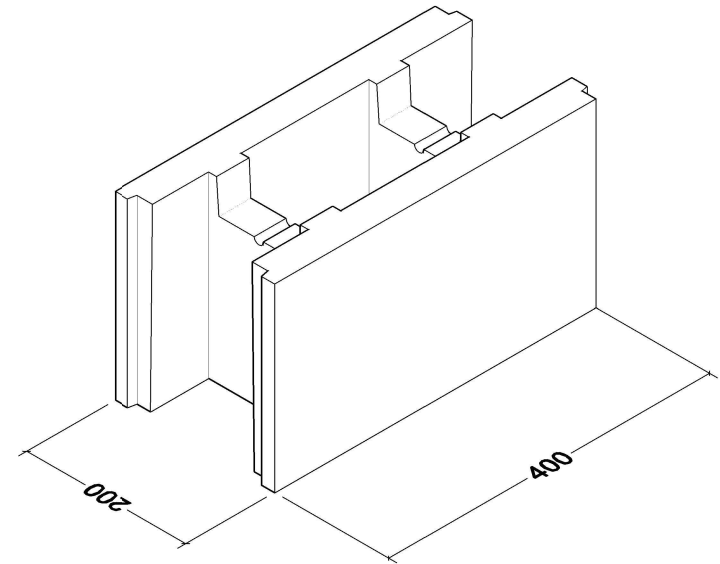
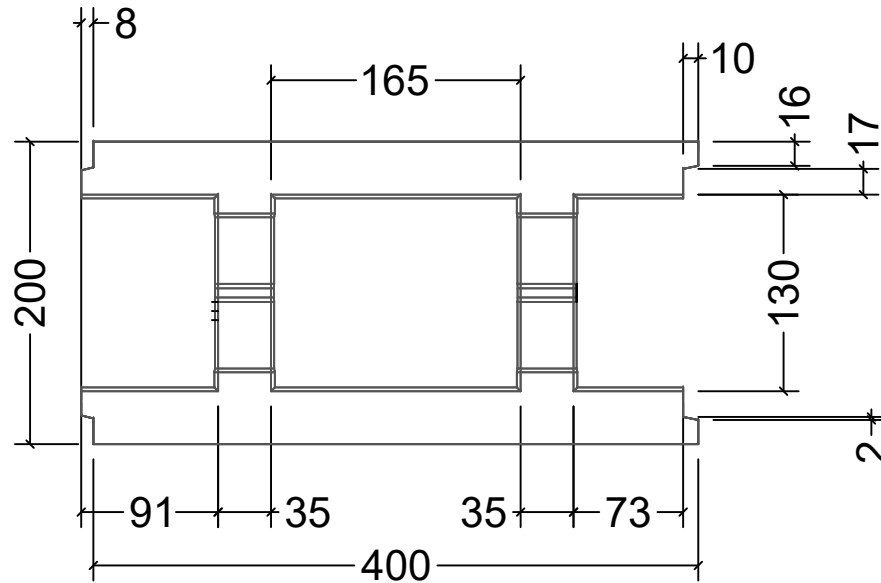
Concrete should be to Structural Engineers specification but no less than a C32/40 specification with a slump of no less than 150mm (S4) and a maximum aggregate size of 10mm. Cover to vertical reinforcement should always be minimum 40mm.


Concrete infill -  $0.12\text{m}^3/\text{m}^2$

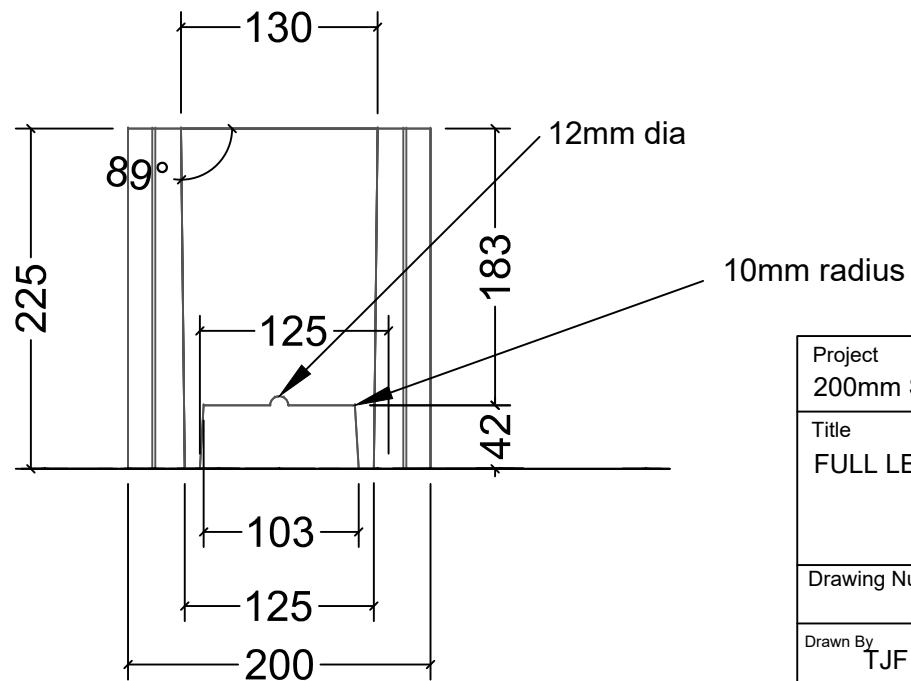
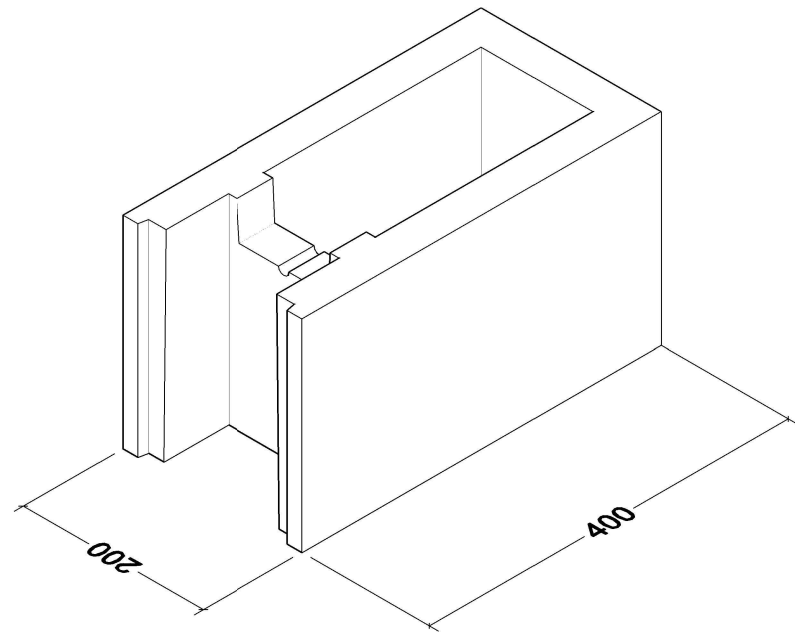
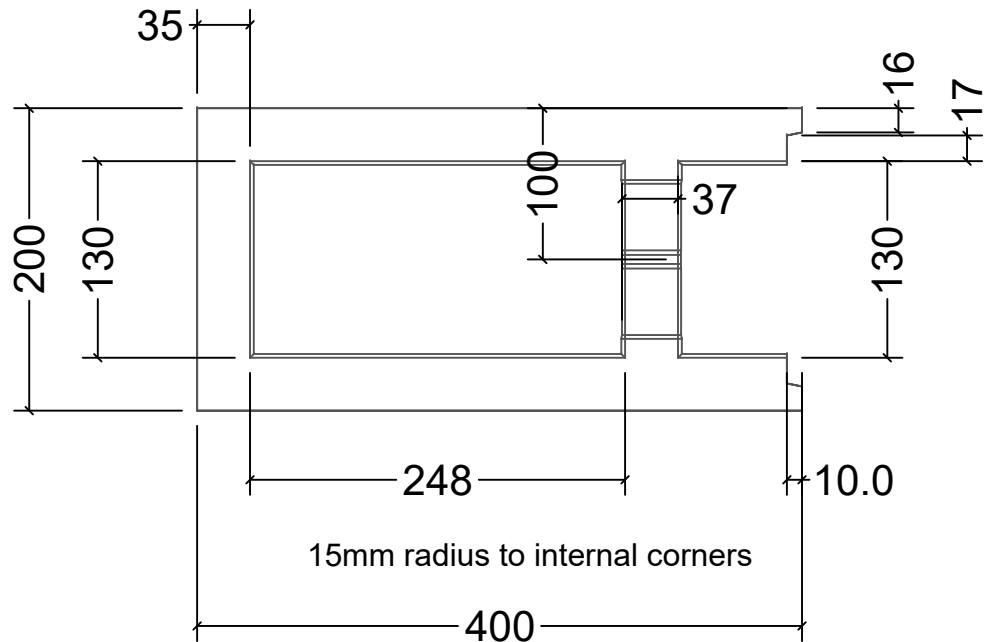
Project 200mm Stepoc - Standard Details			<div><b>Anderton</b></div> <div>Units 1 &amp; 2, Cosgrove Business Park Soot Hill, Anderton Northwich Cheshire CW9 6AA Tel: 0333 234 3434 <a href="http://www.andertonconcrete.co.uk">www.andertonconcrete.co.uk</a></div>
Title Movement Joint Detail			
Part Number ST-200-MJ		Rev C	<div>Anderton Concrete Ltd. 2019 ©</div>
Drawn By TJF	Date 21.05.2019	Scale NTS	
Approved By	Date	Drawing is supplied by Anderton Concrete Ltd and must not be reproduced or shown to others without prior written consent.	


Anderton Concrete Ltd. 2019 ©

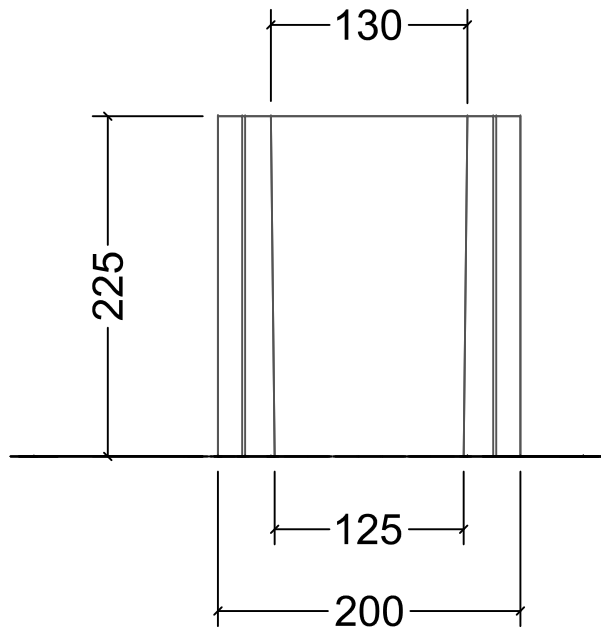
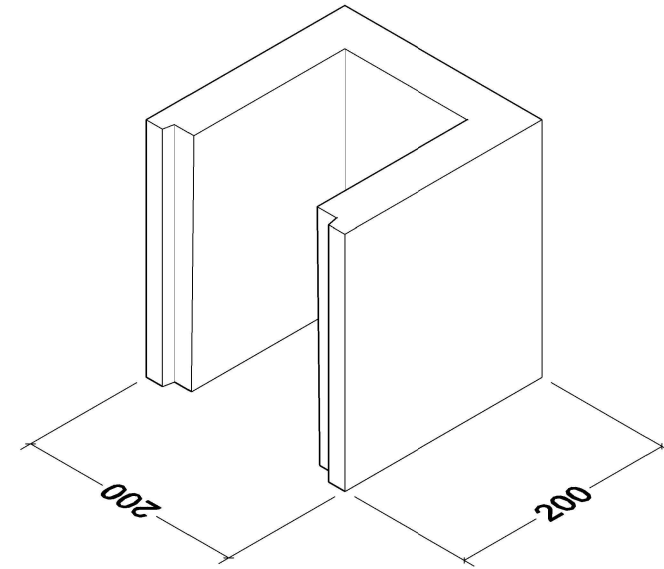
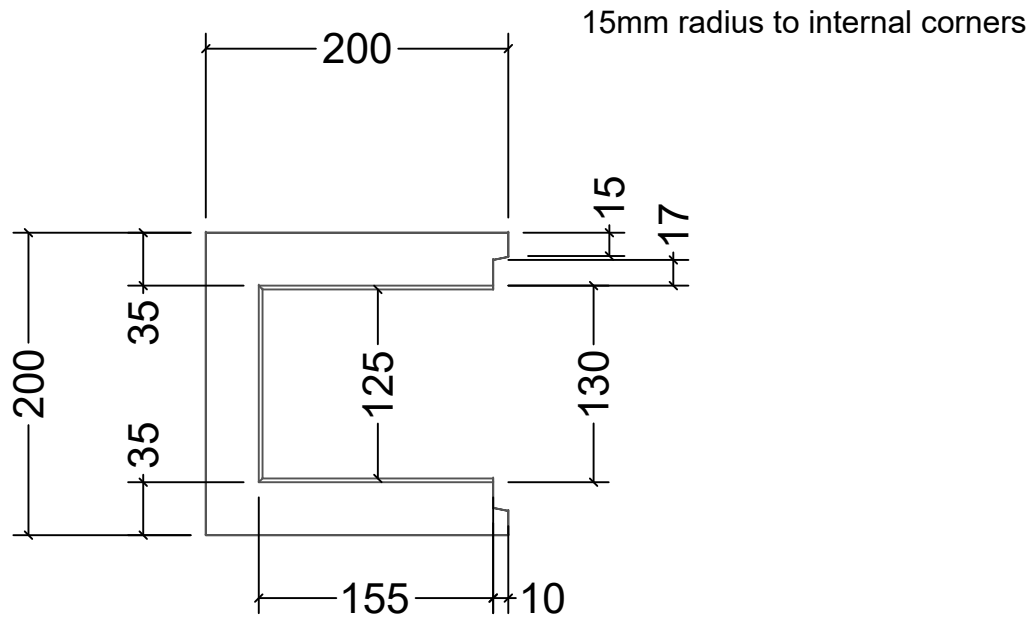
15mm radius to internal corners




Project 200mm Stepoc - Standard Details			 <b>Anderton</b>	
Title FULL LENGTH STANDARD (L2)				
Drawing Number ST-200-L2		Rev	Units 1 & 2, Cosgrove Business Park Soot Hill, Anderton Northwich Cheshire CW9 6AA Tel: 0333 234 3434 www.andertonconcrete.co.uk  Anderton Concrete Ltd. 2019 ©	
Drawn By TJF	Date 24.01.2019	Scale 1:10		
Approved By	Date	Drawing is supplied by Anderton Concrete Ltd and must not be reproduced or shown to others without prior written consent.		



Project 200mm Stepoc - Standard Details			 <b>Anderton</b>
Title FULL LENGTH PLAIN (L3)			
Drawing Number ST-200-L3		Rev	Units 1 & 2, Cosgrove Business Park Soot Hill, Anderton Northwich Cheshire CW9 6AA Tel: 0333 234 3434 www.andertonconcrete.co.uk
Drawn By TJF	Date 24.01.2019	Scale 1:10	
Approved By	Date	Drawing is supplied by Anderton Concrete Ltd and must not be reproduced or shown to others without prior written consent.	



Project 200mm Stepoc - Standard Details		 <b>Anderton</b>	
Title HALF LENGTH PLAIN (L4)			
Drawing Number ST-200-L4		Rev	
Drawn By TJF	Date 24.01.2019	Scale 1:10	Units 1 & 2, Cosgrove Business Park Soot Hill, Anderton Northwich Cheshire CW9 6AA Tel: 0333 234 3434 <a href="http://www.andertonconcrete.co.uk">www.andertonconcrete.co.uk</a>
Approved By	Date	Anderton Concrete Ltd. 2019 © Drawing is supplied by Anderton Concrete Ltd and must not be reproduced or shown to others without prior written consent.	