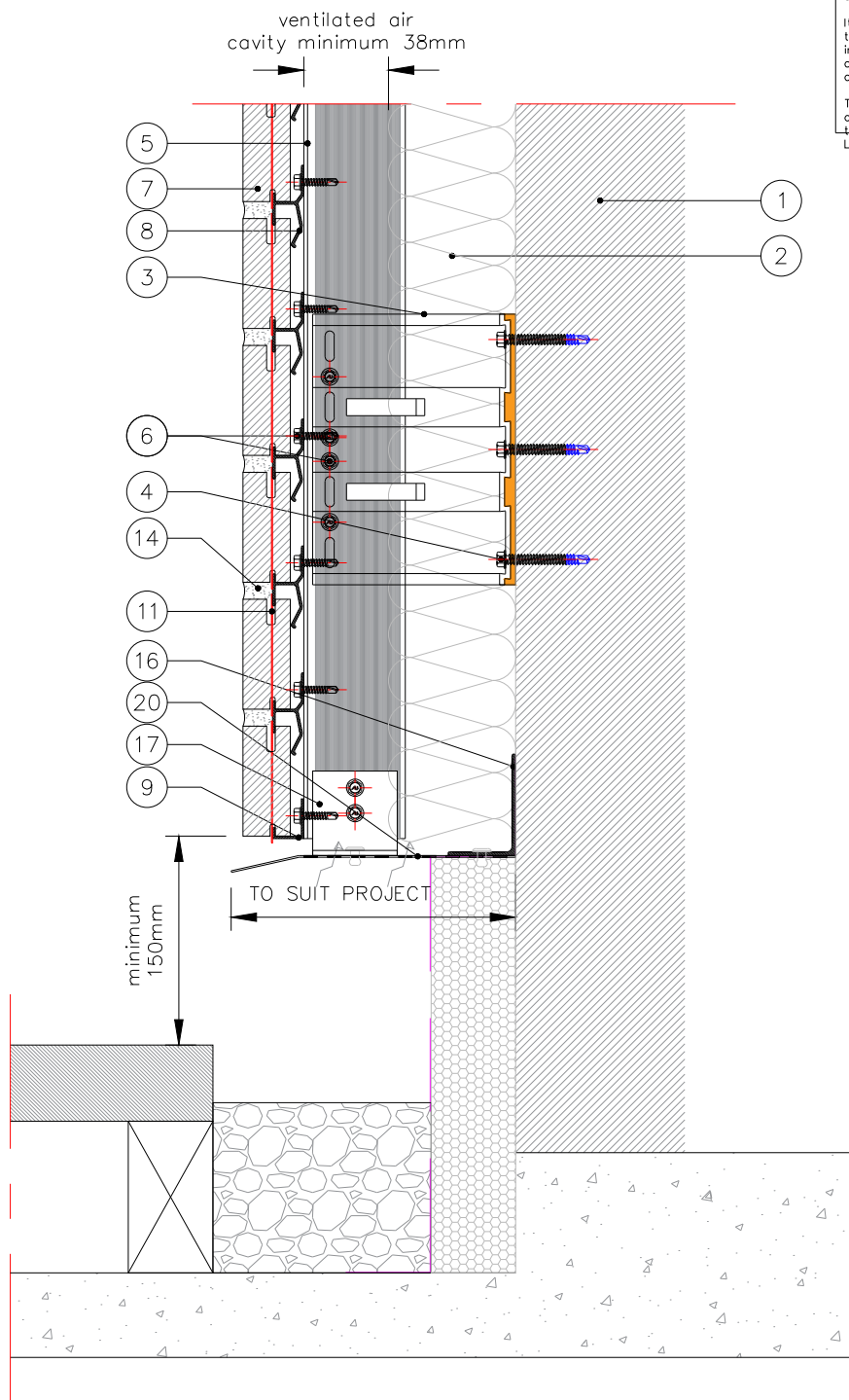


**General Notes:**

Do not scale this drawing – If in doubt contact the Technical Office.

It is the customers responsibility to ensure that Ash & Lacy products are correctly installed and that they are suitable for the customers particular requirement and application.

This drawing is copyright, reproduction or duplication of this drawing without the consent of Ash & Lacy is prohibited.



- |   |                                    |                               |   |
|---|------------------------------------|-------------------------------|---|
| 1. Substrate (by others)                        | 7. Rail Fixing                     | Adaptor                       | 21. Vent Brick Slip                           |
| 2. Insulation (by others)                       | 8. Mechslip Brick Slip             | 14. Mortar Joint              | 22. Aluminum Slip (for external load fixing ) |
| 3. Bracket                                      | 9. Intermediate Rail               | 15. Sealant on back-up filler | 23. Coping to suit project                    |
| 4. Bracket/Wall Fixing (Depending on Substrate) | 10. Starter Rail                   | 16. Aluminium Angle           | 24. Damp Proof Course                         |
| 5. Mullion                                      | 11. Mechslip Brick Spacer          | 17. Cleat (to be site cut)    | 25. Cavity Tray                               |
| 6. Support System/ Brick                        | 12. Mechslip Brick Spacer – Curved | 18. 'F' Trim Support          | 26. Stainless Steel Bracket                   |
|   | 13. Horizontal Bracket             | 19. Window Flashing           | 27. Stainless Steel Mullion                   |
|   |                                    | 20. Ventilated Section        | 28. Stainless Steel Bracket/Mullion Fixing    |

Note: All fixings, insulation and membranes indicated are for guidance only and are to be confirmed on site.

**MECHSLIP**  
CONFIDENCE. BUILT IN.

Website - [www.mechslip.co.uk](http://www.mechslip.co.uk)  
Email - [enquiries@mechslip.co.uk](mailto:enquiries@mechslip.co.uk)

**ASH & LACY**  
[WWW.ASHANDLACY.COM](http://WWW.ASHANDLACY.COM)

**Ibstock Brick**  
[WWW.IBSTOCKBRICK.CO.UK](http://WWW.IBSTOCKBRICK.CO.UK)

Rev	Description	Drawn	Check	Date
A				
B				
C				

Drawing Title : Base Detail Brick Above Ground		
Drawn By: EJ	Checked By: YT	Date : 28/06/2021
Scale : NTS @ A4		

Drawing Status: <b>Information</b>	
Client :	
Project : Mechslip Typical Details	
Drawing No : TD.MS.H1.G-08.00	Rev: [-]