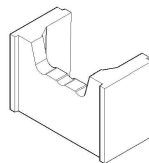
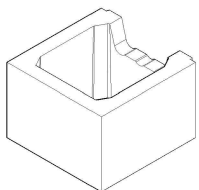


This is the Standard Full Length Stepoc block (Z2)
It has a face size of 325mm x 225mm



This is the Standard Half Length Stepoc block (Z4)
It has a face size of 162mm x 225mm



This is a Full Length Plain End Block (Z3)
It has a face size of 325mm x 225mm

Blocks are taken to be Full Length Standard Blocks (Z2) unless otherwise marked

NOTES:

Stepoc 325 will accommodate a single or double layer of reinforcement and is laid in half bond. The first course is mortar bedded to ensure it is completely level.

Please ensure all calculations are carried out using the correct values for the position of the reinforcement and in accordance with the relevant design standard.

Corner and End Details should be constructed first and any cut blocks incorporated towards the center of the walling section.


Movement joints should be incorporated at maximum 20m centers using the End Detail to finish and start the wall.

Reinforcement shown at minimum possible centers. Final design may allow for increased centers however these must still be multiples of 162.5mm.

Concrete should be to Structural Engineers specification but no less than C32/40 specification with a slump of no less than 150mm (S4) and a maximum aggregate size of 10mm. Cover to vertical reinforcement should be a minimum of 40mm

Maximum pour height is 10 courses = 2.25m

Concrete infill - 0.19m³/m²

Project 325mm Stepoc - Standard Details			
Title TERMINAL END DETAIL			
Drawing Number ST - 325 - END		Rev E	
Units 1 & 2, Cosgrove Business Park Soot Hill, Anderton Northwich Cheshire CW9 6AA Tel: 0333 234 3434 www.andertonconcrete.co.uk	Drawn By TJF	Date 22.05.2019	Scale NTS
Approved By		Date	Drawing is supplied by Anderton Concrete Ltd and must not be reproduced or shown to others without prior written consent.
Anderton Concrete Ltd. 2019 ©			