



# IBSTOCK ECOHABITATS BUILDING IN BIODIVERSITY

CLICK TO FIND OUT MORE [▶](#)

**WE ARE**  
Bricks and more.





# WE ARE

at the heart of building.

We offer a diverse range of building products, solutions and expert technical and design services that enable our customers to create inspirational spaces and places.

Everything we do revolves around our valued customers and we continuously strive to exceed their expectations. We pride ourselves on leading for new, innovative and sustainable products and solutions, both for today and for a new era of building.

**WE ARE at the heart of building. WE ARE Istock.**



Bricks and Masonry

Facade Systems

Roofing

Flooring and Lintels

Staircases and Lift Shafts

Fencing and Landscaping

Retaining Walls

Rail and Infrastructure



## Design and Technical Services

We are committed to providing the best possible design and technical support to our customers. From expert advice to a sector-leading training and CPD provision, Istock's range of design and technical services are especially configured to give architects and specifiers the access to the support they need at every stage on their project journey – from concept to build.





# INTRODUCTION

Our range includes:

**Our EcoHabitat range is designed to provide safe spaces for bees, bats, swifts, hedgehogs, sparrows and starlings, enabling them to live in harmony with people.**

With an increasing number of our customers now applying Biodiversity Net Gain Principles (BNG) to new developments – the guarantee that a site will have a positive ecological impact upon completion – Ibstock is investing in our built-in EcoHabitat range to support these gains through the lifetime of the homes our customers build.

Developing our product range to help tackle nature loss and promote biodiversity is a key part of Ibstock’s sustainability strategy. We are taking action on our own sites across the UK as we work towards being a BNG business as well as supporting our customers to achieve their own sustainability goals.

Ibstock EcoHabitats are designed to work with Ibstock’s wider range of construction products, no special skills are required for install beyond normal professional practise, making them easy to include in a standard construction.

Bee Habitat Bricks

Hedgehog Boards

Bat Boxes

Swift Boxes

Sparrow and Starling Boxes

Clay and concrete Bee Habitat Bricks

Concrete product range

Clay product range

EcoHabitat range

Further information





# BEE HAPPY

## THE BEE HABITAT BRICK

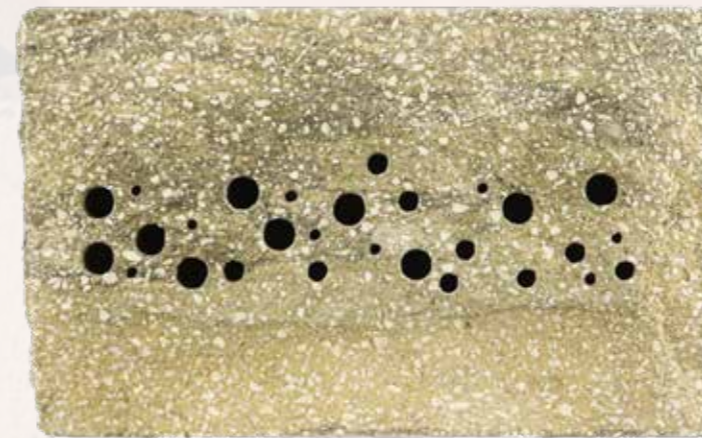


As a result of international campaigns, bees are now rightly seen as a critical part of the natural world and we are being encouraged to invite these fascinating creatures into our gardens and, with the Istock Bee Habitat Brick, safely into our living environments.

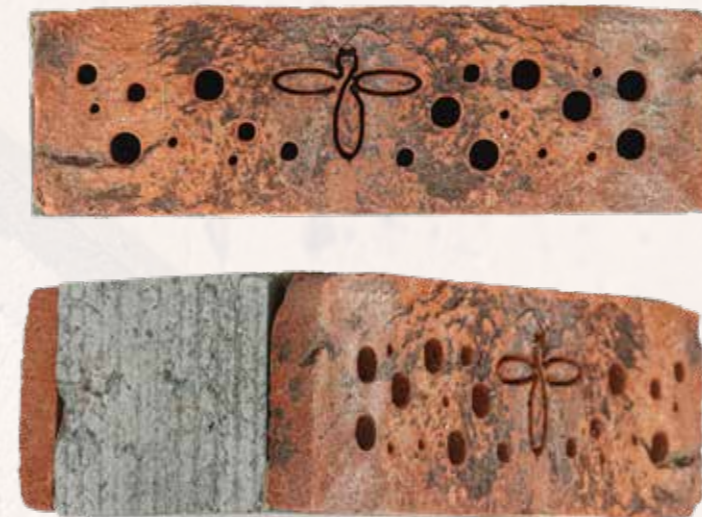
Over the past decade, numbers of our native bees have been falling at an alarming rate. This is in part due to habitat loss as our urban areas grow, which poses a mortal threat to these vital pollinators.

Around 240 species of pollinators are solitary bees who do not live in colonies but in cracks, crevices and holes in trees, walls and buildings.

Available in both clay and concrete, the Istock Bee Habitat Brick allows the bee to create a safe nest in the face of a brick. With an enclosed back and sides, resident bees can only enter and leave through the face holes, ensuring safety for both bee and homeowner.



Concrete Walling Stone block



Clay brick

"It's reassuring to see a new style of bee habitat coming to the market from a manufacturer the size and stature of Istock. Bug Life is delighted to see these bricks being built into long term structures providing homes for solitary bees year after year."

**Paul Hetherington**  
Director of Fundraising and Communications  
at Bug Life





# BEE HABITAT BRICKS

## TECHNICAL INFORMATION



### Guidelines to construction

Ibstock Bee Habitat Bricks can be built into any standard clay brick construction using the following guidance.

Bee Habitat Bricks should be placed in a warm, sunny spot on a south-facing wall at a minimum height of 1m, with no vegetation obstructing the holes. It is highly recommended that bee-friendly plants should be located nearby so that the bees using the bricks have a food source, otherwise it is unlikely that the brick will be used.

Target species are a number of solitary bees including mason bees, leafcutter bees and harebell bees. Recommended height is 1-1.5 metres from ground level. South or south easterly facing walls within 100 metres of flowering habitat is recommended, preferably closer to potential food sources.

The Bee Habitat Bricks should be spaced out, no more than four per 1m<sup>2</sup> of brick wall.

Siting under window openings should be avoided.

The Bee Habitat Brick should be installed in the same way as standard masonry. Using the Bee Habitat Brick as recommended will not cause any issues with movement. The perforated entrance holes do not travel all the way through the brick, meaning cavity walls are protected.

### Cleaning and Care Guidance

Cleaning and maintenance of the Bee Habitat Brick is not completely necessary. However, cleaning is recommended in order to optimise bee habitation.

Female Bees nest close to where they first emerge, so there is a great possibility that, once your brick is occupied, this will be a lifetime cycle. Some species of bees prefer to use clean holes for laying their egg, whilst other types of solitary bee will clean the cavities out prior to nesting.

If you would like to clean the cavities in your Ibstock Bee Habitat Brick, we recommend checking with a torch making absolutely sure that there are no bees present. Use a pipe cleaner or short length of thin electrical wire; Insert into the cavity first to clear any nesting material and then thoroughly clean around the hole, drawing out any dirt/detritus.

It is recommended that this is done from October onwards when it is apparent which nests are full, have failed or are empty.





# A HOLE NEW WORLD THROUGH THERE

## THE ECOHABITAT HEDGEHOG BOARD

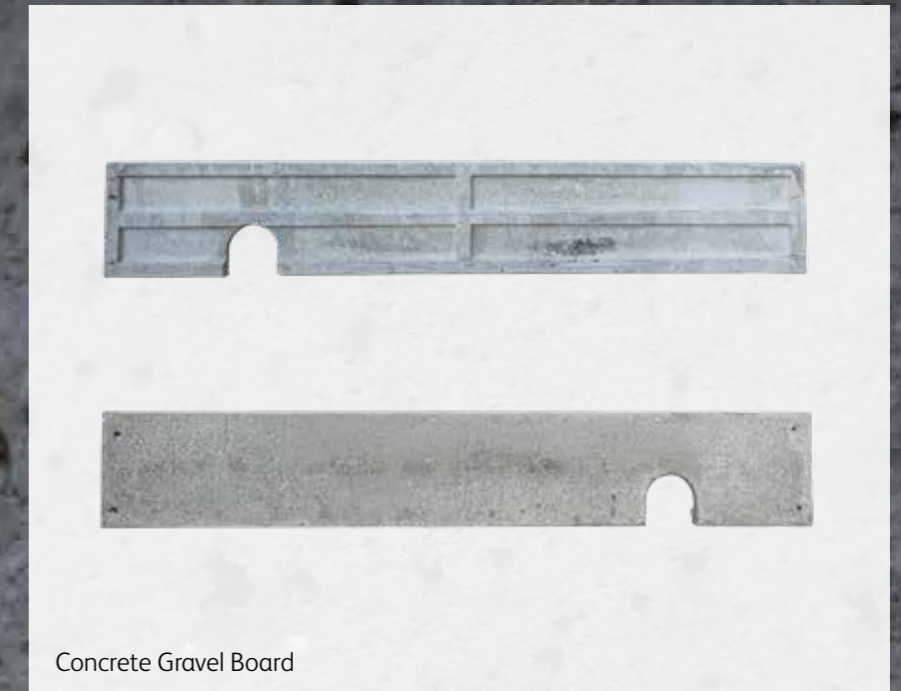


### Why put a hole in a concrete gravel board?

Hedgehogs. That's right, our spikey little friends need to be able to roam far and wide in search of food, mates and nesting sites. Hedgehogs are classified as vulnerable to extinction and are on the 'Red List' for British mammals. Making the smallest alterations to our built environment can make a difference to Hedgehog habitats.

Constructed with a pre-cut hole to enhance the presence and habitation of wildlife, the hedgehog board is designed to keep hedgehogs safe when entering and exiting a garden without affecting the performance of the gravel board.

Our Hedgehog Boards have not only been manufactured to protect our hedgehog population, they will also protect your fence panel against the risk of rot and damp.



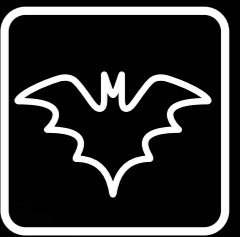
Concrete Gravel Board





# PROVIDING BATS WITH SAFE HABITATS

## THE ECOHABITAT BAT BOX



With 17 species protected under UK law, Britain's Bat population are well protected to preserve their vital role in the nation's eco-system. The smallest and most common of these species is the Pipistrelle, a crevice dweller that roosts in small colonies.

Ibstock offers Bat Boxes for both Brick and Cast stone walling systems, creating a match to the aesthetic of any Ibstock Wall.

Discreet and easy to install, Ibstock's clay-faced Bat Box provides a haven for this important, yet endangered, mammal. Available in red, buff and blue bricks and can be brick cladded in any brick type. Ibstock's clay-faced Bat Box solution allows for the creation of several roosting zones within the box, making it the ideal product for new builds and conservation work.

The Forticrete enclosed Bat Box provides a secure habitat for Pipistrelle bats, replicating the type of environment they would seek in nature. Featuring a conventional cast stone front face, combined with internally sawn and roughened high grade plywood, the Forticrete 'Stone in Stock' Bat Box provides a safe haven for bats and is suitable for both new build and retrofit applications.

Designed to course with standard masonry and featuring a maintenance free entrance, bespoke specifications can be designed for any application, with box motifs available as an optional extra.



Clay Bat Box



Concrete Bat Box





# THE SWIFT SOLUTION

## THE ECOHABITAT SWIFT BOX



Each year, more than 59,000 pairs of swifts migrate to the UK from Central and Southern Africa, reuniting annually at the same nesting site. With Swifts favouring urban areas as habitat, Ibstock's Swift Box has been designed to provide a safe haven for pairs to return and nest in.

The swift population continues to decline, with the species currently on the Red UK conservation status. This is due, in part, to modern buildings failing to provide a suitable nesting site, due to the effective sealing of eaves.

Ibstock's solution, available in both clay and cast stone, has been carefully designed for both new build and retrofit applications where there is a requirement to provide habitats for birds.

This hollow box is mortared into the external leaf of a cavity wall creating a secure, weather resistant and attractive finish while remaining accessible to Swifts. As with Ibstock's Bat Boxes and Bee Habitat Bricks, a range of Clay and Cast Stone finishes in standard and bespoke specifications are available.



Clay Swift Box



Concrete Swift Box







# SPARROW AND STARLING BOXES

## SAFE SPACES FOR SPARROWS AND STARLINGS



Sparrows are a friendly, gregarious, and instantly recognisable stalwart of the British garden. In spite of their enterprising nature, the sparrow population is dwindling, with monitoring suggesting a 71% drop in both urban and rural numbers between 1977 and 2008.

With some 5.3m breeding pairs believed to be active in the UK, ensuring they have a safe space to nest is crucial for the species continued survival.

While sparrows often choose holes or crevices within buildings to build their nests, they are also happy to use nestboxes, with the main nesting season running from April to August.

To help bolster the UK's sparrow population and provide them with a place of safety and comfort, Istock has developed a Sparrow box nesting solution. With a front plate cut from Istock's fireborn bricks and available in an eye-catching red, blue or cream, the hollow middle and solid back of the box creates a safe environment for sparrows.

The sparrow box measures up at 280x203x178mm, giving internal dimensions of 230x153x158mm, with a 32mm diameter aperture. A starling version is also available at the same size, with a 48mm diameter aperture.

The front plate of both the sparrow and starling boxes can be removed for nest cleaning; minimising the risk of disease or infection.



# CLAY AND CONCRETE BEE HABITAT BRICKS



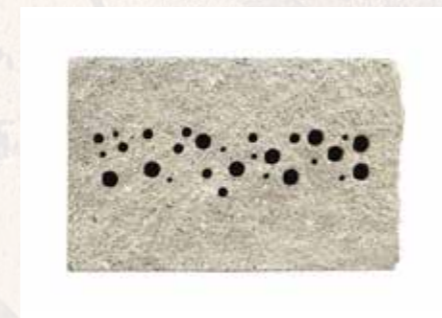
Bee Habitat Brick - Clay



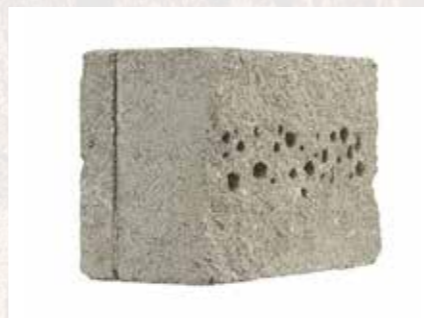
Bee Habitat Brick - Concrete



Bee Habitat Brick - Clay



Bee Habitat Brick - Concrete



Bee Habitat Brick - Clay



CLAY BEE HABITAT BRICK			
ITEM CODE	ITEM NAME	ITEM DESCRIPTION	L x W x D (mm)
Buff Bee Habitat Brick	Cheddar Golden	Bee Habitat Brick	215 x 102 x 65
Red Bee Habitat Brick	Cheddar Red	Bee Habitat Brick	215 x 102 x 65
Blue Bee Habitat Brick	Slate Blue	Bee Habitat Brick	215 x 102 x 65

CONCRETE BEE HABITAT BRICK			
ITEM CODE	ITEM NAME	ITEM DESCRIPTION	L x W x D (mm)
BEEBRICK-ASBOW	Anstone Split Black Old Weathered	Bee Habitat Brick	225 x 100 x 140
BEEBRICK-ASBB	Anstone Split Black Buff	Bee Habitat Brick	225 x 100 x 140
BEEBRICK-SSBOH	Shearstone Split Blackmoor Olde Heather	Bee Habitat Brick	220 x 100 x 140
BEEBRICK-SSCV	Shearstone Split Cotswold Village	Bee Habitat Brick	220 x 100 x 140

Bespoke finishes available on all products - please contact for more information



# CONCRETE PRODUCT RANGE



Bat Box - Concrete



Swift Box - Concrete



Hedgehog Board



## CONCRETE PRODUCT RANGE

ITEM CODE	ITEM NAME	ITEM DESCRIPTION	L x W x D (mm)	APERTURE
CEB/7996/BBOX/BT	Bat Box	MTO Bat Box Bath	440 x 100 x 215	60 x 55
CEB/7996/SBOX/BT	Swift Box	MTO Swift Box Bath	327.5 x 153 x 140	65 x 32
GBR295HPR	Gravel Board	Hedgehog Gravel Board	1830 x 295 x 47	-

[www.ibstock.co.uk/products/ecohabitats](http://www.ibstock.co.uk/products/ecohabitats)





# CLAY PRODUCT RANGE

## Bat Box C



Bat Box - Clay

Bat Box - Clay

## Bat Box B



Bat Box - Clay

Bat Box - Clay

[www.ibstock.co.uk/products/ecohabitats](http://www.ibstock.co.uk/products/ecohabitats)

### CLAY BAT BOXES

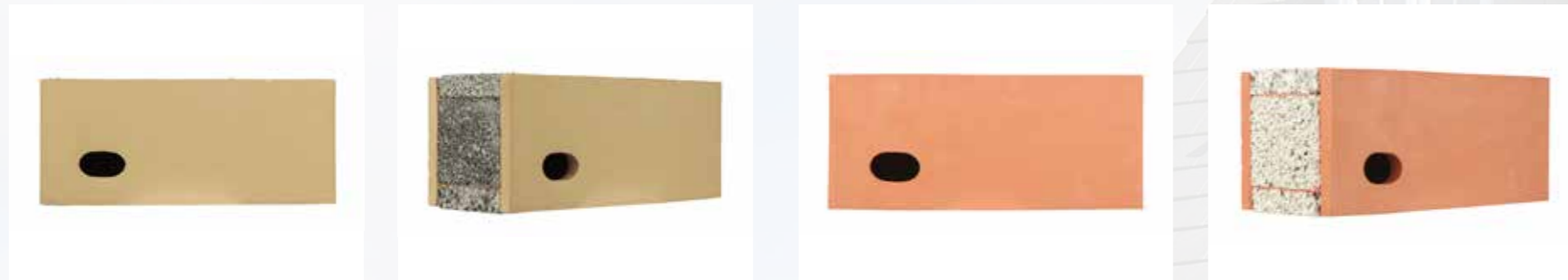
ITEM CODE	ITEM NAME	ITEM DESCRIPTION	L x W x D (mm)	APERTURE
BATBOXA	BRICK TBA	BAT BOX A	215 x 65 x 102	
BATBOXB-215	BRICK TBA	BAT BOX B	215 x 215 x 102	215mm x 30mm
BATBOXB-290	BRICK TBA	BAT BOX B	290 x 215 x 102	215mm x 30mm
H0360A-BATBOXC-215	Smooth Red	BAT BOX C	215 x 215 x 102	215mm x 30mm
H0360A-BATBOXC-290	Smooth Red	BAT BOX C	290 x 215 x 102	215mm x 30mm
H0361A-BATBOXC-215	Smooth Blue	BAT BOX C	215 x 215 x 102	215mm x 30mm
H0361A-BATBOXC-290	Smooth Blue	BAT BOX C	290 x 215 x 102	215mm x 30mm
H0362A-BATBOXC-215	Smooth Cream	BAT BOX C	215 x 215 x 102	215mm x 30mm
H0362A-BATBOXC-290	Smooth Cream	BAT BOX C	290 x 215 x 102	215mm x 30mm
BATRENDER-215		BATBOX C 215 - NO PLATE	215 x 215 x 102	215mm x 30mm
BATRENDER-290		BATBOX C 290 - NO PLATE	290 x 215 x 102	215mm x 30mm

\* 215mm Batbox B & Batbox C = 2 x 65mm courses + 10mm joint \*290mm Batbox B & Batbox C = 3 x 65mm courses + 10mm joint





# CLAY PRODUCT RANGE



Swift Box

Swift Box



Sparrow and Starling Box

[www.ibstock.co.uk/products/ecohabitats](http://www.ibstock.co.uk/products/ecohabitats)

## CLAY SWIFT, SPARROW AND STARLING BOXES

ITEM CODE	ITEM NAME	ITEM DESCRIPTION	L x W x D (mm)	APERTURE
G0360A-SWIFT01	Smooth Red	Swift Box	327 x 145 x 140	55mm x 33mm
G0361A-SWIFT01	Smooth Blue	Swift Box	327 x 145 x 140	55mm x 33mm
G0362A-SWIFT01	Smooth Cream	Swift Box	327 x 145 x 140	55mm x 33mm
SPARROW BOX	Smooth Red	Sparrow Box	280 x 203 x 140	32mm
SPARROW BOX	Smooth Cream	Sparrow Box	280 x 203 x 140	32mm
SPARROW BOX	Smooth Blue	Sparrow Box	280 x 203 x 140	32mm
STARLING BOX	Smooth Red	Sparrow Box	280 x 203 x 140	48 mm
STARLING BOX	Smooth Cream	Sparrow Box	280 x 203 x 140	48 mm
STARLING BOX	Smooth Blue	Sparrow Box	280 x 203 x 140	48 mm

Swift boxes; Each item is equivalent to 3 bricks (2 bricks high 1.5 bricks long)





# ECOHABITAT RANGE

Our EcoHabitats help to encourage safe spaces for specific wildlife, allowing them to live in harmony with people.

We are passionate about supporting increased biodiversity wherever our products are used. Our range of EcoHabitat products are a great complement to any project, and can help satisfy Special Environmental Needs – now commonly a requirement of the planning process.



## SWIFTS



**VISUAL MATCH**  
Red, Buff or Blue

**LOW MAINTENANCE**  
Built to last the life of the wall

**SAFE**  
Homeowner and wildlife are safely separated

**EASY**  
Installs like a brick

## SPARROWS & STARLINGS



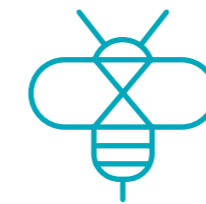
**VISUAL MATCH**  
Red, Buff or Blue

**LOW MAINTENANCE**  
Built to last the life of the wall

**SAFE**  
Homeowner and wildlife are safely separated

**EASY**  
Installs like a brick

## BEEES



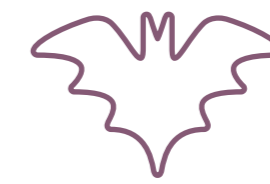
**VISUAL MATCH**  
All brick and concrete walling stone types

**LOW MAINTENANCE**  
Built to last the life of the wall

**SAFE**  
Homeowner and wildlife are safely separated

**EASY**  
Installs like a brick

## BATS



**VISUAL MATCH**  
All brick and concrete walling stone types

**LOW MAINTENANCE**  
Built to last the life of the wall

**SAFE**  
Homeowner and wildlife are safely separated

**EASY**  
Installs like a brick

## HEDGEHOGS



**VISUAL MATCH**  
Looks like a standard gravel board

**PROTECTS**  
Fence from damp and rot

**EASY**  
Installs like a standard gravel board

**ROBUST**  
Concrete construction with steel inserts



For more information on our EcoHabitats range of products and to discuss your project requirements, please email [ecohabitats@ibstock.co.uk](mailto:ecohabitats@ibstock.co.uk)

View our latest Sustainability Report by [clicking here](#).

[www.ibstock.co.uk/products/ecohabitats](http://www.ibstock.co.uk/products/ecohabitats)

