



## SITE PRACTICE AND TROUBLESHOOTING DISCOLOURATION OF MASONRY DUE TO SATURATION

**The effects of saturation of absorbent materials can be aesthetically disconcerting if not properly understood.**

Discolouration or darkening can appear during various stages of construction, usually after rainfall, and can affect specific areas or random patches dependant on the circumstances or absorbency of the masonry unit.

Many materials used in construction are porous to a lesser or greater degree, whether it be stone, concrete, brick, mortar etc. This should be allowed for in design and detailing of buildings. Other materials such as glass, metals and plastics etc. are not absorbent and water will readily run off these components onto adjacent materials.

During rainfall, saturation of masonry can be intensified by other components, for example rain-water outlets prior to the down-pipes being fitted or scaffolding boards adjacent to freshly constructed masonry. The after effects will be localised darkened patches.



Saturation occurring where downpipes have not been installed.

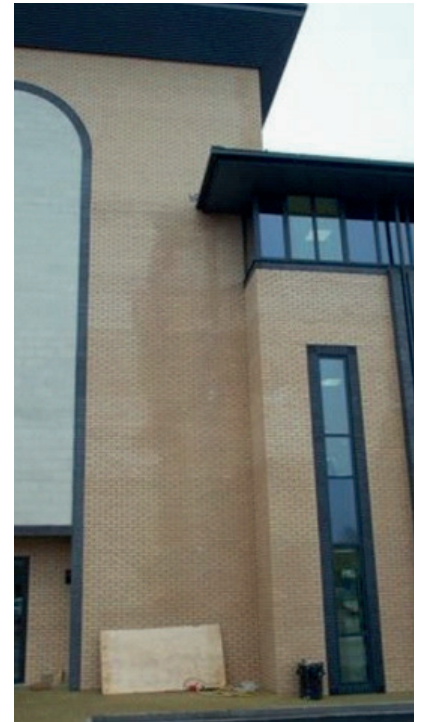
With brickwork, mortar takes at least a month to reach its optimum strength and hardness and the structure will need some care and consideration until then. Therefore it is likely that water can penetrate readily and saturate units whilst the building is in an unfinished state.

As with any absorbent material, it will take time to dry out thoroughly and this will be governed largely on the time of year construction takes place and by the amount of protection afforded during the building process.

Good site practice and protection of newly laid masonry from rainfall can minimise saturation which could also trigger efflorescence or lime leeching from mortar or concrete components.

### Remember:

- Turn back scaffolding boards to stop rain splashing onto brickwork.
- Hessian is not a waterproof covering.
- Protect stacks of unused materials from rainfall at all times.
- Fit gutter downpipes or temporary channels as soon as possible.



Design detailing has caused saturation staining where water runs off roof ledges.



Saturation occurring prior to roof & window placement.

Although the instructions contained in this publication and any other information published by Ibstock Brick Ltd are believed to be accurate at the date of publication, they are strictly for guidance only and Ibstock Brick Ltd accepts no liability in relation to their use or for any losses, howsoever caused. You are responsible for taking all reasonable steps to ensure your use of the product conforms to all applicable health and safety requirements from time to time. If in doubt, please consult appropriately qualified persons. All products sold by Ibstock are sold subject to Ibstock's Terms and Conditions of Sale, a copy of which is available on request.