



Forticrete

PAN8 VERGE SYSTEM

The PAN8 Verge systems have been specifically designed to provide a simple and effective way of securely fixing PAN8 tiles without the need for mortar. Replicating the characteristics of a traditional clay pantile, the large format concrete tile can now be installed in conjunction with the PAN8 Verge system to ensure that water is discharged into the gutter at the eaves, in addition to improved longevity and durability, as the system has been specifically manufactured to accommodate the tile's taller profile at the verge.

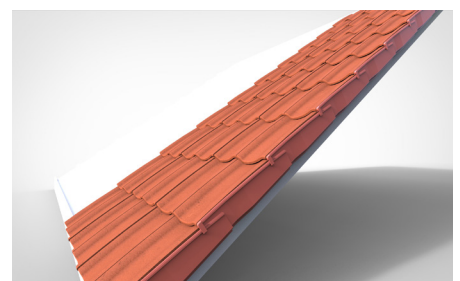
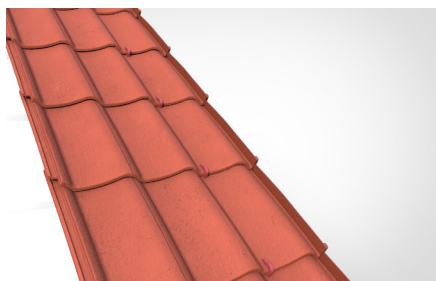
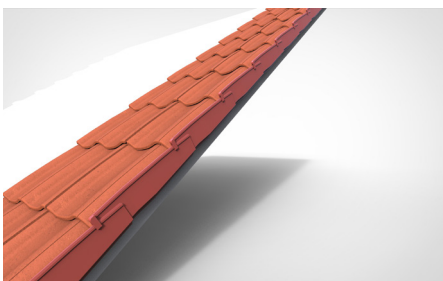
Offering increased build efficiencies, the roofing accessory contains a Verge Continuation and Verge Starter pack, which need to be ordered together. Both solutions are manufactured in the same authentic shades as the PAN8 tiles, meaning there is no disparities in colour or quality of finish.

The PAN8 range is recognised for providing superior coverage, requiring just eight tiles per square meter, whilst its thinner leading edge sets the standard for aesthetics. The new verge system replicates this visual appeal to create a streamlined finish.

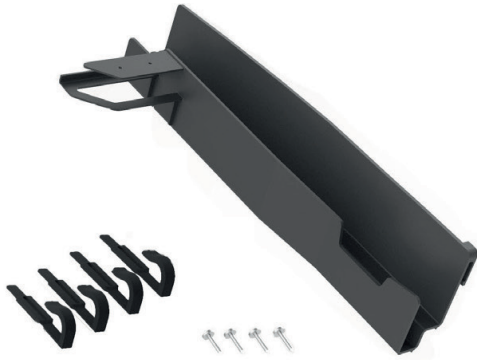
The new PAN8 Verge system is supplied with technical advice and an installation manual is available for download from the Forticrete website and support as needed from our Customer Service Centre of Excellence based in Anstone.

Key Features

- Available in Grey and Rustic colours
- Plastic Type: Polypropylene
- Conforms to the requirements of BS8612
- A verge pack will cover between 3.2m-3.45m dependant on batten spacing
- Not suitable for use with raked cut verges
- PAN8 Verge units are 25mm taller than SL8 Verge units
- Installation guide can be found on the Forticrete website



Product Specification



Verge Continuation Packs (3.2 - 3.45 linear metres)

PAN8 Left Hand Pack Code - BUZ/7956/P8VL/--
 PAN8 Right Hand Pack Code - BUZ/7956/P8VR/--

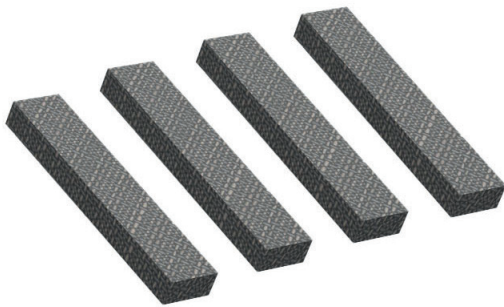
- 10 no. Verge Continuation Units (Handed)
- 10 no. Perimeter Clips
- 20 no. 20mm Nails



Verge Starter / Ridge End Packs

PAN8 Starter/Ridge End Pk - BUZ/7956/P8VS/--

- 1 no. Starter Unit Left Hand
- 1 no. Starter Unit Right Hand
- 1 no. Top Foam Filler
- 4 no. 20mm Nails



Stone Verge Foam Pack

Pack Code - BUZ/7967/SVFP/00

- 10 no. Stone Verge Foams

New Product Code	New Product Description
BUZ/7956/P8VL/--	PAN8 Verge Pk LH (10 Units)
BUZ/7956/P8VR/--	PAN8 Verge Pk RH (10 Units)
BUZ/7956/P8VS/--	PAN8 Verge Starter/Ridge Pk
BUZ/7967/SVFP/00	Stone Verge Foam Pack (10 Units)



Customer service and technical contact details:

T: 01525 244900
 F: 01525 850432
 E: roofing@ibstock.co.uk

Forticrete is an Ibstock Plc company.

