

IN THIS ISSUE



**Hidden House**  
Replacing a former 1950's dwelling.



**Oak Farm**  
The addition of a stunning modern extension.



**King's School Boathouse**  
A striking modern contrast to the area's rich Roman and medieval archaeology.

# design

FROM IBSTOCK BRICK

**SPECIAL ISSUE**

# LINEAR BRICKS



## EXCITING NEW OPPORTUNITIES FOR DESIGN

The new Ibstock 'Linear' range has been created to give architects the flexibility to create ever more distinctive exteriors, whilst still retaining the beauty, longevity and traditional feel that only brick can give.

With a range of lengths up to 490mm and depths of either 65mm or 50mm, Ibstock Linear bricks allow you to accentuate the linearity of the façade to create a range of dramatic new effects that take architecture to a new level.

Over 100 different sizes, textures and colours means no compromises when it comes to choosing exactly the appearance you want - with Linear you just add an extra touch of pizzazz!

Go to  
pg10  
to view the  
full project

### GET CREATIVE WITH BOND PATTERNS

Linear bricks lend themselves to variations in bond patterns. Headers in Linear English Bond create individuality, as you can see from King's Boat House (page 10), which also internally features Linear bricks built three courses quarter bond with every fourth course headers.

A simple quarter bond design can also be used to great effect to create a distinctive appearance to both interior and exterior brickwork.

And for a Domestic Garden Room extension in Edinburgh (page 17), two different linear brick sizes (440x50mm and 327x50mm) have been used together in the style of a Linear Flemish Bond, to create a unique canvas.

*The options are endless.*





THE LINEAR RANGE

LINEAR - GLAZED FINISHES

Stretching the imagination with glazed Linear gives the architect and specifier the opportunity to develop unique concepts in design, offering a greater freedom of choice; in colour, in texture and in finish.



LINEAR - STONE FINISHES

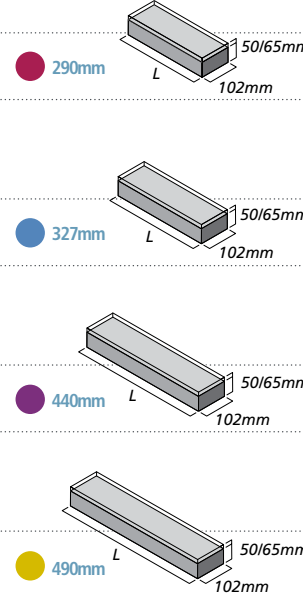

LINEAR - CLAY FINISHES



LINEAR SIZES

All available in  
**50 + 65**  
 mm height

+ upto 4 lengths



PROJECTS

	<b>06</b>		<b>08</b>
	<b>10</b>		<b>12</b>
	<b>14</b>		<b>16</b>
	<b>17</b>		

FEATURES

	<b>02</b>
	<b>18</b>
	<b>21</b>
	<b>22</b>
	<b>24</b>

Front Cover Image: Market Drayton Police Station



## Hidden House, Lympstone

Replacing a former 1950's dwelling on a secluded garden site, Hidden House has been designed to fuse with its environment, whilst providing panoramic views over the Exe estuary and surrounding landscapes.



Architect  
**Stan Bolt Architect, Brixham, Devon**  
 Telephone  
**01803 852588**  
[www.stanboltarchitect.com](http://www.stanboltarchitect.com)

“The realisation of the concept naturally suggested brickwork to be employed extensively to the ground floor walls... The linearity of the scheme is accentuated by the use of the Linear brick units and the use of deep raked bed joints and almost flush perpendicular joints.”

Stan Bolt: Architect

### Linear Birtley Olde English

An authentic waterstruck red blend brick with traditional distressed finish, available in a range of standard and Linear sizes.

### The house is situated within a secluded walled enclosure, carefully designed with varying heights to provide the right mix of privacy and dramatic views.

It features a series of inside / outside rooms, which blur the distinction between interior and exterior; within a simple external shell, devoid of unnecessary detail and in total sympathy with its environment.

Brickwork has been employed extensively to the ground floor walls, reflecting the traditional use of the material locally whilst highlighting the man-made intervention in the landscape.

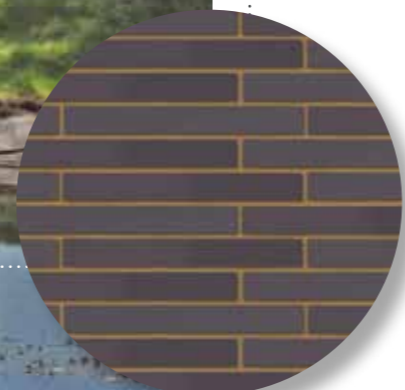
440mm 'Linear' bricks, used in association with deep raked bed joints and almost flush perpendicular joints, reinforce the linearity of the scheme, and provide a distinct contrast with the lightweight, zinc-clad, second floor structure above.

The choice of materials creates simplicity and inherent durability to the property and ensures that it will age gracefully, whilst engaging sympathetically and fully with its environment.



# Oak Farm, Allerton, Liverpool

Once a derelict Grade II listed 17th century farmhouse, Oak Farm was shortlisted for the RIBA Manser Medal in 2004 following a restoration project which included the addition of a stunning modern extension.



Architect  
**Shedkm Architects, Liverpool**  
Telephone  
**0151 709 8211**  
[www.shedkm.co.uk](http://www.shedkm.co.uk)

**Linear Natural Blue**  
A smooth, clean blue brick providing a distinctive, attractive finish.

In 2011, more space was required for a study, small apartment and guest bedroom. A further extension was planned that connected with the west facing aspect and overlooked a small lake.

To maintain the hierarchy of the buildings, the new extension was built in the form of a simple black box with limited fenestration, using dark brick which contrasted with the warm red sandstone of the house and existing extension to give it the appearance of a farm outbuilding.

To further differentiate it from the main building, Ibstock's Linear Natural Blue bricks were laid quarter bond with recessed 6mm joints, rather than the normal 10mm, to give a distinct appearance and accentuate the linearity of the modern extension. A simple glass link has been used to give the new extension the appearance of standing clear of the main house.



## Michael Baker Boathouse, The King's School, Worcester

Replacing a small 1950's building, unsightly and suffering long term flood damage, the striking prow-shaped building is a key element of the school's 10 year development masterplan.



**On the line of the old city defences, the building is at the edge of the historic city core and provides a striking modern contrast to the area's rich Roman and medieval archaeology.**

The lightweight upper floor of the unique two storey structure is constructed in the shape of a boat cloaked in Chestnut timber laths. The laths are set at an angle to enhance the dynamic form of the building and will weather down to a natural silver-grey colour in keeping with the sensitive historic context.

By contrast, the ground floor, extended by 60% to house the School's considerable fleet of rowing boats and sculls, is constructed in robust solid brickwork to withstand regular flooding. Growing out from the line of the historic brick embankment, the new outer retaining wall is constructed in 440mm long Linear

bricks to reflect the elegant elongated form of the building.

Ibstock created a unique rustic brick blend for the building to marry with the existing Victorian brickwork and local sandstone. Laid in English Garden Wall Bond with three courses of Linear double length stretchers and one course headers, the design complements the diagonal siding above. Internally, Linear bricks built three courses quarter bond with every fourth course headers, create a distinctive canvas.

### **Birtley Linear Kings Blend**

A unique blend created specifically for this project.

Ibstock Kevington precast lintels, incorporated over all openings and voids with integral brick faces, create continuity of design.

Sustainability is a central consideration throughout the construction of the new Boathouse, which is built using very low energy German PassivHaus design principles, with triple glazing, super-insulation and air-tightness contributing towards environmental performance to EPC A – approaching zero carbon standard.

“The new outer retaining wall is constructed in 440mm long Linear bricks to reflect the elegant elongated form of the building.”

**Stephen Townsend, Project Architect  
Associated Architects**

Linear  
Birtley Linear  
Kings Blend

Architects  
**Associated Architects, Birmingham**  
Telephone  
**0121 233 6600**  
[www.associated-architects.co.uk](http://www.associated-architects.co.uk)



## Minghella Building, University of Reading

Named after Oscar-winning director, Anthony Minghella, the new £11 million home for the University of Reading's Department of Film, Theatre and Television has been designed to provide both an educational facility and public performance space.



The building, on three levels, was conceived as a set of teaching spaces grouped around a vibrant central atrium. Staff and teaching spaces sit above and around the principal volumes of two fully equipped theatres, a screening room, multi-camera TV studio, and mixing and editing areas.

Critical acoustic separation has been achieved by the creation of 'buffer' zones between performance spaces.

Large areas of 'dead' façade are created by the 'black box' requirements of the principle spaces, offering little opportunity for fenestration.

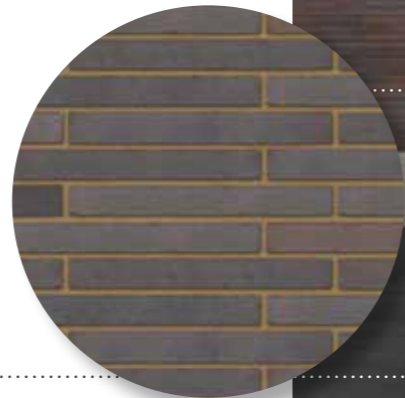
"The design challenge for this type of project is to deal sensitively with great areas of 'dead' façade created by the 'black box' requirements of the principle spaces... we made the most of double-height slit windows to the control room stairs and invested in double-length bricks, batched from two different colour sources, to give the façades interest and warmth."

Stride Treglown: Architects

Architects  
**Stride Treglown, Bristol**  
Telephone  
**0117 974 3271**  
[www.stridetreglown.co.uk](http://www.stridetreglown.co.uk)

### Linear Blue Brindle Smooth

The long format clay bricks with the distinctive warmth of the brindle colour created a distinguishing façade.



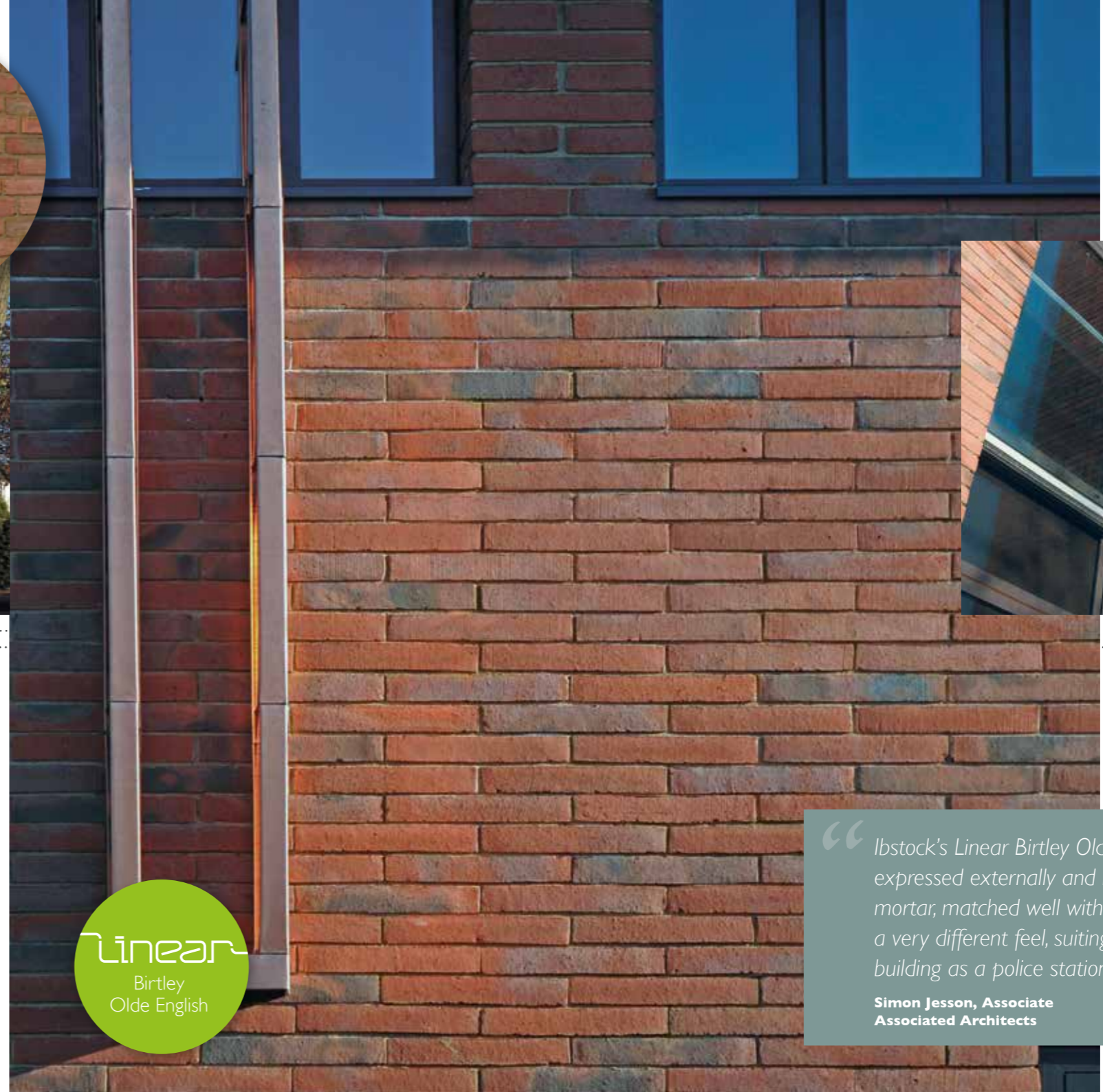


# Market Drayton Police Station

Built on the site of the original 1930's building in the heart of the town centre, the new Market Drayton Police Station meets conflicting functional demands for security and public accessibility, in line with West Mercia Police's community policing strategy.

## Linear Birtley Olde English

An authentic waterstruck red blend brick with traditional distressed finish, available in a range of standard and Linear sizes.

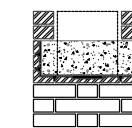


Designed for optimum energy efficiency, the building makes careful use of site orientation to maximise passive solar gain and respect for the surrounding residential properties, with secure functions located discretely at the rear together with the reception and public counter addressing the street frontage.

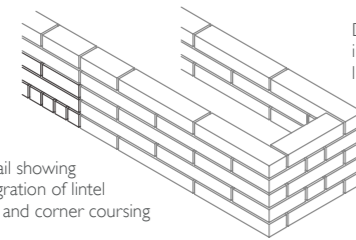
Low maintenance timber cladding has been chosen to soften the public facing elevation, whilst large diaphragm brickwork walls form the 'secure', more private side of the building. A pitched Sedum roof creates an enhanced aesthetic and minimises the visual impact of the building from adjacent homes.

In selecting the brick type it was important to maintain a character contextual with its neighbours, but which defined the nature of a public building set in a residential area.

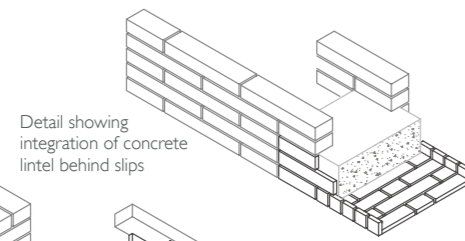
The use of brickwork was right in context, but it was felt that it was not sufficiently contrasting from the adjacent houses, and Ibstock suggested a linear solution based on Linear Birtley Olde English.



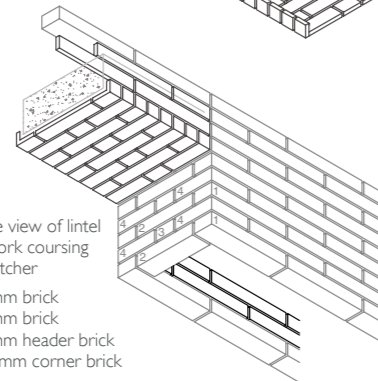
Section through lintel brickwork both leaves



Detail showing integration of lintel slips and corner coursing



Detail showing integration of concrete lintel behind slips



Worms eye view of lintel and brickwork coursing 1/2 lap stretcher

1. 440x65mm brick
2. 327x65mm brick
3. 102x65mm header brick
4. 215x215mm corner brick

Architects  
**Associated Architects, Birmingham**  
 Telephone  
**0121 233 6600**  
[www.associated-architects.co.uk](http://www.associated-architects.co.uk)



*“Ibstock's Linear Birtley Olde English in 440mm format, expressed externally and internally with a natural lime mortar, matched well with its surroundings whilst creating a very different feel, suiting perfectly the nature of the building as a police station.”*

**Simon Jesson, Associate  
 Associated Architects**



## The Lir National Academy of Dramatic Art, Dublin

Designed to renew and inspire Irish theatre, film and television, the Lir Academy has grown out of a converted and extended two-storey warehouse in Trinity College Dublin's Industrial Enterprise Centre.

“ We wanted a lot from the design of this building - foremost a state of the art facility, built specifically for the actors who will inhabit it, but also as a place that could become a cultural hub, opening its doors at night to the public for performances... ”

**Drama Academy Development Company - Client**

Linear  
Natural Blue



Architect  
**Smith & Kennedy Architects, Dun Laoghaire, Co Dublin**  
Telephone  
**+353 (0)1 2807189**  
[www.smithkennedy.ie](http://www.smithkennedy.ie)

The location, away from the academic setting of the university campus, allowed a more artisan approach to design with internal untreated steel and exposed concrete walls, zinc cladding to staircases and circulation spaces, and upper rooms opened up to give a great sense of space and light.

To improve acoustics, parallel surfaces were avoided. This was reflected in the tapered roof slab and on the outer façade brickwork, which was raked at each course to achieve an angled effect (Figure 1).

Externally, the black box nature of the main studios is expressed through a combination of dark blue standard and linear bricks, creating a dramatic visual

effect and forming a unique canvas on the front façade to accommodate temporary art installations, as a link to the wider arts community.

An unusual feature of this building was the use of dark blue Linear bricks under slung to create edges for soffits, which were lined with matching Linear FastWall™ panels to complete the dramatic exterior effect.

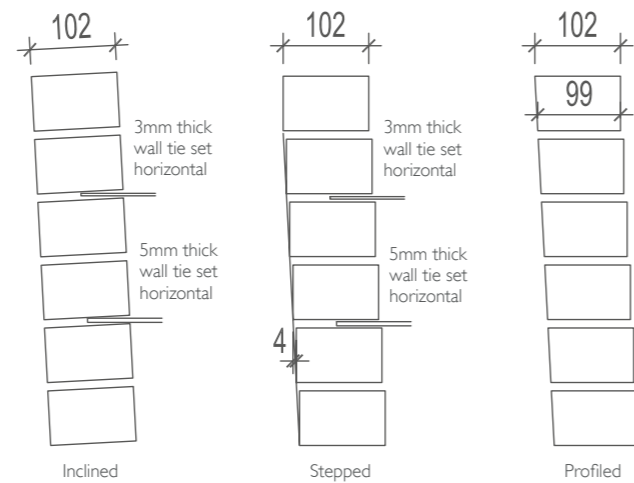


figure 1 3° Wall

**Linear Natural Blue (with Staffordshire Slate Blue Smooth).**  
A blue smooth finish brick to create a dramatic effect on contemporary buildings.

## Domestic Garden Room Extension, Edinburgh

The clients' brief was for a garden room extension, contemporary in appearance yet harmonious with the existing structure, which gave them the facility to relax with views into their enclosed garden.

**Linear Natural Cream**  
50mm high in two lengths, 327mm and 440mm, to create a distinctive linear bond.



Architect  
**Arka Architects, Falkirk**  
Telephone  
**01324 639228**  
[www.arka-architects.co.uk](http://www.arka-architects.co.uk)

Whilst the original building is finished in painted roughcast, continuing this theme would have added to existing maintenance costs.

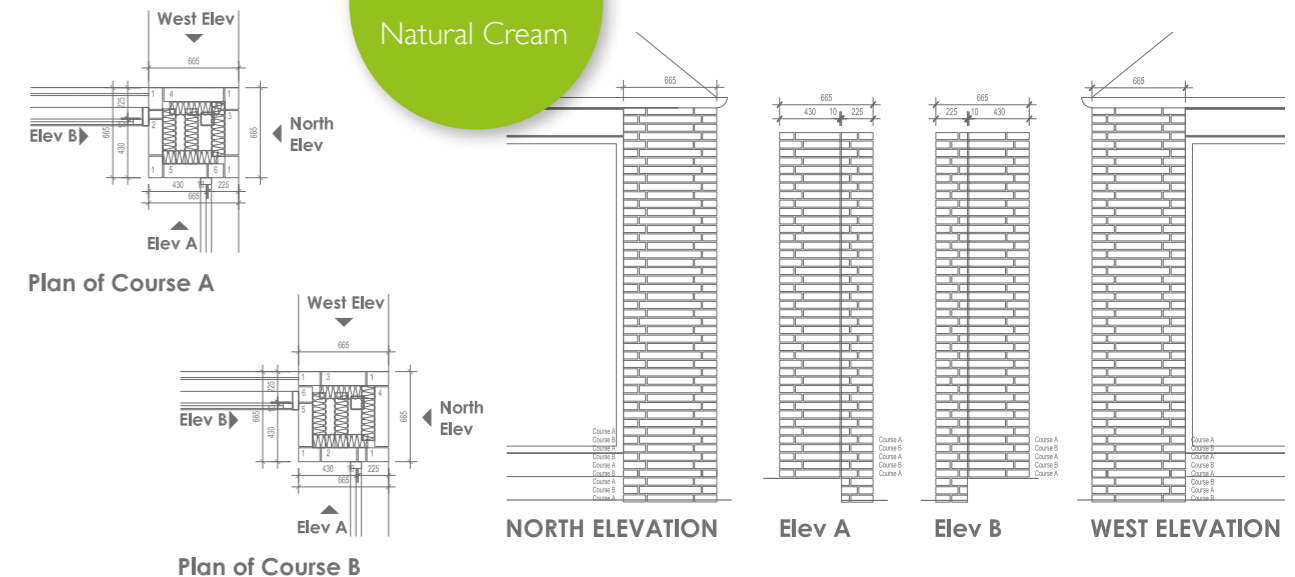
Brick was chosen in preference to the more expensive stonework option as it offered an affordable, low maintenance solution with a wide choice of colours and textures to contrast and enhance the overall scheme. The matching slate roof links the old with the new.

lbstock's Linear bricks were chosen to give the brickwork greater visual appeal, with 440mm and 327mm length bricks worked together to create a distinctive bonding pattern. This was carried through

to a new garden wall to the adjoining patio area to extend the scheme.

The choice of narrower, 50mm high bricks reinforced the linearity of the design and added to the distinctive visual appearance.

The Garden Room has been given warmth and a greater connection to the garden by bringing the outside brickwork inside around four piers at the corners of the building.





Ibstock shines in **2012 BRICK AWARDS** 

Ibstock products again shone in the 2012 Brick Awards, featuring in no less than 43 of the shortlisted projects and 7 category winners, including:

BEST INTERNATIONAL PROJECT

BEST COMMERCIAL BUILDING

BEST HOUSING DEVELOPMENT - 26 UNITS OR MORE

BEST REFURBISHMENT AND RENOVATION PROJECT

SPECIALIST BRICKWORK CONTRACTOR OF THE YEAR

VOLUME HOUSEBUILDING AWARD

INNOVATIVE USE OF BRICK AND CLAY PRODUCTS



House on Mount Anville, Dublin  
Ibstock Birtley Olde English Buff

BEST INTERNATIONAL PROJECT

**WINNER**

Gateacre & Hope Schools  
Ibstock Stuart Buff & Glazed

SPECIALIST BRICKWORK CONTRACTOR OF THE YEAR

**PLF LTD  
FEATURED PROJECT**

Student Accommodation, Somerville College  
Ibstock Reigate Medium Multi

BEST HOUSING DEVELOPMENT - 26 UNITS OR MORE

**WINNER**

West Hampstead Station  
Ibstock Umbra Sawtooth Glazed Brick

INNOVATIVE USE OF BRICK AND CLAY PRODUCTS

**WINNER**

Kitfield Avenue, Cheshire  
Ibstock Brickshield Using Brunswick Farmhouse Mixture

BEST REFURBISHMENT AND RENOVATION PROJECT

**WINNER**

Science Studios, Stroud  
Ibstock White Glazed

BEST COMMERCIAL BUILDING

**WINNER**





Barrier Park, Block B & C, London  
Ibstock Bexhill Dark



Old Merchant Taylors  
Ibstock Mellow Regent/Audley Red Mixture/Lambourn Orange Multi



Canada Waters, Blocks A1 & A2, London  
Ibstock Milburn Ashen Brown Blend/Queensbury Yellow Multi

VOLUME HOUSEBUILDING AWARD - BARRATT HOMES (3 PROJECTS)

## CAN WE WIN AGAIN THIS YEAR?

The 2013 BDA Brick Awards are almost upon us. Ibstock products have once again performed strongly, featuring in no less than 33 of the shortlisted projects! A selection of these is shown below.





# Back to basics

## DESIGNING WITH Linear BRICKS

Linear bricks open up a completely new aesthetic for buildings, whilst still maintaining the durability and low maintenance attributes associated with one of our most enduring building materials.

The different brick dimensions can be easily accommodated with just a little extra thought, yet give you additional flexibility to create a unique canvas for your building.

## DESIGNING WITH NON-STANDARD FORMATS

Ibstock has made it easy to design with Linear bricks by formulating modular tables, similar to those for 'traditional' metric bricks. Using our tables of relevant brick sizes, it is a simple matter to locate openings and returns with the given dimensions, whilst maintaining the visual integrity of whole and half bricks.

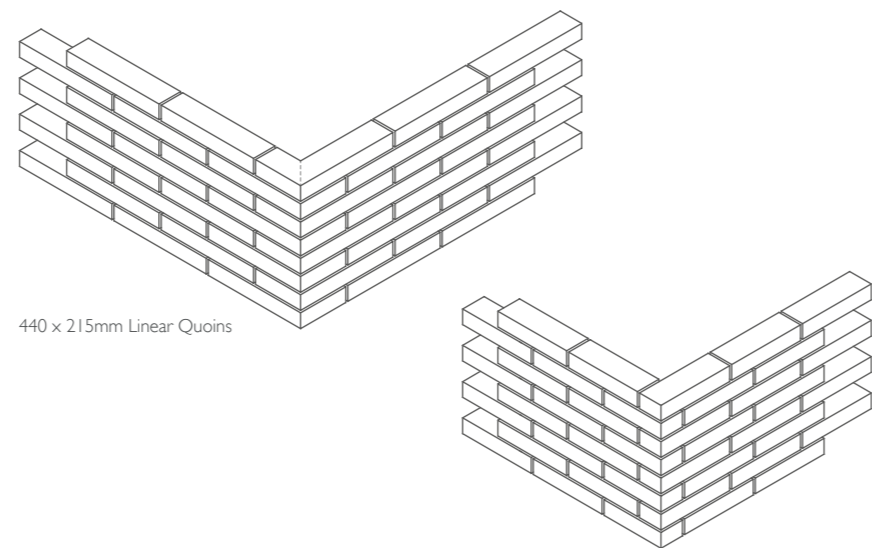
Our Technical Information Sheet TIS A3; Brickwork Dimension Tables - Larger Formats, contains both horizontal and vertical dimension tables and is available to download from <http://www.ibstock.com/technical-support.asp>.

## CORNER DETAILING

Corners are an obvious consideration when using different format bricks. Using the most popular 440x65mm format in half lap/stretcher bond, a 440x215x65mm quoin would be required to turn the corner and maintain the bond pattern.

This is usually achieved in larger units by mitre-cutting and bonding two individual bricks together to form a 90° corner or corners greater or less than 90° as required.

A similar effect can be achieved by inserting a 327x65mm brick, although this does lose the continuity of the stretcher bond.

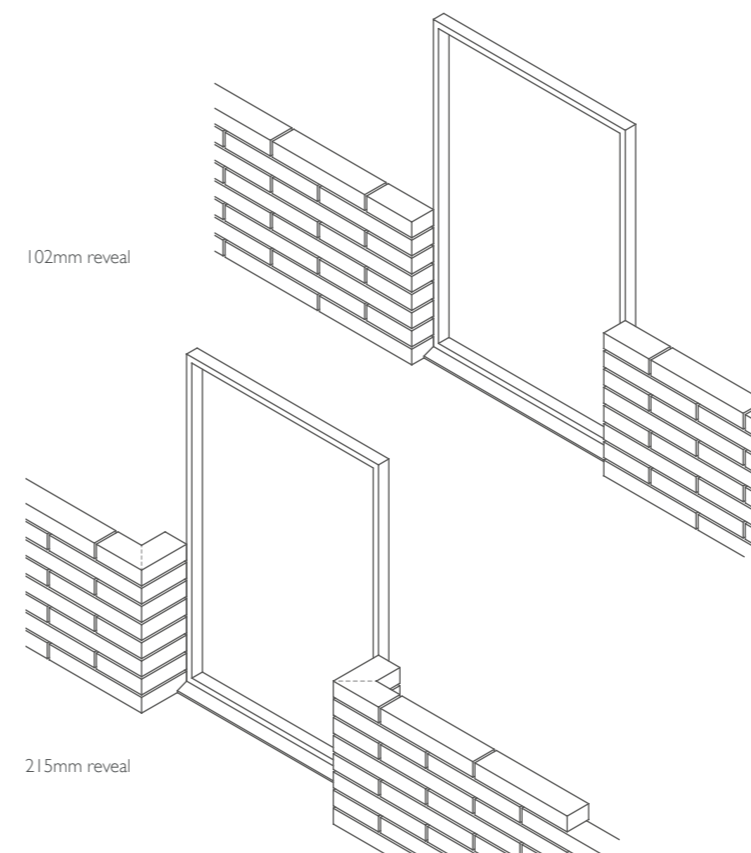


440 x 215mm Linear Quoins

Corner using standard 327mm Linear

## DOOR AND WINDOW REVEALS

These can be formed using either standard 102mm deep bricks, or by using quoins of 215mm depth, or greater as required.



102mm reveal

215mm reveal

## ACCOMMODATING DIFFERENT COURSE HEIGHTS

Linear bricks come in two different heights, 65mm - the standard brick height included in TIS A2 and 50mm.

It is relatively easy to work out coursing-heights in each case – both coursing up to the standard 2110mm door opening height (35 courses for 50mm bricks and 28 courses for 65mm bricks), which is ideal when using standard steel lintels in the blockwork inner leaf.

The major difference comes when coursing 50mm bricks against a blockwork inner leaf, as standard wall ties will not course through. The height difference is, however, easy to accommodate using more specialist wall ties which are available from Ancon. Please refer to [www.ancon.co.uk](http://www.ancon.co.uk) for more information.



HAMMER-IN TIES



DRILL AND PLUG TIES SCREWED TO THE BLOCKWORK



TWO PART TIES, ADJUSTABLE UP OR DOWN VIA A CHANNEL FIXED TO THE BLOCKWORK



## Linear- BRANDING FOR NEW RANGE

Ibstock has brought together and expanded its range of non-standard brick options under the new 'Linear' brand.

“Linear brick sizes are not new to Ibstock, but bringing them together under a single brand has given us the opportunity to focus on the wide range of effects that can be achieved once you step outside the standard brick format”, says Ibstock Marketing Manager, Andrew Halstead-Smith.

As buildings become more cutting-edge, architects are looking to express this through not just the design of the building, but through more innovative use of materials. “The variety of different colours and textures offered by brick has always provided inspiration, but with the new Linear range, architects can bring a completely new dimension to their designs”, he added.



## NEW LINEAR MICROSITE

Ibstock has created a new on-line microsite to help architects and specifiers choose the look they want from Ibstock's new Linear range and order samples of products which have caught their eye. As well as details of the expanded Linear brick range, the site shows the different styles that can be achieved using more creative bonding and pointing options, and includes examples of effects already achieved on buildings using linear design.

Check it out now at [www.linearbrick.com](http://www.linearbrick.com)

## TABLET READY

For those who prefer to access information on the move, there is now a version of the Linear website specially designed for Tablets. The site detects Tablet access and automatically re-formats the page to give viewers the optimum on-screen layout. Easy and quick to navigate, the new Tablet format means that you can now get full information on the Linear brick range no matter where you are - in the office, at home or on-site.

Simply tap in [www.linearbrick.com](http://www.linearbrick.com)

## LINEAR RANGE EXTENDED

Ibstock's new 2013 Linear range now offers a much wider choice of individual products – giving architects and specifiers even more options for creating striking and distinctive finishes for their buildings. The new range brings together more than 100 individual products in lengths from 290mm up to 490mm in 50mm and 65mm height options. Two new brick textures, Impression and Vestige have been added, with specifiers having the flexibility to blend bricks from across the range.

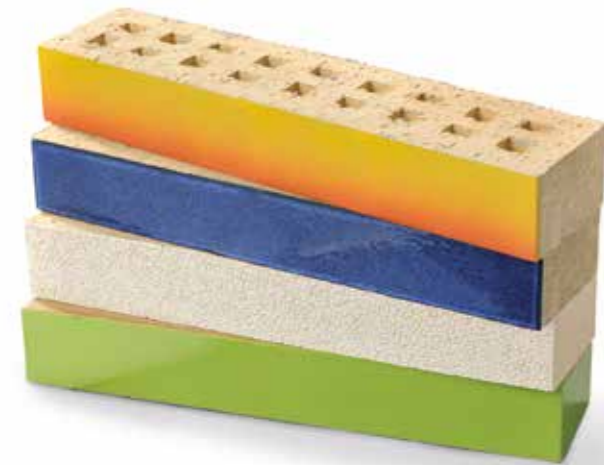
The new Ibstock Linear range now includes clay, ceramic glazed, and stone finished products.

As you would expect, in traditional clay you can choose from all of our fantastic brick finishes in an expanded range of colours and textures.

Our new stone finish products from Forticrete come in 3 different finishes - Shot Blasted, Burnished Venezia and Polished Florentine and a wide range of colours, providing a further 20+ options to choose from.

Glazed bricks are available in a further 4 finishes of Two Tone, Halo, Smooth Glazed and Frosted Glazed (see left), and almost any RAL colour can be chosen.

Ibstock's Linear range provides more choice in these stylish bricks than you could ever imagine!



Linear Gallery

Scan here or visit:  
[www.ibstock.com/qlinear/index.html](http://www.ibstock.com/qlinear/index.html)



GREAT VALUE,  
GREAT QUALITY,  
GREAT SERVICE.

**Ibstock Brick Limited**  
Ibstock, Leicestershire, LE67 6HS  
t: 01530 261999  
f: 01530 257457

e: enquiries@ibstock.co.uk

Ibstock Sales Office:  
0844 800 4575

Design & Technical Helpline:  
0844 800 4576

Sample & Literature Hotline:  
0844 800 4578

Special Shapes and Brickwork  
Components Sales Office:  
0844 736 0350



**Published by:**  
Ibstock Brick Ltd.,  
Ibstock, Leicestershire, LE67 6HS

**Editor:** Paul Smith

**Important information about CE MARKING**

From 1st July 2013 it is mandatory for any construction product, covered by a harmonised European Standard (hEN) containing a 'ZA' annex, to carry a Declaration of Performance (DoP) and a CE mark.

Standard format clay brick and pavers have been covered by hENs since 2003 and Ibstock bricks have been CE marking since then.

Although bespoke and 'one off' special products will not fall under the scope of the hEN and require CE marking, Special Shaped bricks generally will and must carry the CE marking.

Further information and Declarations of Performance can be found at:  
[www.ibstock-ce.com](http://www.ibstock-ce.com)



To find out more scan this using your smartphone.



For fast and easy access to the comprehensive range of Ibstock products and services visit  
[www.ibstock.com](http://www.ibstock.com)

NEXT TIME IN



**BrickShield**<sup>®</sup>  
Patent Pending

THE **ONLY** BRICK SLIP EXTERNAL WALL INSULATION SYSTEM (EWI) WITH **BBA ACCREDITATION**



BrickShield<sup>®</sup> is an external wall insulation system that uses a highly durable and unique Rockwool Insulation board and real brick slips. Available in almost any brick finish, BrickShield<sup>®</sup> allows a building to be thermally upgraded whilst remaining in keeping with the existing streetscape.

FEATURES AND BENEFITS

- Low maintenance
- Applied externally
- Brick finish
- Improves a buildings energy efficiency
- Applied with adhesive and fixings
- Matches existing bricks in the region/area
- Minimal disruption
- Creates a better environment
- Can help with planning
- Can be applied to many materials/structures
- Energy savings

**FASTWALL™** BRICK WALL  
CLADDING PANELS

The ultimate in rapid building techniques Kevington FastWall™ is the revolutionary new real brick wall cladding panel system that replicates real brickwork perfectly, at incredible speed.



FEATURES AND BENEFITS

- Panels are quick and versatile to install
- A wide range of thin brick veneers available
- Totally weatherproof
- Made from real brick slips
- Faux brick panels can be erected in all weathers
- Available in virtually any brick type