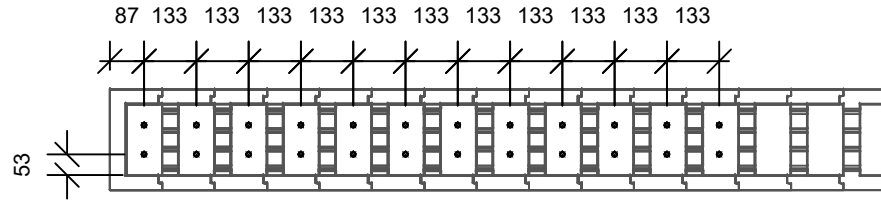


**Notes:**

The drawing shows two layers of reinforcement for illustration purposes only. The actual requirement for reinforcement on each project should be determined by the Structural Engineer.

Bar setting out based on nominal 12mmØ bars horizontal and vertical. Please see table below for alternative combinations



**PLAN OF TERMINAL END**

**NOTES:**

Stepoc 256 can accommodate two layers of reinforcement due to a modification in the design of the web, however as a general rule only a single layer will be required.

Please ensure all calculations are carried out using the correct values for the position of the reinforcement and in accordance with the relevant design standard.

Corner and End Details should be constructed first and any cut blocks incorporated towards the center of the walling section.

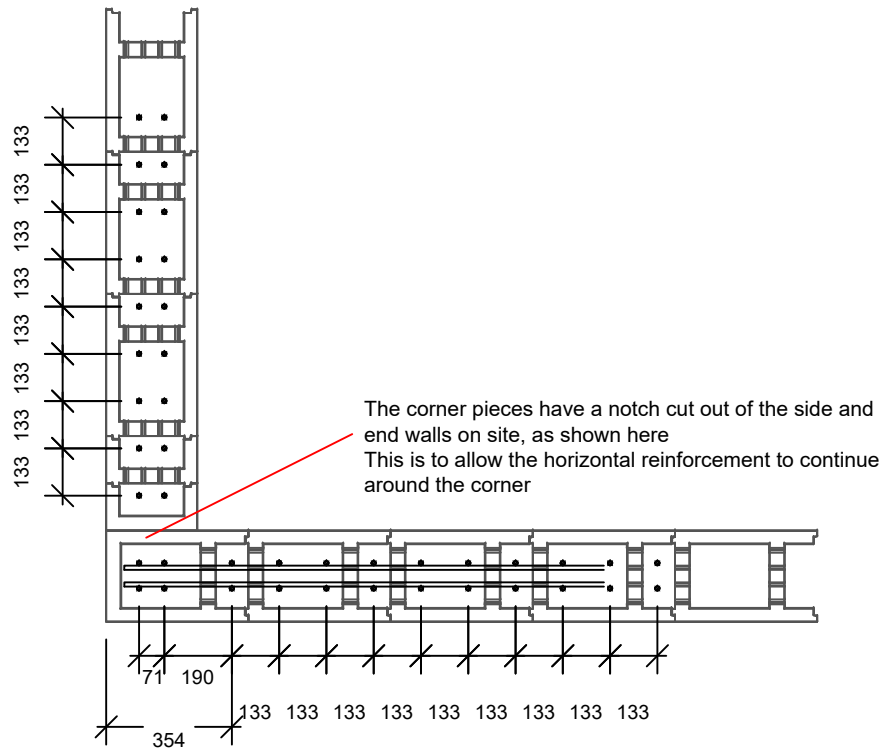
Movement joints should be incorporated at maximum 20m centers using the End Detail to finish and start the wall.

Reinforcement shown at minimum possible centers. Final design may allow for increased centers however these must still be multiples of 133mm.

Concrete should be to Structural Engineers specification but no less than C32/40 specification with a slump of no less than 150mm (S4) and a maximum aggregate size of 10mm. Cover to vertical reinforcement should be a minimum of 40mm.


Maximum pour height - 10 courses (2.25m)

Concrete infill - 0.15m³/m²



**PLAN OF CORNER**

Consideration should be given to the avoidance of creep when setting out the vertical reinforcing bars

Project 256mm Stepoc - Standard Details		 <b>Anderton</b>
Title REINFORCEMENT SPACING		
Drawing Number ST - 256 - REBAR		Rev D
Drawn By TJF	Date 21.05.2019	Scale NTS
Approved By	Date	Drawing is supplied by Anderton Concrete Ltd and must not be reproduced or shown to others without prior written consent.

Units 1 & 2, Cosgrove Business Park  
Soot Hill, Anderton  
Northwich  
Cheshire  
CW9 6AA  
Tel: 0333 234 3434  
www.andertonconcrete.co.uk

Anderton Concrete Ltd. 2019 ©