

What is ADvance, and who is it for?

ADvance is a pioneering educational initiative, developed for the broad global healthcare AD community

It aims to build momentum and framework within the healthcare community around early detection, referral, and subsequent early diagnosis of AD

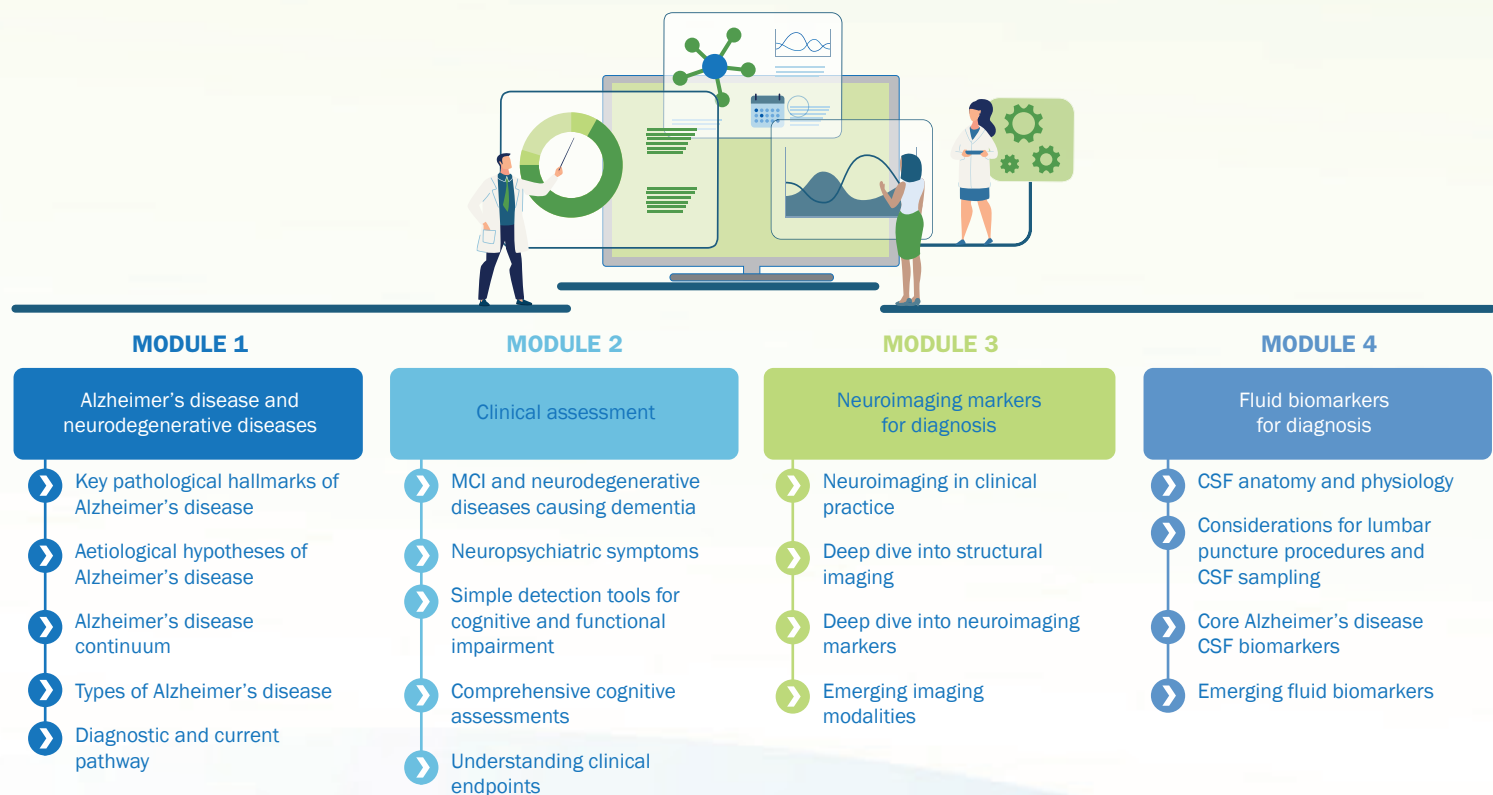


The educational outputs emerging from the core curricula will be **tailored to meet the educational needs across a variety of care settings, ranging from AD specialists to HCPs with limited knowledge of the evolving AD landscape**



What educational materials does ADvance comprise?

At the heart of the programme is a core set of comprehensive, educational modules which have been developed under the guidance of an **International Working Group** of experts in the AD field



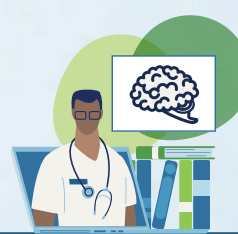
The ADvance modules are enriched by case studies helping to anchor the educational content around the early diagnosis of AD and provide clinical context

What does the International Working Group do?

The ADvance International Working Group comprises key medical experts in the field of AD across disciplines, including neurologists, psychiatrists, radiologists, and neuropsychologists



These experts provide regional insights and external validation of the materials, ensuring they are balanced and objective



International Working Group



UK ADvance medical education programme

On this website you can access CPD-accredited ADvance educational lectures and downloadable content that have been curated by a faculty of UK AD specialists. These medical educational resources were developed to enhance the scientific knowledge of neurologists, geriatricians and old-age psychiatrists involved in the diagnosis and care of patients with AD.

The ADvance medical educational programme has been funded and developed by Biogen.