



Let's Match!

We've received a transmission from the Mice Squad! They need your help connecting each fact file to its matching creature.



Discover more adventures from The Creature Cases!



A

I look like I'm wearing a mask! Sometimes I wash my food. By feeling it while it's wet, I can learn more about what I'm eating.

B

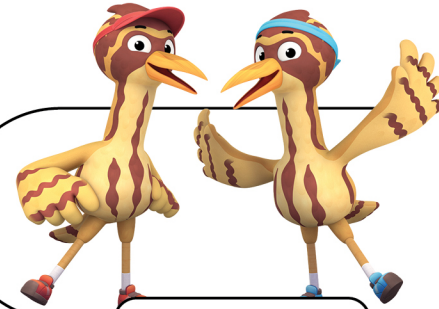
We talk to each other using our antennae and find our way around using our sense of smell. You can usually find us in big groups.

C

We're great at camouflage! Our brown and yellow feathers help us blend in with the grass and reeds.

D

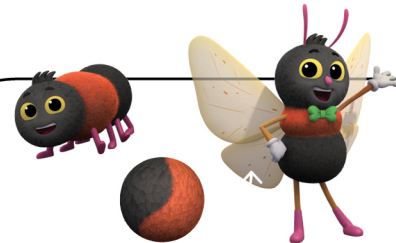
Even though I'm an insect, I'm covered in hair! When I've had enough to eat, I pupate. That means I make a cocoon and change into a moth.



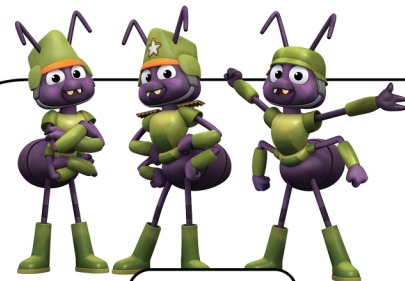
AMERICAN BITTERNS



RACCOON



WOOLLY BEAR CATERPILLAR & ISABELLA TIGER MOTH



ARMY ANTS

A

I use my pincers to attack and my venomous tail to defend myself. I'm mostly nocturnal, which means I sleep during the day.

B

Each one of us has a unique set of spots. We like to live in groups called clans and talk to each other through "whoop" sounds.

C

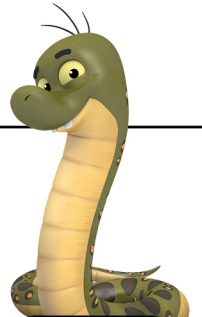
We have silvery patterns on our shiny skin. Our eggs need water to hatch, so we lay them in dry ponds and wait for the rain to cover them up.

D

I live in the Amazon rainforest in South America. While I can slither on the ground, I'm actually a lot better at swimming.



FLATWOODS SALAMANDERS



ANACONDA



SPOTTED HYENAS



SCORPION

ANSWER KEY: A. Raccoon; B. American bitterns; C. Army ants; D. Woolly bear caterpillar & Isabella tiger moth

ANSWER KEY: A. Scorpion; B. Spotted hyenas; C. Flatwoods salamanders; D. Anaconda