

SONIC
PRIME

Sonic Ring Toss

1



Gather supplies

- Small recycled pizza box
- Primer (optional) and blue paint
- Paintbrush
- Paper towel tube
- Pencil
- Craft knife (adults only)
- Scissors
- Hot glue and gun
- 5-10 gold dessert-sized paper plates (or plain paper plates and gold paint)
- Sonic picture and glue stick (optional)

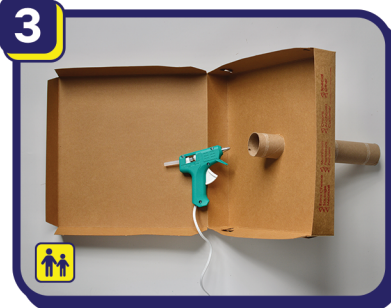
2



Measure and Cut

Find the center of the box by drawing two diagonal lines from corner to corner to make an 'X'. Place the tube at the center and trace it. Use the craft knife to cut a hole to fit the tube snugly. Push the tube down into the hole until it hits the box bottom.

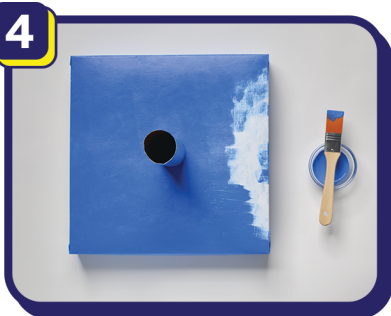
3



Glue

Open the box and hot glue the tube from underneath at the hole and along the tube's bottom edge. Close the box and adjust the tube to straighten it, if needed, before the glue sets. Glue the sides closed.

4



Paint

Prime (optional, for brighter color) the top and sides of the pizza box and allow it to dry. Paint it blue and allow it to dry.

5



Cut and glue

Cut the centers out of the paper plates to make rings. Glue two rings together to make them heavier if you like.

6



Decorate

Decorate the top of the tube with tape. Use a glue stick to adhere the Sonic picture to the base.



Ask an adult help
with this project.