
Aurora 1.0.20.0 E-Plex Service Setup

Introduction

This updated version of Aurora introduces new certificates for enhanced security between the dormakaba HMS and E-Plex Services. This also serves to strengthen secure communications with existing and next generation products with the Aurora software client.

IMPORTANT – As of Aurora 1.0.20.0, all previous E-Plex Services will need to be removed and new E-Plex services will need to be installed to be able to work with Aurora 1.0.20.0 or higher. Please observe the following before continuing:

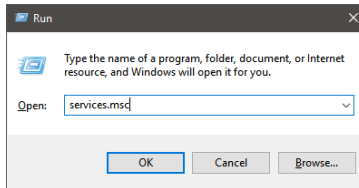
- This new installation process requires an Administrator level password
- This installation requires Microsoft .NET 4.7.2 (or higher). The installation program will install, if required. Copies of required files are located on the Aurora Software 1.0.20.0 DVD
- Certificate setup is completed on the E-Plex Service server (if different from the database server)
- Certificates are required with Aurora version 1.0.20.0 when using E-Plex products

Current E-Plex Services

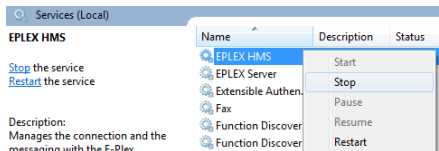
Previously running E-Plex Services must be stopped and uninstalled prior to creating certificates.

Follow these steps to stop and uninstall current E-Plex Services:

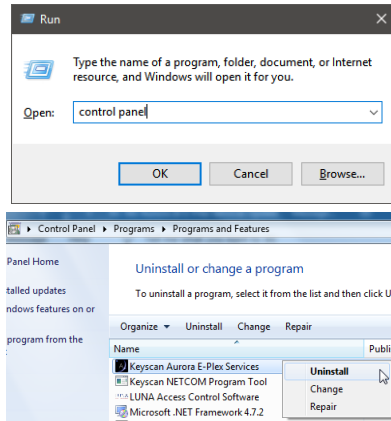
- 1) Stop existing E-Plex Services by opening a run command (Windows Key + R) and run **services.msc**.



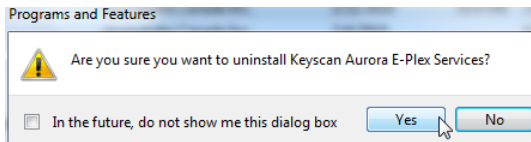
- 2) From the Services list, locate EPLEX HMS & EPLEX Server. For each, right click and select **Stop**.



- 3) To uninstall the existing E-Plex Services, open a run command (Windows Key + R) and run **control panel**. From there, navigate to Programs and Features > Uninstall or change a program. Locate Keyscan Aurora E-Plex Services, right click and select **Uninstall**.



- 4) Select **Yes**. The Windows Installer will begin uninstalling the E-Plex Services (this may take several minutes). Once uninstalled, the program should no longer appear in the list of programs (detailed in the previous step).



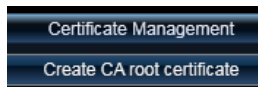
- 5) Create an Aurora database backup before proceeding.
- 6) Update the existing Aurora Software to 1.0.20.0 via the Aurora Update Process from: dormakaba.com/us-en/knowledge-center/software-downloads-updates/keysca-aurora-software-updates. Locate **Download Aurora Software Update (Version 1.0.20.0)** and select the download button.
- 7) Shut down the Aurora software after upgrading to 1.0.20.0. Right-click the Aurora software icon and select **Run as Administrator**. Start the Aurora software.

E-Plex Certificate Creation

Public and Private certificates must be created prior to installing new E-Plex Services. Without proper setup, E-Plex Services will not connect to the Aurora database.

Follow these steps to create an E-Plex certificate:

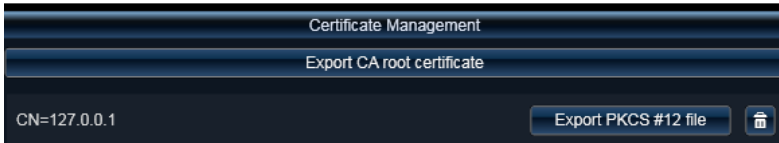
- 1) Within the Aurora software client, navigate to Application Management > Application Utilities > Security (tab). Select **Create CA root certificate**.



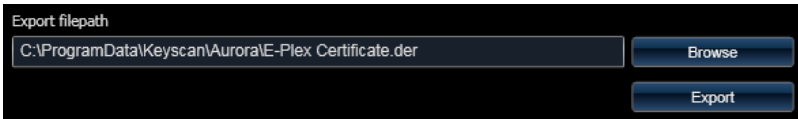
- 2) At the bottom of the screen, add the server IP (where E-Plex Services are installed) or 127.0.0.1 if the E-Plex service is local to the database PC. Select **Create new certificate**.



- 3) New information will appear on screen after creating a new certificate. Select **Export CA root certificate**.



- 4) It is important to choose a safe location when exporting certificates. Select **Browse** to navigate through your computer to the desired (safe) location. Select **Export** when a location is chosen.



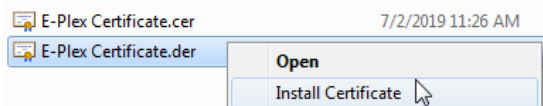
- 5) Next, Select **Export PKCS #12 file**. Follow the same file path chosen in the previous step (Step 4). Input a strong **Import password**; a password is required for adding the private certificate to the Microsoft Console. Select **Export** when a location is chosen.



E-Plex Certificate Implementation

*.DER Certificate

- 1) Open the certificate location (from Step 4 of the previous section) and right click on the *.DER certificate. Select **Install Certificate**. Select **Local Machine** and then **Next**.



Welcome to the Certificate Import Wizard

This wizard helps you copy certificates, certificate trust lists, and certificate revocation lists from your disk to a certificate store.

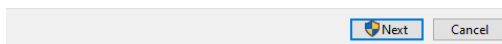
A certificate, which is issued by a certification authority, is a confirmation of your identity and contains information used to protect data or to establish secure network connections. A certificate store is the system area where certificates are kept.

Store Location

☐ Current User

☒ Local Machine

To continue, click Next.



2) Assign the certificate to the Trusted Root Certification Authorities Store. Select **Next** and then **Finish**.

Certificate Store

Certificate stores are system areas where certificates are kept.

Windows can automatically select a certificate store, or you can specify a location for the certificate.

☐ Automatically select the certificate store based on the type of certificate

☒ Place all certificates in the following store

Certificate store:

Trusted Root Certification Authorities

Browse...

Completing the Certificate Import Wizard

The certificate will be imported after you click Finish.

You have specified the following settings:

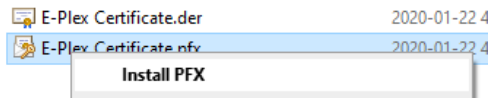
| | |
|------------------------------------|--|
| Certificate Store Selected by User | Trusted Root Certification Authorities |
| Content | Certificate |

NextCancel

FinishCancel

***PFX Certificate**

- 1) Open the certificate location (from Step 5 on Page 2) and right click on the *.PFX certificate. Select **Install PFX**. Select **Local Machine** and then **Next**.



Welcome to the Certificate Import Wizard

This wizard helps you copy certificates, certificate trust lists, and certificate revocation lists from your disk to a certificate store.

A certificate, which is issued by a certification authority, is a confirmation of your identity and contains information used to protect data or to establish secure network connections. A certificate store is the system area where certificates are kept.

Store Location

☐ Current User

☒ Local Machine

To continue, click Next.

NextCancel

- 2) Select **Next**. A password prompt will appear, enter the Password from Step 5 on Page 2. Select **Next**.

File to Import

Specify the file you want to import.

File name:

Note: More than one certificate can be stored in a single file in the following formats:

- Personal Information Exchange- PKCS #12 (.PFX, .P12)
- Cryptographic Message Syntax Standard- PKCS #7 Certificates (.P7B)
- Microsoft Serialized Certificate Store (.SST)

Private key protection

To maintain security, the private key was protected with a password.

Type the password for the private key.

Password:

☐ Display Password

Import options:

☐ Enable strong private key protection. You will be prompted every time the private key is used by an application if you enable this option.

☐ Mark this key as exportable. This will allow you to back-up or transport your keys at a later time.

☐ Protect private key using virtualized-based security(Non-exportable)

☒ Include all extended properties.

- 3) Assign the certificate to the Personal Store and select **Next**, then **Finish**.

Certificate Store

Certificate stores are system areas where certificates are kept.

Windows can automatically select a certificate store, or you can specify a location for the certificate.

☐ Automatically select the certificate store based on the type of certificate

☒ Place all certificates in the following store

Certificate store:

Completing the Certificate Import Wizard

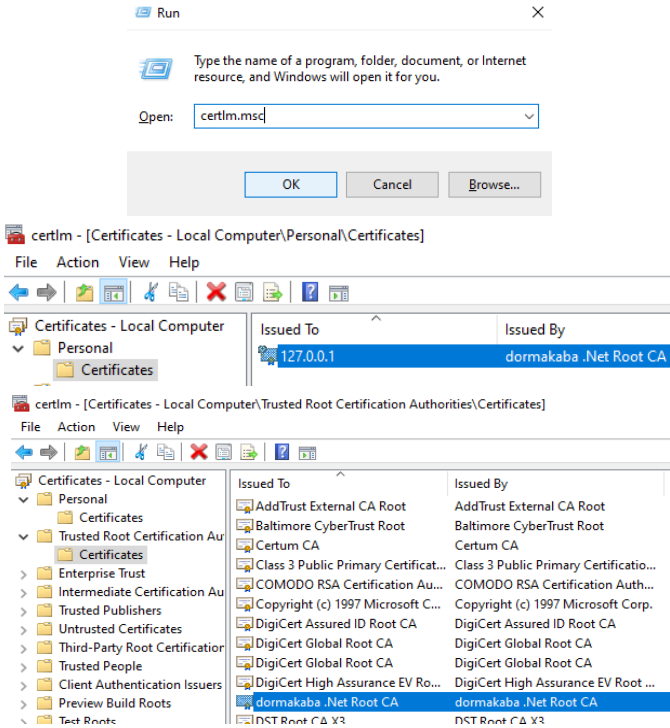
The certificate will be imported after you click Finish.

You have specified the following settings:

| | |
|------------------------------------|---|
| Certificate Store Selected by User | Personal |
| Content | PFX |
| File Name | C:\Program Files (x86)\Keyscan\E-Plex Certificate.pfx |

Verifying Certificates

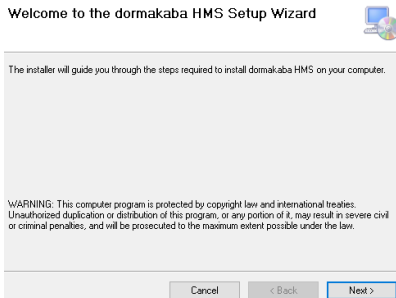
To verify the certificates, open a run command (Windows Key + R). From the Open drop-down menu, select **certlm.msc** (Windows 10 only). Verify both certificates are present and installed correctly.



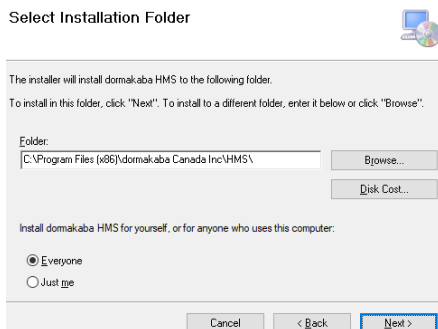
Install E-Plex Services

The final step in this Aurora software update process is to download the new E-Plex Services.

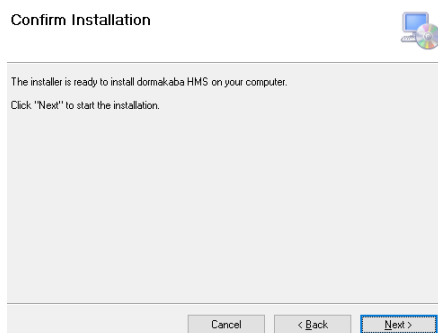
- 1) From the website, download the two separate installation packages (dormakaba HMS and E-Plex Server).
- 2) Run the dormakaba HMS Installer.msi file. The Setup Wizard will pop up. Select **Next**.



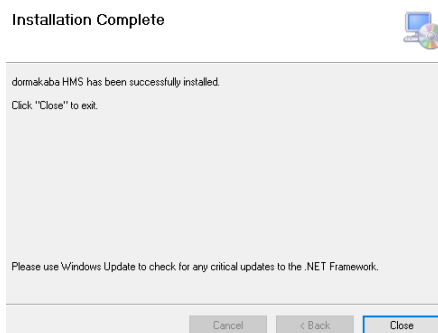
- 3) Select the destination folder with the **Browse** button. Once a pathway is chosen, select **Next**.



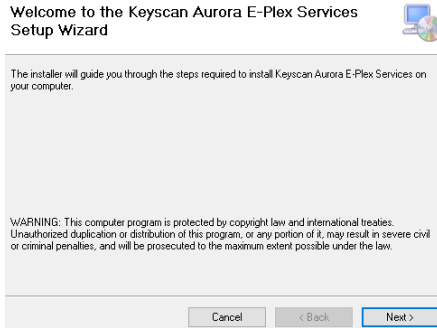
- 4) Select **Next**.



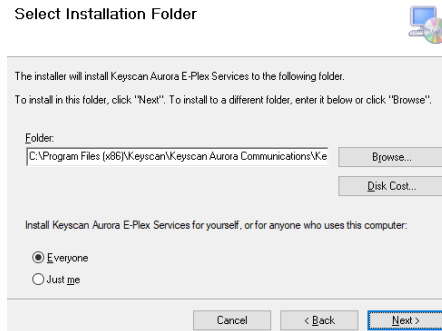
- 5) Complete the installation by selecting **Close**.



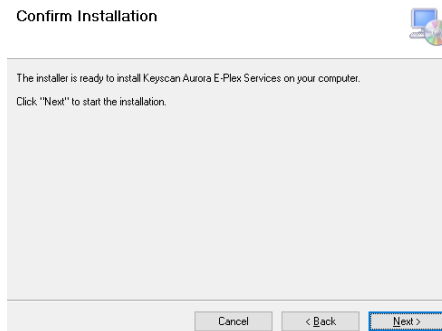
- 6) Run the E-Plex Server Installer.msi file. The Setup Wizard will pop up. Select **Next**.



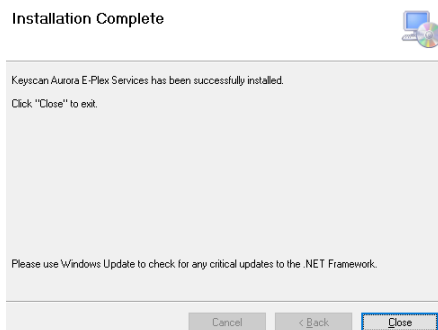
- 7) Select the **Browse** button to identify the installation folder location. Once a path is chosen, select **Next**.



- 8) Select **Next** to confirm the installation.



- 9) Select **Close** to complete the installation.



dormakaba Canada Inc.

901 Burns Street East, Whitby, Ontario, Canada L1N 0E6

1-888-539-7226 (toll free Canada/USA)

(905) 430-7226 (elsewhere)

www.dormakaba.ca

Technical Support

Hours: 9:00 AM to 6:30 PM EST, Monday – Friday

Aurora 1.0.20.0 E-Plex Service Setup – KD50029-E-0923

9 | dormakaba Canada Inc. – KD50029-E-0923