



Peach Azalea Blanket

FINISHED MEASUREMENTS

Width: 42¾"

Length: 69¾"

MATERIALS

Premier® Yarns Anti-Pilling® Everyday®

Worsted (100% Anti-Pilling Acrylic; 3.5oz/100g, 180yds/165m)

- A: 100-68 Aran – 2 balls
- B: 100-79 Fawn – 5 balls
- C: 100-90 Dogwood – 2 balls
- D: 100-86 Walnut – 3 balls
- E: 100-89 Peach Blossom – 3 balls
- F: 100-74 Clay – 3 balls

Hook: US Size J-10 (6 mm) *or size needed to obtain gauge*

Notions: Tapestry needle, 4" strip of cardboard (for making tassels)

GAUGE

14 sc x 14 rows = 4"

Save time, check your gauge.

Skills/techniques used in this pattern:

- Chain and single crochet stitches.
- Reading a color chart.
- Changing colors with the tapestry crochet method.
- Making tassels.

PATTERN NOTES

To change color, work last stitch of old color to last yarn over. Yarn over with new color and draw through all loops on hook to complete the stitch. Work over the new strand of old color as you work each chart row. When working on RS of panel, carry yarn in back and when working on WS of panel, carry the yarn

in front to keep the 'carried' yarn to the WS at all times. When working from chart, begin at bottom of chart reading odd-numbered rows from right to left and even-numbered rows from left to right.

Work over end of yarn as next row progresses to weave in ends as you go.

BLANKET

With A, ch 151.

Row 1 (RS): Sc in 2nd ch from hk and in each ch across, turn – 150 sc.

Rows 2-12: Ch 1, sc in each st across, turn. Fasten off. Join B.

Rows 13-232: Work in single crochet and change yarn color following Chart 1 – Chart 11 until all rows of chart have been completed. Fasten off. Join A.

Rows 233-244: Ch 1, sc in each st across, turn. Fasten off.

FINISHING

Weave in ends.

Tassels (make 4)

Cut a 48" length of yarn of F and thread it in tapestry needle, set aside.

Wrap F around cardboard 50 times. Insert threaded needle under all strands at upper edge of cardboard. Pull tightly and knot securely near strands. Cut yarn loops at lower edge of cardboard.

Trim tassel ends evenly. Thread tassel with long length and hang on each corner.

Peach Azalea Blanket

By Premier® Yarns Design Team

project continued

Abbreviations

- beg** begin(ning)
- ch** chain
- hk** hook
- rem** remain(ing)
- rep** repeat
- rnd(s)** round(s)
- RS** right side
- sc** single crochet
- st(s)** stitch(es)
- WS** wrong side

Chart Key

	A		Repeat
	B		
	C		
	D		
	E		
	F		

Chart 1

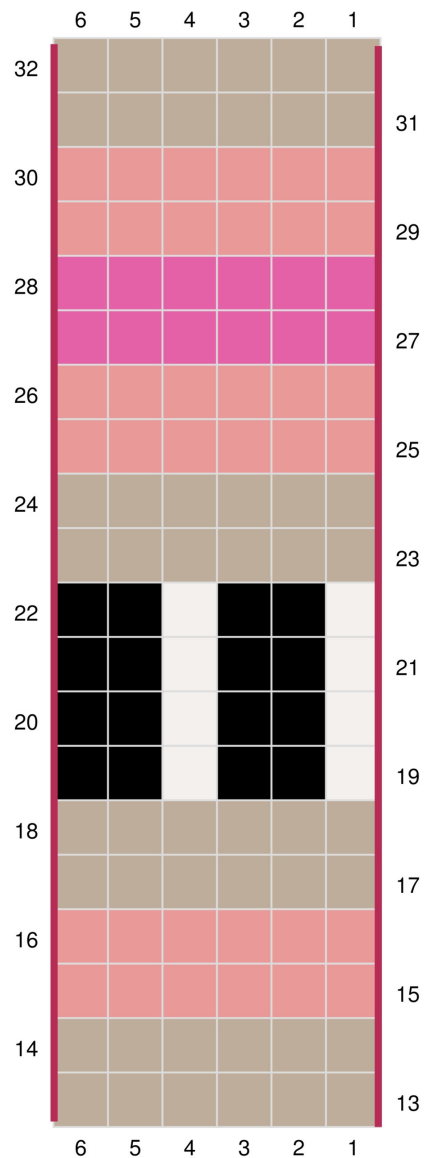
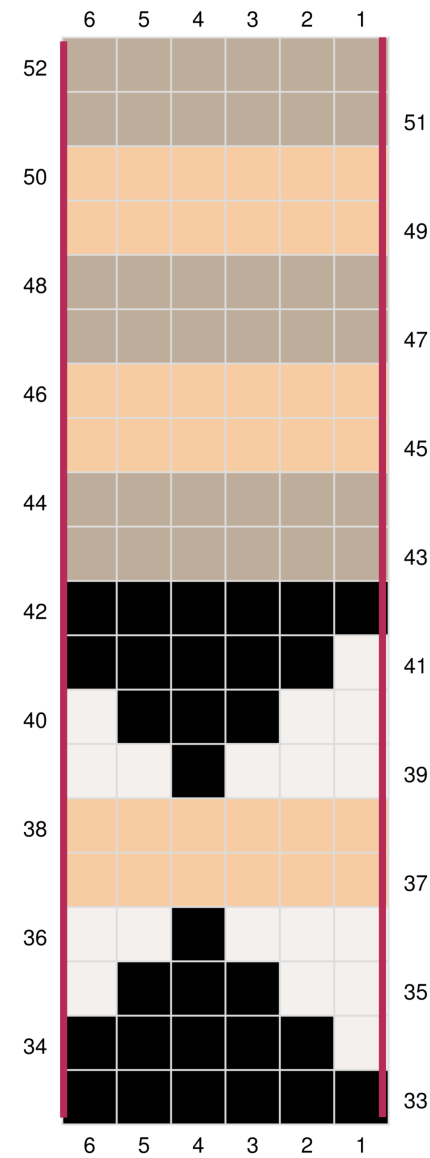


Chart 2



Peach Azalea Blanket

By Premier® Yarns Design Team

project continued

Chart 3

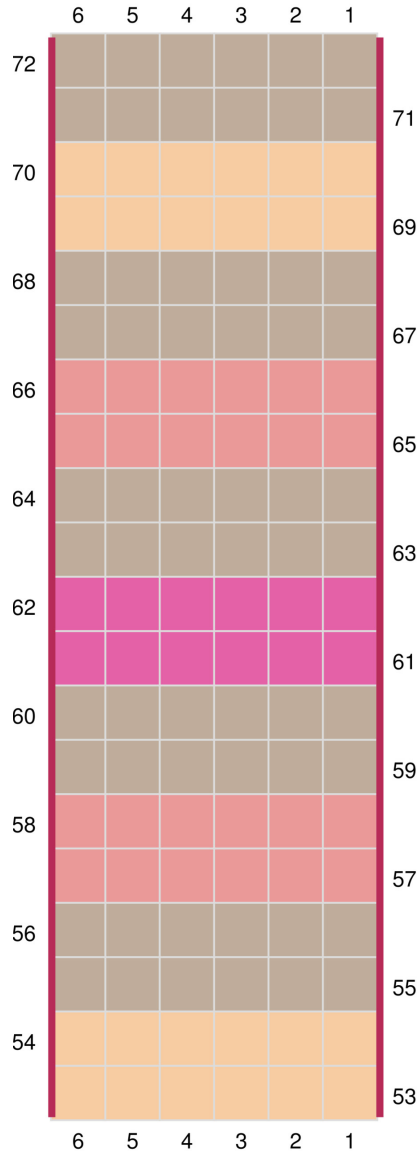


Chart 4

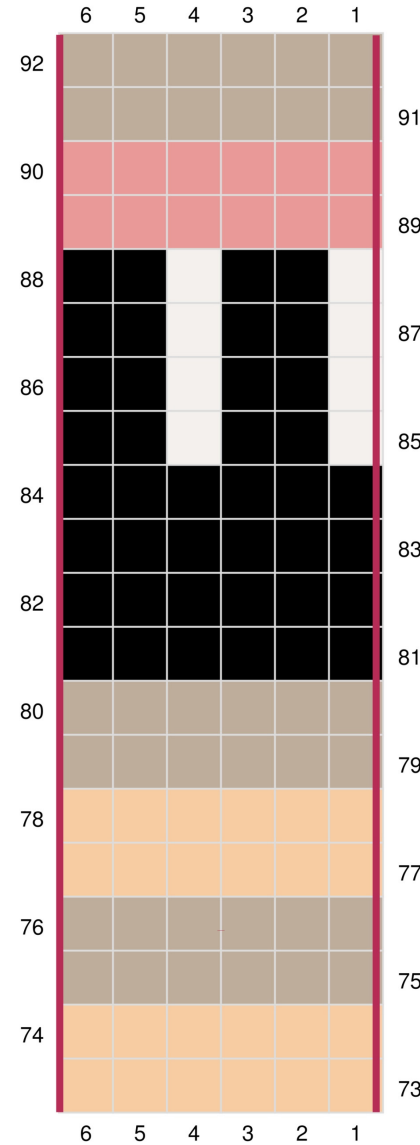
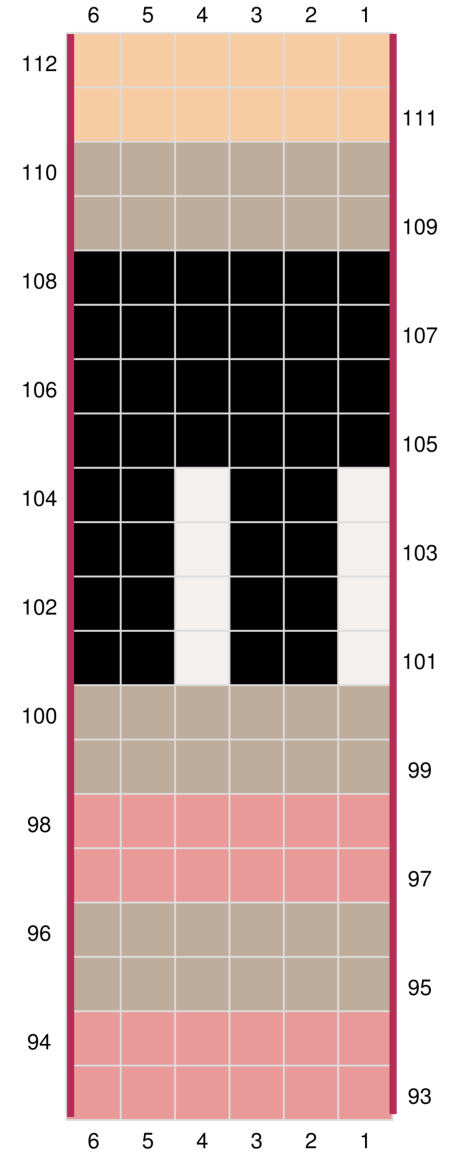


Chart 5



Peach Azalea Blanket

By Premier® Yarns Design Team

project continued

Chart 6

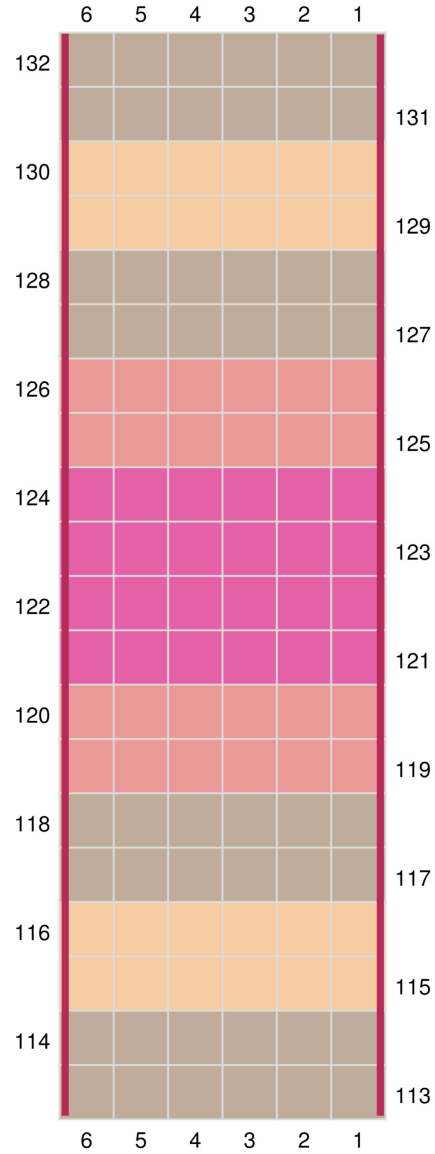


Chart 7

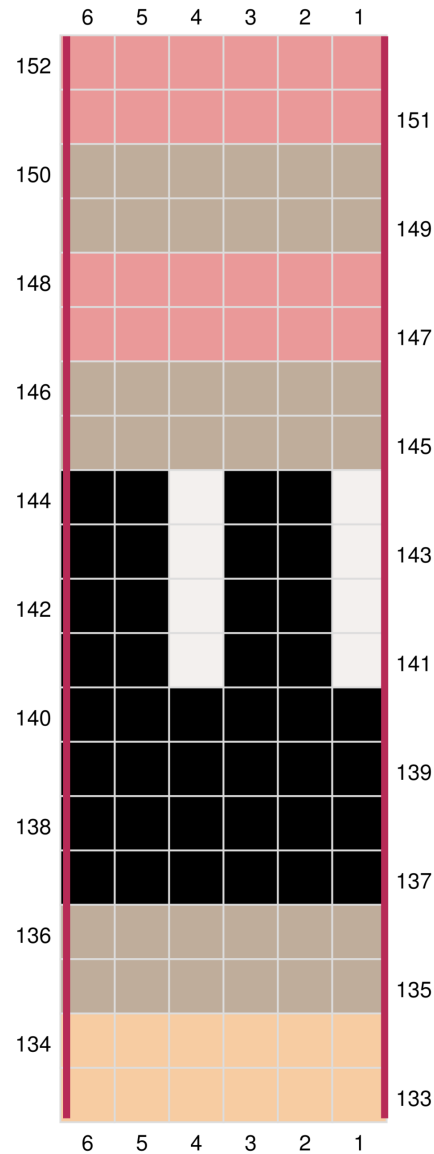
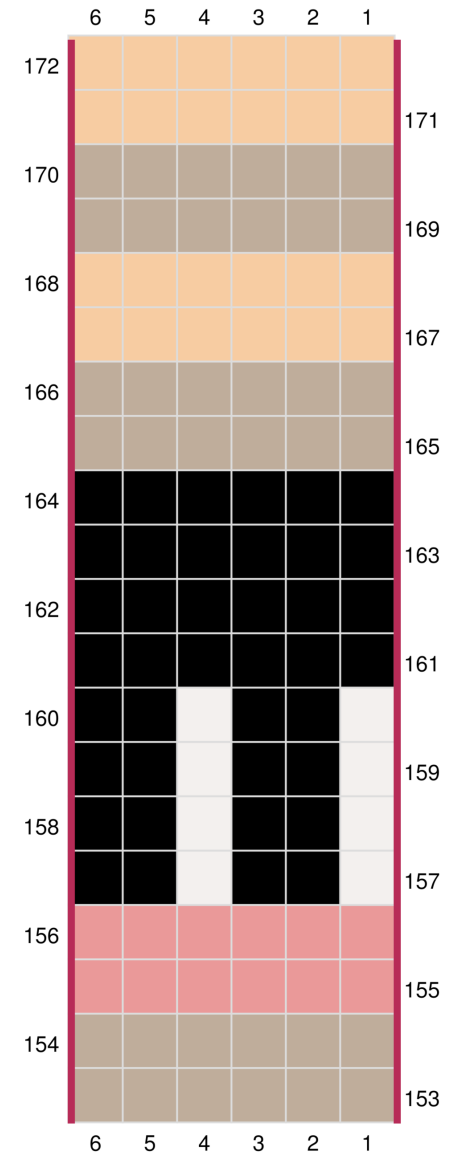


Chart 8



Peach Azalea Blanket

By Premier® Yarns Design Team

project continued

Chart 9

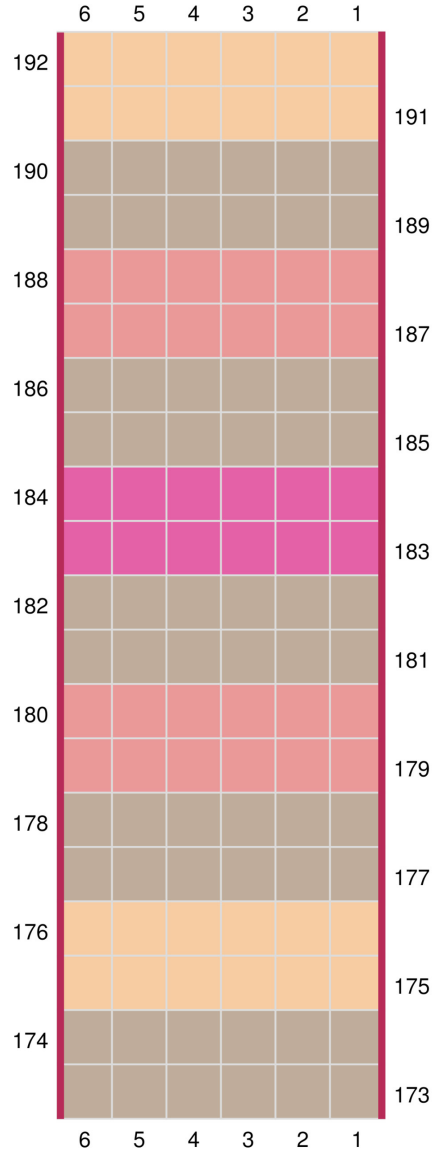


Chart 10

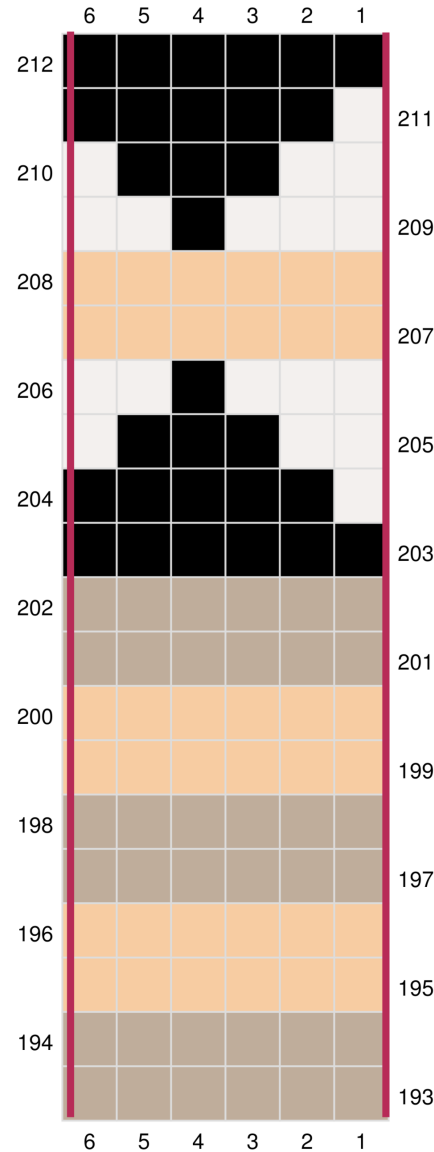


Chart 11

