



Giga Granny Mini Tote

FINISHED MEASUREMENTS

Width: 8"

Length: 8" (without Straps)

MATERIALS

Premier® Yarns Sweet Roll® Bold (100% Acrylic; 7 oz/200 g, 109 yds/100 m)

- 2120-01 Rainbow or
2120-04 Neon Pop – 1 ball

Hook: US Size L-11 (8 mm) *or size needed to obtain gauge*

Notions: Tapestry needle

GAUGE

Rnds 1-5 of Granny Square = 8"

Save time, check your gauge.

Skills/techniques used in pattern:

- Making a Magic Ring.
- Single crochet, half double crochet and chain stitches.
- Working in the round.
- Working in back and front loops of stitches.
- Whipstitch.

STITCH GUIDE

Granny Square

Begin with **Magic Ring**.

Rnd 1: Ch 4 (counts as hdc + ch 2 here and throughout), *3 hdc in ring, ch 2; rep from * 2 more times, 2 hdc, join with sl st in second ch of beg ch-4.

Rnd 2: Ch 4, 3 hdc in same sp, ch 1, *(3 hdc, ch 2, 3 hdc) in ch-2 sp, ch 1; rep from * 2 more times, 2 hdc in same sp as beg hdc, join with sl st to second ch of beg ch-4.

Rnd 3: Ch 4, 3 hdc in same sp, ch 1, 3 hdc in ch-1 sp, ch 1, *(3 hdc, ch 2, 3 hdc) in ch-2 sp,

ch 1, 3 hdc in ch-1 sp, ch 1; rep from * 2 more times, 2 hdc in same sp as beg hdc, join with sl st to second ch of beg ch-4.

Rnd 4: Ch 4, 3 hdc in same sp, ch 1, (3 hdc in ch-1 sp, ch 1) 2 times, *(3 hdc, ch 2, 3 hdc) in ch-2 sp, ch 1, (3 hdc in ch-1 sp, ch 1) 2 times; rep from * 2 more times, 2 hdc in same sp as beg hdc, join with sl st to second ch of beg ch-4.

Rnd 5: Ch 1 (does not count as a st throughout), sc in same sp, *sc in corner ch-2 sp, (sc in next 3 hdc, sc in next ch-1 sp) 3 times, sc in next 3 hdc; rep from * around, omitting last sc on on last rep, join to beg sc with a sl st – 64 sc. Fasten off.

Magic Ring: Wrap yarn around your middle finger twice, leaving a 6" tail. Insert hook under both strands and pull up a loop. Ch 1 and beg working directly into center of ring. This ring can be tightened later by pulling on the yarn tail.

PATTERN NOTES

The main section of this Bag is made by crocheting 2 Granny Squares. The sides and bottom sections are made by crocheting rows of single crochet stitches directly onto 3 sides of each Granny Square. The 2 Granny Squares are then seamed together at the bottom and sides. The straps are crocheted directly onto the opening after seaming.

BAG

Main Bag

Make 2 **Granny Squares**.

Sides

With RS facing, join yarn with a sl st in any

Giga Granny Mini Tote

By Liz Salazar for Premier® Yarns

project continued

corner sc of first Granny Square.

Row 1: Ch 1, sc in same st, working in back loops only, sc in each of next 48 sc, (around 3 sides of Granny Square), turn – 49 back loop only sc.

Rows 2-3: Ch 1, sc in each sc across, turn. Fasten off, weave in ends.

FINISHING

Position **Granny Squares** together with wrong sides facing out. Working into back loops of sc stitches of **Granny Square** closest to you and front loops of sc stitches of **Granny Square** furthest from you, whipstitch 3 sides of **Granny Squares** together.

Turn piece right side out.

Straps

Join yarn with a sl st in corner sc of first **Granny Square**.

Rnd 1: Ch 1, sc in same sc, *sc in next 3 sc, ch 16, sk next 9 sc, sc in next 4 sc, work 7 sc in row ends of first Side of Bag*, sc in corner sc of next **Granny Square**, rep from * to * one more time, join to beg sc with a sl st.

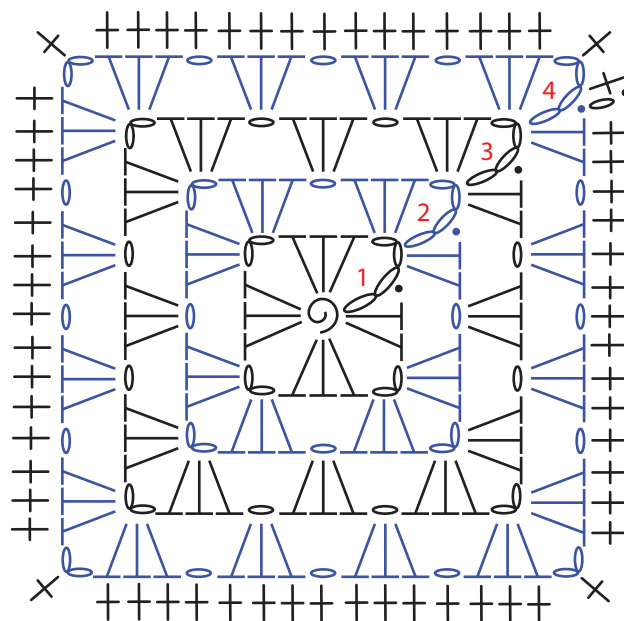
Rnd 2: Ch 1, sc in each sc around, working 1 sc in 16 chs of each Strap, join to beg sc with a sl st. Fasten off, weave in rem ends.

Abbreviations

beg	beginning
ch(s)	chain(s)
hdc	half double crochet
rem	remain(ing)
rep	repeat(ing)
RS	right side
sc	single crochet
sl st	slip stitch
sk	skip
sp(s)	space(s)
WS	wrong side



Granny Square Chart



Key

- ch
- sl st
- magic ring
- hdc
- sc