

Get set to paint!
A PALM BRANCH

With
Jenna Rainey

COLORS

1



Cobalt Blue

2



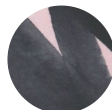
Alizarin
Crimson

3



Lemon Yellow

4



Paynes Grey

OTHER SUPPLIES



- Daler-Rowney Aquafine™ Watercolor Travel-Set
- Canson XL™ Cold Press Watercolor Paper

BRUSHES

Heritage™ Round #12



1

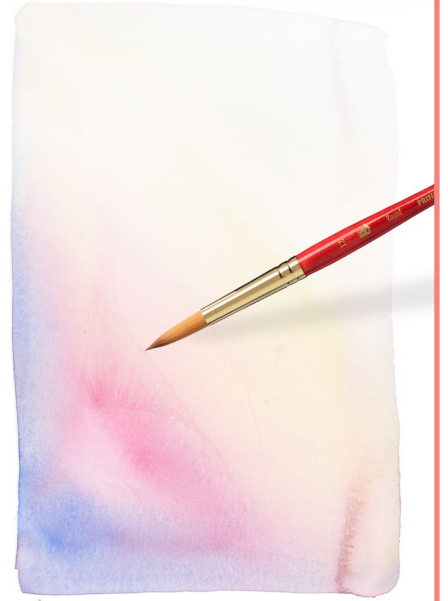
STEP



Load up your size 12 brush with lots of water and paint the bottom left hand corner with just water. As you work your way up and across the entire sheet of paper, start punching in color throughout the sky. Starting with Cobalt Blue Hue for the bottom corner. Watch the water and color bloom together.

2

STEP



As you continue working your way across the paper with water, start punching in more sunset colors like Alizarin Crimson Hue and Lemon Yellow, until you've covered your entire sheet of paper with color and water.

3

STEP



After your background has dried, load up your size 12 brush with Paynes Grey. Paint in a thin "C" curve for the main stem of the palm branch, then add in leaves! Using a compound stroke and your brush at a 75 degree angle away from the paper, use little to no pressure first for a thin stroke, then apply pressure for the belly of the leaf. Release that pressure and taper the leaf off at the end for a thin tip. Add leaves all around the main stem, overlapping and folding throughout!

DONE!

