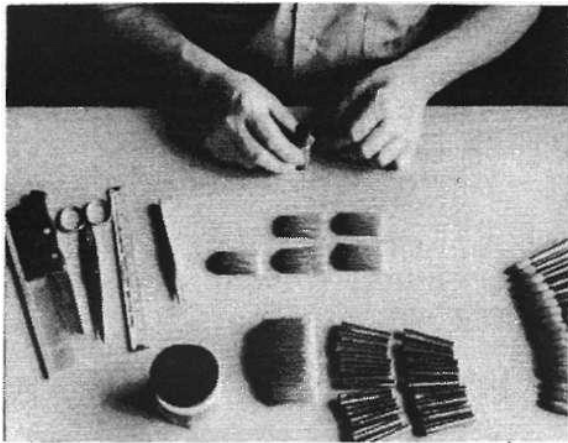




Utrecht Art Supplies

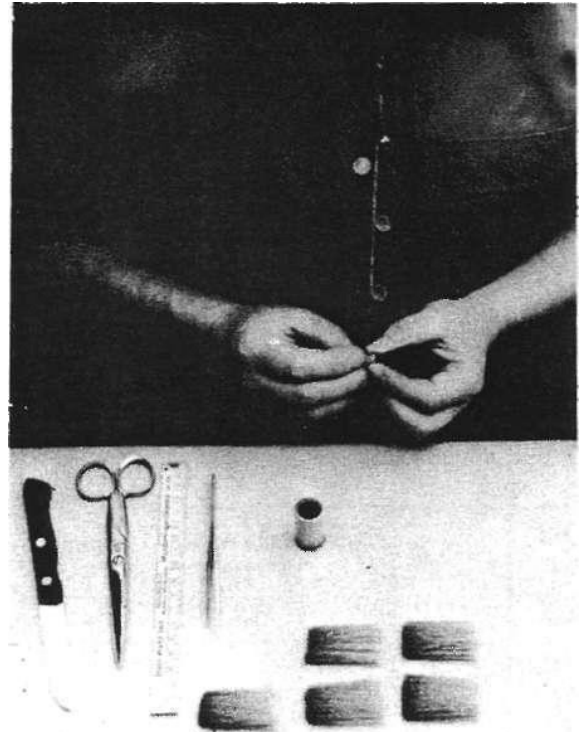
Company History: Vintage Utrecht Brush Craft

These photos from the Utrecht Linens Catalog ca. 1960 illustrate the process of crafting our Rhenish Artists' brushes. Utrecht Rhenish Brushes are still hand-made in Germany in a process that has changed very little over the years!



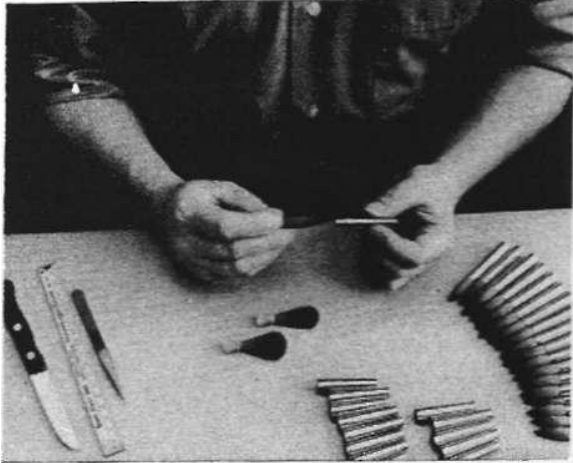
Interlocking and doming:

"Interlocked" filaments (brush hairs or bristles) are assembled with the natural curve facing in toward the center of the tuft to ensure good shape retention. Doming distributes the flags uniformly around the tuft for even, smooth paint release and soft, velvety paint surfaces.



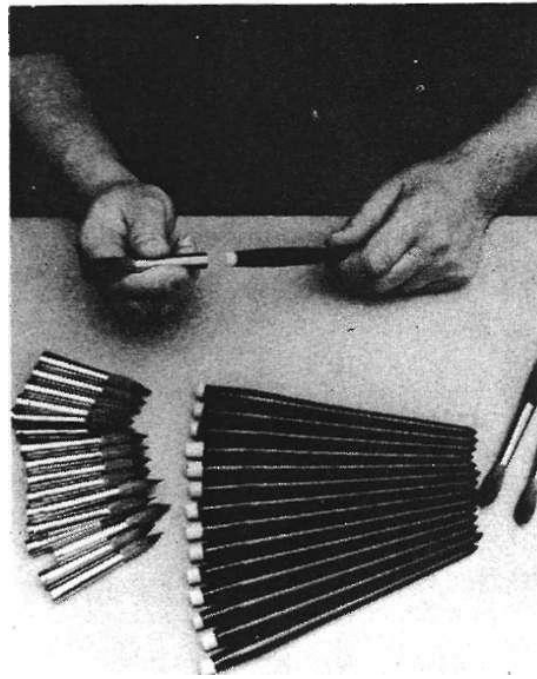
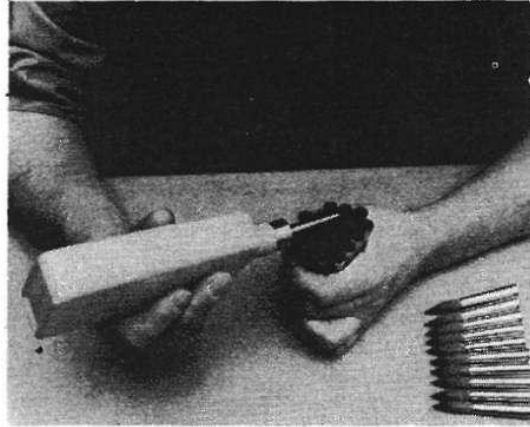
Tying the tufts:

Tufts must be securely tied to prevent loss of hairs and to retain the original shape. The tufts of lower quality brushes are often not tied, but simply glued in place, leading to dropped hairs.



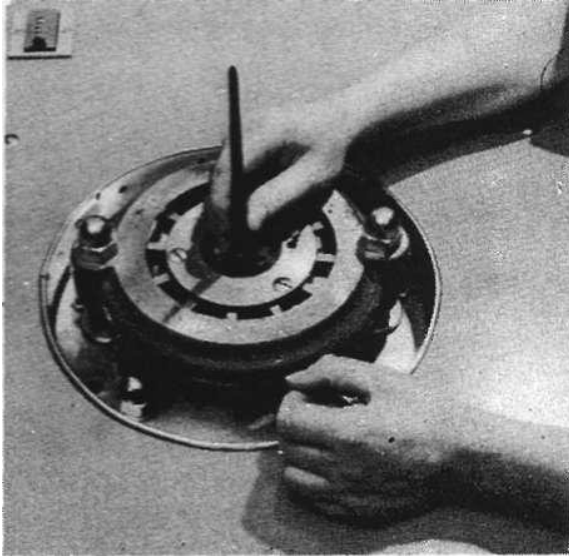
Inserting tufts into ferrules:

Tufts must be carefully inserted into brush ferrules. The tufts of high quality artist's brushes often extend into the ferrule as far as the length of the exposed brush head! Lower quality brushes include a wooden plug to take up excess space left by short, clipped hairs.



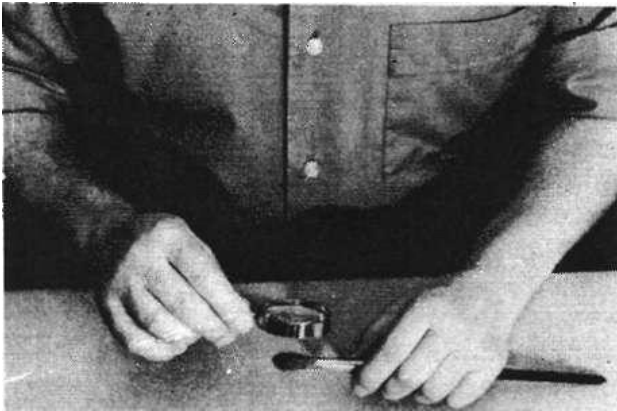
Attaching the Handle:

Each ferrule is glued to a lacquered hardwood handle prior to crimping.



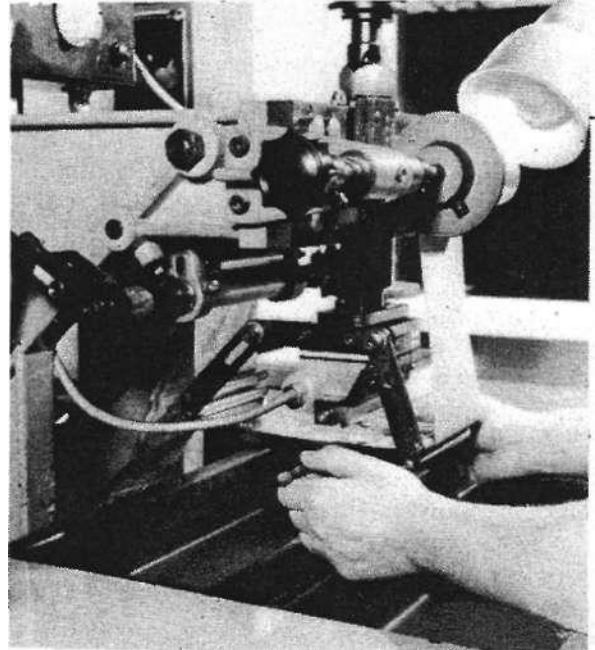
Crimping ferrules:

Brush handles can swell and shrink from immersion in water and solvents. Ferrules must be double or triple crimped for secure attachment. Only seamless ferrules should be used for professional-quality brushes.



Inspection:

Skilled craftsmen inspect brushes for defects such as malformed tufts, broken hairs and damaged ferrules.



Stamping handles:

Finished brushes are embossed with size, series and brand.

Questions? [Ask the Expert](#)

Intended for reference only. Observe all package instructions. Dick Blick Holdings/Utrecht Art Supplies is not responsible for any damage to personal property that may result from use of the information presented herein. © Copyright 2013 Dick Blick Holdings Inc. All rights reserved.