



Free Crochet Pattern

# C2C Pencil Blanket



Pattern #-

M23193 WE

Yarn-

Lion Brand® Wool-Ease®

## SKILL LEVEL – INTERMEDIATE

## SIZES

About 39 x 75 in. (99 x 190.5 cm)

## MATERIALS

- LION BRAND® WOOL-EASE® (Art. #620)
  - #104 Blush Heather 4 balls (A)
  - #152 Oxford Grey 2 balls (B)
  - #087 Arrowwood 12 balls (C)
  - #098 Natural Heather 2 balls (D)
  - #153 Black 1 ball (E)
- LION BRAND® large-eyed blunt needle



## ADDITIONAL MATERIALS

Crochet hook size H-8 (5 mm)

## GAUGE

10 (chain 3, 3 dc) squares = about 5 in. (12.5 cm).

BE SURE TO CHECK YOUR GAUGE.

## STITCH EXPLANATION

**dc2tog (dc 2 sts together)** (Yarn over, insert hook in next st and draw up a loop, yarn over and draw through 2 loops) twice, yarn over and draw through all 3 loops on hook – 1 st decreased.

## TECHNIQUE EXPLANATION

**C2C** The Corner-to-Corner (C2C) technique of crocheting is made by starting in one corner of a Chart (typically the lower right corner) and following the Chart row by row diagonally to the other corner (typically the top left corner).

### How to start your C2C Blanket

**Row 1:** Starting in the lower right corner of the Chart. Chain 6. DC in 4th chain from hook. DC in last two chains. You now have a chain-3 space and a total of 3 DC stitches. This completes your first square and Row 1.

For thousands of free patterns, visit our website [www.LionBrand.com](http://www.LionBrand.com)

To order visit our website [www.lionbrand.com](http://www.lionbrand.com) or call: 877-412-9772 any time! Every effort has been made to produce accurate and complete instructions. We cannot be responsible for variance of individual makers, human error, or typographical mistakes.

©2023 Lion Brand Yarn Company, all rights reserved.

**Row 2:** Chain 6. DC in 4th chain from hook. DC in last two chains. Turn your work. At this point turning consists of just flipping over the first square. Slip stitch in the chain-3 space of the first square. Chain 3. Make 3 DC in the same chain-3 space. This completes your second two squares and Row 2.

**Increase Rows** The first part of the Chart is worked by making an increase at the beginning of each row. You will start each row by chaining 6, making a DC in the 4th chain from hook and then a DC in each of the remaining 2 chains, turn, and continue making squares as you have been doing (Slip stitch in chain-3 space then chain 3 and work 3 DC in the same chain-3 space).

**Increase and Decrease Rows** The second part of the Chart is worked by making increases on one edge and making decreases on the other edge. The number of squares in each row remains the same (even) in this part.

**How to Decrease at the Beginning of a Row** Slip stitch in the 3 double crochet stitches of last square made. Slip stitch in the chain-3 space of last square made. Chain 3. Make 3 DC in the same chain-3 space. Continue making squares as you have been doing (Slip stitch in chain-3 space then chain 3 and work 3 DC in the same chain-3 space).

**How to Decrease at the End of a Row** Make squares as you have been doing up to the last chain-3 space. Slip stitch in the last chain-3 space but do not work chain 3 and 3 DC in that last chain-3 space. Proceed with the next row.

**Decrease Rows** The third part of the Chart is worked by making decreases on both edges. At the beginning of each row, turn your work and slip stitch across the 3 DC's of the last square made. Slip stitch in the chain-3 space then chain 3 and work 3 DC in the same chain-3 space. Continue making squares as you have been doing (Slip stitch in chain-3 space then chain 3 and work 3 DC in the same chain-3 space). At the end of the row, end with a slip stitch in the last chain-3 space, do not work chain 3 and 3 DC in that last chain-3 space.

**How to Change Colors** To attach a new color you will pull the new color yarn through as you make your slip stitch in the chain-3 space. Do not fasten off the old color. Leave the strand hanging and still attached to the ball.

By not cutting your yarn each time you change colors, you will have fewer loose ends to weave in later. Just keep the balls not being used on the wrong side of your work. You can easily carry your yarn strand up from the previous row. Take the yarn strand and pull it up to your hook when you need to join that color back into your project.

When you start to have a lot of color changes, it helps to split up your skeins by winding your yarn around multiple bobbins, spools, large clothespins or even clip clips! I used large clothespins and then clipped them to the blanket when not in use so the yarn doesn't get tangled.



## How to Read the Chart

Print out the 4 Charts and tape them together to form one large Chart. Start in the lower right corner and mark off each square as you go. Each square in this C2C Chart = chain 3 + 3 DC. The first square in the corner is Row 1. You will work diagonally back and forth (down one row and back up the next). So, Row 2 of the Chart will be read diagonally from left to right and Row 3 from right to left.

## NOTES

1. Blanket is worked in two steps. First, the body of the pencil is worked using the C2C technique. Then the top of the pencil is worked directly onto top of body, back and forth in rows of double crochet.
2. Decreases (dc2tog) are worked at the beg and end of each row to shape top of pencil.
3. To change yarn when working top of pencil, work last st of old color to last yarn over. Yarn over with new color and draw through all loops on hook to complete st. Proceed with new color. Fasten off old color.



For thousands of free patterns, visit our website [www.LionBrand.com](http://www.LionBrand.com)

To order visit our website [www.lionbrand.com](http://www.lionbrand.com) or call: 877-412-9772 any time! Every effort has been made to produce accurate and complete instructions. We cannot be responsible for variance of individual makers, human error, or typographical mistakes.

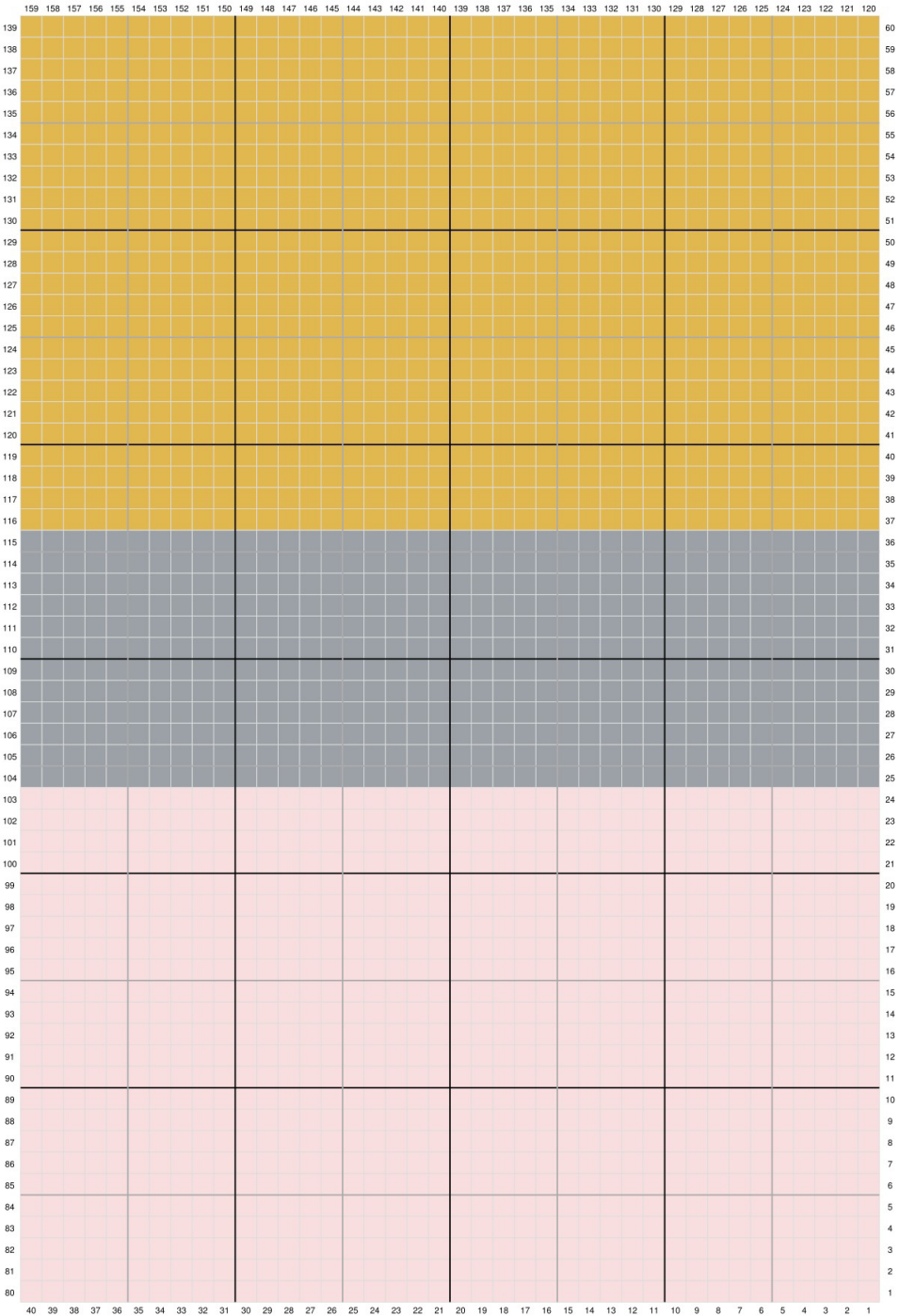
©2023 Lion Brand Yarn Company, all rights reserved.

BLANKET

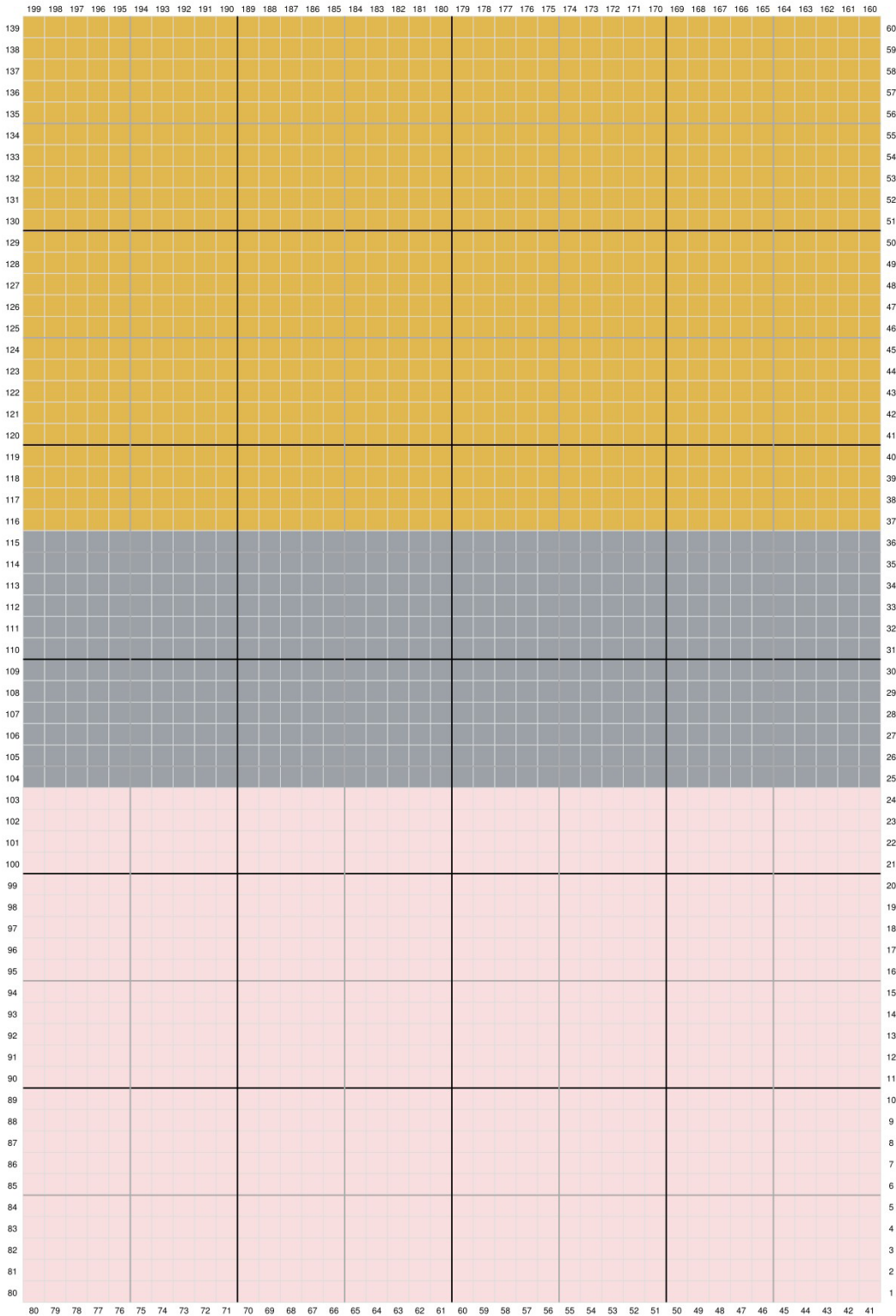
Body of Pencil

Work in C2C technique, changing yarn color following written instructions OR Chart, until all 199 rows have been completed.

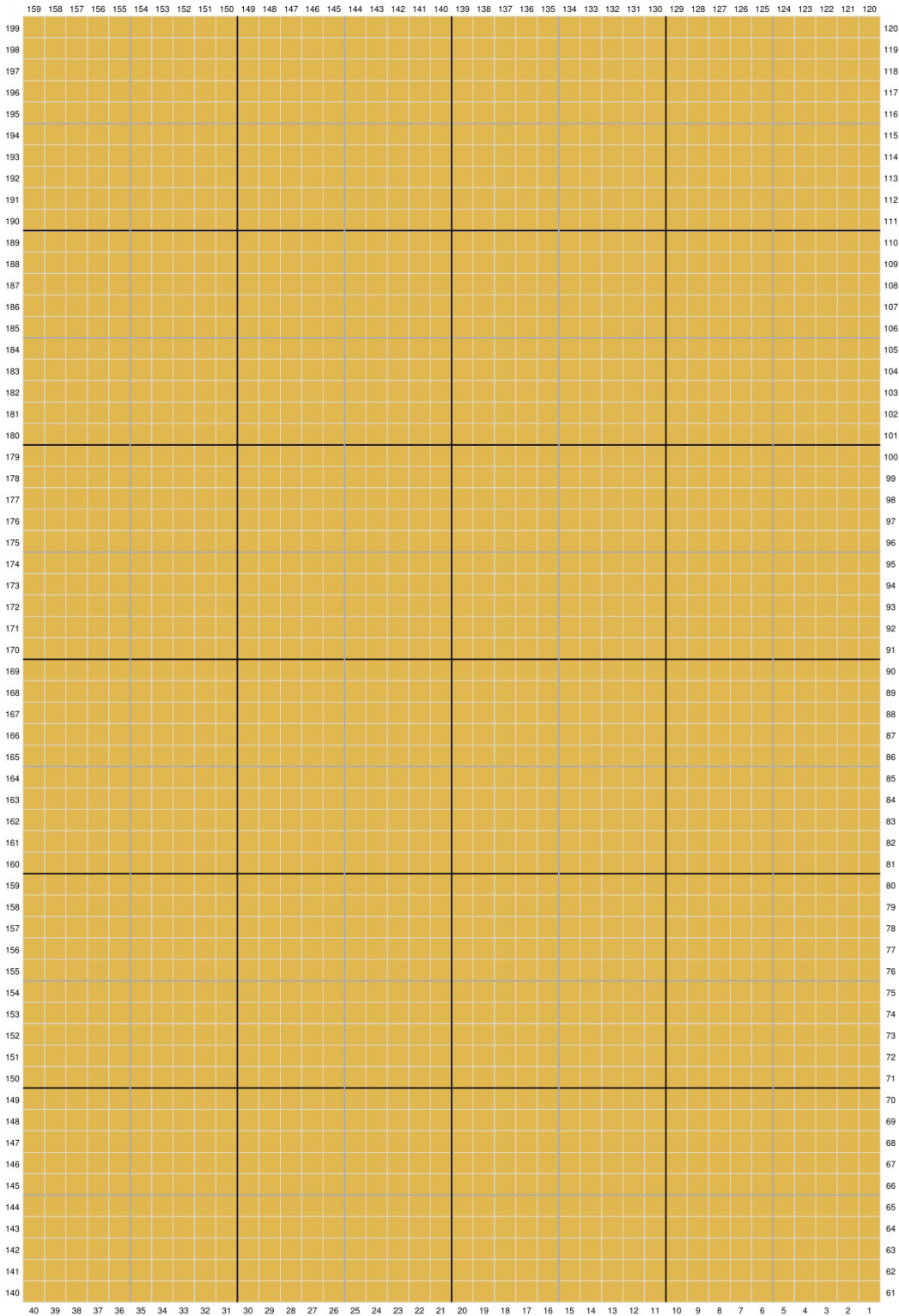
Lower Right



Lower Left

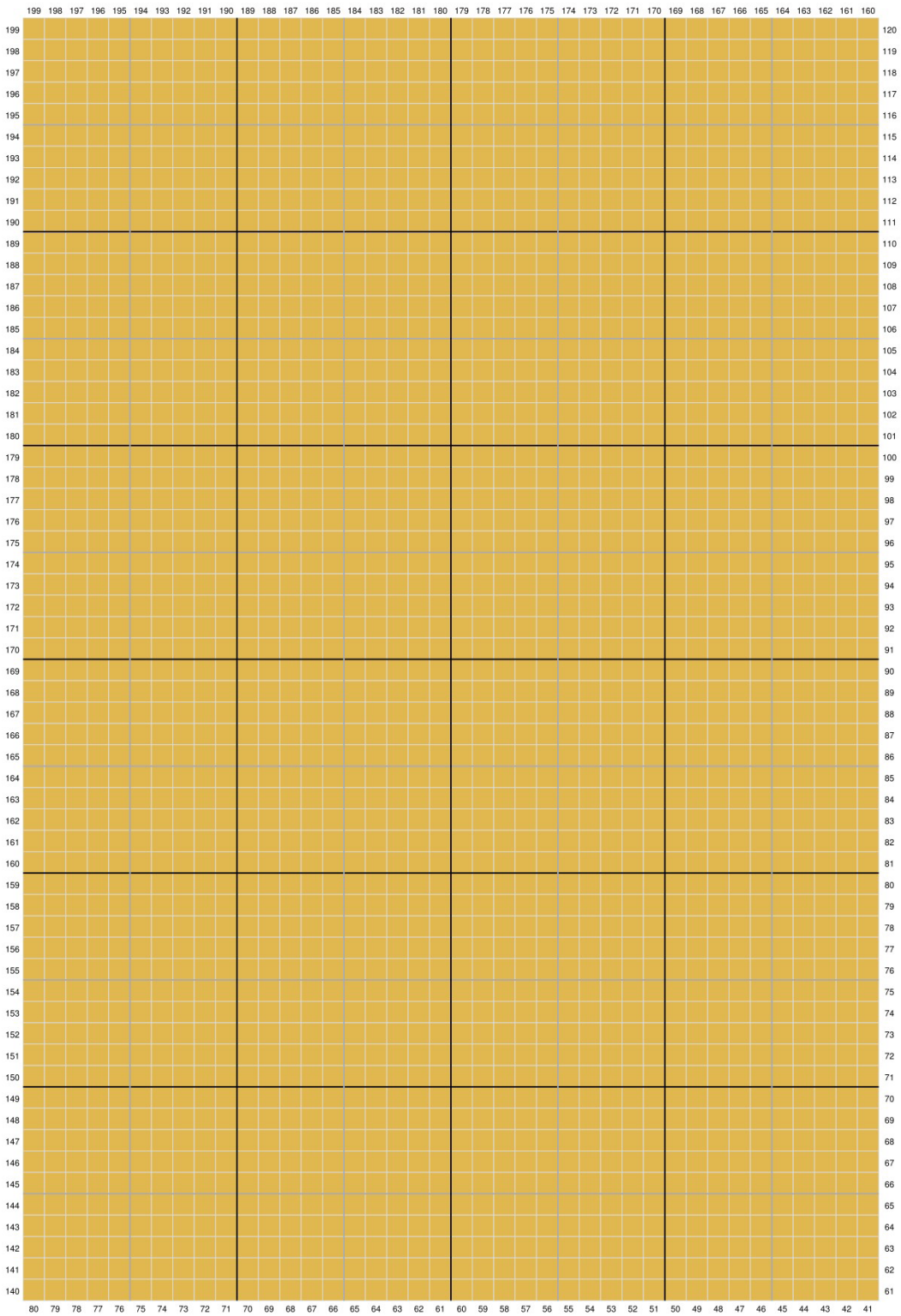


Upper Right





Upper Left





## ***Increase Section***

**Note:** One square is increased in each row.

**Row 1 (RS):** With A, ch 6, dc in 4th ch from hook, dc in next 2 ch – you will have 1 square in this row.

**Row 2:** With A, ch 6, turn, dc in 4th ch from hook, dc in next 2 ch, (sl st, ch 3, 3 dc) in next ch 3 sp – 2 squares.

**Row 3:** With A, ch 6, turn, dc in 4th ch from hook, dc in next 2 ch, (sl st, ch 3, 3 dc) in each ch-3 sp across – 3 squares.

**Rows 4-24:** Rep Row 3 for 21 more times – 24 squares in Row 24.

**Notes:** Continue to rep Row 3 AND change yarn color as instructed. Each row indicates how many squares to work using each color. For example, B x 1, A x 24, means to begin by working 1 square with B, then 24 squares with A. The small arrows at the beg of each row instruction indicate which direction the corresponding Chart row should be read in, diagonally right to left or left to right.

↙ **Row 25:** B x 1, A x 24 – 25 squares.

↗ **Row 26:** A x 24, B x 2 – 26 squares.

↙ **Row 27:** B x 3, A x 24 – 27 squares.

↗ **Row 28:** A x 24, B x 4 – 28 squares.

↙ **Row 29:** B x 5, A x 24 – 29 squares.

↗ **Row 30:** A x 24, B x 6 – 30 squares.

↙ **Row 31:** B x 7, A x 24 – 31 squares.

↗ **Row 32:** A x 24, B x 8 – 32 squares.

↙ **Row 33:** B x 9, A x 24 – 33 squares.

↗ **Row 34:** A x 24, B x 10 – 34 squares.

↙ **Row 35:** B x 11, A x 24 – 35 squares.

↗ **Row 36:** A x 24, B x 12 – 36 squares.

↙ **Row 37:** C x 1, B x 12, A x 24 – 37 squares.

↗ **Row 38:** A x 24, B x 12, C x 2 – 38 squares.

↙ **Row 39:** C x 3, B x 12, A x 24 – 39 squares.

↗ **Row 40:** A x 24, B x 12, C x 4 – 40 squares.

↙ **Row 41:** C x 5, B x 12, A x 24 – 41 squares.

↗ **Row 42:** A x 24, B x 12, C x 6 – 42 squares.

↙ **Row 43:** C x 7, B x 12, A x 24 – 43 squares.

↗ **Row 44:** A x 24, B x 12, C x 8 – 44 squares.

↙ **Row 45:** C x 9, B x 12, A x 24 – 45 squares.

↗ **Row 46:** A x 24, B x 12, C x 10 – 46 squares.

↙ **Row 47:** C x 11, B x 12, A x 24 – 47 squares.

For thousands of free patterns, visit our website [www.LionBrand.com](http://www.LionBrand.com)

To order visit our website [www.lionbrand.com](http://www.lionbrand.com) or call: 877-412-9772 any time! Every effort has been made to produce accurate and complete instructions. We cannot be responsible for variance of individual makers, human error, or typographical mistakes.

©2023 Lion Brand Yarn Company, all rights reserved.

- ↗ **Row 48:** A x 24, B x 12, C x 12 – 48 squares.
- ↘ **Row 49:** C x 13, B x 12, A x 24 – 49 squares.
- ↗ **Row 50:** A x 24, B x 12, C x 14 – 50 squares.
- ↘ **Row 51:** C x 15, B x 12, A x 24 – 51 squares.
- ↗ **Row 52:** A x 24, B x 12, C x 16 – 52 squares.
- ↘ **Row 53:** C x 17, B x 12, A x 24 – 53 squares.
- ↗ **Row 54:** A x 24, B x 12, C x 18 – 54 squares.
- ↘ **Row 55:** C x 19, B x 12, A x 24 – 55 squares.
- ↗ **Row 56:** A x 24, B x 12, C x 20 – 56 squares.
- ↘ **Row 57:** C x 21, B x 12, A x 24 – 57 squares.
- ↗ **Row 58:** A x 24, B x 12, C x 22 – 58 squares.
- ↘ **Row 59:** C x 23, B x 12, A x 24 – 59 squares.
- ↗ **Row 60:** A x 24, B x 12, C x 24 – 60 squares.
- ↘ **Row 61:** C x 25, B x 12, A x 24 – 61 squares.
- ↗ **Row 62:** A x 24, B x 12, C x 26 – 62 squares.
- ↘ **Row 63:** C x 27, B x 12, A x 24 – 63 squares.
- ↗ **Row 64:** A x 24, B x 12, C x 28 – 64 squares.
- ↘ **Row 65:** C x 29, B x 12, A x 24 – 65 squares.
- ↗ **Row 66:** A x 24, B x 12, C x 30 – 66 squares.
- ↘ **Row 67:** C x 31, B x 12, A x 24 – 67 squares.
- ↗ **Row 68:** A x 24, B x 12, C x 32 – 68 squares.
- ↘ **Row 69:** C x 33, B x 12, A x 24 – 69 squares.
- ↗ **Row 70:** A x 24, B x 12, C x 34 – 70 squares.
- ↘ **Row 71:** C x 35, B x 12, A x 24 – 71 squares.
- ↗ **Row 72:** A x 24, B x 12, C x 36 – 72 squares.
- ↘ **Row 73:** C x 37, B x 12, A x 24 – 73 squares.
- ↗ **Row 74:** A x 24, B x 12, C x 38 – 74 squares.
- ↘ **Row 75:** C x 39, B x 12, A x 24 – 75 squares.
- ↗ **Row 76:** A x 24, B x 12, C x 40 – 76 squares.
- ↘ **Row 77:** C x 41, B x 12, A x 24 – 77 squares.
- ↗ **Row 78:** A x 24, B x 12, C x 42 – 78 squares.
- ↘ **Row 79:** C x 43, B x 12, A x 24 – 79 squares.
- ↗ **Row 80:** A x 24, B x 12, C x 44 – 80 squares.

## Even Section

**Note:** The total number of squares in each row stays the same – 80 squares. One square is decreased on left edge and one square is increased on right edge.

✂ **Row 81:** With C, turn, ch 6, dc in 4th ch from hook, dc in next 2 ch, (sl st, ch 3, 3 dc) in next 44 ch-3 sps; with B, (sl st, ch 3, 3 dc) in next 12 ch-3 sps; with A, (sl st, ch 3, 3 dc) in next 23 ch-3 sps; leaving last ch-3 sp unworked.

↗ **Row 82:** With A, turn, sl st in each dc across to next ch-3 sp, (sl st, ch 3, 3 dc) in next 21 ch-3 sps; with B, (sl st, ch 3, 3 dc) in next 12 ch-3 sps; with C, (sl st, ch 3, 3 dc) in last 46 ch-3 sps.

✂ **Row 83:** With C, turn, ch 6, dc in 4th ch from hook, dc in next 2 ch, (sl st, ch 3, 3 dc) in next 46 ch-3 sps; with B, (sl st, ch 3, 3 dc) in next 12 ch-3 sps; with A, (sl st, ch 3, 3 dc) in next 21 ch-3 sps, leaving last ch-3 sp unworked.

Rep Rows 82 and 83 AND change yarn color as instructed.

↗ **Row 84:** A x 20, B x 12, C x 48.

✂ **Row 85:** C x 49, B x 12, A x 19.

↗ **Row 86:** A x 18, B x 12, C x 50.

✂ **Row 87:** C x 51, B x 12, A x 17.

↗ **Row 88:** A x 16, B x 12, C x 52.

✂ **Row 89:** C x 53, B x 12, A x 15.

↗ **Row 90:** A x 14, B x 12, C x 54.

✂ **Row 91:** C x 55, B x 12, A x 13.

↗ **Row 92:** A x 12, B x 12, C x 56.

✂ **Row 93:** C x 57, B x 12, A x 11.

↗ **Row 94:** A x 10, B x 12, C x 58.

✂ **Row 95:** C x 59, B x 12, A x 9.

↗ **Row 96:** A x 8, B x 12, C x 60.

✂ **Row 97:** C x 61, B x 12, A x 7.

↗ **Row 98:** A x 6, B x 12, C x 62.

✂ **Row 99:** C x 63, B x 12, A x 5.

↗ **Row 100:** A x 4, B x 12, C x 64.

✂ **Row 101:** C x 65, B x 12, A x 3.

↗ **Row 102:** A x 2, B x 12, C x 66.

✂ **Row 103:** C x 67, B x 12, A x 1.

↗ **Row 104:** B x 12, C x 68.

✂ **Row 105:** C x 69, B x 11.

↗ **Row 106:** B x 10, C x 70.

✂ **Row 107:** C x 71, B x 9.

↗ **Row 108:** B x 8, C x 72.

✂ **Row 109:** C x 73, B x 7.

↗ **Row 110:** B x 6, C x 74.

✂ **Row 111:** C x 75, B x 5.

↗ **Row 112:** B x 4, C x 76.

✂ **Row 113:** C x 77, B x 3.

↗ **Row 114:** B x 2, C x 78.

✂ **Row 115:** C x 79, B x 1.

Cut B, work remainder of Blanket with C only.

Row 116-120: C x 80.

## ***Decrease Section***

**Note:** One square is decreased in each row.

✂ **Row 121:** With C, turn, sl st in each dc across to next ch-3 sp, (sl st, ch 3, 3 dc) in each rem ch-3 sp across – 79 squares.

↗ **Row 122:** With C, turn, sl st in each dc across to next ch-3 sp, (sl st, ch 3, 3 dc) in each rem ch-3 sp across – 78 squares.

**Rows 123-198:** Rep Rows 121 and 122 until the last row you work has only 2 squares.

✂ **Row 199:** Sl st in each dc across to next ch-3 sp, (sl st, ch 3, 3 dc) in next ch-3 sp – 1 square.

Fasten off.

## ***Top of Pencil***

From RS, draw up a loop of D in top right corner of body of pencil.

**Row 1 (RS):** With D, ch 2, work 2 dc in top of each “square” across – 160 sts.

**Row 2:** With D, ch 2, turn, (dc2tog) twice, dc in each st across to last 4 sts, (dc2tog) twice – 156 sts.

**Rows 3-30:** With D, rep Row 2 until only 44 sts rem. Change to E in last st of Row 30.

**Rows 31-39:** With E, rep Row 2 until only 8 sts rem.

Fasten off.



## FINISHING

Weave in ends.

## ABBREVIATIONS

**beg** = begin(ning)

**ch** = chain

**ch-sp(s)** = chain space(s) previously made

**dc** = double crochet

**rem** = remain(ing)

**rep** = repeat

**RS** = right side

**sl st** = slip stitch

**st(s)** = stitch(es)

*Every effort has been made to produce accurate and complete instructions. We cannot be responsible for variance of individual knitters or crocheters, human error, or typographical mistakes.*

*©2023 Lion Brand Yarn Company, all rights reserved.*

For thousands of free patterns, visit our website [www.LionBrand.com](http://www.LionBrand.com)

To order visit our website [www.lionbrand.com](http://www.lionbrand.com) or call: 877-412-9772 any time! Every effort has been made to produce accurate and complete instructions. We cannot be responsible for variance of individual makers, human error, or typographical mistakes.

©2023 Lion Brand Yarn Company, all rights reserved.