

Bermuda Tote

Designed by Two of Wands

Pattern No.

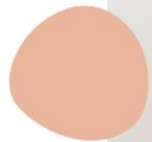
Yarn: Lion Brand®
Color Theory®

Level 2 Easy

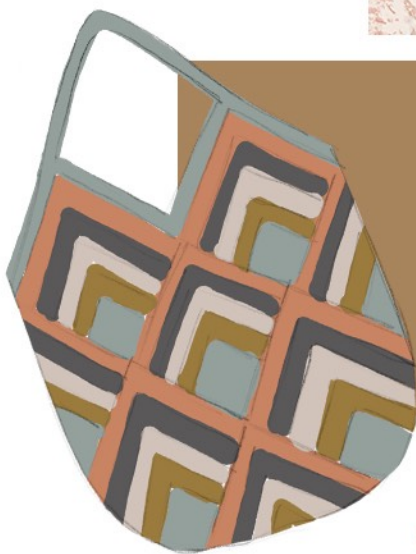


BERMUDA TOTE

●●○○



TWO
OF
WANDS



MATERIALS

- 1 skein each Lion Brand Color Theory in Tourmaline (619-178S) for color A, Dijon (619-170AE) for color B, Bone (619-122X) for color C, Thunder (619-150BE) for color D, and Himalayan Salt (619-184X) for color E
(worsted, weight 4; 246yds/225m per skein)

- US G/6 (4mm) crochet hook
- Removable stitch marker
- Tapestry needle

GAUGE

17 sts x 9 rows = 4"/10cm in double crochet

FINISHED DIMENSIONS

A Length: 15"/38cm

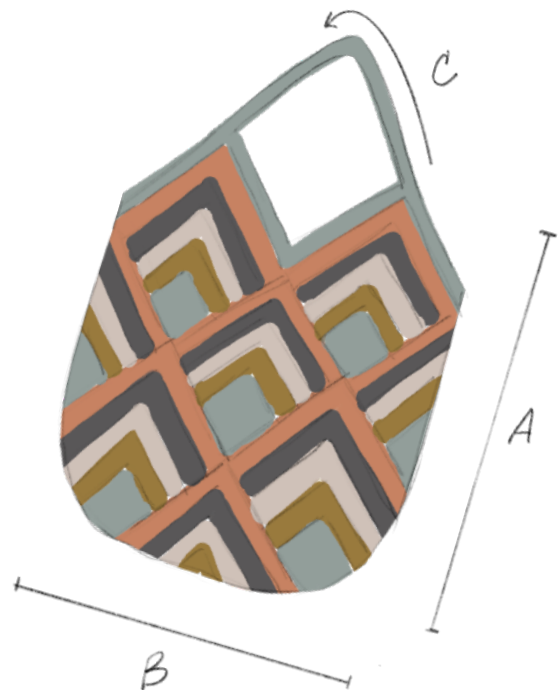
B Width: 15"/38cm

C Strap Length: 16"/41cm

ABBREVIATIONS

All Two of Wands patterns are written in standard US terms.

Ch	Chain
Dc	Double crochet
Rep	Repeat
Sc	Single crochet
Sc2tog	Single crochet 2 together
Sl st	Slip stitch
St(s)	Stitch(es)
Tr	Treble crochet



NOTES

Bag is made of 13 individual squares which are sewn together to form the shape. Strap is crocheted onto bag after construction. Squares are worked flat in back and forth rows – turn at the end of each row. To change color, work the final yarn over of the last stitch in the previous row with the new color. The ch 3 at the beginning of each row counts as a stitch – work the first dc of each row in the 2nd stitch, and work the last dc of each row in the top of the turning ch from the row below.

SQUARES (MAKE 13)

With color A, ch 4.

Row 1 In 4th ch from hook, dc 1, tr 1, dc 2. (4 dc + 1 tr)

Row 2 Ch 3, dc 1, (dc 2, tr 1, dc 2) in tr, dc 2. (8 dc + 1 tr)

Place a removable stitch marker on the corner tr st to easily identify it, and move it up each row.

Row 3 Ch 3, dc to tr, (dc 2, tr 1, dc 2) in tr, dc to end of row. (12 dc + 1 tr)

Change to color B.

Rows 4+5 Rep row 3. (20 dc + 1 tr)

Change to color C.

Rows 6+7 Rep row 3. (28 dc + 1 tr)

Change to color D.

Rows 8+9 Rep row 3. (36 dc + 1 tr)

Change to color E.

Rows 10+11 Rep row 3. (44 dc + 1 tr)

Do not fasten off. Rotate work to begin working down the side edge.

Square Border:

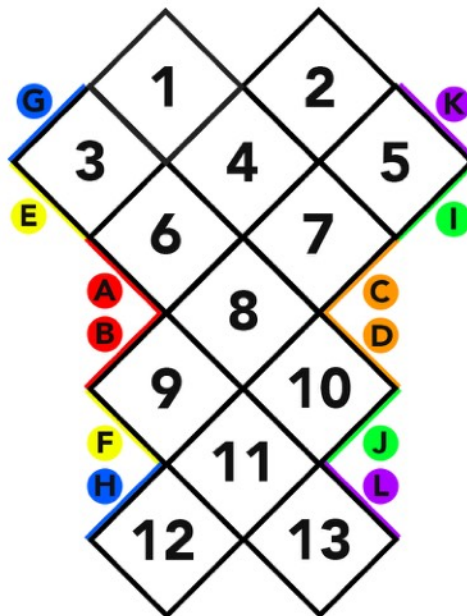
Note: When working into the sides of dc rows, insert the hook under two bars of the side of the stitch rather than working around the whole post to prevent large holes.

Ch 1, sc 2 in the side of each dc row to the next corner (22 dc), sc 2 in the corner, rotate work to begin working down next side, sc 2 in the side of each dc row to the next corner (22 dc), sc 2 in the corner, rotate work to begin working down next side and starting in the top of the st just worked into, sc in each dc along edge to next corner (22 dc), sc 2 in corner tr, rotate work to begin working down final side, sc in each dc along edge to next corner (22 dc), sc 2 in the corner, sl st to 1st sc to join. (96 sc)

Fasten off. Secure and weave in all ends.

CONSTRUCTION

Block all squares to 5.5"/14cm to ensure a perfect fit. Using a whip stitch or seaming technique of your choice, seam the squares together in the configuration illustrated below. Fold squares 12 and 13 up to meet squares 1 and 2. Square 8 will be folded in half horizontally. Using the colors and letters on the configuration as a guide, seam side A to side B, side C to side D, side E to side F, and so on. Squares 3 and 5 will be folded in half vertically.



Secure and weave in all ends.

OUTER EDGING AND STRAPS

With color A and front of bag (squares 1, 2, 4, 6, 7) facing up, rejoin yarn in the 1st of the 22 sc along the right side edge of square 2 (leave the remaining corner st next to square 5 unworked).

Round 1 Ch 1 and starting in same st as join, sc 23 up the right side edge of square 2 (last sc should be in the 1st of the 2 corner sts at the top of square 2), ch 68 for front strap, then starting in the 2nd corner st at the top of square 1, sc 23 down the left side edge of square 1 (there should be 1 corner st remaining), sc2tog around the remaining corner sts of squares 1 and 12, sc 23 up the right side edge of square 12 (last sc should be in the 1st of the 2 corner sts at the top of square 12), ch 68 for back strap, then starting in the 2nd corner st at the top of square 13, sc 23 down the left side edge of square 13 (there should be 1 corner st remaining), sc2tog around the remaining corner sts of squares 13 and 2. Do not join.

Round 2 Sc around, working a sc2tog at the left side corner and again at the end of the round.

Fasten off. With front of bag facing up, rejoin yarn in the remaining corner st at the top of square 2.

Round 3 Ch 1 and starting in the same st as join, sc 23 down the left side edge of square 2 (there should be 1 corner st remaining), sc2tog around the remaining corner sts of squares 2 and 1, sc 23 up the right side edge of square 1, then sc into the underside of each ch that formed the strap. Do not join.

Round 4 Sc around, working a sc2tog at the center corner.

Fasten off. Rep rounds 3 and 4 on back of bag along squares 12 and 13 and opposite strap.

Secure and weave in any remaining ends.



TWOOFWANDS.COM • @TWOOFWANDS

Share your projects made using Two of Wands patterns on Instagram with the hashtag #crewofwands to get featured on the @twoofwands page and be in the running for monthly pattern giveaways!

The pattern and photographs of this design are the property of Two of Wands and are for personal, non-commercial use only. These patterns files are protected by US copyright, and you may not distribute or sell them electronically or physically. Small batch sales of finished pieces made from this pattern are permitted, but seller must use their own photographs and credit must be given to Two of Wands as the designer.