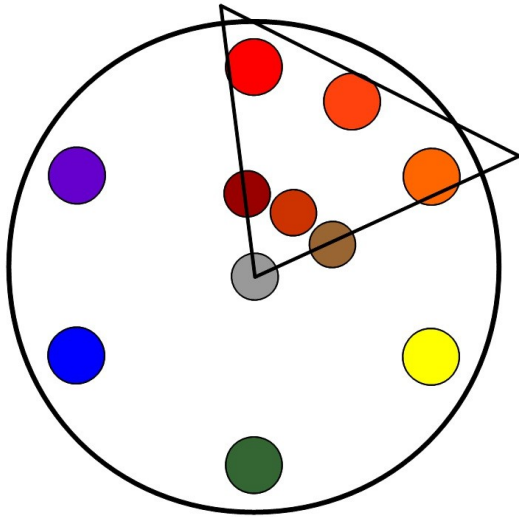




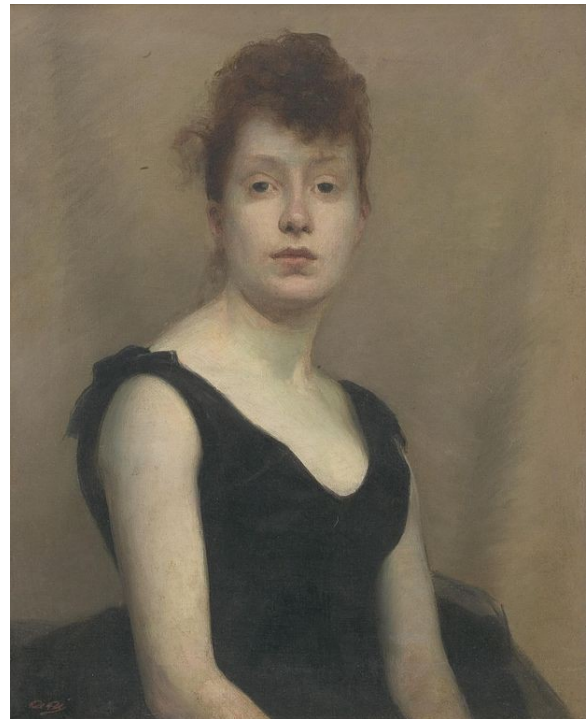
**Utrecht Art Supplies**

**Ask the Expert: Analogous Color Schemes**



An analogous color scheme is usually based on a primary or secondary color paired with a tertiary on either side of the true complement. This approach gives a powerful monochromatic appearance and facilitates subtle warm/cool relationships to create a naturalistic sense of direct and indirect lighting.

Analogous colors are by definition similar; neighboring hues on the color wheel will not contrast strongly against one another, and will not produce complements through mixtures. In order to emphasize intensity/chroma within an analogous arrangement, use neutrals tuned near the home value range of each color. Neutrals are also key to achieving strong value contrast when using analogous colors.



1890 portrait by Paul Peel using analogous colors in the yellow to red-orange range along with subtle neutrals

Questions? [Ask the Expert](#).

Intended for reference only. Observe all package instructions. Dick Blick Holdings/Utrecht Art Supplies is not responsible for any damage to personal property that may result from use of the information presented herein. © Copyright 2015 Dick Blick Holdings Inc. All rights reserved.