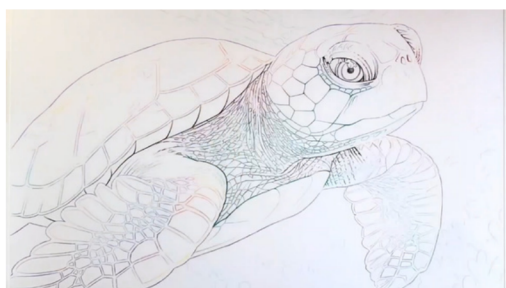




How to Draw a Colorful Sea Turtle with Prismacolor

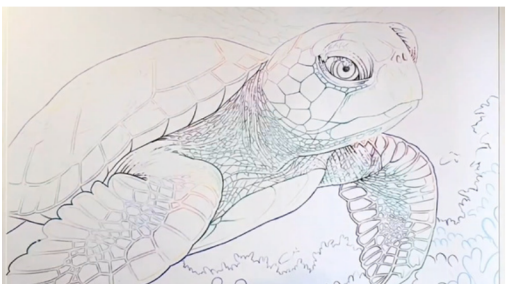
Learn to draw a colorful sea turtle with Prismacolor Premier Colored Pencils and Dual-Ended Chisel Tip Markers! In this tutorial, you'll first draw a detailed turtle in an ocean setting, then use your colored pencils and markers to create a stunning rainbow gradient effect.

HOW TO MAKE IT



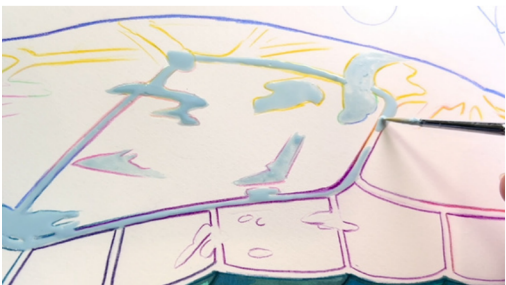
Step 1

Begin your line work of the sea turtle and ocean background using Prismacolor Col-Erase Pencils, creating a colorful yet light first layer.



Step 2

Once your preliminary line work is complete, go over everything with a bolder and more permanent layer of Prismacolor Premier Colored Pencils.



Step 3

Use a paintbrush to apply Pebeo Drawing Gum to your "whitest of white" areas and any highlights.



Step 4

Once the Drawing Gum is dry, start filling in your drawing with Prismacolor Premier Dual-Ended Chisel Tip Markers. Start with the darkest colors/shadows and use a stippling technique to create a gradient. Blend out the stippled gradient with mid tones, working your way up to the lightest colors before polishing everything off with a colorless blender. Once everything is dry, add texture details.

How to Draw a Colorful Sea Turtle with Prismacolor



Step 5

Remove the Drawing Gum. Clean up the edges and tone the highlights, creating a rainbow gradient effect.



Step 6

Apply a thin layer of Grumbacher Final Fixative over your drawing and allow to dry.



Step 7

Go over your marker drawing with Prismacolor Premier Colored Pencils to add highlights, shadows, and textures.



Step 8

Use the Posca Paint Marker in White to add a few little highlight flecks.



Step 9

Lastly, preserve your drawing by applying another layer of Grumbacher Final Fixative.