



## Lacy Bandana Cowl

### SIZE

One Size

### FINISHED MEASUREMENTS

**Circumference:** 25" (at narrowest point around neck)

**Depth:** 18" (at center front point)

### MATERIALS

**Premier® Yarns Momenti™** (58% Cotton, 42% Acrylic; 3.5 oz/100 g, 109 yds/100 m)

- 2016-01 Sweet Pea – 1 ball

**Needles:** US Size 9 (5.5 mm) 24" circular needle or size needed to obtain gauge

**Notions:** Tapestry needle, 3 stitch markers (2 in one color and 1 in another)

### GAUGE

16 sts x 20 rows = 4" in pattern stitch

**Save time, check your gauge.**

### Skills/Techniques Used:

- Knitting in the round
- Knit and purl stitches
- Using stitch markers
- K2tog, ssk and s2kp decreases
- Yo increases

### PATTERN NOTES

This Cowl is worked from the top down in the round with increases to create the center point. Both written and charted instructions are included for the stitch pattern.

### COWL

#### Setup

Cast on 100 sts, pm (single color marker to indicate beg/end of rnd) and join for working in the rnd, being careful not to twist sts.

**Rnd 1:** Purl.

**Rnd 2:** Knit.

**Rnd 3:** P49, pm, p1 (center stitch), pm, purl to end.

#### Neck

*Note: This section is charted on the last page.*

**Rnd 1:** \*Yo, ssk, k1, k2tog, yo, k1; rep from \* to 7 sts bef next m, yo, ssk, k1, k2tog, yo, ssk, yo, sm, k1 (center stitch), sm, yo, k2tog, \*yo, ssk, k1, k2tog, yo, k1; rep from \* to end.

**Rnd 2:** Knit.

**Rnd 3:** \*K1, yo, s2kp, yo, k2; rep from \* to 7 sts bef next m, k1, yo, s2kp, yo, k1, ssk, yo, sm, k1, sm, yo, k2tog, \*k1, yo, s2kp, yo, k2; rep from \* to end.

**Rnd 4:** Knit.

Rep Rnds 1-4, 3 more times.

#### Increase Section

*Note: Stitch count increases by 2 stitches every odd numbered round, a total of 12 stitches per repeat. This section is charted on the last page.*

**Rnd 1:** \*Yo, ssk, k1, k2tog, yo, k1; rep from \* to 1 st bef next m, k1, yo, sm, k1 (center stitch), sm, yo, k2, \*yo, ssk, k1, k2tog, yo, k1; rep from \* to end.

**Even Rnds 2-12:** Knit.

**Rnd 3:** \*K1, yo, s2kp, yo, k2; rep from \* to 2 sts bef next m, k2, yo, sm, k1, sm, yo, k3, \*k1, yo, s2kp, yo, k2; rep from \* to end.

# Lacy Bandana Cowl

By Premier® Yarns Design Team

project continued

**Rnd 5:** \*Yo, ssk, k1, k2tog, yo, k1; rep from \* to 3 sts bef next m, yo, ssk, k1, yo, sm, k1, sm, yo, k1, k2tog, yo, k1, \*yo, ssk, k1, k2tog, yo, k1; rep from \* to end.

**Rnd 7:** \*K1, yo, s2kp, yo, k2; rep from \* to 4 sts bef next m, k1, yo, ssk, k1, yo, sm, k1, sm, yo, k1, k2tog, yo, k2, \*k1, yo, s2kp, yo, k2; rep from \* to end.

**Rnd 9:** \*Yo, ssk, k1, k2tog, yo, k1; rep from \* to 5 sts bef next m, yo, ssk, k3, yo, sm, k1, sm, yo, k3, k2tog, yo, k1, \*yo, ssk, k1, k2tog, yo, k1; rep from \* to end.

**Rnd 11:** \*K1, yo, s2kp, yo, k2; rep from \* to next m, yo, sm, k1, sm, yo, k1, \*k1, yo, s2kp, yo, k2; rep from \* to end.

Rep Rnds 1-12 until Cowl measures 18¼" deep from cast-on edge to center point, or to desired depth.

## Edging

**Rnd 1:** Purl.

**Rnd 2:** Knit to next m, yo, sm, k1, sm, yo, knit to end – 2 sts inc'd.

Work Rnds 1-2 once and then work Rnd 1.

Loosely bind off all sts knitwise.

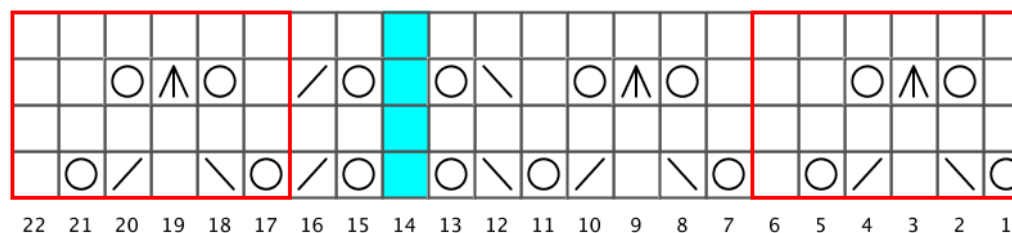
## Finishing

Weave in ends.

## Abbreviations

<b>bef</b>	before
<b>beg</b>	begin(ning)
<b>dec('d)</b>	decrease(d)
<b>inc('d)</b>	increase(d)
<b>k</b>	knit
<b>k2tog</b>	knit 2 sts together (1 st dec'd)
<b>m</b>	marker
<b>p</b>	purl
<b>pm</b>	place marker
<b>rep</b>	repeat(ing)
<b>rnd(s)</b>	round(s)
<b>s2kp</b>	slip 2 sts tog as if to k, k1, pass both slipped sts over k st (2 sts dec'd)
<b>sm</b>	slip marker
<b>ssk</b>	slip slip knit (1 st dec'd)
<b>st(s)</b>	stitch(es)
<b>yo</b>	yarn over

## Neck Chart



## Key

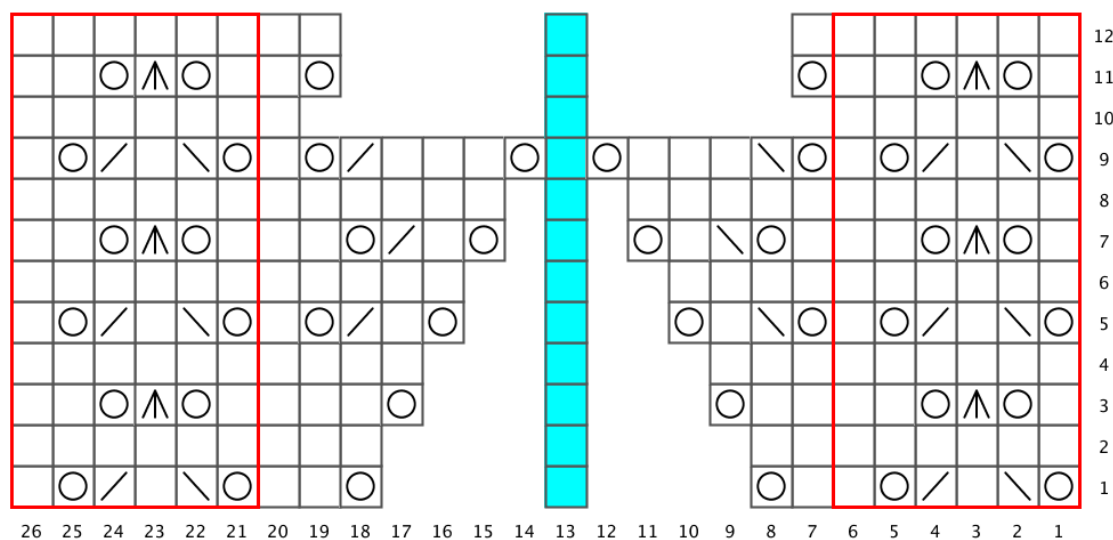
	knit
	yo
	ssk
	k2tog
	patt rep
	center stitch
	s2kp

# Lacy Bandana Cowl

By Premier® Yarns Design Team

project continued

Increase Section Chart



Key

-  knit
-  center stitch
-  yo
-  ssk
-  k2tog
-  s2kp
-  patt rep