





# dormakaba skyra cylinder

## Battery-free and smartly connected

**Advantages at a glance**

- **Proven Mechanical Design with Modular Flexibility:**  
skyra cylinders are built upon dormakaba's well-established modular cylinder system, offering versatile solutions to suit virtually any access requirement
- **Intuitive programming:**  
No specialist programming tools are needed—just the skyra key and accompanying app. Setup is straightforward and user-friendly.
- **On-Site Configuration:**  
skyra cylinders require no prior configuration. They can be activated instantly and directly on site using the skyra app, making installation quick and hassle-free.
- **Cost-effective and sustainable:**  
The skyra range includes a wide selection of battery-free mechatronic cylinders, all powered by the skyra key. This not only reduces maintenance costs but also supports sustainable practices.

### A fully digital locking system

Developed for critical infrastructure and dispersed sites, skyra provides a robust and efficient solution for access control and organisational security.

Our skyra door components are equipped with a battery-free mechatronic insert that enhances proven mechanical systems while delivering all the benefits of electronic locking technology.

The skyra key powers the locking cylinders and connects them to the central system. Built to last, Skyra cylinders are highly durable and well-suited for outdoor environments.

### Simple operation and secure access control in action

Using the skyra key is straightforward and intuitive: simply insert the key to verify access rights and unlock the door. A quick turn is all it takes to gain entry.

### The key to full connection and encryption

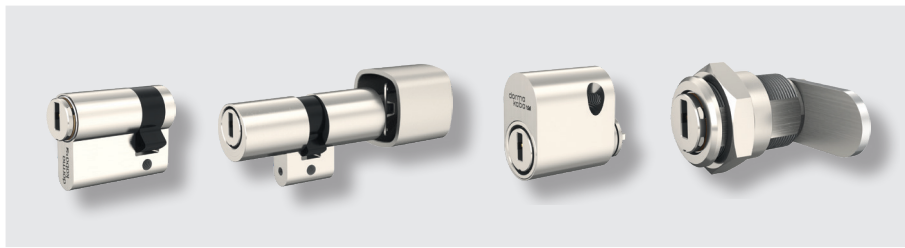
Every time a skyra key is inserted, the event is logged within the cylinder. Behind the scenes, access events are transferred from the cylinder to the key, and then securely relayed to the central system via Bluetooth® using a smartphone.

All access data is fully encrypted—from the central system right through to the door—ensuring maximum security at every stage.

### Versatile Range, Tailored Solutions: the wide skyra range

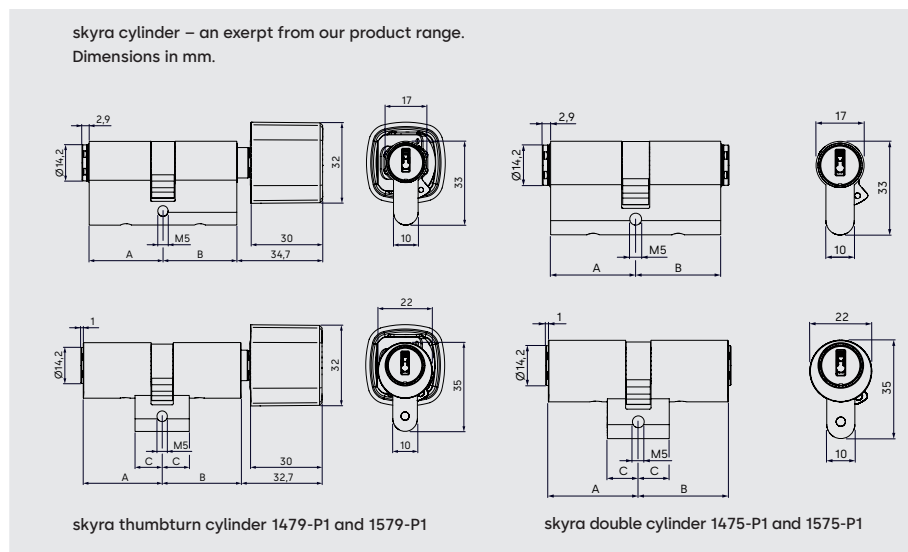
Switching from mechanical to electronic locking systems is easy, as the skyra cylinders fit into standard door cylinder cutouts.

The skyra range is built upon dormakaba's modular cylinder system, offering a broad selection of mechatronic components to suit virtually any door or locking requirement.



## Features and use

- **Complete product range:** from door cylinders in all known profiles, camlocks, furniture locks and switch cylinders through to cylinders for T-handles and IT racks.
- **Certified security:** tested by security experts in accordance with EN 15684 and VdS BZ+.
- **Electronic security:** every cylinder is secured with an individual security key. The data exchanged with the cylinder is also encrypted.
- **A high degree of flexibility:** skyra door components are supplied without pre-programming and are not bound to a specific system. They can be conveniently sourced from stock, with the appropriate skyra cylinder fitted on site. Commissioning is straightforward using the skyra key and app, which seamlessly registers the cylinder within the system.
- **Assigning authorisation is easy:** changes in authorisation are transferred to the skyra key and there's no need for any changes to be made to the cylinder on site.
- **Internal event log:** records events with time stamp and transfers data to the skyra key.
- **Suitable for outdoor use:** optional dust and weather protection prevents dirt, insects and moisture from getting into the key channel.



## Our Sustainability Commitment

dormakaba is committed to foster a sustainable development along our entire value chain. In order to give quantified disclosures of a product's environmental impact and its ecological footprint, dormakaba provides Environmental Product Declarations (EPDs). Download the EPD and read more about our sustainability commitment [here](#) or use the QR code provided.



## Technical data

### Cylinder designs & versions

- Euro profile, Swiss round profile, oval profiles  
Cylinder lengths in 5 mm-steps.  
Euro profile: from 30/30 to 220/220 mm;  
Swiss round p.: from 32.5/32.5 to 152.5/152.5 mm
- Camlocks
- Rim cylinders
- Furniture cylinders and locks
- Key switch cylinders
- Cylinders for T-handles

### Door cylinder variants:

- Half, double, thumbturn
- Short version (asymmetrical)
- One-sided blind or with mechanical anti-rotation safeguard
- Knobs: design, round, design small

### Surfaces:

- Nickel-plated, brass, chrome, burnished, black

### Couplings:

- Standard: lockable on both sides
- Optional: priority (X) or freewheel (FZG)

### Security

- AES-128 encryption
- Individual security encryption keys per cylinder

### Event log:

- Up to 500 events

### Service life:

- Min. 200,000 locking cycles

### Environment:

- Temperature range: -25 °C to +70 °C
- Protection class IP55; Protection class IP67 with additional weather protection

### Certificates

- EN 15684: 1 6 B 4 0 D 3 D
- VdS BZ+ (in preparation)
- Fire resistance: EN 1634-1: ≥ 90 min.

### Environmental product declaration: EPD

- Declaration no.: EPD-DOR-20250122-CBA1-EN
- Under ISO 14025 and EN 15804+A2
- Publisher: Institut Bauen und Umwelt e.V.

### Conformity

CE, UKCA, RoHS, REACH

Subject to change without prior notice. See the relevant dormakaba catalogue or system description for details and ordering information.  
Note: The Bluetooth® word mark and logos are registered trademarks owned by Bluetooth SIG, Inc.  
WN 5621451532, Version EN, 09/2025. © dormakaba.

**Any questions? We will be happy to assist you.**

dormakaba International Holding AG | Hofwisenstrasse 24 | CH-8153 Rümlang | [info.de@dormakaba.com](mailto:info.de@dormakaba.com) | [dormakaba.com](https://dormakaba.com)