



Hangar 6 Expansion, NAS Whidbey Island

POWERFUL DRAWING CONTROL

After construction on the hangar began, Nathan Howat, the Vice President of Blue Mountain Electric, sought a solution that would keep up-to-date drawings in his crew's hands. Previous tools that Howat had tested to resolve this issue did not adequately suit Blue Mountain's needs and fueled his search for a better alternative. That search ended when he discovered Fieldwire, a construction management app that allowed the Blue Mountain team to retain all of their detailed on-site markups even after updating the sheet versions. The ability to deliver current drawings to his employees without losing valuable data certainly struck a chord with Howat.

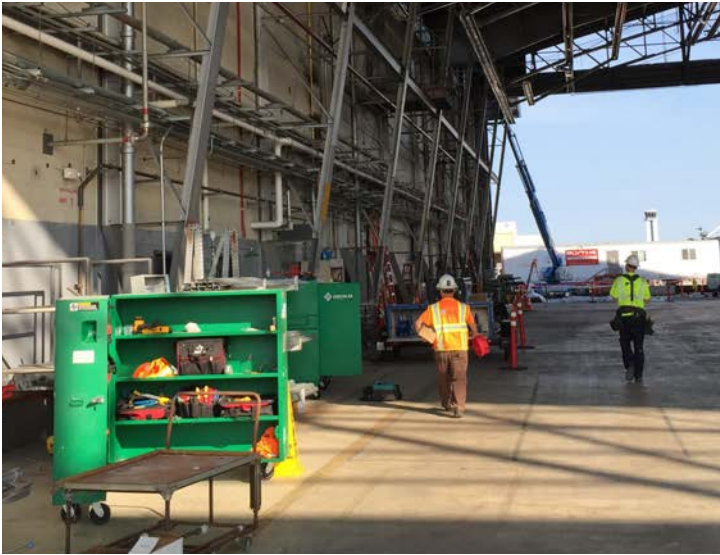
The next hurdle that Howat's team encountered on the Whidbey Island project was speed, specifically the increasing amount of sheet changes. In the past, the project had been peppered with printed drawings that needed to be replaced at a near-impossible rate, so the prospect of a modern method for plan versioning that could match the growing pace of design updates without sacrificing information really helped Fieldwire stand out to Howat. His team now had the tool they needed to address new additions to the naval base hangars at the speed they came in, and receiving current drawing information helped substantially reduce rework and accidental efforts.

REPORTING FOR DUTY

When we think of airplanes, our first image is usually of an open sky with the miniature silhouette of a jet high above us. What we might not often picture, and what requires a lot of attention, is the facility that houses these great metal birds when they're not gliding through the clouds. One such base, the U.S. Naval Air Station on Whidbey Island in Puget Sound, recently needed two of its hangar bays to be retrofitted. As one of the designated mega-projects in development by the Department of Labor, some sturdy shoulders were needed to bear the weight of this great challenge.

Enter Blue Mountain Electric, a Washington-based, veteran-owned industrial and commercial electric company. With years of experience working on Navy installations and design-build projects, there was no business better suited to shepherd the electrical aspect of the almost \$50 million Hangar 6 expansion project on NAS Whidbey Island. While other contractors are handling the general construction, the new aircraft hangar for this naval base cannot reach full functionality without Blue Mountain to give it a pulse.





REDUCED ON-SITE HASSLE

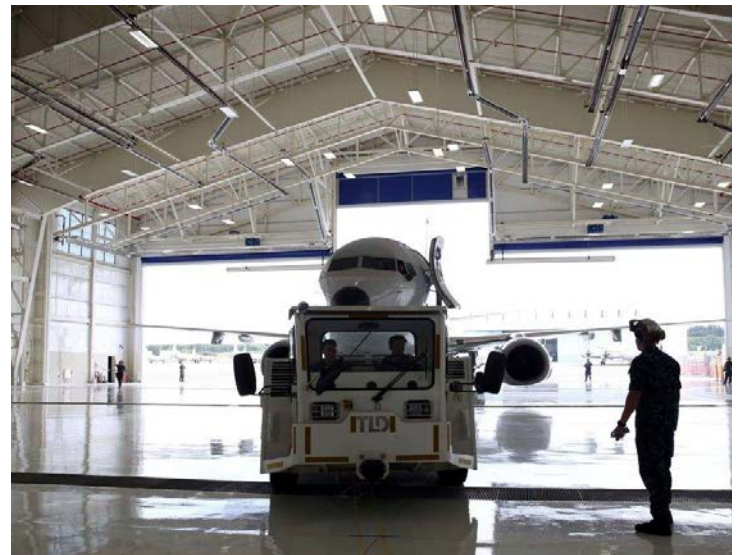
The expansion of Hangar 6 involves more than a few basic additions and maintenance. Given the nature of the facility as a naval air base, the daily activity of its occupants cannot simply cease while construction is underway. This presents a unique set of challenges for Blue Mountain Electric, as do the complex structural obligations that the hangar bay must meet in order to be up to code. But thanks to the intuitive management features available in Fieldwire, these day-to-day obstacles are greatly diminished.

“I can maintain a conformed set of drawings very easily in Fieldwire. As far as I’m concerned, your iPad app is second to none. I’ve never seen any other product come close to how powerful it is.”

- Nathan Howat, Vice President of Blue Mountain Electric, Inc.

A MUCH-NEEDED SPARK

Despite significant challenges inherent in design-build remodel projects, the modifications to Hangar 6 on NAS Whidbey Island have continued without a hitch, thanks to the dedication of Nathan Howat and the Blue Mountain Electric team. Through their collective skill and the practical magic of Fieldwire, they have continued to march forward and improve the naval air station with top-of-the-line work. Accurate drawing control, lightning-fast access, and innate usability helped ignite what, up until then, the project had been missing. The success derived from adopting Fieldwire will surely carry over into future projects for Blue Mountain, as well as anyone wise enough to lend Howat an ear.



Fieldwire is a mobile and desktop software platform that combines plan versioning, communication, issue tracking, and task management into a single easy-to-use app. Find out why over 50,000 projects are running on Fieldwire.

www.fieldwire.com

