



With over 40 years of honed construction and contracting experience, Bernards steady growth and industry know-how has helped them build a healthy construction business poised to continue expanding. Bernards is now shepherding projects that often exceed \$300 million in scale, and they are synonymous with integrity and quality throughout the Golden State.

Multi-family residential housing has been their forte for years, but Bernards is now branching out into new territory. One of their most recent projects is the new patient tower for the Henry Mayo Newhall Hospital in Valencia, California. The tower, a six-story, 160,000 square foot addition for increased patient housing, will be attached to the hospital's existing trauma center and include a helipad on its roof. It's an ambitious 2-year project with a complex set of necessities, given its intended function as a patient care facility, so the need for ironclad project management is clear to all involved.



# Patient Tower Henry Mayo Newhall Hospital

## KEEPING YOUR DRAWINGS IN HAND

William Lopez, Assistant Project Manager at Bernards, knew that he would need to maximize his team's efficiency in order to tackle one of his firm's first healthcare projects. Bernards was looking for a new tool to help alleviate the weaknesses they had encountered in their previous options. After taking Fieldwire for a spin, Lopez recognized the major potential he held in his hand. His chief aim with Fieldwire? Ensuring that his team always had complete, up-to-date plan sets with them throughout the day.

*"Our superintendents spend probably 80-90% of the day out in the field. Having access to the most current documents is critical. We didn't have a very good process in the past. Now, with Fieldwire, we're able to view drawings on-site more effectively."*

Indeed, Fieldwire houses the entirety of the hospital project's plans, and enables auto-syncing across platforms whenever new versions are added or edits are made. The strength of the software goes beyond merely carrying drawings, as Fieldwire also features an extensive array of markup tools that allow Lopez's crew to make their edits on the fly, wherever they go across the job site.



## NEW SOLUTIONS TO OLD CONSTRUCTION MANAGEMENT ISSUES

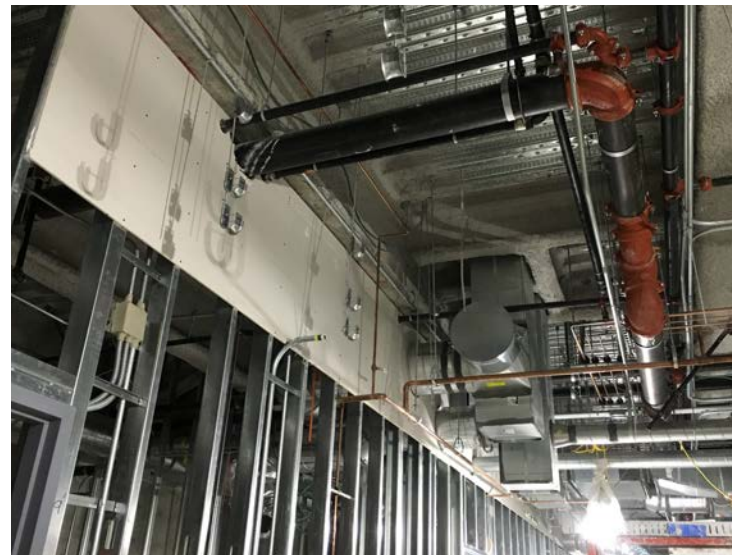
As construction on the new hospital tower began, William Lopez and his team really spread their wings with the features Fieldwire offered them. While the biggest plus for Lopez remains the plan management system, he also has his sights set on implementing more task-oriented uses, such as punch lists and issue tracking in terms of inspection requests. Lopez is confident he can leverage Fieldwire for these tasks in the same way that he has for his drawings, particularly given the speedy syncing system built into Fieldwire.

***“I would absolutely recommend Fieldwire, mainly because I think it does the drawing component well. I think it has that nailed, and I think that’s probably the most important thing. Fieldwire is the solution for us.” - William Lopez***

*“In the past it’s always been, ‘Well, how do we move stuff from the office to the field?’ Prior to Fieldwire, we weren’t able to view some drawings because they were too big. Anything we load onto Fieldwire is good to go. We don’t ever have to reload or wait for things to refresh, and I think the superintendents really appreciate that.”*

### A PAIN-FREE DAILY IMPROVEMENT

Fieldwire is helping Bernards focus on the job at hand and reducing their likelihood of getting bogged down in clunky managerial techniques. The app offers an innate user interface and efficient method of tracking progress while keeping your colleagues in the loop at the same time. And for William Lopez and his team, it’s making a difference with each passing day.



Fieldwire is a mobile and desktop software platform that combines plan versioning, communication, issue tracking, and task management into a single easy-to-use app. Find out why over 50,000 projects are running on Fieldwire.

[www.fieldwire.com](http://www.fieldwire.com)

