



# Shutters

ON THE BEACH®

WHERE NOTHING STANDS BETWEEN YOU AND THE SAND.

ENTER

*"Laid-back beach house feel, with all the perks of a luxury hotel." – Travel & Leisure*

*"Wake up to the sound of the surf outside your window and the sand just steps away." – Angeleno Magazine*



*etc*  
HOTELS

LEGEND  
*Preferred*  
HOTELS & RESORTS





# DISCOVER SHUTTERS

MAP

ACCOMMODATIONS

EVENTS

DINING

SPA & FITNESS

POOL & THE BEACH

AUDIO VISUAL

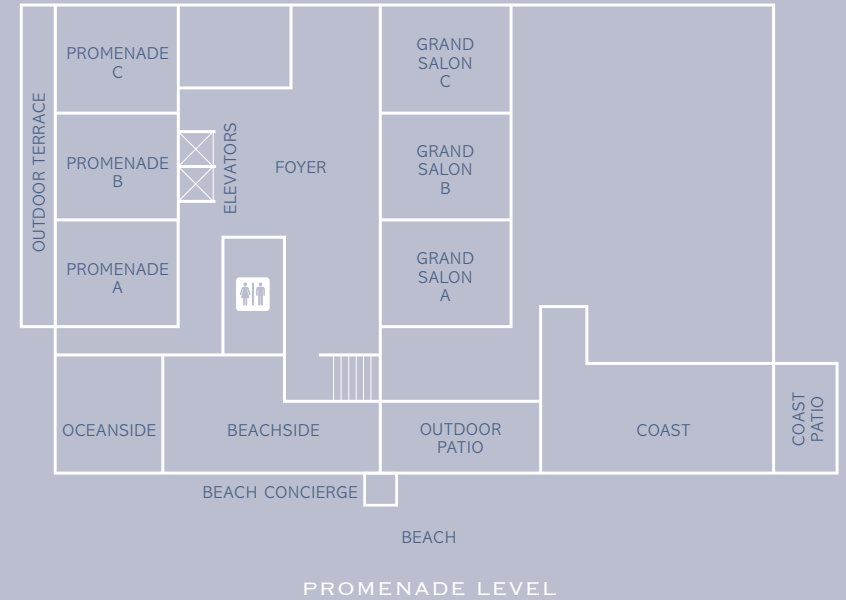
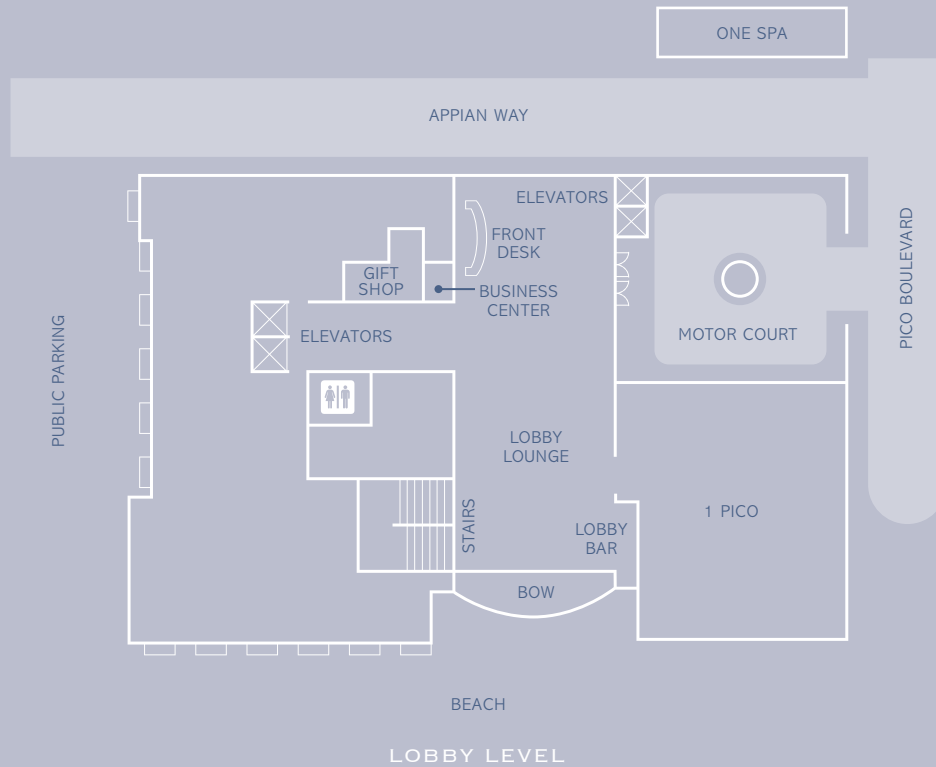
RECOMMENDED RESOURCES

MEDIA



*etc*  
HOTELS

LEGEND  
*Preferred*  
HOTELS & RESORTS



## DISCOVER SHUTTERS

- 198 Guestrooms
- 12 Suites
- Restaurants - 1 Pico & Coast
- Lobby Lounge | 24-Hour In-Room Dining
- ONE Spa | Fitness Center
- Outdoor Heated Pool | Whirlpool Spa | Beach Activity Center
- Located on the world-renowned Santa Monica Beach, walking distance to Santa Monica Pier, Third Street Promenade and Santa Monica Place
- 8 miles to LAX and Beverly Hills; 15 miles to Downtown LA
- Valet Parking Exclusively







KING BED



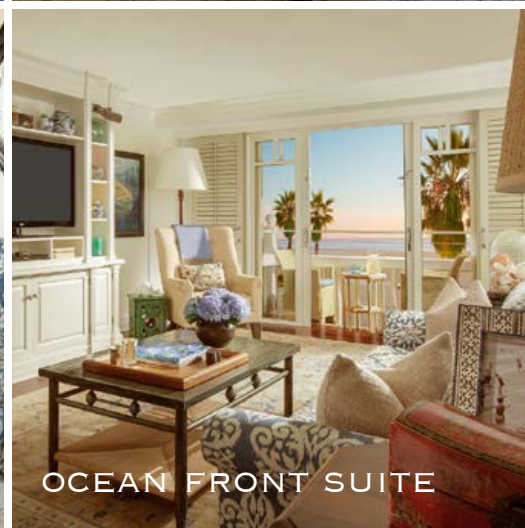
DOUBLE BED



SANTA MONICA SUITE



OCEAN VIEW SUITE



OCEAN FRONT SUITE



PACIFIC VIEW SUITE



BEACH HOUSE SUITE

# ACCOMMODATIONS

STEP INSIDE YOUR PERSONAL BEACH HOUSE



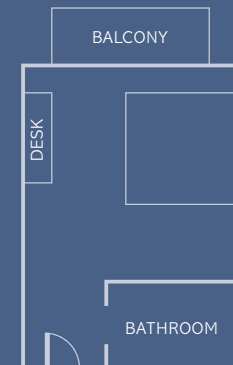


## KING BED

### GUESTROOM

*Superior, Deluxe and Spa Kings are Non-Ocean View  
Partial Ocean View, Ocean View and Premier Ocean View Kings*

- 450 square feet
- Residential feel with Hardwood Floors, Area Rugs and Built-in Entertainment Cabinet
- Handcrafted California King Bed
- Bathroom includes Hydrothermal Massage Tub and Separate Shower
- LCD Flatscreen TV and Bluetooth Speaker System
- In-Room Coffee Maker
- Most with Outdoor Balcony



450 SQUARE FEET (not to scale)

  
Shutters  
ON THE BEACH®  
ACCOMMODATIONS



*etc*  
HOTELS

LEGEND  
*Preferred*  
HOTELS & RESORTS

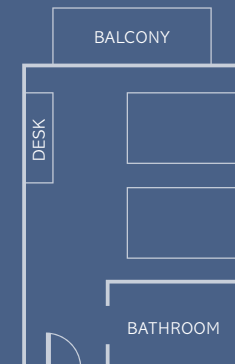




## DOUBLE BED GUESTROOM

*Superior and Deluxe Doubles are Non-Ocean View  
Partial Ocean View and Ocean View Doubles*

- 450 square feet
- Residential feel with Hardwood Floors, Area Rugs and Built-in Entertainment Cabinet
- Two Double Beds
- Bathroom includes Hydrothermal Massage Tub and Separate Shower
- LCD Flatscreen TV and Bluetooth Speaker System
- In-Room Coffee Maker
- Most with Outdoor Balcony



450 SQUARE FEET (not to scale)

  
Shutters  
ON THE BEACH®  
ACCOMMODATIONS



*etc*  
HOTELS

LEGEND  
*Preferred*  
HOTELS & RESORTS



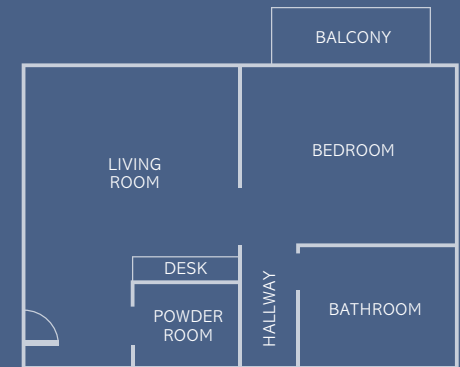
Shutters  
ON THE BEACH®

ACCOMMODATIONS

## SANTA MONICA SUITES

### ONE BEDROOM

- 800 square feet
- Santa Monica City Views (non-ocean view)
- Residential Feel with Hardwood Floors, Area Rugs and Built-in Entertainment Cabinet
- Bedroom features Handcrafted California King Bed
- Bathroom includes Hydrothermal Massage Tub and Separate Shower
- Powder Room
- Living Room with Sleeper Sofa and Work Desk
- LCD Flatscreen TVs and Bluetooth Speaker System
- In-Room Coffee-Espresso Maker
- Outdoor Balcony



800 SQUARE FEET (not to scale)



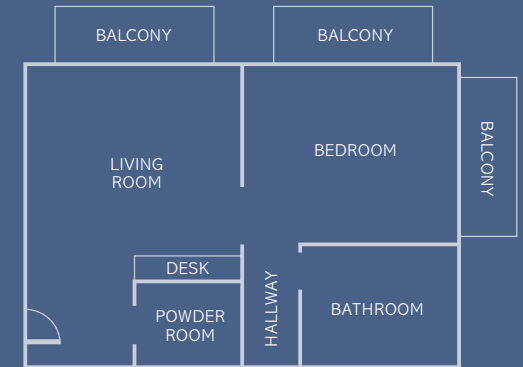




## OCEAN VIEW SUITES

### ONE BEDROOM (OCEAN HOUSE)

- 800 square feet
- Views of the Ocean and California Coastline
- Residential Feel with Hardwood Floors, Area Rugs and Built-in Entertainment Cabinet
- Bedroom features Handcrafted California King Bed
- Bathroom includes Hydrothermal Massage Tub and Separate Shower
- Living Room with Sleeper Sofa and Work Desk
- LCD Flatscreen TVs and Bluetooth Speaker System
- In-Room Coffee-Espresso Maker
- Two Outdoor Balconies



800 SQUARE FEET (not to scale)



## ACCOMMODATIONS



*etc*  
HOTELS

LEGEND  
*Preferred*  
HOTELS & RESORTS

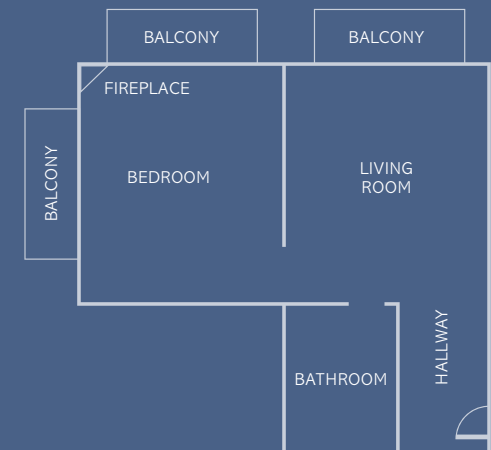




## OCEAN FRONT SUITES

ONE BEDROOM (BEACH HOUSE)

- 800 square feet
- Sits Right Along the Beach Boardwalk with Full Views of the Ocean
- Residential Feel with Hardwood Floors, Area Rugs and Built-in Entertainment Cabinet
- Bedroom features Handcrafted California King Bed and Fireplace
- Bathroom features Hydrothermal Massage Tub and Separate Shower
- Living Room with Sleeper Sofa and Work Desk
- LCD Flatscreen TVs and Bluetooth Speaker System
- In-Room Coffee-Espresso Maker
- Three Outdoor Balconies



800 SQUARE FEET (not to scale)



ACCOMMODATIONS



*etc*  
HOTELS

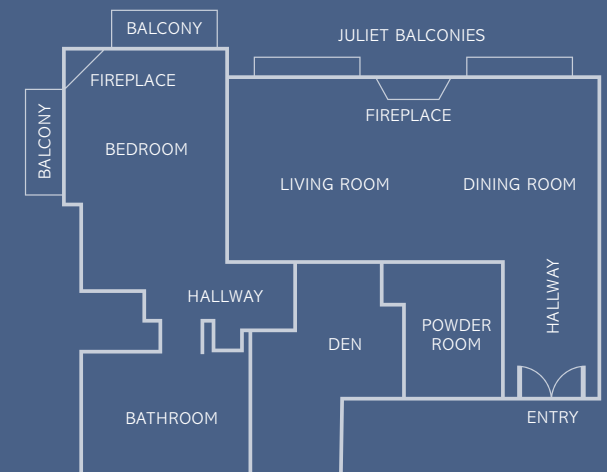
LEGEND  
*Preferred*  
HOTELS & RESORTS



## PACIFIC VIEW SUITE 721

ONE BEDROOM (OCEAN HOUSE)

- 1,350 square feet
- Full Views of the Ocean and California Coastline
- Residential Feel with Hardwood Floors, Area Rugs and Built-in Entertainment Cabinet
- Bedroom features Handcrafted California King Bed and Fireplace
- Bathroom includes Hydrothermal Massage Tub and Separate Shower
- Living Room with Dining Area, Sleeper Sofa and Fireplace
- Separate Den with Work Desk
- LED Flatscreen TVs and Bluetooth Speaker System
- In-Room Coffee-Espresso Maker
- Wet Bar with Wine Fridge
- Powder Room
- Two Outdoor Balconies



1,350 SQUARE FEET (not to scale)

*Shutters*  
ON THE BEACH®  
**ACCOMMODATIONS**



*etc*  
HOTELS

LEGEND  
*Preferred*  
HOTELS & RESORTS

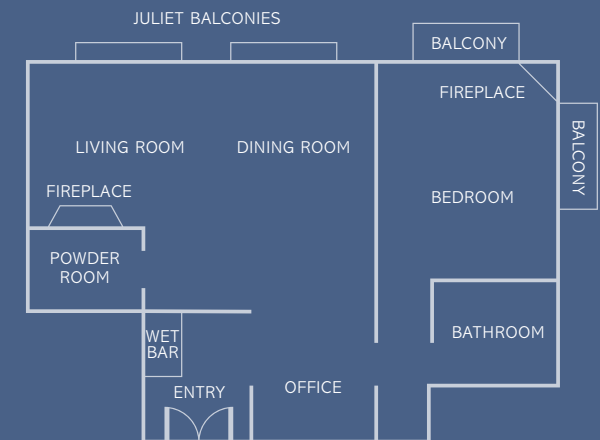




## PACIFIC VIEW SUITE 745

ONE BEDROOM (OCEAN HOUSE)

- 1,350 square feet
- Full Views of the Ocean and California Coastline
- Residential Feel with Hardwood Floors, Area Rugs and Built-in Entertainment Cabinet
- Bedroom features Handcrafted California King Bed and Fireplace
- Bathroom includes Hydrothermal Massage Tub and Separate Shower
- Living Room with Dining Area, Sleeper Sofa and Fireplace
- Separate Den with Work Desk
- LED Flatscreen TVs and Bluetooth Speaker System
- In-Room Coffee-Espresso Maker
- Wet Bar with Wine Fridge
- Powder Room
- Two Outdoor Balconies



1,350 SQUARE FEET (not to scale)



ACCOMMODATIONS



*etc*  
HOTELS

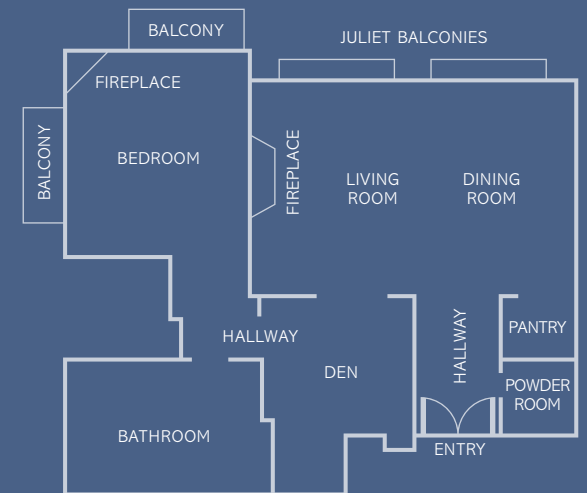
LEGEND  
*Preferred*  
HOTELS & RESORTS



## BEACH HOUSE SUITE

ONE BEDROOM (BEACH HOUSE)

- 1,350 square feet
- Sits Right Along the Beach Boardwalk with Full Views of the Ocean
- Residential Feel with Hardwood Floors, Area Rugs and Built-in Entertainment Cabinet
- Bedroom features Handcrafted California King Bed and Fireplace
- Bathroom includes Hydrothermal Massage Tub and Separate Shower
- Living Room with Dining Area, Sleeper Sofa and Fireplace
- Separate Den with Work Desk
- LCD Flatscreen TVs and Bluetooth Speaker System
- In-Room Coffee-Espresso Maker
- Pantry with Refrigerator, Freezer, Wine Fridge and Microwave
- Powder Room
- Two Outdoor Balconies



1,350 SQUARE FEET (not to scale)



ACCOMMODATIONS



*etc*  
HOTELS

LEGEND  
*Preferred*  
HOTELS & RESORTS





PACIFIC TERRACE

*Photo credit: Amy & Stuart Photography*



GRAND SALON BALLROOM & FOYER



PROMENADE



BEACHSIDE & OCEANSIDE

## EVENT SPACES

OUR INDOOR AND OUTDOOR EVENT SPACES ARE PERFECT FOR YOUR MEETING, WEDDING OR SOCIAL OCCASION... JUST STEPS FROM THE SAND







Photo credit: Asgeir Fotografica

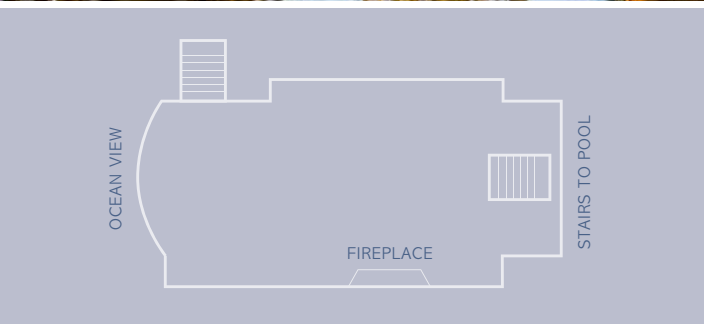


Photo credit: Amy & Stuart Photography



## EVENT SPACES

### PACIFIC TERRACE

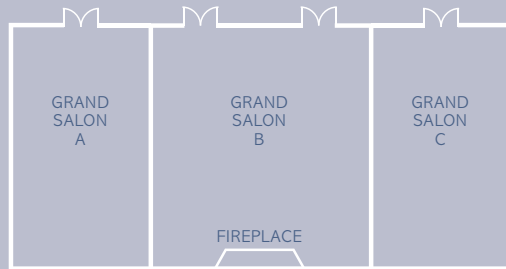
Offering panoramic ocean views and a breathtaking backdrop for Cocktail Receptions, Dinners and Wedding Ceremonies

- Outdoor Fireplace
- Heaters Available
- Acoustic music only
- City Ordinance 9:00 p.m. end time for outdoor events

ROOM	DIMENSIONS	SQ FT	VIEW	CEILING	ROUNDS	THEATER	RECEPTION
Pacific Terrace	72.9' x 16.2'	1175	Beach & Ocean	The Sky	130	200	250







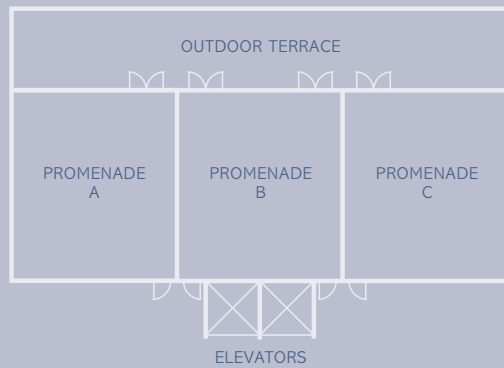
## EVENT SPACES

## GRAND SALON BALLROOM & FOYER

The Grand Salon Ballroom features a fireplace and can be divided into three sections to accommodate large and smaller-sized groups. The spacious foyer is perfect for receptions, breaks or meal displays.

ROOM	DIMENSIONS	SQ FT	CEILING	CLASSROOM	CONFERENCE	SQUARE	U-SHAPE	ROUNDS	THEATER	RECEPTION
Grand Salon	81' x 47'	3807	9	216	60	80	60	270	380	400
Salon A	22' x 47'	1034	9	55	30	44	38	60	110	100
Salon B	36.8' x 47'	1725	9	80	30	54	44	90	160	100
Salon C	22' x 47'	1034	9	55	30	44	38	60	110	100





## EVENT SPACES

### PROMENADE

Promenade features an abundance of natural light and an adjoining outdoor terrace. The room can be divided into three sections, allowing more flexibility for you and your guests. The private outdoor terrace is perfect for cocktail receptions or meals.

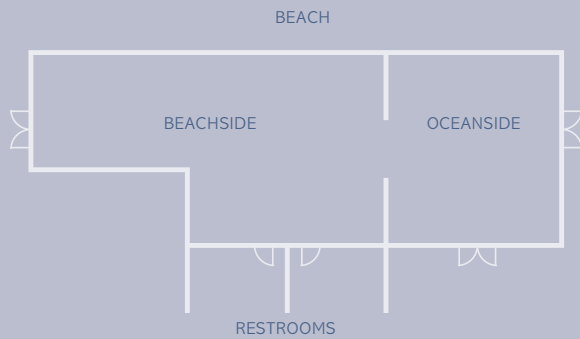
ROOM	DIMENSIONS	SQ FT	CEILING	CLASSROOM	CONFERENCE	SQUARE	U-SHAPE	ROUNDS	THEATER	RECEPTION
Promenade	76' x 22'	1672	9	75	40	64	60	130	140	150
Promenade A	27.8' x 22.11'	586	9	27	27	28	24	40	60	40
Promenade B	27.8' x 24.7'	679	9	39	21	30	27	44	70	50
Promenade C	21.5' x 22.3'	477	9	27	27	28	24	40	60	40







Photo credit: Brian Tropiano Weddings



## EVENT SPACES

## BEACHSIDE & OCEANSIDE

Beachside and Oceanside sit right along the beach boardwalk, offering natural light and windows that open. The rooms adjoin and can be used together or separately. Feel the ocean breeze and experience the closest thing to being right on the sand...

ROOM	DIMENSIONS	SQ FT	CEILING	CLASSROOM	CONFERENCE	SQUARE	U-SHAPE	ROUNDS	THEATER	RECEPTION
Beachside	54'10" x 23'4"	1279	7	36	40	40	40	90	60	100
Oceanside	18'6" x 27'3"	504	7	18	20	26	20	40	40	30





1 PICO



COAST



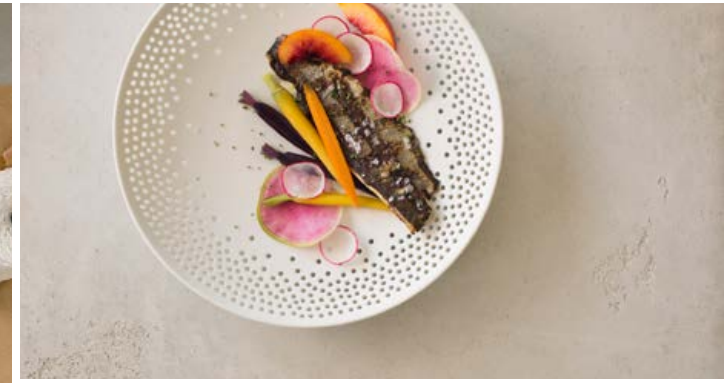
LOBBY LOUNGE

## DINING

OFFERING BREATHTAKING VIEWS OF THE OCEAN, OUR RESTAURANTS  
FEATURE REFINED FOOD IN A RELAXED SETTING.





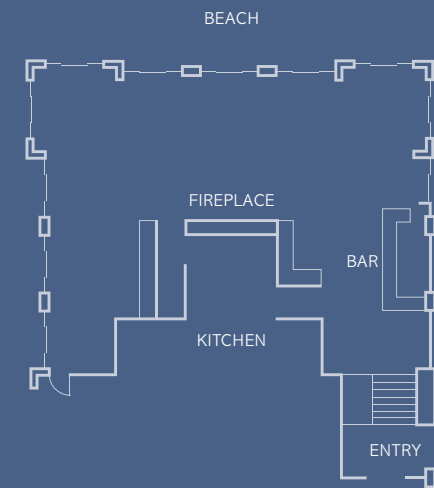


## DINING

### 1 PICO

Perched above the beach, with a seasonal market menu and a unique wine list, 1 Pico is an address you'll always remember.

- Open for lunch and dinner daily, including weekend brunch
- Seats up to 90 guests
- Available for buy-outs





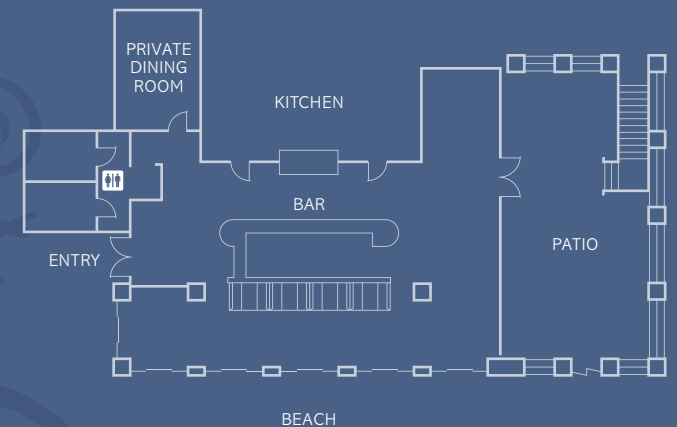


## DINING

### COAST

Coast is a casual beachfront café and bar. Chilled Chardonnay, spicy guacamole and warm tortilla chips await; imaginative chefs and California-inspired dishes will put you in a coastal state of mind.

- Open for breakfast, lunch and dinner daily
- Private Dining Room seats 12 guests
- Outdoor heated patio seats up to 50 guests and is available for buy-outs





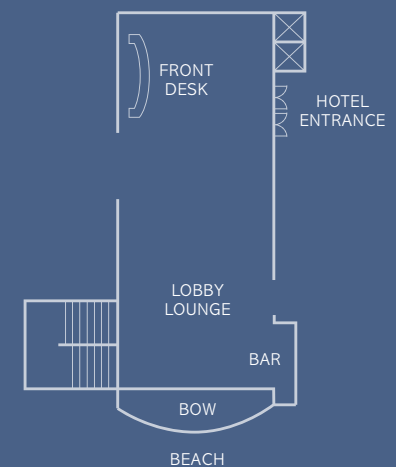


## DINING

### LOBBY LOUNGE

It's a bar, it's a lounge, it's a meeting place...with spectacular views of the Pacific Ocean. Surrounded by notable art and warm furnishings, the Lobby Lounge is *the* Happy Hour spot in Santa Monica.

- Open daily from 11:00am
- Seating on a first come basis
- Features an outdoor terrace
- Live Music Nightly







ONE SPA



FITNESS CENTER

## SPA & FITNESS

OUR SPA AND FITNESS CENTER ARE LUXURIOUS WAYS TO MAKE WELLNESS A PART OF YOUR LIFE WHILE YOU ARE IN SANTA MONICA.







## SPA & FITNESS

### ONE SPA

ONE Spa features six multi-purpose treatment rooms – including a pair of wet rooms and an additional room for manicures and pedicures. The interior is crisp and ship-shape, recalling the romantic era of the 1930s yachting scene. Natural woods and stone combined with subtle tones of sand and sea evoke the healing powers of the Pacific.

- Featuring custom treatments by Kerstin Florian, Luzern, Hydropeptide and Omorovicza
- Designed by Michael Smith
- [Spa Menu](#)







SPA &  
FITNESS

## FITNESS CENTER

Featuring cardio equipment, resistance machines and free weights, our comprehensive fitness center has everything you need to maintain your workout routine.

- Yoga classes on the beach
- Mindful meditation sessions
- Surf lessons, bicycle rentals



*etc*  
HOTELS

LEGEND  
*Preferred*  
HOTELS & RESORTS





THE POOL



BEACH CONCIERGE



EVENTS ON THE BEACH

## POOL & THE BEACH

OUR POOL AND HEATED WHIRLPOOL FEATURE CABANAS AND FULL POOLSIDE SERVICE. OF COURSE, IF YOU PREFER THE BIGGER POOL, IT'S LOCATED JUST BEYOND THE SAND.





## POOL & THE BEACH



## THE POOL

Our pool and heated whirlpool feature cabanas and full poolside service.

- Open seasonally 6:00 am to 10:00pm





POOL &  
THE BEACH

## BEACH CONCIERGE

Our friendly beach concierge is here to assist with your every need. They can arrange for beach chairs and umbrellas, bicycle rentals, surf lessons or boogie boards. Offering a beachside refreshment menu, they will serve you right on the sand.



*etc*  
HOTELS

LEGEND  
*Preferred*  
HOTELS & RESORTS



POOL &  
THE BEACH

## EVENTS ON THE BEACH

Wedding ceremonies and meetings are permitted on the beach in front of the hotel, on a first come, first serve basis. Our Catering and Events Team is happy to assist you and your planner in arranging all the details for your breathtaking beach event.

[Events on the Beach](#)







PSAV AT SHUTTERS

## AUDIO VISUAL

PSAV OFFERS THE LATEST AUDIOVISUAL EQUIPMENT AND INNOVATIVE EVENT TECHNOLOGY SERVICES, SUCH AS DEVELOPING CUSTOMIZED MOBILE EXPRESS APPS FOR SMART PHONES, GLOBAL VIDEO CONFERENCING, AND EXTENDED BANDWIDTH FOR YOUR MEETING OR EVENT.

### PSAV CONTACT

Hector Villalobos, Director of Audio Visual Services  
PSAV Presentation Services  
hvillalobos@psav.com 310.587.1792



*etc*  
HOTELS

LEGEND  
*Preferred*  
HOTELS & RESORTS





# MEDIA

WE CONTINUE TO MAKE HEADLINES.

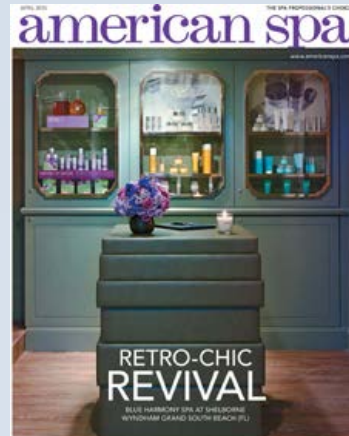






TRAVEL+  
LEISURE

goop



COASTAL  
LIVING

BRIDES



2016  
**Forbes**  
TRAVEL GUIDE



the knot

TOWN&COUNTRY



ARCHITECTURAL DIGEST



etc  
HONEYMOON

LEND  
Inspired  
WEDDINGS