

Media Contact

Jonathan Bauer

The Tower Companies

Jonathan.Bauer@towercompanies.com

301-984-7000

Symphony Chau

Center for Active Design

symphony.chau@centerforactivedesign.org

212-227-2831

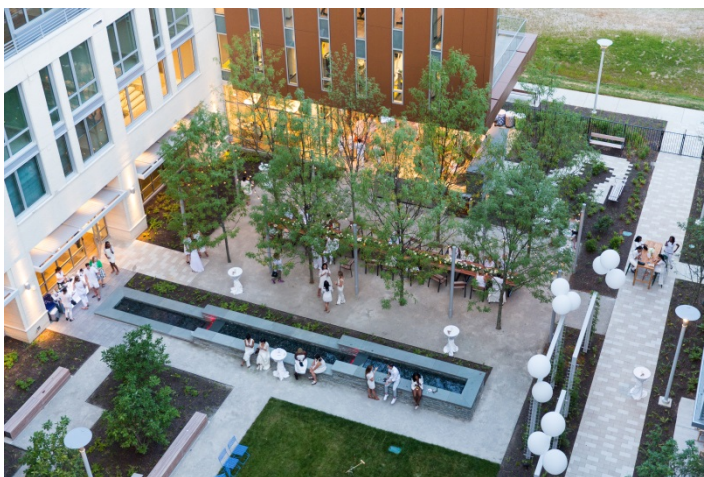
FOR IMMEDIATE RELEASE

The Tower Companies Receives the First Fitwel Residential Certification in the World from the Center for Active Design

The Pearl in metro Washington D.C. enhances resident health and wellbeing, becoming the first-ever multifamily residential building certified globally.

Rockville, MD (May 2, 2018) – Washington, D.C. based real estate developer and recognized sustainability leader, The Tower Companies, announced today that it has achieved the first-ever Fitwel certification for a multifamily residential building. This exemplary designation was awarded to [The Pearl, a premier luxury apartment community in downtown Silver Spring, Maryland](#), receiving a 2 Star Fitwel Rating from the Center for Active Design (CfAD), the operator of Fitwel.

The Fitwel Certification System fosters positive impacts on occupant health and wellbeing through improvements to building design and operations. Developed by experts in public health and design, including the U.S. Centers for Disease Control and Prevention (CDC) and the General Services Administration (GSA), Fitwel is a cost-effective, high-impact, and evidence-based building certification system.



The Pearl received a 2 Star Fitwel Rating by incorporating nearly 50 unique evidence-based design and policy strategies that support the physical, mental, and social health of its residents. One such strategy is providing ample open and green space for residents to stay active, unwind, and connect with their community. These outdoor spaces include a courtyard with restorative gardens, a playground, fitness equipment, an urban farm, and more health-promoting amenities.

The Pearl also invites residents to breathe easy as a tobacco, vapor, and smoke-free community, in addition to having a stringent indoor air quality policy. Elevators are not

in sight upon entering The Pearl, where instead, a glass stairwell encourages residents to climb the stairs and develop everyday habits that lead to better health. Friendly reminders are also in place at all elevator call areas promoting the health and environmental benefits of taking the stairs.



“Our goal was to design The Pearl with elements that promote an active lifestyle and enrich people’s lives by giving them a sense of still and calm,” said Jeffrey Abramson, partner at The Tower Companies. “The Pearl is a home, a place where anyone can live a healthy, balanced, and full life with little effort. The Fitwel Certification System has given us the tools to greatly enhance that experience for our residents.”

“We applaud The Tower Companies for their industry leadership as the first entity to certify a multifamily residential building with Fitwel,” said Lisa Creighton, Vice President of Development and Strategy at the Center for Active Design. “The Pearl marks a major milestone for Fitwel’s ability to positively impact resident health, setting a high bar for how the development community can integrate health-promoting design and operational strategies within their multifamily projects.”

Tower, a [Fitwel Champion](#) as of January 2018, is committed to certifying more properties across its portfolio using the Fitwel Certification System. The company will now shift its focus to certifying its commercial office properties in Maryland for the next phase of this work.

About The Tower Companies:

For three generations, the family-owned Tower Companies has maintained a commitment to responsible development and continues to envision a world where buildings inspire and enrich the lives of their occupants and create positive social change. The sustainable building leader owns, develops, and manages over 5 million square feet in the Washington, D.C. metropolitan area consisting of office buildings, office parks, lifestyle centers, regional malls, eco-progressive live-work-play communities and hotels, with an additional 8 million square feet in the development pipeline. In 2004, The Tower Companies was the first in the United States to achieve LEED® certification at a multi-family community, Blair Towns, and since then, 90% of their commercial and multi-family residential properties are LEED® and ENERGY STAR® certified. In addition, Tower publically reports GHG emissions to The Climate Registry and offsets 100% by purchasing renewable energy and carbon credits. Through a partnership with the Department of Energy, The Tower Companies pledged to reduce energy and water consumption 20% by 2020; Tower surpassed those targets in 2017. The Tower Companies is an international authority in the industry, and has

been recognized for its commitment to sustainability and energy independence by numerous national organizations and federal agencies, including the US Green Building Council, US Department of Energy (DOE), US Environmental Protection Agency, and more. Learn more at www.towercompanies.com.

About Center for Active Design and Fitwel:

The Center for Active Design, an international non-profit that uses design to foster healthy and engaged communities, was awarded the exclusive operating license in 2016 with the mandate to expand Fitwel globally to the private sector. Fitwel is the world's leading certification system that optimizes buildings to support health. Generated by expert analysis of over 3,000 academic research studies, Fitwel is implementing a vision for a healthier future where all buildings and communities are enhanced to strengthen health and wellbeing. Fitwel was created as a joint initiative led by the U.S. Centers for Disease Control and Prevention together with the General Services Administration. Twitter: @active_design + @fitwel

