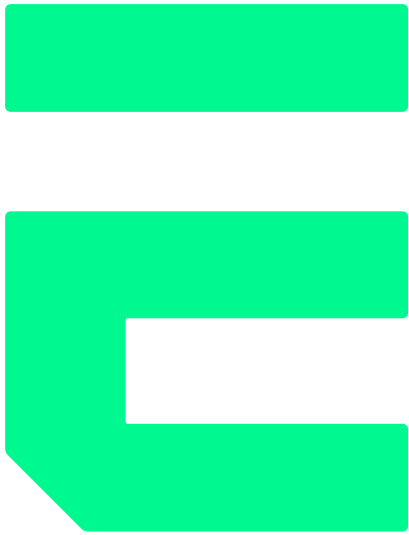


Quality Care Precision. Now even cooler.

Cooling & heating: our complete offer to enjoy summer
freshness and winter warmth

Distributed by LKQ Euro Car Parts



Magic drives

From our roots dating back to 1936 to our market launch in 2024, Emotive has always been the leading platform for automotive aftermarket solutions with a passionate commitment to customer satisfaction.

From braking systems and chassis components to cutting-edge fluids and electronics, Emotive offers top-quality products, services, and sustainable innovation.

Welcome to the leading automotive aftermarket platform.

ERA



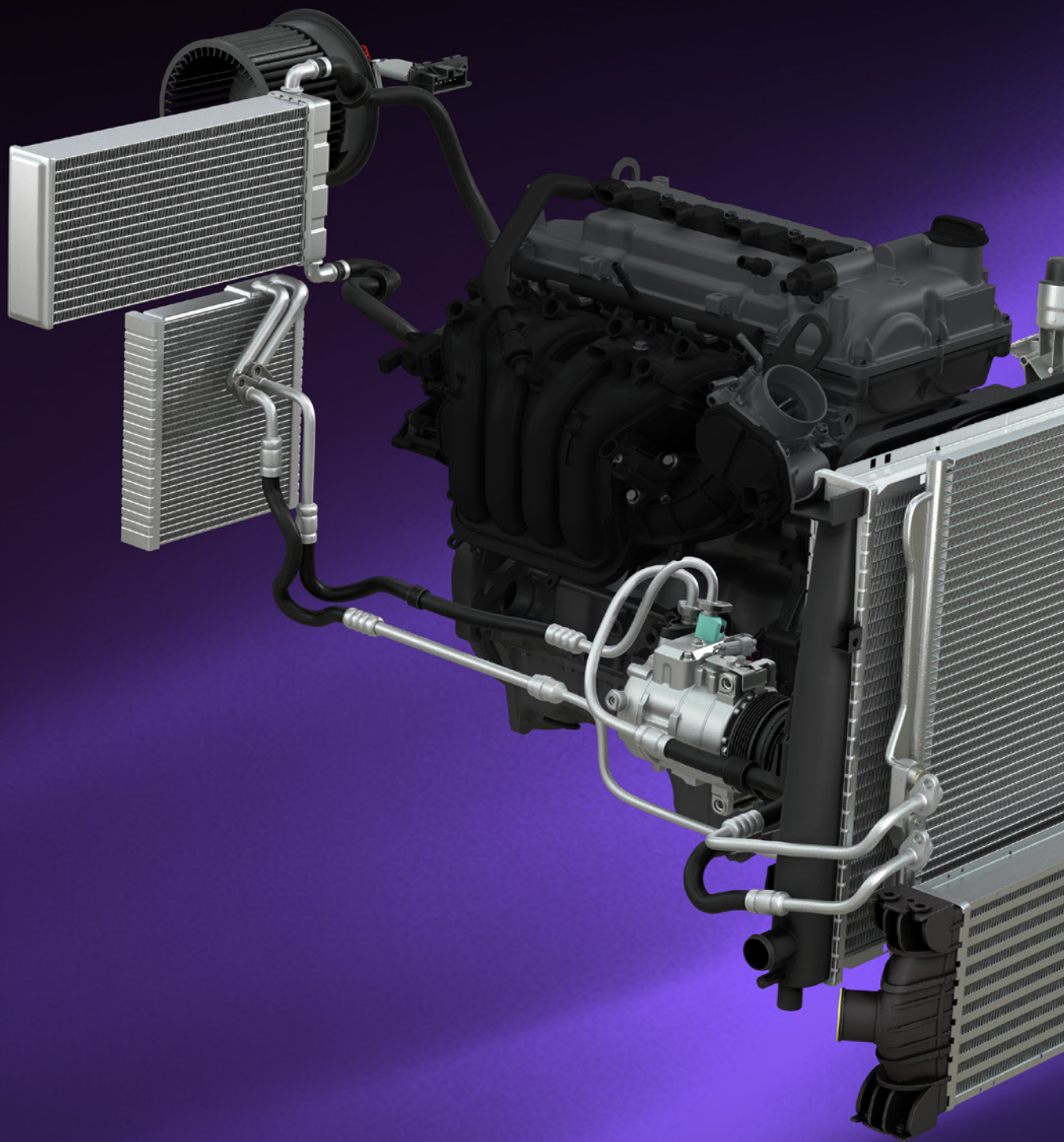


Quality. Care. Precision.

We've been a driving force in the automotive aftermarket for more than 40 years, distributing quality spare parts across more than 80 countries.

With a portfolio boasting over 15,000 references, we serve as a beacon of quality and reliability, expanding our offering of electrical, electronic, cooling, and heating components with comprehensive product ranges. Committed to precision, quality, and speed, we stand as a trusted partner for customers, distributors, and suppliers.

Our essence is captured in three powerful words: **QUALITY** products, **CARE** in selecting suppliers and developing our product range, and **PRECISION** in delivery and customer service. Each of these core values characterizes ERA's identity.





An offer that just got cooler

ERA continues to drive innovation and develop its expertise. We've strengthened our footprint in thermal systems, broadening our product range to meet a fast-evolving market.

We took a bold step forward by expanding into advanced thermal management systems — delivering more comprehensive and high-performing solutions for temperature control across the entire vehicle.

By extending our skills into the thermal segment, we're reaffirming our commitment to excellence, delivering trusted quality and reliability to partners worldwide.

This strategic evolution opens a new chapter for ERA, raising the bar in thermal systems and confirming our role as a benchmark in the automotive sector.

The details that make the difference

Superior quality

Premium standards, top-grade materials, and smart features you can trust — for easy installation, lasting durability, and outstanding performance, every time.

Tested to withstand it all

Each of our products undergoes extreme testing: from thermal shocks and real-world pressure to helium, salt spray, and vibration testing.

Always evolving

Our range continues to grow with new SKUs, keeping it perfectly in step with market needs.

Coverage that drives confidence

With 10 dedicated heating & cooling product lines, we cover the main car manufacturers of the European car parc, delivering performance, comfort, and trust for almost every vehicle on the road.

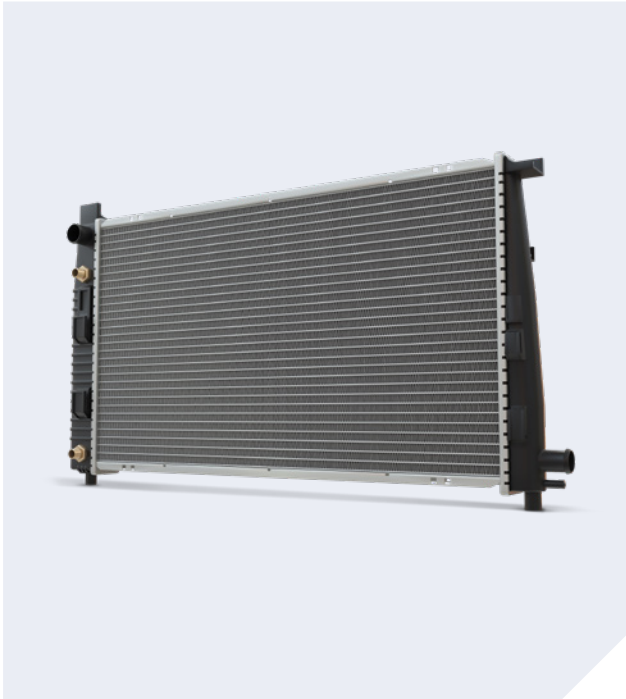
Ready to install

Every cooling & heating product comes complete with all the components you need — for quick, easy, trouble-free assembly.

Sustainable packaging

Made with 50% recycled materials and fully recyclable. A smarter choice for the planet, built into every box.

The thermal heart of every journey






Radiators:

In managing engine temperature, radiators play a key role in maintaining the smooth operation of the entire system. They need to deliver efficiency and durability, mile after mile. That's why quality materials and accurate mechanical design are essential. ERA radiators, developed to match OE standards, guarantee optimal cooling, covering a wide spectrum of vehicle applications across the European car parc.

Key features of ERA's range include:

- Brazed technology.
- Burst tested over 3.6 bar and proven under pressure and thermal shock.
- Dimensionally checked to ensure flawless fitting.
- Fully equipped right out of the box.

Accessories included	Brazed technology	Leak-tested	Certification
			-

Small part, big engine protection



Thermostats:

In the game of regulating temperature and performance, thermostats play a key role by managing refrigerating fluids. A small part with a great responsibility; this is why quality is a must. Our components' opening values are carefully balanced to avoid severe engine damage. ERA's complete range, designed to meet modern technological demands, offers a complete choice covering the needs of the European car parc.

Key features of ERA's range include:

- Testing for a precise opening temperature.
- Top notch materials for reliability and long-term efficiency.

Accessories included	Brazed technology	Leak-tested	Certification
-	-	-	-

Outstanding performance, wherever the road takes you to



Intercoolers:

In the combustion process, cooling air is key. To boost engine efficiency, intercoolers are essential. With constant exposure to high temperatures and fluctuations, they must ensure strength, reliability, and consistent performance. Meeting these demands requires high-quality materials, optimal thermal efficiency, and OE-standard design — ensuring durability and resistance to everyday stress without compromise.

Key features of ERA's range include:

- Brazed technology.
- Thermal performance that matches the original.
- Vibration, pressure, and temperature shock tested to handle real-world stress.
- 5-bar pressure certified.

Accessories included	Brazed technology	Leak-tested	Certification
-			

Thermodynamic balance, reduced emissions



EGR valves:

EGR valves play a key role in controlling pollutant emissions and improving exhaust system efficiency. Operating under extreme conditions — including corrosive gases and high temperatures — they must ensure reliability, precision, and long-lasting performance. Consistent functionality over time requires high-resistance materials, quality components, and OE-standard design, able to withstand the stresses of everyday driving.

Key features of ERA's range include:

- Available with or without cooling modules, covering all repair needs
- Each valve comes complete with the right gaskets
- Engineered for durability and performance.
- Made to the highest manufacturing standards for total reliability.

Accessories included	Brazed technology	Leak-tested	Certification
	-	-	-

Enhanced comfort, unmatched efficiency



Compressors and spare parts for compressors:

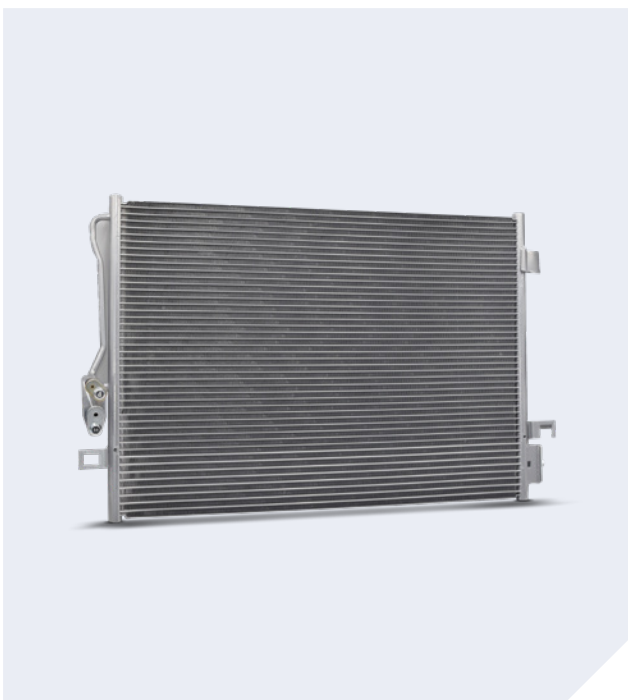
At the heart of the air conditioning system, the compressor is the engine of comfort. Subject to constant stress — like high pressure, elevated temperatures, and continuous vibrations — they must deliver strength, efficiency, and reliability every day. Long-lasting, uncompromised performance demands high-quality materials, precise engineering, and OE-compliant design, ensuring a comfortable climate even in the most extreme conditions.

Key features of ERA's range include:

- Each part 100% vibration and noise tested.
- Each part comes complete with O-Rings and seals, pre-filled with OE-spec oil.
- 100% leak-proof and crafted under ISO IATF 16949 standards.
- Wide range available covering all market needs.

Accessories included	Brazed technology	Leak-tested	Certification
	-		

Cool climate control and seamless fitting



Condensers:

In the air conditioning system, condensers cool the refrigerant by converting hot gas into liquid, enabling effective fluid circulation. ERA condensers offer high thermal exchange capacity, robust construction, and precise fitment, ensuring reliable performance and optimal climate comfort in every season and driving condition.

Key features of ERA's range include:

- Wide coverage of the entire EU car parc.
- Our products included O-rings, sealings, and blanking plugs for an effortless, ready-to-go installation.
- IATF 16949-certified and rigorously tested.
- Tough salt spray, fatigue, and strength tests ensure maximum durability, while 100% Helium leakage testing guarantees zero leaks.

Accessories included	Brazed technology	Leak-tested	Certification
	-		

Boosted cooling. Maximum control.



Radiator fans:

Heating and cooling is not just about radiators, thermostats and heat exchangers. When engine needs some extra help cooling down, especially in traffic and very hot situations, radiator fans bring the extra boost it takes, forcing additional air through the radiator and into the engine bay.

Key features of ERA's range include:

- Reliable electric motor armatures that protect against current peaks and overvoltage for smooth, safe operation.
- Special REACH-compliant, anti-corrosive treatment on the motor cover
- Electromagnetic disturbance shields.

Accessories included	Brazed technology	Leak-tested	Certification
-	-	-	-

Small parts, pure freshness



Dryers and expansion valves:

Managing cabin temperature demands a complex web of components, with even the smallest playing a critical role. Dryers and expansion valves are constantly cleaning, de-moisturing, storing and metering the refrigerant of the air conditioning system with one purpose: making each journey a pleasure, whatever the weather outside.

Key features of ERA's range include:

- Leak tested against any gas or oil failure.
- Quality checked for perfect gas metering.

Accessories included	Brazed technology	Leak-tested	Certification
-	-		-

A breath of fresh air that moves with you



Interior blowers:

At the heart of driving comfort, interior blowers ensure steady, well-distributed airflow throughout the vehicle. Designed for quiet operation, efficiency, and durability, they must withstand constant start-stop cycles and varying environmental conditions. ERA interior blowers combine cutting-edge technology with high-quality materials, balancing performance, acoustic comfort, and reliability for a pleasant driving experience in every season.

Key features of ERA's range include:

- Coverage of the entire European car parc.
- Tested in extreme temperatures, ensuring flawless, long-lasting performance.
- Fully compatible connectors and OE-spec sizing.
- Rigorously tested to eliminate noise and vibration.

Accessories included	Brazed technology	Leak-tested	Certification
	-	-	-

The invisible link that drives your cabin climate



Interior blower resistors:

Cabin temperature management requires a precise control of air flow and interior blower resistors, which is a direct connection to the driver's input. With this, the interior blower can vary its speed, according to the required performances.

Key features of ERA's range include:

- Temperature and vibration tested.
- Fully compatible with the OE.

Accessories included	Brazed technology	Leak-tested	Certification
-	-	-	-



Powerhouse brand line-up

Discover the transformative power of our unified brand platform, where each brand embodies quality, innovation and trustworthiness, always delighting in meeting the evolving needs of our customers and partners.



Euro Car Parts Ltd
Birch Coppice Business Park,
Danny Morson Way, Dordon,
Tamworth B78 1SE

