

STANWELL COMMUNITY NEWS

TARONG POWER STATIONS AND MEANDU MINE



WELCOME TO THE APRIL 2026 EDITION!

Read about:

- Tarong's big battery commences commercial operations
- Meandu Mine's King 2 East Project secures Federal approval
- Future energy workforce powers up at Tarong
- Safeguarding our fishy friends

FROM OUR GENERAL MANAGERS

Welcome to the first edition of the Tarong power stations and Meandu Mine Newsletter for 2026.

Rainfall across the South Burnett earlier this year was a welcome change for many in our region. The rain has helped replenish dams, refresh pastures and provide a much-needed boost for local crops. During the wet weather events we work closely with the South Burnett Regional Council's Local Disaster Management Group to support the region, and those who suffered flood damage to fencing and road access.

For the latest road conditions and weather updates during periods of heavy rain, we encourage residents to visit the South Burnett Disaster Dashboard on the South Burnett Regional Council website.

Operations and Projects

Planning for Unit 3 major outage, scheduled from August to November 2026, is progressing well following a busy period of maintenance outages across the site. These outages are an important part of ensuring our generating units continue to operate safely and reliably.

A major milestone for Tarong power stations is the Tarong Battery, Stanwell's first wholly owned battery,

which began commercial operations in February. The 300 MW battery increases our site's total capacity to 2.1 GW, making it the largest single power generation site in Queensland. The battery stores excess energy and releases it back to the energy grid when demand is high, helping support Queensland's evolving energy system.

People and Milestones

Over the past few months, we welcomed a new intake of apprentices, trainees and graduate engineers. This year Tarong welcomed seven new local apprentices and trainees across mechanical, electrical, administration and laboratory roles. Programs like this help create employment opportunities close to home for young people and develop the next generation of skilled workers in regional Queensland.

Meandu Mine Update

Following a competitive tender process, Golding Contractors Pty Ltd has been selected to operate Meandu Mine under a new Mining Services Agreement from 1 July 2026.

A transition period will now begin to ensure continuity of operations and minimal disruption to operations, employment and local suppliers.

Meandu Mine will continue supplying coal to the Tarong power stations, supported by ongoing exploration and the King 2 East expansion project, which has recently received Commonwealth environmental approval. This will ensure a secure and reliable fuel supply for Tarong Power Stations into the future.

Looking Ahead

The teams at Tarong power stations and Meandu Mine remain committed to operating safely and reliably while supporting the South Burnett and surrounding communities. With new projects underway and the next generation of employees joining our workforce, we look forward to a safe and productive year ahead.

Kind regards

Mick Joy and Andrew Toms

General Manager, Southern Generation and General Manager, Mining



WATT A MILESTONE! TARONG'S BIG BATTERY COMMENCES COMMERCIAL OPERATIONS

We've reached an exciting milestone with the Tarong Battery now officially up and running and supplying electricity to the National Electricity Market!

The 300 MW, two hour duration battery is Stanwell's first dispatchable energy storage project and is made up of 164 lithium-ion Tesla Megapacks.

The Tarong Battery charges by drawing energy from the grid when electricity generation is high and releases it back into the grid when generation is low or demand is high, helping to maintain grid stability.

Operating as an independent dispatchable unit within the National Electricity Market, the battery boosts Tarong power stations' overall capacity to 2.1 GW, enhancing its standing as the largest generating site in Queensland.

After two and a half years, this achievement is a true testament to the dedication of the Stanwell project team, who have worked tirelessly since the project began in August 2023.

Find out more:



The battery is located onsite at Tarong power stations.

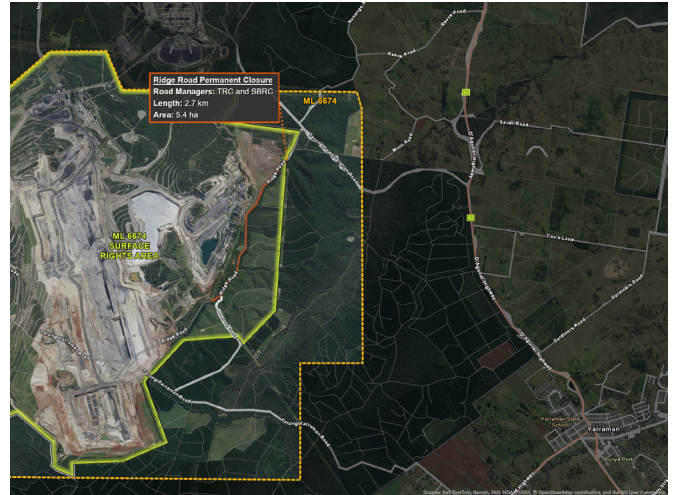
MEANDU MINE'S KING 2 EAST PROJECT SECURES KEY FEDERAL APPROVAL

In early 2026, Meandu Mine's King 2 East (K2E) Project reached a significant milestone with the Commonwealth Department of Climate Change, Energy, the Environment and Water (DCCEEW) granting approval under the Environment Protection and Biodiversity Conservation (EPBC) Act.

Stanwell has been progressing a number of State and Commonwealth approvals and other activities in relation to the project for more than four years and this decision marks a major step toward ensuring the long-term reliability and affordability of Queensland's energy supply.

Our Tarong power stations, which provide around 20 per cent of Queensland's total energy needs are among the most reliable in the National Electricity Market (NEM) and play an important role in keeping energy affordable and reliable.

As Meandu Mine is operated for the sole purpose of supplying thermal coal to the adjacent Tarong power stations, the K2E project is vital to maintaining coal supply to the power stations now and into the future, ensuring reliable energy supply.



The K2E Project aims to expand Meandu Mine's operational area by around seven percent (187 hectares) within the existing lease boundary. With EPBC approval now in place, Stanwell will progress the remaining regulatory steps (including the closure of a section of Ridge Road) with mining expected to commence in the K2E area in this year.

Early works commenced in March 2026, in preparation for mining in the King 2 East project area as planned for October 2026.

From April 2026, a section of Ridge Road within the King 2 East Additional Surface Area will be closed (see map above). The required approvals from the State Government and permits from Toowoomba and South Burnett Regional Councils are being finalised, and appropriate infrastructure and signage will be installed to clearly indicate to the public that the road is closed.



Read more about Meandu Mine:



WELCOMING OUR NEWEST BRIGHT SPARKS

Our newest bright sparks are kicking off their careers as mechanical fitter and electrical apprentices, alongside business administration and laboratory technique trainees.

They're gaining hands-on experience, industry-recognised training, and being mentored by our incredible people as they step into roles that will shape Queensland's energy future.

Developing a strong pipeline of skilled local talent is vital to ensuring our operations continue to thrive and support our local communities.

The Apprenticeship and Trainee Program is just one of the many pathway programs we offer at Stanwell, supporting people to build valuable skills and experience in the energy industry, with a strong focus on long-term development, practical learning and career progression.



Find out more about careers at Stanwell:



REEL TALK: SAFEGUARDING OUR FISHY FRIENDS

At Tarong power stations, the Meandu Creek and the cooling water dams are home to a diverse range of aquatic life, from Macquarie River Turtles and Australian Bass to Freshwater Shrimp and Bony Bream.

Every year, our Environmental team carries out their fish survey in both the creek and the dams, to assess the state and health of the ecosystem, determine the demographic and health of the aquatic life, and monitor the presence of pests and invasive species.

The surveys are an important part of our Health, Safety and Environmental Management System, as we actively work to

ensure sustainable practices that protect our environment and social licence to operate.

The process provides our Environment team with a clear picture of our dam's physical habitat and ecology, allowing us to better understand the aquatic life that call our Tarong power stations home, and ensure their sustainability into the future.


Check out this video of the fish surveys in action:




STAY INFORMED AND SIGN UP

Join our notification list to receive timely updates about our planned activities to manage pests, hazard reduction burns and scheduled mine blasts. Your awareness and feedback help us ensure that we continue to operate responsibly and with respect for the people and environment around us.

If you have any questions or concerns, please feel free to reach out to the Stanwell Stakeholder Engagement Team.

 Call us on 0456 611 933, Monday to Friday. For urgent matters outside of business hours, please contact the Tarong Power Station Security office at 4160 9260 or Meandu Mine Security at 4160 7211.

 Email us at southernengagements@stanwell.com. Whether it's a quick enquiry or something more detailed, we'll respond as quickly as possible.



Did you know? You can receive Stanwell's community news in your inbox! Sign up for electronic newsletters by emailing southernengagements@stanwell.com

About Stanwell

Stanwell is Queensland's leading provider of electricity and energy solutions to the National Electricity Market, and large energy users along the eastern seaboard of Australia.

With over 40 years of continuous operations, Stanwell maintains a reliable supply of power from two of the most efficient and reliable coal-fired power stations in Australia – the Tarong power stations near Kingaroy and Stanwell Power Station near Rockhampton.

Stanwell's experience working with communities to build, operate and maintain reliable energy generation assets like our coal-fired power stations is also being applied to progress the development of renewable generation, storage, and firming projects to support Queensland's future energy needs.

Stanwell acknowledges the traditions and cultures of First Nations people, and recognises their continuing connection to land, water and community where we live and work. We respect and honour their Elders, past, present and emerging, and we commit to providing the spark for a bright future together.