

You want your community to be vibrant, prosperous, and inclusive, and so do we!

Stanwell plays an active role in the communities that host our assets and we work closely with community members in the South Burnett to build a strong, long-term future for the region. We do this by listening, learning and responding to the community's diverse perspectives and priorities, and providing support to important community projects via Stanwell's Social Investment programs such as the **Tarong Community Partnership Fund**.

The Fund is dedicated to helping projects that:

- Build social connectedness
- Lead to increased employment
- Improve access to critical services
- Enhance educational opportunities
- Build economic capacity, preparedness and resilience in the South Burnett Communities.

Shady days at Nanango & District Netball

The Nanango & District Netball Association, who with the support of the Tarong Community Partnership Fund, were able to purchase and install eight permanent shade sails at the Nanango netball grounds.

The club president Katie Mangan explains "We used to have removable shade sails that took quite a while to put up and take down, but since they were damaged a decade ago, we haven't had any sort of shade available there."

"Now, with this funding, we're able to provide shade at all times for our spectators and for the players on the bench and ensure that attending a game here is sun-safe and comfortable."

Katie says the shade sails will also be enjoyed by the wider community, who use the facility for a variety of purposes.

"The netball facility isn't just used by the Netball Association," she explains. "Local schools also play their games and run after-school activities here. And people come here to use our flexi-surface courts for all sorts of reasons, from roller skating to dog walking. It's a community facility that anyone can use."

The Nanango & District Netball Association President, Katie, encourages all community groups in need of support for eligible projects to apply for the Tarong Community Partnership Fund.

"Stanwell's support for our Nanango and wider South Burnett community makes a real difference," she says. "I'd definitely recommend anyone who's working on a worthwhile project to put their hand up, because it's been great for us."



With the weather warming up and conditions changing, we urge you to keep up to date with the current fire danger rating and bushfire warnings.

Don't ignore the bushfire risks, mitigate and prepare today.

- Remove excess or high-risk fuel loads from around your property
- Remove overgrown vegetation around homes
- Construct fuel breaks and fire access trails
- Mow your lawn regularly
- Trim overhanging branches
- Remove flammable materials

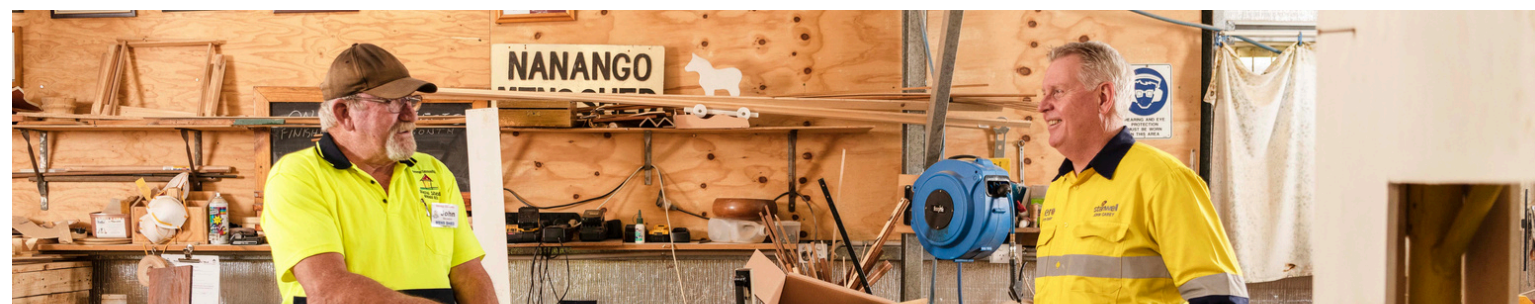
For more information and resources, visit the Get Ready Queensland website: <https://www.getready.qld.gov.au>

For the latest warnings and alerts in our region, visit the Emergency Dashboard <https://dashboard.southburnett.qld.gov.au/>



The next round of the Tarong Community Partnership Fund will **open in February 2024**.

For more information, please contact the Stakeholder Engagement Team on 07 4160 9251 or sponsorship@stanwell.com



We acknowledge the Wakka Wakka People as the Traditional Custodians of the land on which Tarong Power Stations and Meandu Mine are located. We recognise and appreciate their deep and continuing connection to land, water, culture and community.



General Manager Southern Generation, Michael Joy

A MESSAGE FROM GENERAL MANAGER SOUTHERN GENERATION, MICHAEL JOY & GENERAL MANAGER MINING, ANDREW TOMS

Hello everyone

As we look back over the last year there have been many highlights, one that stands out in particular for us has been the exceptional effort and expertise of all our people who ensured we consistently deliver reliable energy to the State. In 2022/23, Stanwell invested over \$100 million dollars in the maintenance and upkeep of our Tarong power stations and Meandu Mine to ensure they remain available for energy production as needed into the future.

Project update

Over and above our busy year of sustained generation levels and coal production, we also completed two extensive overhauls at Tarong Power Stations - Tarong North and Unit Four. At Meandu, the King 2 East (K2E) Project remains a priority to secure long-term fuel supply for the Tarong Power Stations. We are continuing to work with the Commonwealth Government to secure the approvals to progress the extension project (See page 3 for further information). Our teams at Stanwell are also working to create a new portfolio of renewable generation and energy storage projects as a part of our strategy to move towards energy transformation.

Future pathways for our people and our communities

Earlier this year Stanwell launched the Development Pathways Program, which ensures our existing workers are equipped with the skills they need to transition to the energy jobs of tomorrow. Over the past ten months, five mechanical fitters and two electricians have already gained experience working on several wind and solar projects nationwide through the program. There continues to be many development opportunities and pathways within Stanwell's current assets and business, as well as in the transformation of the energy network.

40 year Anniversary

This year, Tarong Power Station is celebrating 40 years of generating electricity. The South Burnett community should be very proud of this region's secure energy contribution to Queensland and our neighbouring states. Here at Tarong we are very proud of this achievement. It reflects the contribution of all current and former employees, contractors and service providers and highlights this region's contribution to keeping the lights on for all Queenslanders.

Summer readiness

Summer is again likely to present some challenging weather conditions. Even with recent rainfall, onsite we are vigilant to the threat of bushfires, and we encourage everyone to be bushfire aware at home. There are many useful online resources available to assist you to prepare for the bushfire season - you can find more information on the back page.

Moving into 2024 our focus remains on ensuring a safe and respectful environment for our people to ensure all who work across Tarong Power Station sites go home safely each day and that we continue to deliver reliable energy and keep the lights on for all Queenslanders.

We wish everyone a safe and happy new year.

Regards
Mick and Andrew



General Manager Mining, Andrew Toms

Highlight reel... check out some of our favourite snaps in 2023!



FEBRUARY: The 2023 Apprentice and Trainee intake at Tarong power stations.



MAY: Stakeholder Engagement Advisor, Karen Wall, visited Kingaroy Kitchen, run by the Endeavour Foundation. The kitchen provides employment opportunities for people with a disability.



JULY: Staff from Stanwell and BUMA Australia (operator of Meandu Mine) were honoured to attend NAIDOC Week "For the Elders" celebrations in Cherbourg.



AUGUST: The South Burnett Regional Council hosted a visit with Stanwell employees to discuss the future of Stanwell operations in the region.



SEPTEMBER: Official opening for the Kingaroy Hospital's Indigenous Midwifery Health building and Yarning Circle.



SEPTEMBER: Stanwell employees were proud to judge entries at the Small Schools Technology Challenge at Tanduringie State School.

Stanwell's renewable energy assets will power up to 40% of Queensland's current energy demand with clean energy by 2035

Building Queensland's clean energy future

As one of Queensland's largest energy suppliers, we are delivering reliable energy today and investing in renewable energy solutions for tomorrow - creating opportunities for our communities and supporting the security, affordability and public ownership of Queensland's energy supply.

Our renewable pipeline

In line with the Queensland Energy and Jobs plan, our renewable energy pipeline will enable Stanwell to:

- Connect up to 9-10 gigawatts towards Queensland's 22-gigawatt renewable energy target
- Invest in more batteries and storage
- Lead the development of Queensland's hydrogen industry via CQH2, the largest proposed hydrogen production project in Australia (based in Gladstone)
- Provide career pathways for our own people and generate new jobs and training for Queenslanders
- Partner with industries, suppliers, communities to drive investment and economic benefit from the energy transformation

Tarong Battery Energy Storage System Update

We have some very exciting news...work on the Tarong Battery Energy Storage System is well underway!

The 300MW battery is being built at Tarong power stations, and here's the latest :

- bulk earthworks completed
- civil works are ramping up (our principal contractor is Yurika)
- delivery of two 275/33 kV transformers

The battery will connect directly into the transmission network and will charge and discharge from and into the electricity grid.

The battery will not be electrically connected to the existing power station, but will make use of the land, grid connection and workforce skills at our site. The project will create around 80 full time jobs during construction, and six (6) full time jobs over the 20-year operation.

Meandu Mine Progressive Rehabilitation Update

The Progressive Rehabilitation and Closure Plan (PRCP) and associated rehabilitation activities at our Meandu Mine are a critical part of managing our environmental obligations and leaving a positive legacy for future generations. An additional 28 hectares of native ecosystem rehabilitation was completed in 2022.

Approximately 39 hectares is expected to be completed by November 2023, taking the total land rehabilitated at Meandu Mine to 704 hectares.

FUN FACT: The total land rehabilitated is equivalent to approximately 1035 football fields.



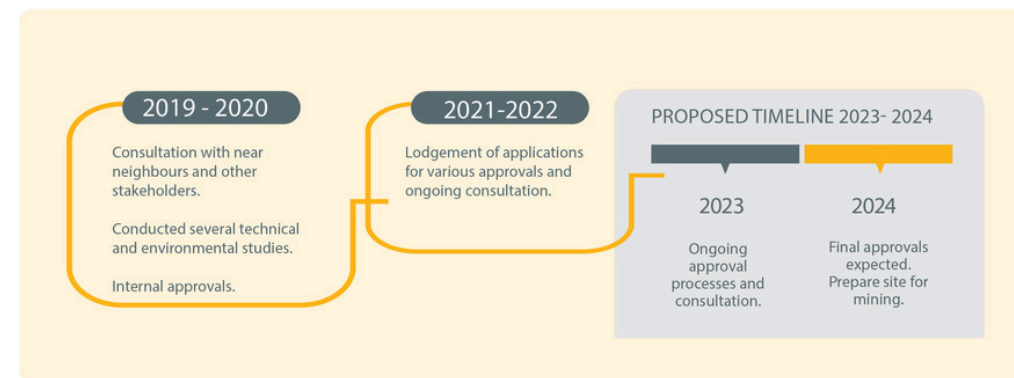
Pictured in the foreground is young rehabilitation and in the background is the mature rehabilitation

King 2 East (K2E) Project Update

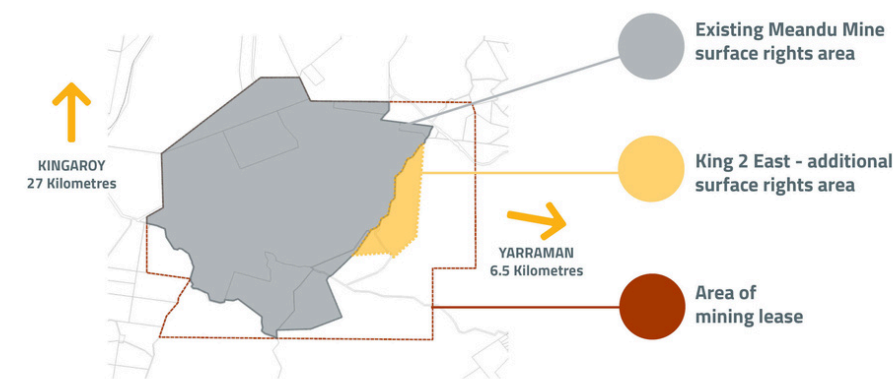
Meandu Mine's King 2 East (K2E) Project will provide a secure, economic supply of coal for the life of Tarong power stations, ensuring Stanwell is able to continue producing reliable energy for Queenslanders.

The K2E Project will increase the current Meandu Mine surface rights area by approximately 187 hectares, which is a seven percent increase in the total operational land area of Meandu Mine. The project area is within the current operational mining lease. Stanwell is progressing the relevant regulatory approvals with final approvals expected in early-mid 2024 when the site will be prepared for mining.

PROJECT MILESTONES



MAP OF MEANDU MINE



How to contact us: If you have any questions about anything you have read today, on our operations or have a general enquiry please contact our **Stakeholder Engagement team** (picture below) on 07 4160 9251, 0456 611 933 or at communityrelations@stanwell.com. The Tarong Power Stations and Meandu Mine security offices, operate 24 hours 7 days a week. The contact number for Tarong Power Stations Security is 07 4160 9260 and Meandu Mine Gatehouse is 07 4160 7211.



John Carey
Stakeholder Engagement Manager SQ



Jan Anfruns
Senior Stakeholder Engagement Advisor



Paul Veivers
Senior Stakeholder Engagement Advisor



Karen Wall
Stakeholder Engagement Advisor



Ashleigh Van Der Linde
Stakeholder Engagement Coordinator