

STANWELL COMMUNITY NEWS

TARONG POWER STATIONS AND MEANDU MINE



WELCOME TO THE DECEMBER 2024 EDITION!

Read about:

- Another successful overhaul at Unit 2
- Securing our long-term fuel supply through the King 2 East expansion
- Our leading rehabilitation at Meandu Mine
- How we're supporting local projects through the Tarong Community Partnership Fund



FROM OUR GENERAL MANAGERS

Mick Joy and Andrew Toms

General Manager, Tarong Power Stations and General Manager, Meandu Mine



Welcome to the December 2024 edition of our community newsletter. As we reflect on the past year and look ahead to 2025, we are reminded of the value of relationships we share with our local community. Whether you are a longtime resident or a new neighbour, we are grateful for your ongoing support and involvement. This newsletter highlights the positive impact we can all make together – sharing updates, celebrating achievements, and looking forward to the future. Thank you for being a part of this journey.

In May this year, Tarong Power Stations and Meandu Mine celebrated a significant milestone – 40 years of continuous operations in the South Burnett. We would like to take this opportunity to thank everyone who has been a part of this journey. It is milestones like these that ensure we continue to play a vital role in keeping the lights on for our customers and Queensland.

In addition to our busy year of reliable generation levels and coal production, we successfully and safely completed a major overhaul of Unit 2. This overhaul is a part of our planned maintenance program, ensuring we continue to meet the energy demands of our customers and the National Electricity Market.

A few key highlights for us include the exceptional efforts and expertise of our teams, whose commitment ensures we consistently deliver reliable energy and maintain Tarong power stations' position among the most reliable power stations in Australia.

This year we were pleased to welcome four new apprentices, two new trainees, and two new graduates to our sites, further strengthening our workforce for the future and increasing our skills and capabilities to set us up for success as we transition to different energy sources.

Meandu Mine King 2 East (K2E) Extension Project remains a priority to secure a long-term fuel supply for the Tarong Power Stations. We are continuing to work with the Federal Government to secure the approvals to progress the King 2 East extension project.

In 2025, we will undertake major overhauls for Tarong North from April to June 2025 and Unit 1 from September to November 2025. We will also continue to progress the

diversification of our portfolio with renewable generation and battery energy storage projects, including the Tarong Battery Energy Storage System, which is on track to commence operations in 2025.

As a business, we are in a unique and valuable position of having one of the most efficient coal-fired plant portfolios in the National Electricity Market. Our existing portfolio will play a key role in maintaining the security and stability of the electricity market, while creating long-term, sustainable opportunities for our business, our people, and our communities.

It is an exciting time for our industry, our people and our community and we look forward to seeing what we can achieve in 2025!

On behalf of the teams at Tarong Power Stations and Meandu Mine, we wish everyone a happy, safe and restful Christmas!

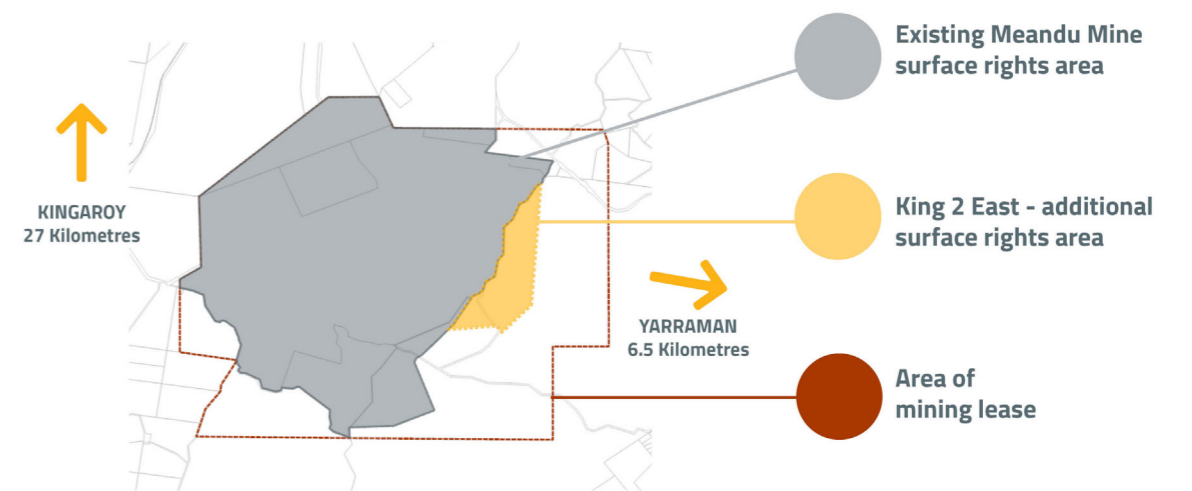
Mick Joy and Andrew Toms

We successfully completed our planned \$53 million overhaul of Unit 2 at Tarong Power Station!



ENERGY DELIVERED: SECURING FUTURE FUEL SUPPLY

MAP OF MEANDU MINE



Meandu Mine's K2E Project will provide a secure, economic supply of coal for the life of Tarong power stations, ensuring Stanwell is able to continue producing reliable energy for our customers and Queensland.

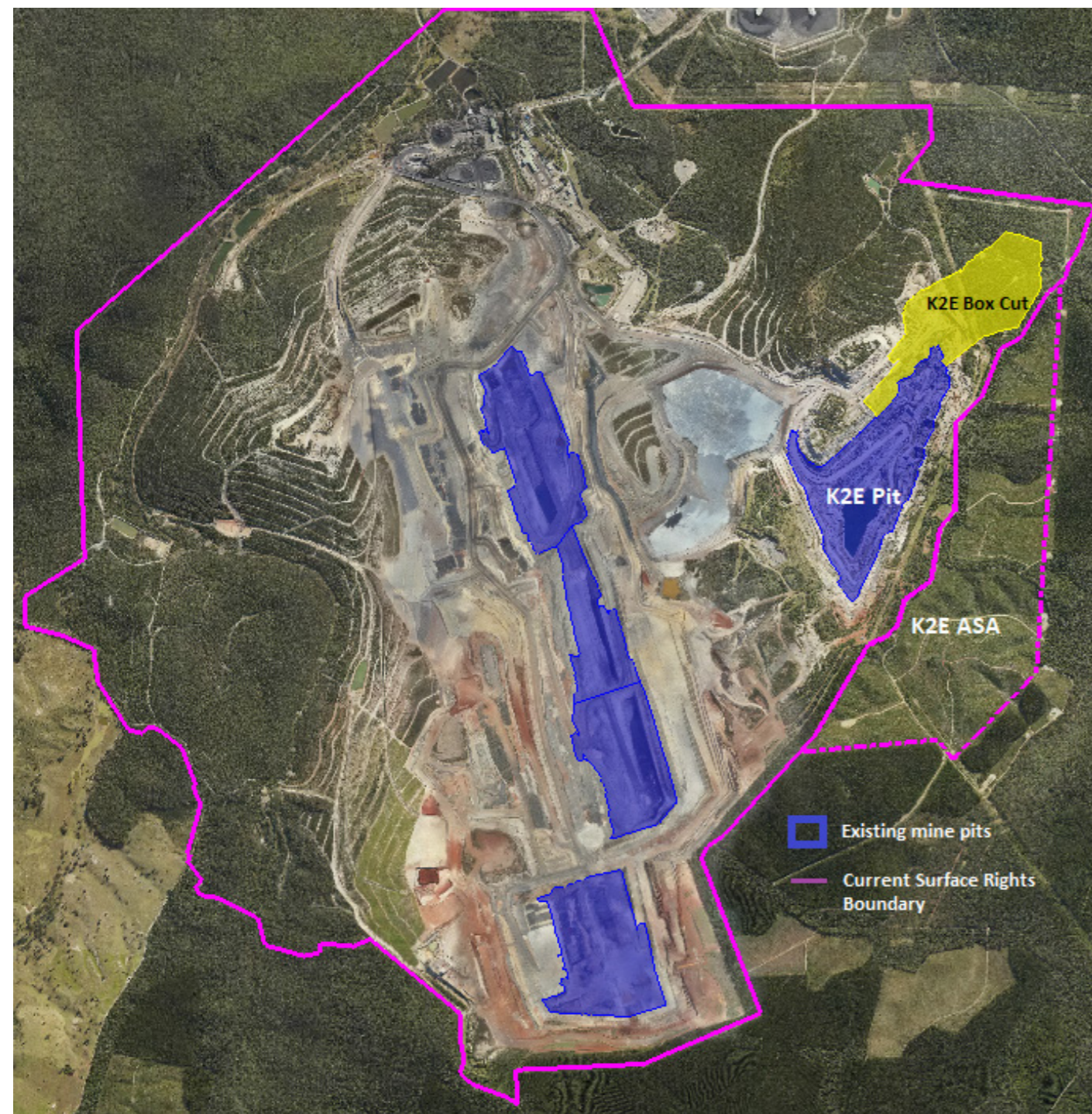
The K2E Project will increase the current Meandu Mine surface rights area by approximately 187 hectares, which is a seven percent increase in the total operational land area of Meandu Mine. The project area is within the current operational mining lease.

There will be upcoming public notifications for the Federal approval and for the road closure application (for closing the portion of Ridge Road within the K2E Project area).

Mining in the Existing Surface Rights Area (ESRA) in the King 2 East Box Cut (an extension of the King 2 East Pit in the north-east corner of the mine) is currently planned to commence with topsoil removal in March 2025, and first waste stripping commencing in May 2025. The first

blast in the area is scheduled for July 2025. Work to prepare for mining, including the installation of infrastructure and upgrading of haul roads, has commenced. We'll keep you posted as these activities progress.

Over the Christmas and New Year period of 2024/2025, regrowth vegetation will be cleared and fauna spotting and Cultural Heritage assessments will take place.



REHABILITATING MINING LAND TO PAVE THE WAY FOR A SUSTAINABLE FUTURE

Stanwell received approval for the Meandu Mine Progressive Rehabilitation and Closure Plan from the Queensland Government in February 2024. The Plan outlines how the mine will be rehabilitated to achieve Post Mining Land Uses (PMLU's) that are safe, stable, non-polluting and sustainable following cessation of mining operations. Meandu Mine has seven approved PMLU's, including:

- Native ecosystem
- Creek diversion
- Beef cattle grazing
- Plantation forestry
- Water storage
- Landholder retained infrastructure
- Steep rocky ecosystem

Meandu Mine has a long history of successful rehabilitation and in 2022

achieved certification of approximately 153 hectares of native ecosystem rehabilitation from the Queensland Government. This was the largest area of native vegetation rehabilitation approved in a single application for a mine in Queensland at that time.

We've rehabilitated 734 hectares of land at Meandu Mine since 1983.

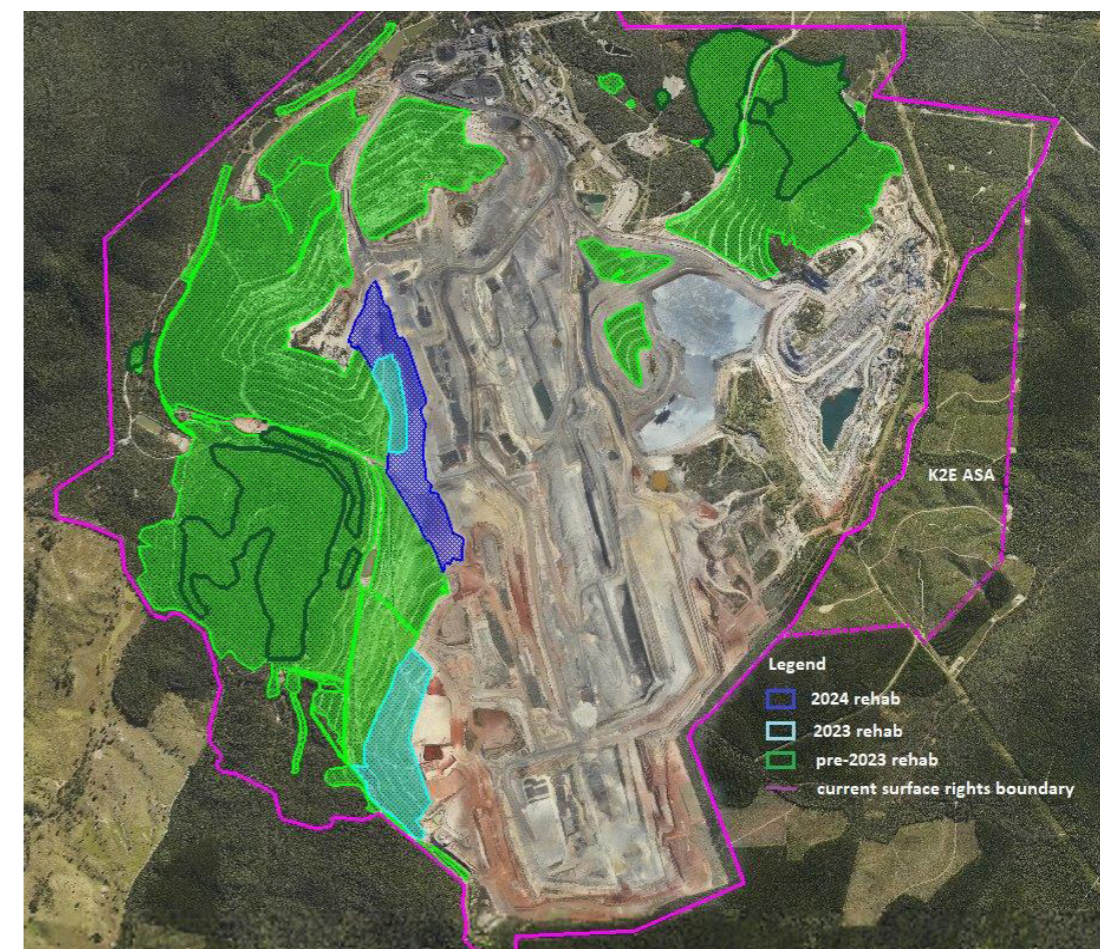
Key rehabilitation facts:

- Over the past 2 years, 69 hectares of mined land has been rehabilitated to native Eucalypt - Acacia woodland (similar to adjacent State Forests).

- A total of 734 hectares of land has been rehabilitated to Native Ecosystem at Meandu Mine since operations commenced in 1983. This represents 33% (or one-third) of the total area of land disturbance.

In 2025, cattle grazing trials will commence on a rehabilitated area in accordance with the PRCP, to confirm soil types and best land management practises to optimise grazing capacity of the post-mining landform for this Post Mining Land Use.

Stanwell recognises the importance of Indigenous perspectives in mining operations and rehabilitation stages of Meandu Mine. Stanwell will continue to work with all stakeholders with interests in the rehabilitation of Meandu Mine to understand their aspirations and priorities and take this into consideration when making decisions about the progressive rehabilitation of Meandu Mine.



NEXT GEN BATTERY ENERGY STORAGE SYSTEM PROJECT TAKES OFF

The Tarong Battery Energy Storage System is a 300 MW lithium-ion battery under construction within the Tarong Power Station precinct. It is being built in two stages.

Stage one is nearing the finish line and Tesla technicians are now completing the commissioning of the first 82 lithium-ion 2XL Megapack units.

Meanwhile, construction on stage 2 is progressing smoothly, with all high-voltage cabling now installed.

Together, Stage 1 and 2 comprise 164 Megapack units.

Tarong BESS Project Manager Anthony Goodger said Principal Contractor, Yurika commenced construction of the BESS in August 2023.

“Over the past 16 months, up to 80 employees have been

engaged on the project, including local contractors supplying a variety of services including civil works, cranning, plumbing, concrete services, and quarry materials,” Mr Goodger said.

“As a result, the battery is on track to commence operations in mid-2025.”

The 300 MW, two-hour duration Tarong BESS is the first battery energy storage asset in Stanwell’s renewable energy portfolio.

Once operational, the battery will soak up energy during periods of high generation and then discharge electricity into the grid during periods of low energy generation or during periods of peak demand.

Six full-time jobs will be created over the 20-year operation and maintenance phases of the project.



EMPOWERING CONNECTIONS: CELEBRATING INDIGENOUS BUSINESS MONTH

In October we celebrated Indigenous Business Month, which calls upon First Nations business owners and their non-Indigenous allies to celebrate First Nations businesses, their stories, and their ways of doing business.

Our Procurement teams connected with Indigenous business leaders and entrepreneurs at events in Cherbourg and Chinchilla to celebrate the important role that Indigenous

businesses play in helping to improve the quality of life in their communities and explore new opportunities to work together as our project pipeline grows. The event provided a valuable opportunity to explore ways that Stanwell can continue to build relationships and engage with First Nations businesses, and support inclusivity in our procurement processes.



ENERGY SHARED: COMMUNITY PARTNERSHIP FUND FUELLING LOCAL PROJECTS

We're committed to positively impacting the lives of those around us, and our Tarong Community Partnership Fund allows us to achieve that by investing in the people and projects that shape our communities.

Through this fund, we've invested almost \$120,000 into six community projects during the 2024/2025 financial year. Applications are now open for our second round of FY24/25 funding and will close on 28 February 2025.

We encourage applications from local groups with community-led projects that are in the final planning stages and aim to deliver lasting benefits, including improvements in employment, access to essential services, educational opportunities, and social connectedness for communities near Tarong Power Stations and Meandu Mine. If you know of a not-for-profit organisation that may be interested in applying, please contact the Stanwell Stakeholder Engagement Team on (07) 4160 9251 or email sponsorship@stanwell.com.

Take a look at some of the recent projects we've supported!

KUMBIA AND DISTRICT SCHOOL OF ARTS

The Kumbia and District School of Arts has begun essential upgrades to the Kumbia Memorial Hall. These improvements include restumping the structure to stabilise its foundation and ensure the building's long-term stability. The Kumbia and District School of Arts plays an important role in preserving and enhancing the arts, culture and heritage precinct in Kumbia for the benefit of the surrounding community. We are pleased to partner with the community to ensure Kumbia has a vital hub for community and cultural activities.

SOUTH BURNETT SAINTS AUSTRALIAN FOOTBALL CLUB

The South Burnett Saints Australian Football Club are building new change rooms and disability support facilities at their home ground in Kingaroy. The upgraded facilities will enhance the sporting experience and promote inclusivity and accessibility for all genders, ages and abilities within the community. Additionally, it will enhance the functionality of the venue, helping to establish it as a premier sporting venue in the region.

QUEENSLAND COUNTRY WOMEN'S ASSOCIATION – KINGAROY BRANCH

The Queensland Country Women's Association in Kingaroy are in the process of installing a solar energy system at their Kingaroy facilities. This will result in significant long-term savings on electricity costs for the association, which can be reinvested into community projects to enhance the lives of local people.

KINGAROY HOSPITAL AUXILIARY INC.

Kingaroy Hospital will purchase a non-invasive ventilator, a vital piece of equipment that will provide essential support to hospital staff in treating patients with respiratory conditions, offering critical care to those in need right here in the South Burnett. The ventilator will enable more effective and localised treatment within our community, reducing the need for patients to travel long distances for care and ensuring high-quality respiratory support is available close to home.

NANANGO AND DISTRICT CRICKET CLUB

The lighting project at the Nanango Sporting Association Complex will be enhanced by an upgrade to the facilities switchboard. This upgrade will enhance the safety and operational efficiency of the complex, enabling more sport and community activities to be held when the sun goes down.

GUNDOO ABORIGINAL CORPORATION

Gundoo Aboriginal Corporation will replace three shade sails and install two new ones at their early childhood facility in Cherbourg, enabling children to be better protected when playing on their recently completed stage area and bicycle track. Gundoo Aboriginal Corporation is committed to providing safe facilities and play areas for the benefit of the community's children at the Gundoo Centre while also enriching the educational experiences for children as they transition into the school environment.



STAY INFORMED: JOIN OUR NOTIFICATION LIST FOR OPERATIONAL UPDATES

We are committed to keeping our community informed about impacts that may arise from our operations. We understand that the work we do can sometimes affect the surrounding area, and we want to ensure that you are always in the loop.

By joining our notification list, you'll receive timely updates about our planned activities to manage pests, hazard reductions and mine blasts.

Signing up is easy! Simply provide your contact details by email to southernengagements@stanwell.com to join the list. You'll receive notifications by email, text, or phone call—whichever is most convenient for you.

Your awareness and feedback help us ensure that we continue to operate responsibly and with respect for the people and environment around us. Please don't hesitate to let your


neighbours or new residents near our operational sites know how they can be kept in the loop.


If you have any questions or concerns, please feel free to reach out to the Stanwell Stakeholder Engagement Team.

HOW TO CONTACT US

At Stanwell, we value open communication and are always here to assist you. Whether you have a question, concern, or suggestion, we encourage you to reach out to us— we're happy to help!

Here's how you can get in touch with our Stakeholder Engagement Team:

 Call us on 0456 611 933. Our team is available Monday to Friday to answer your questions or address any concerns you may have. For urgent matters outside of business hours, please contact the Tarong Power Station Security Office at 4160 9260, which is staffed 24/7.

 You can email us any time at southernengagements@stanwell.com. Whether it's a quick enquiry or something more detailed, we'll respond as quickly as possible.



END OF YEAR MESSAGE

As we near the end of another successful year, we're wishing you and your families a happy, restful and safe holiday period. We're looking forward to embarking on an exciting 2025 as we continue to deliver reliable and secure energy while playing a key role in Queensland's transition to a renewable energy future.

