

## Atea EMP

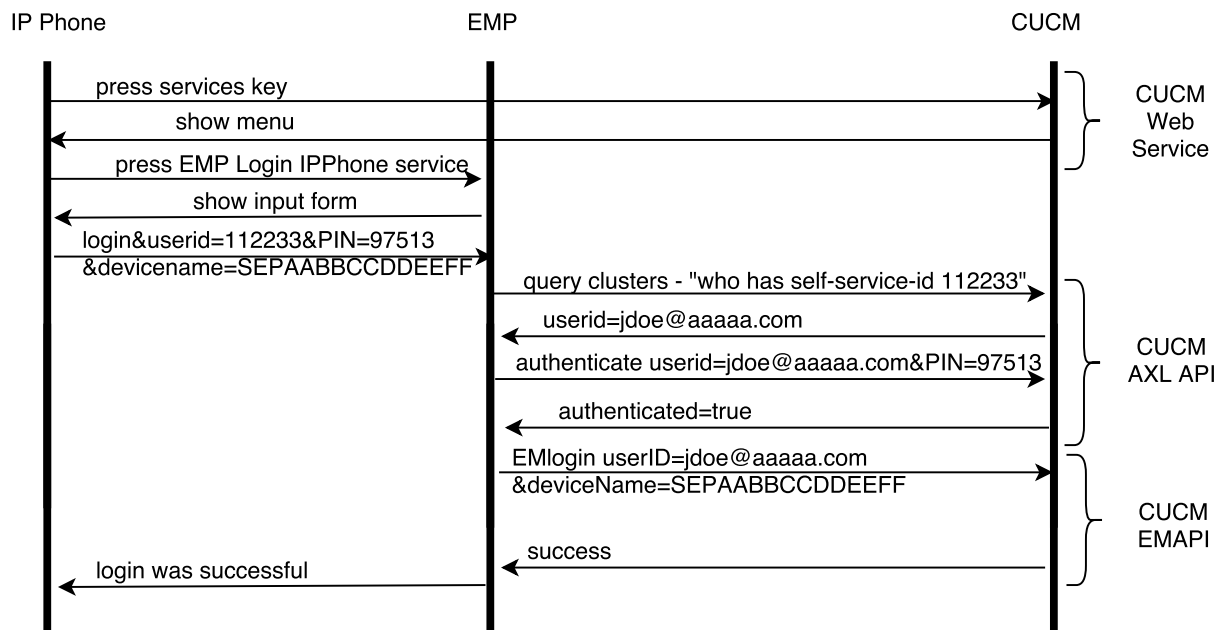
# Extension Mobility Proxy with EMCC



Atea Systems Limited  
PO Box 22 042, Khandallah  
Wellington, 6441, New Zealand  
Phone: +64 4 464 0040  
www.ateasystems.com

## How Cross Cluster users are supported

*The EMAPI Atea use to login users to CUCM does not support EMCC. Therefore another method is required to support these users so they can enjoy the benefits of easy phone login. The technique used by Atea EMP is outlined below.*



- Atea EMP will query each cluster on 1st login to identify the home cluster of a UserID
- The EMP will cache this information for future reference
- When a login attempt is made the EMP will authenticate the user to their home cluster.
- Once authenticated, the user will be logged into the phone on its native cluster.