



Mineral Processing Fixed Plant Catalogue

Our Innovation. Your Advantage.



What We Do

From pit to port, we specialise in wear parts and services for the mineral processing industry that increase asset availability, reduce high risk tasks and maintenance costs. For example; chute and hopper design, rotatable chute refurbishment and remote condition monitoring.



Registered Trademarks.

All company names, logos, product names, and identifying marks used throughout this publication are the property of their respective trademark owners. They are used for descriptive purposes only and are protected by the relevant laws of the countries in which the trademarks are registered.

100 YEARS OF INNOVATION AND GROWTH

We'll work with you to understand your operational challenges and provide the smartest solutions with:



Experience and Expertise

With over 100 years' experience in the foundry business and with world-class manufacturing facilities located globally, Bradken has the knowledge, expertise and capability to produce fully machined cast iron and steel products from a mass of 0.5 kg (1.1lbs) up to and over 25,000kg (65,000 lbs).



Safety

Bradken products provide comprehensive safety features to reduce risk during installation and maintenance.



Reducing Costs and Increasing Productivity

Bradken products have been designed and engineered to optimise operational performance and aim to provide our customers with lowered Total Cost of Ownership (TCO).



Innovation and Design

Leveraging our expertise and experience in wear materials with our innovative technical teams, Bradken can supply unique and tailored packages to deliver high performing solutions.



Support Services

Global mining and resources companies partner with Bradken because they know we will leverage our extensive design, engineering and in-field support services to solve their specific operational challenges.



Local Sales and Support Networks

Bradken's global sales and distribution networks supply the world's major mining and industrial regions.



Sustainability and Environment

Bradken is committed to reducing its impact on the environment through a comprehensive and targeted sustainability plan.



Equal Opportunities

We value diversity and inclusion in the workplace. We seek to recruit, develop and retain the most talented people from diverse cultures, perspectives, skills and experiences within our workforce.

Product Lines

Bradken's broad range of products enables technically advanced wear solutions across all applications.



Vulcabrix® combines hard abrasion resistant ceramic tiles with an impact resistant and abrasion resistant rubber. Vulcabrix ceramic liners are designed for use in moderate impact applications and severely abrasive environments found in the mining and mineral processing industries.



Revolver® system allows all skirt liner maintenance to be performed outside the equipment. Liner maintenance no longer needs to be conducted in potentially unsafe environments like confined spaces inside chutes and hoppers. The liner can now be changed or adjusted from outside the equipment.



Duaplate® with over 50 years' experience in the manufacture of chromium carbide clad wear plate, Bradken is a global market leader in this field. With a selection of different grades, thicknesses and sheet sizes to best fit a solution for high impact or sliding abrasion in fixed or mobile equipment applications found in the mining and resource industry.



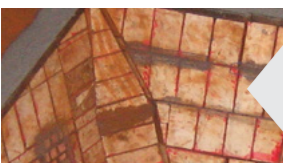
Duracast® is an abrasion and high impact resistant product. Duracast is a white iron, alloyed with chromium and other alloy elements, to provide a tough wear resistant material. Duracast is often cast into billets and liners and used extensively in the mining, and mineral processing industries, particularly in bulk handling situations.



AR Steel (Q&T) plate provides an economical solution to an abrasive and impact prone environment. Bradken's Abrasion Resistant Steel is easily fabricated and has many applications in the construction, mining and mineral processing industries.



Duablock® products utilise abrasion and impact resistant chrome white iron castings metallurgically bonded to a weldable mild steel backing plate. This union of materials allows improved mechanical properties and allows welding, studding or bolting.



Epoxies a complementary product which can be used for emergency repairs, gap filling or transition blending.

Bradken is a leading manufacturer of wear resistant products for the mining, construction and mineral processing industries.

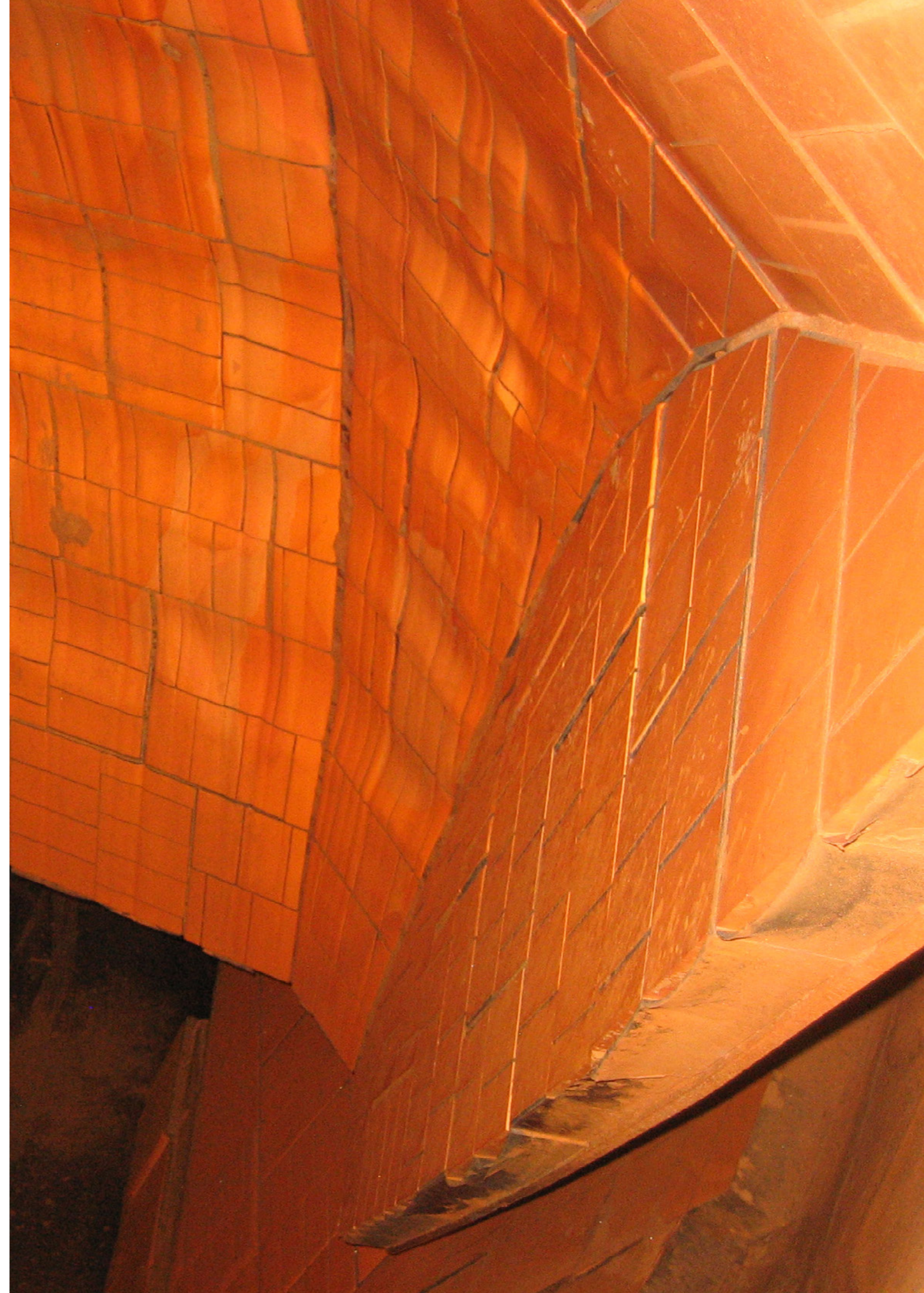
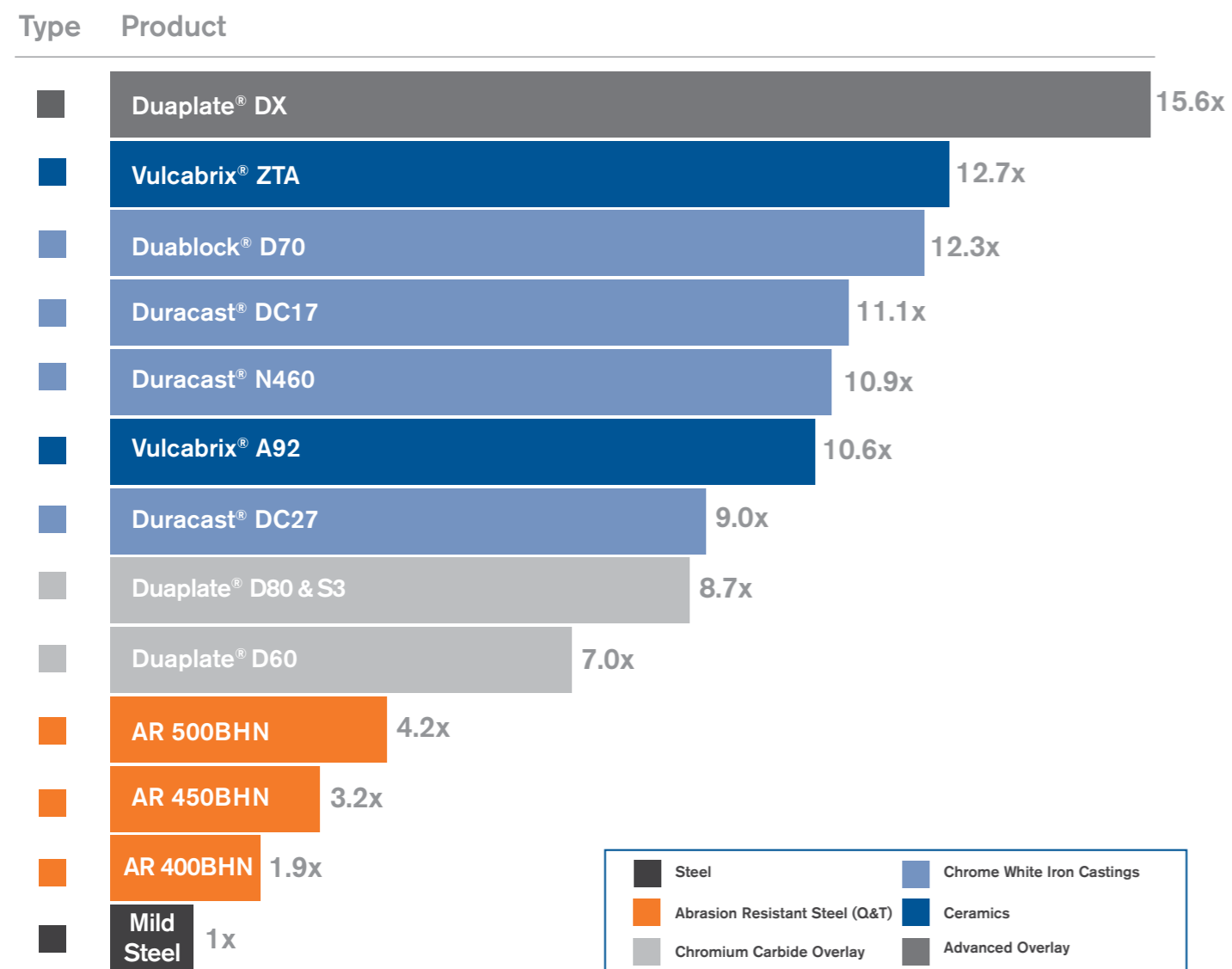
Laboratory Wear Comparison

Bradken has always been considered at the forefront of supplying quality, abrasion resistant products to the market place.

Bradken strives to improve existing technologies and develop new products to provide maximum protection for fixed plant and mobile equipment against the effects of wear.

Our research and development has led to Bradken providing a range of products in Abrasion Resistant (Q&T) steel, chromium carbide overlay or cast white iron and ceramic based products. This versatile range allows Bradken to recommend the best material for any application.

ASTM G65 Comparison of wear resistant materials to mild steel.



Vulcabrix® Range

Rubber Bonded Ceramic Range

The Vulcabrix range of liners combines very hard abrasion resistant ceramic tiles, with impact absorbing rubber, on to a steel backing plate.

Bradken offers a full range of products to suit all applications and budgets. custom sizes, shapes, optional edge protection and bevelling.

Product Features:

- Modular Liner
- Customised Liners System
- Maximum Resistance to Abrasion
- Reliable Adhesion Strength
- Impact Protection
- Edge Protection
- Noise Reduction

Supply Benefits:

- State of the Art Manufacture
- Traceability
- 100% Control of Manufacture
- Reactive and Responsive
- Cost Effective
- Superior Quality

Vulcabrix® Range

Vulcabrix® A92

Suitable for high wear areas.

Vulcabrix® ZTA

Suitable for extreme wear and greatly enhanced impact resistance.

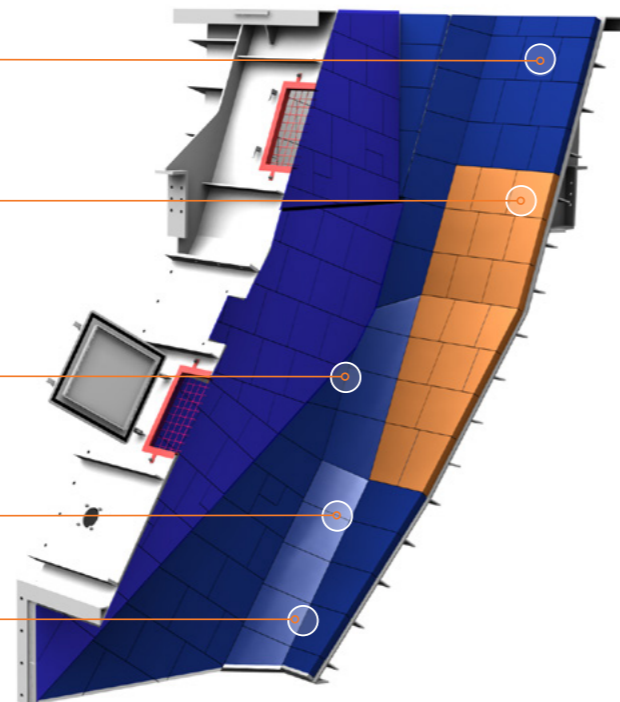
Custom Shapes



Bevelling



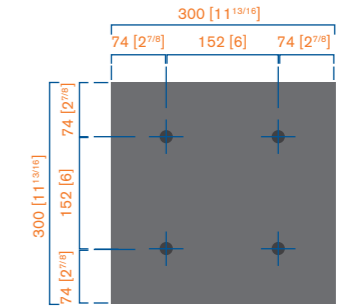
Edge Protection



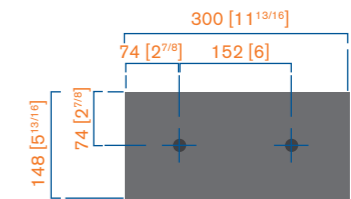
Vulcabrix® 300 Series

Product with a mass over 25kg we recommend two people or mechanical lifting. M16x50lg studded liners to suit 152 hole centres, 300x300 liners.

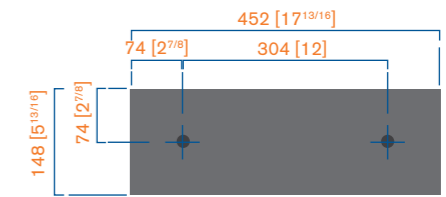
SIA Part No.	Total Thickness (mm)	Useable Thickness (mm)	Grade	Mass (kg)
S1A-M16S-VA37-25	37	25	A92	12.9
S1A-M16S-VZ37-25			ZTA	14.3
S1A-M16S-VA63-50	63	50	A92	21.8
S1A-M16S-VZ63-50			ZTA	24.1



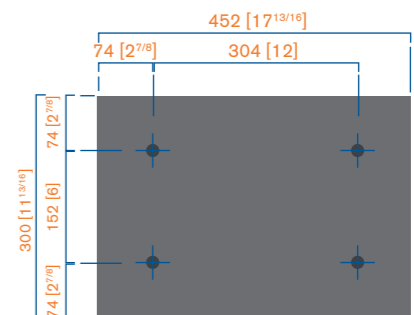
R1A Part No.	Total Thickness (mm)	Useable Thickness (mm)	Grade	Mass (kg)
R1A-M16S-VA37-25	37	25	A92	6.5
R1A-M16S-VZ37-25			ZTA	7.2
R1A-M16S-VA63-50	63	50	A92	10.9
R1A-M16S-VZ63-50			ZTA	12.1
R1A-M16S-VA112-100	112	100	A92	19.3
R1A-M16S-VZ112-100			ZTA	21.3



R2B Part No.	Total Thickness (mm)	Useable Thickness (mm)	Grade	Mass (kg)
R2B-M16S-VA37-25	37	25	A92	9.8
R2B-M16S-VZ37-25			ZTA	10.9
R2B-M16S-VA63-50	63	50	A92	16.5
R2B-M16S-VZ63-50			ZTA	18.3



R3B Part No.	Total Thickness (mm)	Useable Thickness (mm)	Grade	Mass (kg)
R3B-M16S-VA37-25	37	25	A92	19.3
R3B-M16S-VZ37-25			ZTA	21.4
R3B-M16S-VA63-50	63	50	A92	32.7
R3B-M16S-VZ63-50			ZTA	36.2





Global mining and resources companies partner with Bradken because they know we will leverage our extensive design, engineering and in field support services to solve their specific operational challenges.

Duaplate® Range

Chromium Carbide Overlay Solution

Duaplate is a well established chromium carbide overlay plate, well known for its high abrasion and impact resistance. Duaplate is chromium carbide composite cladding that is fusion bonded to a backing material. The standard backing material for Duaplate is mild steel. The backing plate acts as a ductile base, which allows Duaplate to be formed and shaped without damage to the overlay material. The backing plate can also be used for structural support, allowing entire hoppers and chutes to be created using only Duaplate.

Duaplate® is available in four different grades to suit a range of operating conditions:

Duaplate®	D60
Duaplate®	D80
Duaplate®	S3
Duaplate®	DX

Duaplate® Finishes

Duaplate comes in three different finishes to meet any condition.



Duaplate® Standard

Bradken's default premium quality finish.

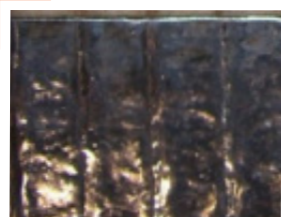
Available in: Duaplate D60, Duaplate D80 and Duaplate S3



Duaplate® Smooth

The smooth finish reduces surface variation and improves flow characteristics.

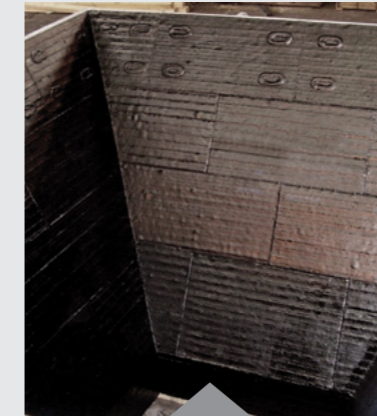
Available in: Duaplate D60, Duaplate D80 and Duaplate DX



Duaplate® Polished

The "polished" surface finish will enhance flow characteristics of sticky ore. Polished further improves flow over Smooth.

Available in: All Grades



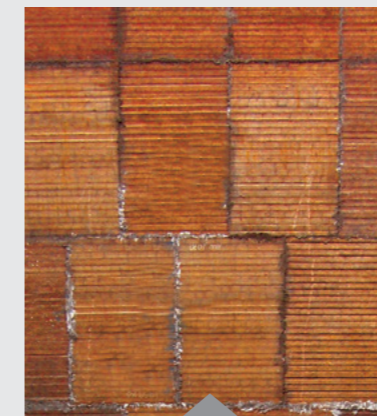
Suited for applications involving high abrasion and medium impact

Duaplate® D60

The D60 overlay material is an austenitic chromium carbide weld overlay that is based on AS2576-2355. The microstructure consists of primary M_7C_3 carbides in a carbide-austenite eutectic matrix. The high abrasion resistance is provided by the hard chromium carbides that protect the matrix from abrasive wear.

Used on:

- Bin and hopper liners
- Chute liners
- Main frame liners
- Slurry pipes and bends
- Sugar harvesting equipment



Suited for applications involving high abrasion and high impact.

Duaplate® D80

The D80 overlay material is a complex chromium carbide weld overlay that is based on AS2576-2455. The microstructure of this material consists of primary M_7C_3 carbides in a complex carbide austenite matrix. The toughness of the material is improved by the formation of nodular complex carbides leading to a reduction in the size of acicular M_7C_3 type carbides and inter-carbide spacing.

Used on :

- Bin & hopper liners
- Chute liners
- Deflector plates
- Vibrating feeders
- Mobile equipment
- Grizzly bars



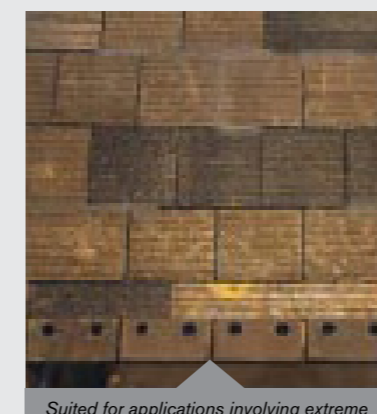
Suited for applications involving high abrasion and high impact

Duaplate® S3

Duaplate S3 is a chromium-tungsten carbide weld overlay, the manufacturing process of Duaplate, along with the microstructure and chemical composition, gives Duaplate S3 its superior properties. Duaplate S3 performs well in high abrasion and high impact wear applications. Large sheets or custom shapes of Duaplate S3 are available and can be formed into complex shapes.

Used on :

- Bin and hopper liners
- Chute liners
- Deflector plates



Suited for applications involving extreme abrasion and impact

Duaplate® DX

Duaplate DX is a special blend of carbides and borides in a highly refined overlay product. It's engineered micro structure increases hardness, toughness and abrasion resistance over conventional chromium carbide overlays

Used on :

- Vibrating feeders
- Mobile equipment
- Bin and hopper liners
- Chutes liners

Duaplate® Adaptability

Duaplate is a premium quality product. It is manufactured under tightly controlled parameters within a quality management system.

Forming and Fabrication

The standard backing material for Duaplate is mild steel. The backing plate acts as a ductile base, which allows Duaplate to be formed and shaped without damage to the overlay material. The backing plate can also be used for structural support, allowing entire hoppers and chutes to be created using only Duaplate. This enables a continuous wear-resistant surface to be produced regardless of the shape and complexity of the fabrication.

Welding

The base material can be welded with standard mild steel or low hydrogen welding consumables with no pre-heating required. However, care should be taken to avoid contacting the overlay material.

Cutting

Plasma cutting is the recommended method for cutting Duaplate. It is preferable to cut Duaplate from the backing plate side to ensure a clean edge and to prevent carbide contamination.

Duaplate Polished

Available in all grades and thicknesses, the "Polished" surface finish will enhance flow characteristics of sticky ore.

Attachment Methods

- Duaplate can be fabricated with studs welded to mild steel side of wear plate (M12, M16, M20 and M24)
- Duaplate can be fabricated with counter-sunk holes to suit bolts (M12, M16, M20 and M24)
- Duaplate can be supplied with holes ready cut for plug welding

Duaplate® Sheet Sizing

Plate Type	Nominal Wear Thickness (mm)	Nominal Backing Thickness (mm)	Estimate Mass (kg/m ²)	Sheet Sizes		
				1650 X 3030	3100 x 2100	1940 x 2870** 2360 x 2870**
5 on 8	5	8	102			DX
7 on 8	7	8	114			D60, D80
8 on 8	8	8	126			DX
9 on 10	9	10	149			D60, D80
12 on 10	12	10	173	D60, D80, S3	D60, D80	
16 on 8	16	8	189			DX
20 on 10	20	10	236	D60, D80, S3	D60, D80	
25 on 10	25	10	275	D60, D80, S3	D60, D80	
36 on 10*	36	10	361	D80, S3		

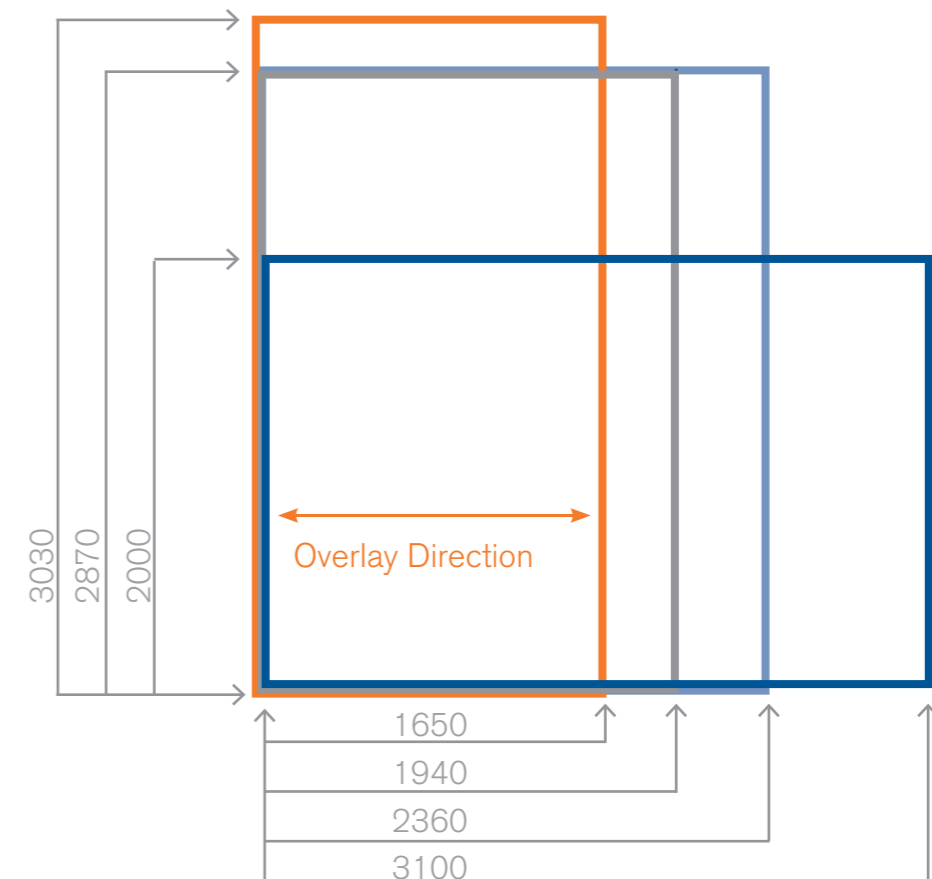
*36 on 10 (D80 and S3) sheet size is 1600x3000

**Available in smooth surface finish and Duaplate DX sizes

Notes:

Please discuss any variation from standard with your local sales representative.

Non-standard sheets and plate types are made to order with a minimum quantity.





Duaplate® 300 Series Liners

Products with a mass over 25kg we recommend two persons or mechanical lifting. M16x50lg studded liners to suit 152 hole centres, 300x300 liners

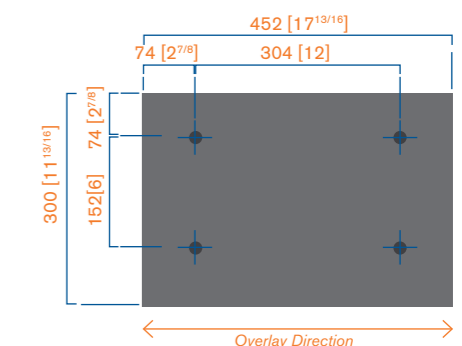
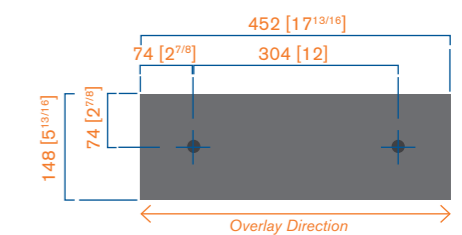
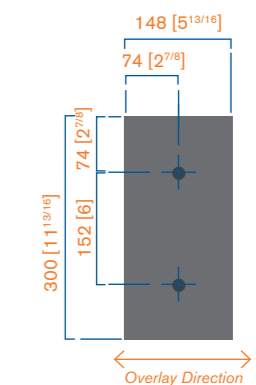
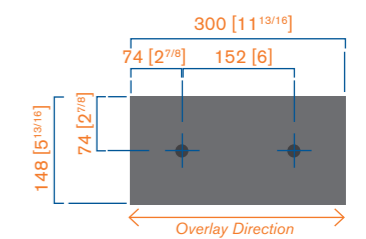
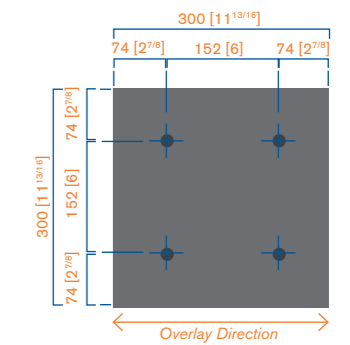
SIA Part No.	Total Thickness (mm)	Useable Thickness (mm)	Grade	Mass (kg)
S1A-M16S-DP07-06D60	13	7	D60	9.5
S1A-M16S-DP09-10D60	19	9	D60	13.7
S1A-M16S-DP09-10D80			D80	
S1A-M16S-DP12-10D60	22	12	D60	15.9
S1A-M16S-DP12-10D80			D80	
S1A-M16S-DP20-10D60	30	20	D60	21.5
S1A-M16S-DP20-10D80			D80	
S1A-M16S-DP25-10D80	35	25	D80	25.0
S1A-M16S-DP36-10D80	46	36	D80	32.8

R1AH Part No.	Total Thickness (mm)	Useable Thickness (mm)	Grade	Mass (kg)
R1AH-M16S-DP07-06D60	13	7	D60	4.7
R1AH-M16S-DP09-10D60	19	9	D60	6.8
R1AH-M16S-DP09-10D80			D80	
R1AH-M16S-DP12-10D60	22	12	D60	7.8
R1AH-M16S-DP12-10D80			D80	
R1AH-M16S-DP20-10D60	30	20	D60	10.6
R1AH-M16S-DP20-10D80			D80	
R1AH-M16S-DP25-10D80	35	25	D80	12.4
R1AH-M16S-DP36-10D80	46	36	D80	16.2

R1AV Part No.	Total Thickness (mm)	Useable Thickness (mm)	Grade	Mass (kg)
R1AV-M16S-DP07-06D60	13	7	D60	4.7
R1AV-M16S-DP09-10D60	19	9	D60	6.8
R1AV-M16S-DP09-10D80			D80	
R1AV-M16S-DP12-10D60	22	12	D60	7.8
R1AV-M16S-DP12-10D80			D80	
R1AV-M16S-DP20-10D60	30	20	D60	10.6
R1AV-M16S-DP20-10D80			D80	
R1AV-M16S-DP25-10D80	35	25	D80	12.4
R1AV-M16S-DP36-10D80	46	36	D80	16.2

R2BH Part No.	Total Thickness (mm)	Useable Thickness (mm)	Grade	Mass (kg)
R2BH-M16S-DP07-06D60	13	7	D60	7.0
R2BH-M16S-DP09-10D60	19	9	D60	10.1
R2BH-M16S-DP09-10D80			D80	
R2BH-M16S-DP12-10D60	22	12	D60	11.7
R2BH-M16S-DP12-10D80			D80	
R2BH-M16S-DP20-10D60	30	20	D60	15.9
R2BH-M16S-DP20-10D80			D80	
R2BH-M16S-DP25-10D80	35	25	D80	18.5
R2BH-M16S-DP36-10D80	46	36	D80	24.3

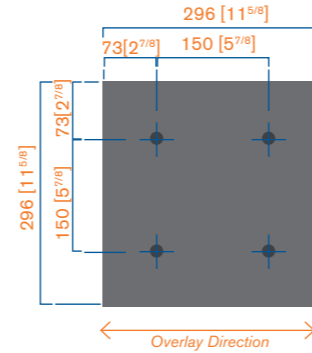
R3BH Part No.	Total Thickness (mm)	Useable Thickness (mm)	Grade	Mass (kg)
R3BH-M16S-DP07-06D60	13	7	D60	14.2
R3BH-M16S-DP09-10D60	19	9	D60	20.5
R3BH-M16S-DP09-10D80			D80	
R3BH-M16S-DP12-10D60	22	12	D60	23.7
R3BH-M16S-DP12-10D80			D80	
R3BH-M16S-DP20-10D60	30	20	D60	32.3
R3BH-M16S-DP20-10D80			D80	



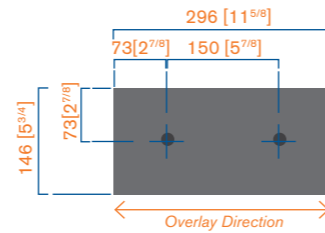
Duaplate® 296 Series Liners

Products with a mass over 25kg we recommend two persons or mechanical lifting.
M16x50lg studded liners to suit 150 hole centres, 296x296 liners

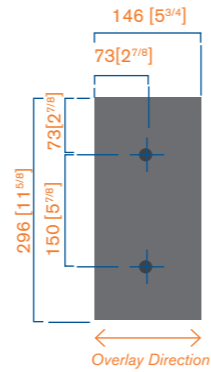
S2A Part No.	Total Thickness (mm)	Useable Thickness (mm)	Grade	Mass (kg)
S2A-M16S-DP07-06D60	13	7	D60	9.5
S2A-M16S-DP09-10D60	19	9	D60	13.7
S2A-M16S-DP09-10D80			D80	
S2A-M16S-DP12-10D60	22	12	D60	15.9
S2A-M16S-DP12-10D80			D80	
S2A-M16S-DP20-10D60	30	20	D60	21.5
S2A-M16S-DP20-10D80			D80	
S2A-M16S-DP25-10D80	35	25	D80	25.0
S2A-M16S-DP36-10D80	46	36	D80	32.8



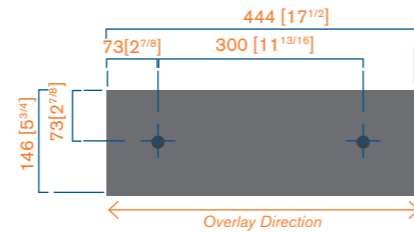
R4AH Part No.	Total Thickness (mm)	Useable Thickness (mm)	Grade	Mass (kg)
R4AH-M16S-DP07-06D60	13	7	D60	4.7
R4AH-M16S-DP09-10D60	19	9	D60	6.8
R4AH-M16S-DP09-10D80			D80	
R4AH-M16S-DP12-10D60	22	12	D60	7.8
R4AH-M16S-DP12-10D80			D80	
R4AH-M16S-DP20-10D60	30	20	D60	10.6
R4AH-M16S-DP20-10D80			D80	
R4AH-M16S-DP25-10D80	35	25	D80	12.4
R4AH-M16S-DP36-10D80	46	36	D80	16.2



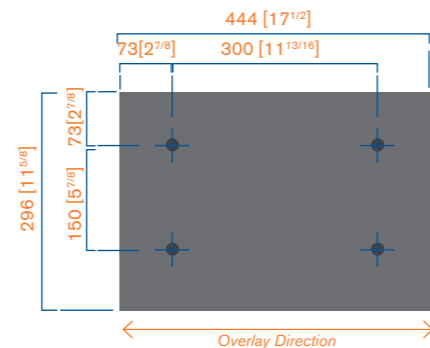
R4AV Part No.	Total Thickness (mm)	Useable Thickness (mm)	Grade	Mass (kg)
R4AV-M16S-DP07-06D60	13	7	D60	4.7
R4AV-M16S-DP09-10D60	19	9	D60	6.8
R4AV-M16S-DP09-10D80			D80	
R4AV-M16S-DP12-10D60	22	12	D60	7.8
R4AV-M16S-DP12-10D80			D80	
R4AV-M16S-DP20-10D60	30	20	D60	10.6
R4AV-M16S-DP20-10D80			D80	
R4AV-M16S-DP25-10D80	35	25	D80	12.4
R4AV-M16S-DP36-10D80	46	36	D80	16.2



R5BH Part No.	Total Thickness (mm)	Useable Thickness (mm)	Grade	Mass (kg)
R5BH-M16S-DP07-06D60	13	7	D60	7.0
R5BH-M16S-DP09-10D60	19	9	D60	10.1
R5BH-M16S-DP09-10D80			D80	
R5BH-M16S-DP12-10D60	22	12	D60	11.7
R5BH-M16S-DP12-10D80			D80	
R5BH-M16S-DP20-10D60	30	20	D60	15.9
R5BH-M16S-DP20-10D80			D80	
R5BH-M16S-DP25-10D80	35	25	D80	18.5
R5BH-M16S-DP36-10D80	46	36	D80	24.3



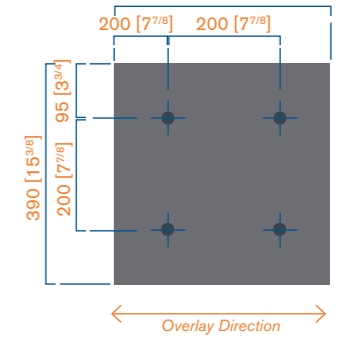
R6BH Part No.	Total Thickness (mm)	Useable Thickness (mm)	Grade	Mass (kg)
R6BH-M16S-DP07-06D60	13	7	D60	14.2
R6BH-M16S-DP09-10D60	19	9	D60	20.5
R6BH-M16S-DP09-10D80			D80	
R6BH-M16S-DP12-10D60	22	12	D60	23.7
R6BH-M16S-DP12-10D80			D80	
R6BH-M16S-DP20-10D60	30	20	D60	32.3
R6BH-M16S-DP20-10D80			D80	



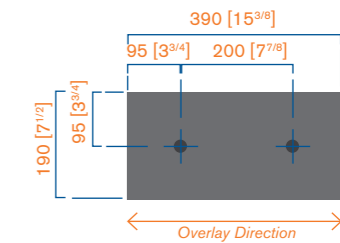
Duaplate® 390 Series Liners

Products with a mass over 25kg we recommend two persons or mechanical lifting.
M16x50lg studded liners to suit 200 hole centres, 390x390 liners

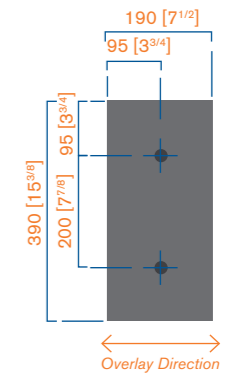
S3A Part No.	Total Thickness (mm)	Useable Thickness (mm)	Grade	Mass (kg)
S3A-M16S-DP07-06D60	13	7	D60	15.5
S3A-M16S-DP09-10D60	9	10	D60	22.7
S3A-M16S-DP09-10D80			D80	
S3A-M16S-DP12-10D60	12	10	D60	26.3
S3A-M16S-DP12-10D80			D80	
S3A-M16S-DP20-10D60	12	10	D60	35.8
S3A-M16S-DP20-10D80			D80	



R7AH Part No.	Total Thickness (mm)	Useable Thickness (mm)	Grade	Mass (kg)
R7AH-M16S-DP07-06D60	13	7	D60	4.1
R7AH-M16S-DP09-10D60	19	9	D60	5.3
R7AH-M16S-DP09-10D80			D80	
R7AH-M16S-DP12-10D60	22	12	D60	7.0
R7AH-M16S-DP12-10D80			D80	
R7AH-M16S-DP20-10D60	30	20	D60	11.7
R7AH-M16S-DP20-10D80			D80	
R7AH-M16S-DP25-10D80	35	25	D80	14.6
R7AH-M16S-DP36-10D80	46	36	D80	21.0



R7AV Part No.	Total Thickness (mm)	Useable Thickness (mm)	Grade	Mass (kg)
R7AV-M16S-DP07-06D60	13	7	D60	4.1
R7AV-M16S-DP09-10D60	19	9	D60	5.3
R7AV-M16S-DP09-10D80			D80	
R7AV-M16S-DP12-10D60	22	12	D60	7.0
R7AV-M16S-DP12-10D80			D80	
R7AV-M16S-DP20-10D60	30	20	D60	11.7
R7AV-M16S-DP20-10D80			D80	
R7AV-M16S-DP25-10D80	35	25	D80	14.6
R7AV-M16S-DP36-10D80	46	36	D80	21.0





AR Steel

Bradken's AR Steel (Q&T) provides an economic alternative to other abrasion and impact resistant materials on the market.

Bradken's AR Steel is a heat-treated, quench and tempered (Q&T) steel designed for applications where high impact and moderate abrasion are the primary cause of failure.

Material Information

Bradken's AR Steel (Q&T) is an abrasive resistant quench and tempered steel plate. The controlled chemistry and heat treatment provide a superior microstructure for an excellent combination of toughness and wear resistance. Bradken's AR Steel (Q&T) is available in a variety of sizes and thicknesses to suit a range of operating conditions.

Grade	Hardness (Brinell)	Hardness (Vickers)
400	400	420
450	450	475
500	500	530

AR Steel Adaptability

Abrasion Resistant steels can be adapted to suit custom applications through cutting, welding, machining and forming.

Welding

Bradken's AR Steel can be welded in accordance with AS1554.4. It is recommended that the plate should be pre-heated for all thicknesses. No post heating is required.

Forming and Fabrication

AR Steel can be pressed or rolled into curved liners or pipes. Their high strength properties also allow for fabrication into finished parts such as transfer chutes, deflectors or sample station parts e.g. cutters. It is also possible to machine AR steels to create complex shapes or countersink fasteners.

Cutting

Flame, plasma, laser, water-jet and machining are all viable forms of cutting AR Steels. The cutting method depends on the cutting parameters, accuracy and plate thickness.

Attachment Methods

AR Steel can be fabricated with welded studs in M16, M20 or M24.

Countersunk holes can also be machined to suit M16, M20 or M24 bolts.

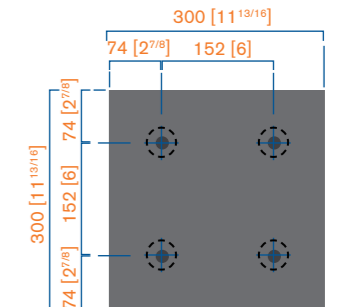
AR Steels can also be perimeter or plug welded in place

AR Steel (Q&T) 300 Series

Products with a mass over 25kg we recommend two person or mechanical lifting.

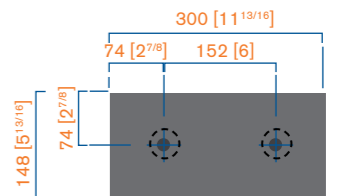
M16 Countersunk Bolts to suit 152 hole centres, 300x300 liners

S1A Part No.	Total Thickness (mm)	Useable Thickness (mm)	Grade	Mass (kg)
S1A-M16C-AR450-20	20	14	450	13.8
S1A-M16C-AR500-20			500	
S1A-M16C-AR450-32	32	26	450	22.3
S1A-M16C-AR500-32			500	
S1A-M16C-AR450-50	50	44	450	35.0
S1A-M16C-AR500-50			500	



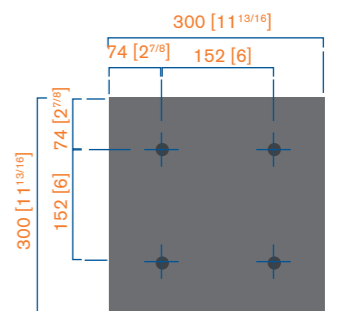
M16 Countersunk Bolts to suit 152 hole centres, 300x300 liners

R1A Part No.	Total Thickness (mm)	Useable Thickness (mm)	Grade	Mass (kg)
R1A-M16C-AR450-20	20	14	450	6.8
R1A-M16C-AR500-20			500	
R1A-M16C-AR450-32	32	26	450	11.0
R1A-M16C-AR500-32			500	
R1A-M16C-AR450-50	50	44	450	17.3
R1A-M16C-AR500-50			500	



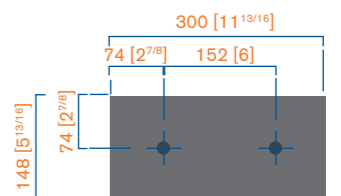
M16x50lg Studded to suit 152 hole centres, 300x300 liners

S1A Part No.	Total Thickness (mm)	Useable Thickness (mm)	Grade	Mass (kg)
S1A-M16S-AR450-20	20	14	450	13.8
S1A-M16S-AR500-20			500	
S1A-M16S-AR450-32	32	26	450	22.3
S1A-M16S-AR500-32			500	



M16x50lg Studded to suit 152 hole centres, 300x300 liners

R1A Part No.	Total Thickness (mm)	Useable Thickness (mm)	Grade	Mass (kg)
R1A-M16S-AR450-20	20	14	450	6.8
R1A-M16S-AR500-20			500	
R1A-M16S-AR450-32	32	26	450	11.0
R1A-M16S-AR500-32			500	



This product consists of a white iron casting bonded to a backing plate. Duablock's wear resistant microstructure, along with its impact absorbing backing plate, makes it perfect for high abrasion and high impact applications.

The Duablock casting is produced by Bradken's in-house foundries where an automated moulding machine allows for high volume, low-cost manufacturing. A heat treatment process is used to create a metallurgical bond between the casting and mild steel backing plate, whilst maximising its wear and impact resistance.

The Duablock cast material belongs to the high chromium abrasion-resistant cast iron alloys designated by Australian Standard – AS 2027–2007. The major alloying elements, chromium, carbon and molybdenum, give this material its superior abrasion and impact resistant properties.

Duablock® Types

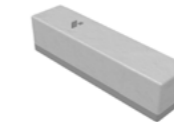
Duablock is a composite material used in mining applications experiencing severe wear.

Duablock® Wear Liners



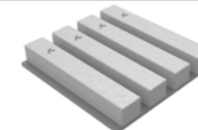
Studded and bolted wear liners for use in transfer chutes and hoppers.

Duablock® Wear Blocks



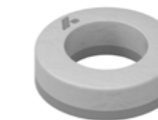
Versatile range of blocks for use as wear liners, tumble bars and ledge liners.

Duablock® Trap



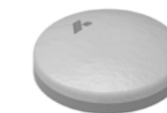
Studded rockbox liners for impact walls and transfer chutes.

Duablock® Nut



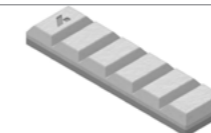
For protection of nuts or bolt heads. Can be used as a washer or welded in place.

Duablock® Button



For localised protection of earth moving equipment and fixed plant.

Duablock® Chokblock



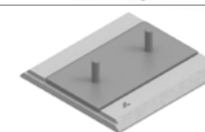
A unique product that can be formed and welded onto flat and curved surfaces.

Duablock® Microledge



For installation into transfer chutes to create tumble bars and rock boxes.

Duablock® Skirtliners



Heavy duty impact resistant conveyor skirt liners.

Duablock® Billets



Heavy duty bolted liners used for rock box ledges.

Duablock® Skidblock



For strategic protection of heavy earth moving equipment.

Duablock® Grizzly Caps



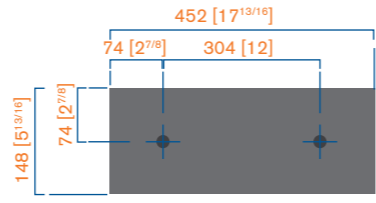
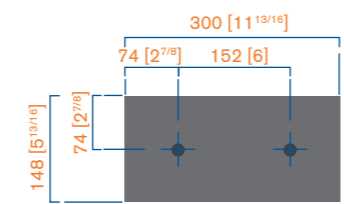
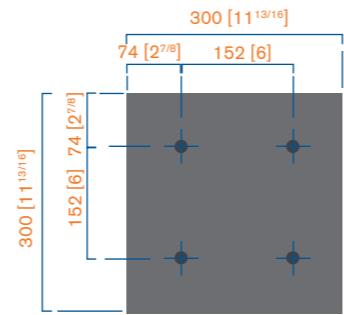
For protection of ROM beams and grizzly bars.

Duablock® 300 Series

Products with a mass over 25kg we recommend two people or mechanical lifting.
Liners to suit 152 hole centres, 300x300 liners.

M16S Utilises M16 Studs
M20F Utilises M20 Oval Headed Bolts

S1A Part No.	Total Thickness (mm)	Useable Thickness (mm)	Mass (kg)
S1A-M16S-DB14-06	20	14	14.5
S1A-M16S-DB20-10	30	20	21.5
S1A-M20F-DB22-10	32	22	22.3
S1A-M16S-DB30-10	40	30	28.6
S1A-M16F-DB30-10	40	30	27.9
S1A-M20F-DB40-10	50	40	35.0



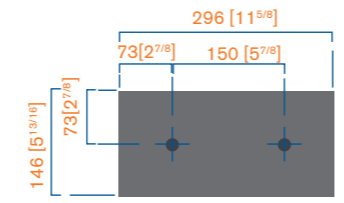
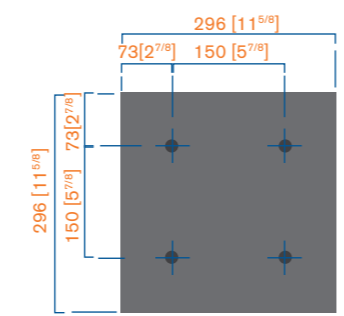
R1A Part No.	Total Thickness (mm)	Useable Thickness (mm)	Mass (kg)
R1A-M16S-DB20-10	30	20	10.6
R1A-M20F-DB22-10	32	22	11.0
R1A-M16S-DB24-8	32	24	11.0
R1A-M16F-DB30-10	40	30	14.1
R1A-M16S-DB30-10	40	30	14.1
R1A-M20F-DB40-10	50	40	17.3

R2B Part No.	Total Thickness (mm)	Useable Thickness (mm)	Mass (kg)
R2B-M16S-BD40-10	50	30	26.4

Duablock® 296 Series

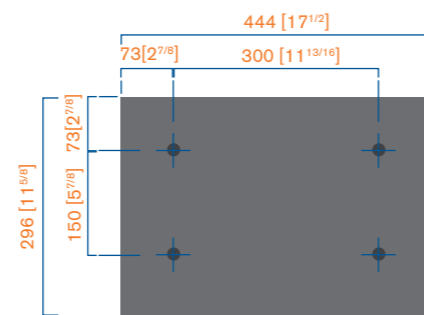
Products with a mass over 25kg we recommend two people or mechanical lifting.
M16x50lg studded liners to suit 150 hole centres, 296x296 liners.

S2A Part No.	Total Thickness (mm)	Useable Thickness (mm)	Mass (kg)
S2A-M16S-DB20-10	30	20	21.0
S2A-M16S-DB30-10	40	30	27.8



R4A Part No.	Total Thickness (mm)	Useable Thickness (mm)	Mass (kg)
R4A-M16S-DB20-10	30	20	10.3

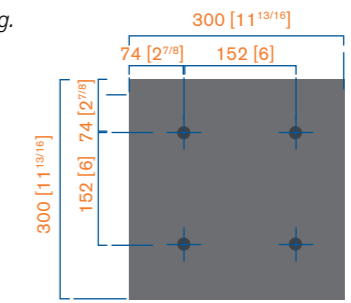
R6B Part No.	Total Thickness (mm)	Useable Thickness (mm)	Mass (kg)
R6B-M16S-DB30-10D70	40	30	41.8



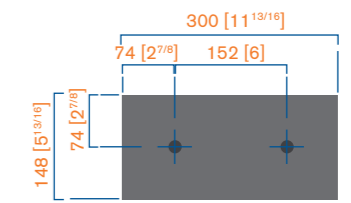
Duablock® Trap 300 Series

Products with a mass over 25kg we recommend two people or mechanical lifting.
M16x50lg studded liners to suit 152 hole centres, 300x300 liners.

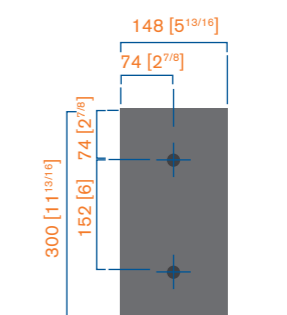
S1A Part No.	Total Thickness (mm)	Useable Thickness (mm)	Mass (kg)
S1A-M16S-DT40-10	D	C	26.0



R1AH Part No.	Total Thickness (mm)	Useable Thickness (mm)	Mass (kg)
R1AH-M16S-DT40-10	D	C	13.0



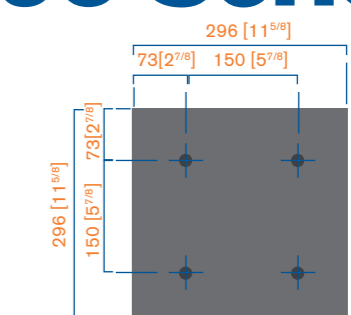
R1AV Part No.	Total Thickness [mm]	Useable Thickness [mm]	Mass [kg]
R1AV-M16S-DT40-10	D	C	13.0



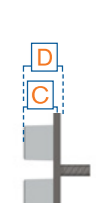
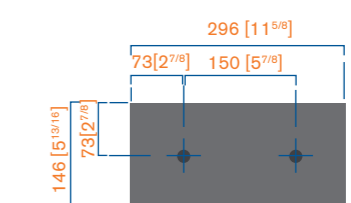
Duablock® Trap 296 Series

Products with a mass over 25kg we recommend two people or mechanical lifting.
M16x50lg studded liners to suit 150 hole centres, 296x296 liners.

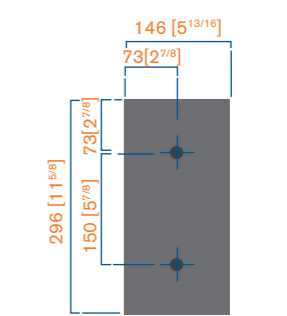
S2A Part No.	Total Thickness (mm)	Useable Thickness (mm)	Mass (kg)
S2A-M16S-DT40-10	D	C	26.0



R4AH Part No.	Total Thickness [mm]	Useable Thickness [mm]	Mass [kg]
R4AH-M16S-DT40-10	D	C	13.0



R4AV Part No.	Total Thickness (mm)	Useable Thickness (mm)	Mass (kg)
R4AV-M16S-DT40-10	D	C	13.0



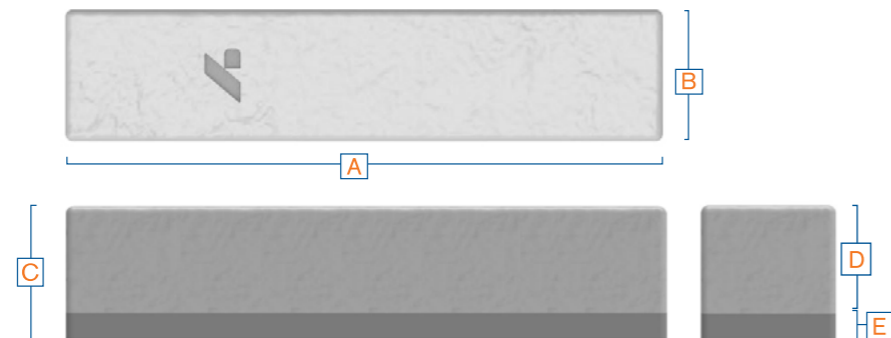
Duablock® Wear Block

Please contact your local sales office for pricing and availability.

Other sizes can be made on request.

Products with a mass over 25kg we recommend two person or mechanical lifting.

Part No.	Reference No.	A	B	C	D	E	Mass (kg)
DB200X25X25WBA	BD200X25X25D70	200	25	25	15	10	1
DB300X25X25WBA	BD300X25X25D70	300	25	25	15	10	1.5
DB75X50X32WBA	BD75X50X32D70	75	50	32	22	10	1
DB300X50X32WBA	BD300X50X32D70	300	50	32	22	10	3.8
DB152X75X38WBA	BD152X75X38D70	152	75	38	28	10	3.5
DB75X50X50WBA	BD75X50X50D70	75	50	50	40	10	1.5
DB90X50X50WBA	BD90X50X50D70	90	50	50	40	10	1.8
DB115X50X50WBA	BD115X50X50D70	115	50	50	40	10	2.3
DB120X50X50WBA	BD120X50X50D70	120	50	50	40	10	2.4
DB128X50X50WBA	BD128X50X50D70	128	50	50	40	10	2.6
DB150X50X50WBA	BD150X50X50D70	150	50	50	40	10	3.0
DB152X75X50WBA	BD152X75X50D70	152	75	50	40	10	4.5
DB190X50X50WBA	BD190X50X50D70	190	50	50	40	10	3.8
DB210X50X50WBA	BD210X50X50D70	210	50	50	40	10	4.2
DB215X50X50WBA	BD215X50X50D70	215	50	50	40	10	4.3
DB230X50X50WBA	BD230X50X50D70	230	50	50	40	10	4.6
DB294X50X50WBA	BD294X50X50D70	294	50	50	40	10	5.8
DB300X50X50WBA	BD300X50X50D70	300	50	50	40	10	5.9
DB432X50X50WBA	BD432X50X50D70	432	50	50	40	10	8.5
DB100X75X76WBA	BD100X75X75D70	100	75	76	60	16	4.5
DB150X75X76WBA	BD150X75X75D70	150	75	76	60	16	6.8
DB200X75X76WBA	BD200X75X75D70	200	75	76	60	16	9.0
DB250X75X76WBA	BD250X75X75D70	250	75	76	60	16	11.2
DB300X75X76WBA	BD300X75X75D70	300	75	76	60	16	13.5
DB340X75X76WBA	BD340X75X75D70	340	75	76	60	16	15.3
DB150X100X100WBA	BD150X100X100D70	150	100	100	80	20	11.8
DB241X100X100WBA	BD241X100X100D70	241	100	100	80	20	19
DB300X100X100WBA	BD300X100X100D70	300	100	100	80	20	23.6
DB300X140X100WBA	BD300X140X100D70	300	140	100	80	20	33



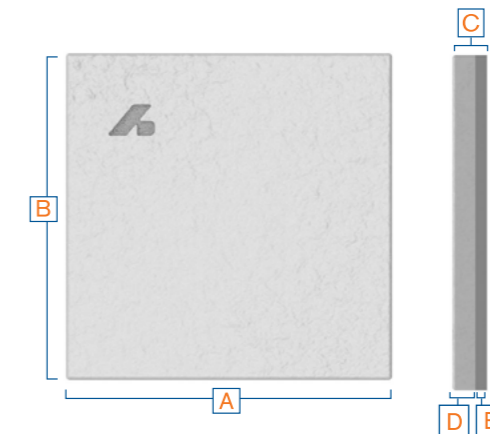
Duablock® Wear Liners

Please contact your local sales office for pricing and availability.

Other sizes can be made on request.

Products with a mass over 25kg we recommend two person or mechanical lifting.

Part No.	Reference No.	A	B	C	D	E	Mass (kg)
DB354X354X30WBA	BD354X354X30D70	354	354	30	20	10	29.6
DB430X210X30WBA	BD430X210X30D70	430	210	30	20	10	21.3
DB400X366X30WBA	BD400X366X30D70	400	366	30	20	10	34.5
DB294X254X30WBA	BD294X254X30D70	294	254	30	20	10	17.6
DB296X296X30WBA	BD296X296X30D70	296	296	30	20	10	20.7
DB296X146X30WBA	BD296X146X30D70	296	146	30	20	10	10.2
DB452X300X30WBA	BD450X300X30D70	452	300	30	20	10	32
DB300X300X30WBA	BD300X300X30D70	300	300	30	20	10	21.2
DB300X148X30WBA	BD300X150X30D70	300	148	30	20	10	10.5
DB100X100X50WBA	BD100X100X50D70	100	100	50	25	25	4
DB436X240X40WBA	BD436X240X40D70	436	240	40	30	10	32.9
DB300X300X40WBA	BD300x300x40D70	300	300	40	30	10	28.3
DB300X148X40WBA	BD300x148x40D70	300	148	40	30	10	14
DB296X296X40WBA	BD296X296X40D70	296	296	40	30	10	27.6
DB300X138X40WBA	BD300X138X40D70	300	138	40	30	10	13
DB446X296X40WBA	BD446X296X40D70	446	296	40	30	10	41.5
DB300X200X40WBA	BD300X200X40D70	300	200	40	30	10	18.9
DB241X100X58WBA	BD241X100X58D70	241	100	58	38	20	11
DB150X100X58WBA	BD150X100X58D70	150	100	58	38	20	6.9
DB452X148X50WBA	BD452X148X50D70	452	148	50	40	10	26.3
DB436X240X50WBA	BD436X240X50D70	436	240	50	40	10	41.1
DB300X300X50WBA	BD300X300X50D70	300	300	50	40	10	35.4
DB300X148X50WBA	BD300X148X50D70	300	148	50	40	10	17.5
DB300X138X50WBA	BD300X138X50D70	300	138	50	40	10	16.3
DB300X200X50WBA	BD300X200X50D70	300	200	50	40	10	23.6

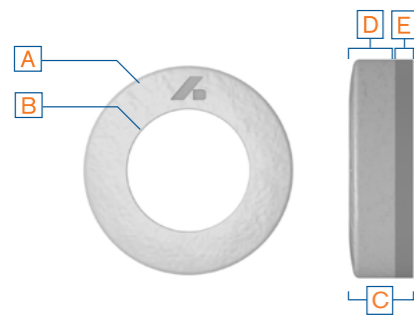


Duablock[®] Nut

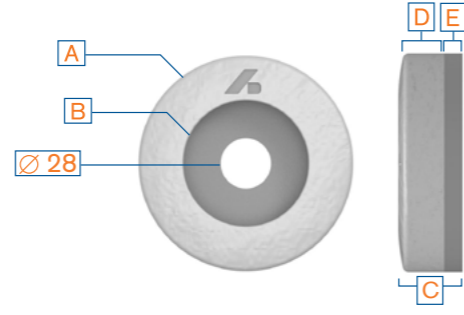
Please contact your local sales office for pricing and availability.
Other sizes can be made on request.

Part No.	Ref No.	Type	A	B	C	D	E	Mass (kg)
DB100X50X27NTA	BD100(50)X27D70	A	100	50	27	17	10	1.3
DB100X70X35NTA	BD100(70)X35D70		100	70	35	25	10	1.2
DB130X80X27NTA	BD130(80)X27D70		130	80	27	17	10	1.8
DB100X50X27NTB	-	B	100	50	27	17	10	1.6
DB100X70X35NTB	BD100(70)X35D70FB		100	70	35	25	10	2
DB130X80X27NTB	-		130	80	27	17	10	2.7

Type A



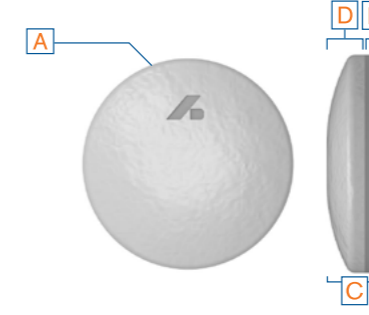
Type B (Washer Type)



Duablock[®] Button

Please contact your local sales office for pricing and availability.
Other sizes can be made on request.

Part No.	Ref No.	A	B	C	D	E	Mass (kg)
DB90X90X32BTA	BD90X32D70	90	-	32	20	12	1.6
DB75X75X27BTA	BD75X27D70	75	-	27	17	10	1
DB115X115X32BTA	BD115X32D70	115	-	32	20	12	2.7
DB150X150X41BTA	BD150X41D70	150	-	41	25	16	5.7
DB90X90X56BTA	BD90X56D70	90	-	56	46	10	2.8
DB90X90X46BTA	BD90X46D70	90	-	46	36	10	2.3

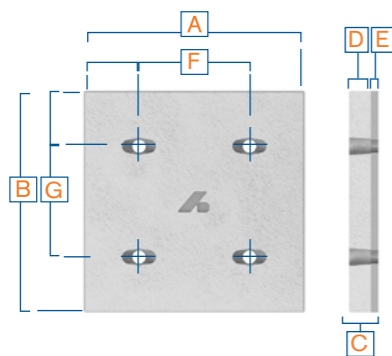


Duablock[®] Bolted Liners

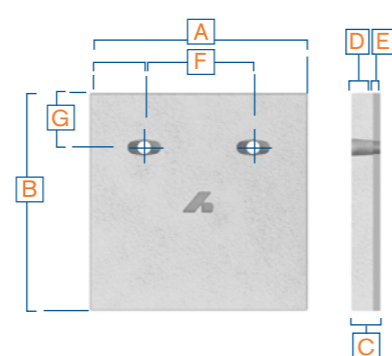
Please contact your local sales office for pricing and availability.
Other sizes can be made on request.

Part No.	Ref No.	Type	A	B	C	D	E	F	G	Mass (kg)	Fastener Type
S1C-M16F-DB30-10	BD300X300X40D70-2H	B	300	300	40	30	10	152	150	29	M16 OVAL HEAD BOLT (X2)
S1A-M16F-DB30-10	BD300X300X40-2H152	A		300	40	30	10		152	29	M16 OVAL HEAD BOLT (X4)
R1A-M16F-DB30-10	BD300X148X40D70-2H	B		148	40	30	10		74	14	M16 OVAL HEAD BOLT (X2)
S1A-M16F-DB24-8	BD300X148X32D70-2HM16	B		148	32	24	8		74	12	M16 OVAL HEAD BOLT (X2)
R1A-M16F-DB24-8	BD300X300X32D70-2HM16	A		300	32	24	8		152	23	M16 OVAL HEAD BOLT (X4)
S1A-M20F-DB22-10	BD300X300X32D70-4H	A		300	32	22	10		152	23	M20 OVAL HEAD BOLT (X4)
R1A-M20F-DB22-10	BD300X148X32D70-2H	B		148	32	22	10		152	12	M20 OVAL HEAD BOLT (X2)
DB300X200X32BLA	BD300X200X32D70-2H	B		200	32	22	10		74	16	M20 OVAL HEAD BOLT (X2)
S1A-M20F-DB40-10	BD300X300X50D70-4H	A		300	50	40	10		152	36	M20 OVAL HEAD BOLT (X4)
R1A-M20F-DB40-10	BD300X148X50D70-2H	B		148	50	40	10		74	18	M20 OVAL HEAD BOLT (X2)

Type A



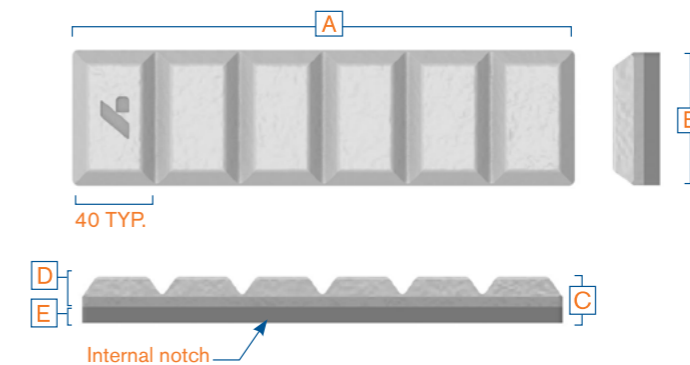
Type B



Duablock[®] Chokblock

Please contact your local sales office for pricing and availability.
Other sizes can be made on request.

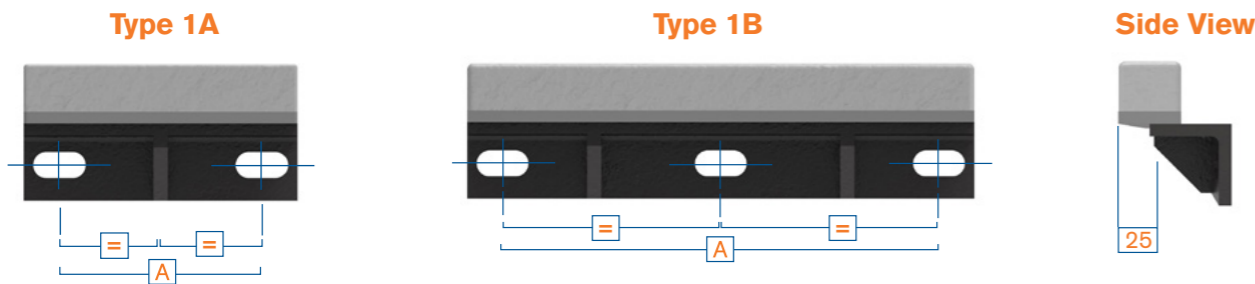
Part No.	Ref No.	A	B	C	D	E	Mass (kg)
DB240X40X23CBA	BD240X40X23D70N	240	40	23	15	8	1.5
DB240X50X23CBA	BD240X50X23D70N	240	50	23	15	8	1.8
DB240X65X23CBA	BD240X65X23D70N	240	65	23	15	8	2.4
DB240X90X29CBA	BD240X90X29D70N	240	90	29	17	12	4.5
DB240X130X29CBA	BD240X130X29D70N	240	130	29	17	12	6.4
DB240X25X23CBA	BD240X25X23D70N	240	25	23	15	8	1.0



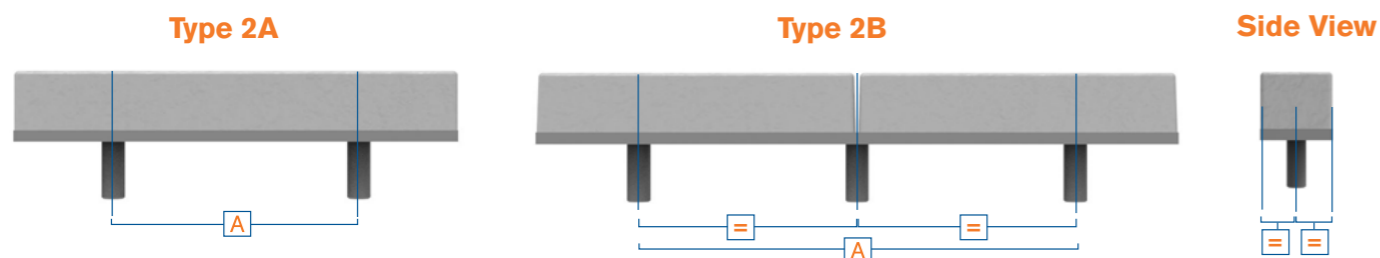
Duablock® Microledge

Please contact your local sales office for pricing and availability.
Other sizes can be made on request.

Part No.	Alternate Part No.	Type	Block Size	Mount Type	A	Mass (kg)
DB128X50X50ML1A	BD128X50X50D70BKT	1A	128X50X50	128X65X65X10 ANGLE	68	3.8
DB150X50X50ML1A	BD150X50X50D70BKT	1A	150X50X50	150X65X65X10 ANGLE	90	4.4
DB190X50X50ML1A	BD190X50X50D70BKT	1A	190X50X50	190X65X65X10 ANGLE	130	5.6
DB210X50X50ML1A	BD210X50X50D70BKT	1A	210X50X50	210X65X65X10 ANGLE	150	6.1
DB230X50X50ML1A	BD230X50X50D70BKT	1A	230X50X50	230X65X65X10 ANGLE	170	6.7
DB294X50X50ML1A	BD294X50X50D70BKT	1A	294X50X50	294X65X65X10 ANGLE	234	8.7
DB300X50X50ML1A	BD300X50X50D70BKT	1A	300X50X50	300X65X65X10 ANGLE	240	8.8
DB432X50X50ML1B	BD432X50X50D70BKT	1B	432X50X50	432X65X65X10 ANGLE	372	12.7



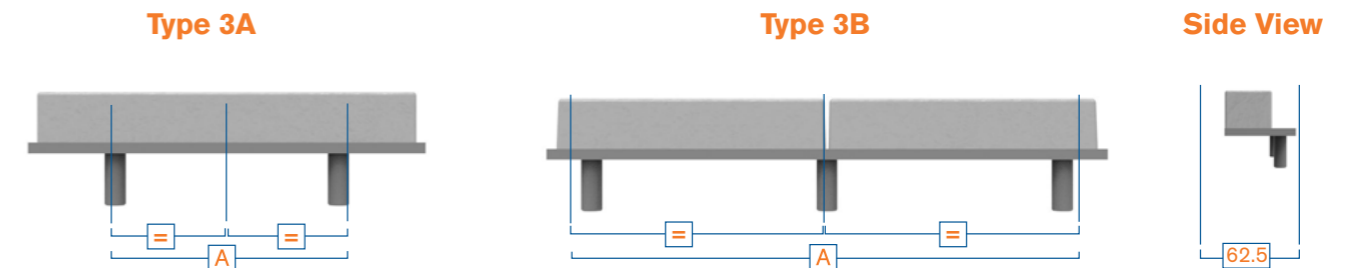
Part No.	Alternate Part No.	Type	Block Size	Mount Type	A	Mass (kg)
DB128X50X50ML2A	BD128X50X50D70STD2	2A	128X50X50	M16X50mm STUDS (X2)	68	3
DB150X50X50ML2A	BD150X50X50D70STD2	2A	150X50X50	M16X50mm STUDS (X2)	90	3
DB190X50X50ML2A	BD190X50X50D70STD2	2A	190X50X50	M16X50mm STUDS (X2)	130	4
DB210X50X50ML2A	BD210X50X50D70STD2	2A	210X50X50	M16X50mm STUDS (X2)	150	4
DB230X50X50ML2A	BD230X50X50D70STD2	2A	230X50X50	M16X50mm STUDS (X2)	170	5
DB294X50X50ML2A	BD294X50X50D70STD2	2A	294X50X50	M16X50mm STUDS (X2)	234	6
DB300X50X50ML2A	BD300X50X50D70STD2	2A	300X50X50	M16X50mm STUDS (X2)	240	6
DB432X50X50ML2A	BD432X50X50D70STD2	2A	432X50X50	M16X50mm STUDS (X2)	372	8
DB432X50X50ML2B	BD432X50X50D70STD3	2B	432X50X50	M16X50mm STUDS (X3)	372	8



Duablock® Microledge

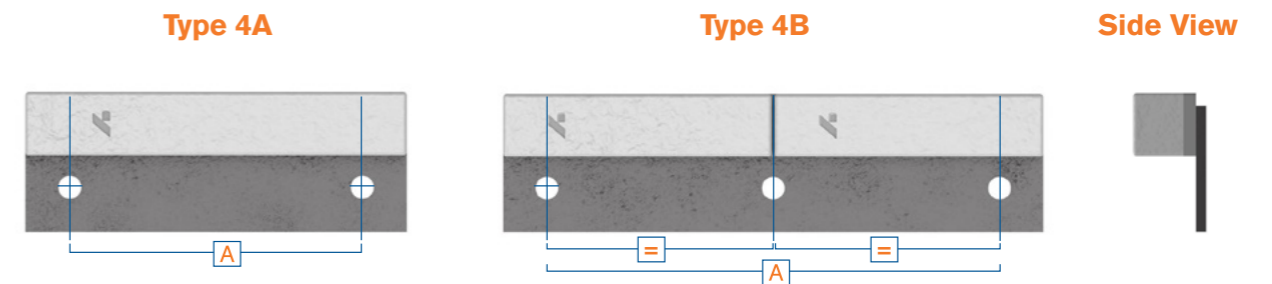
Please contact your local sales office for pricing and availability.
Other sizes can be made on request.

Part No.	Alternative Part No.	Type	Block Size	Mount Type	A	Mass (kg)
DB128X50X50ML3A	BD128X50(75)X50D70STD2	3A	128X50X50	M16X50mm STUDS (X2)	68	2.9
DB150X50X50ML3A	BD150X50(75)X50D70STD2	3A	150X50X50	M16X50mm STUDS (X2)	90	3.4
DB190X50X50ML3A	BD190X50(75)X50D70STD2	3A	190X50X50	M16X50mm STUDS (X2)	130	4.3
DB210X50X50ML3A	BD210X50(75)X50D70STD2	3A	210X50X50	M16X50mm STUDS (X2)	150	4.8
DB230X50X50ML3A	BD230X50(75)X50D70STD2	3A	230X50X50	M16X50mm STUDS (X2)	170	5.2
DB294X50X50ML3A	BD294X50(75)X50D70STD2	3A	294X50X50	M16X50mm STUDS (X2)	234	6.6
DB300X50X50ML3A	BD300X50(75)X50D70STD2	3A	300X50X50	M16X50mm STUDS (X2)	240	6.8
DB432X50X50ML3A	BD432X50(75)X50D70STD2	3A	432X50X50	M16X50mm STUDS (X2)	372	9.5
DB432X50X50ML3B	BD432X50(75)X50D70STD3	3B	432X50X50	M16X50mm STUDS (X3)	372	9.6



Part No.	Alternate Part No.	Type	Block Size	Mount Type	A	Mass (kg)
DB115X50X50ML4A	BKD4447-115	4A	115X50X50	115X100X8 PLATE	45	2.9
DB150X50X50ML4A	BKD4447-150	4A	150X50X50	150X100X8 PLATE	80	3.8
DB210X50X50ML4A	BKD4447-210	4A	210X50X50	210X100X8 PLATE	140	5.3
DB300X50X50ML4A	BKD4447-300	4A	300X50X50	300X100X8 PLATE	230	7.6
DB432X50X50ML4B	BKD4447-432	4B	432X50X50	432X100X8 PLATE	181	11

*To suit a M16 Hex head bolt



Duablock® Skirtliners

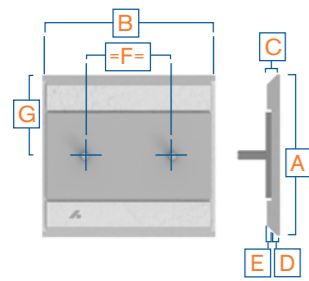
Please contact your local sales office for pricing and availability.

Other sizes and stud sizes can be made on request.

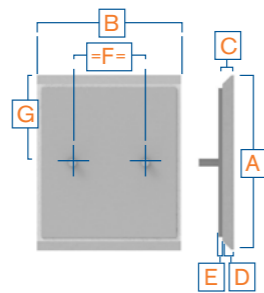
Part No.	Ref No.	Type	A	B	C	D	E	F	G	Mass (kg)
RSL-300x300x25-DB	-	1A-RSL	300	300	25	15	10	152	150	15
RSL-368x300x25-DB	-	1A-RSL	350	300	25	15	10	152	175	18.8
BD364X300X32D70STD2	-	1B-RSL	364	300	32	24	8	152	182	25.1
BD746X250X21STD2	-	1C	250	746	20	10	10	380	125	28.0
BD496X250X20D70	-	1D	250	496	20	10	10	350	125	18.6
BD504X250X20D70	-	1D	250	504	20	10	10	358	125	18.8
RSL-368x300x42-DB	-	2A-RSL	361	300	42	32	10	152	180.5	25.3
DB300X296X32LSA	BD300X300X32D70-2H	3A-RSL	300	296	32	24	8	150	150	20.3
DB392X296X32LSA	BD392X298X32D70-2HM20	3A-RSL	392	296	32	24	8	150	196	27.5
DB200X452X32LSA	BKD2974-10	4	200	452	32	22	10	304	74	22
DB296X452X32LSA	BKD2974-11	4	296	452	32	22	10	304	74	33

* RSL indicates the liner is Revolver skirt liner system compatible

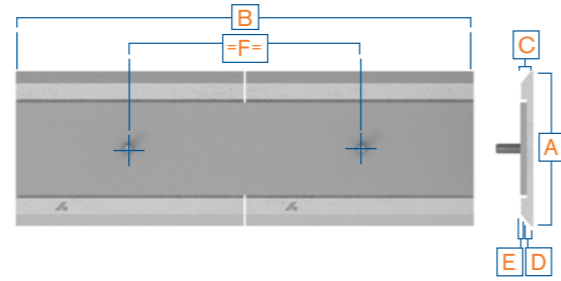
Type 1A RSL



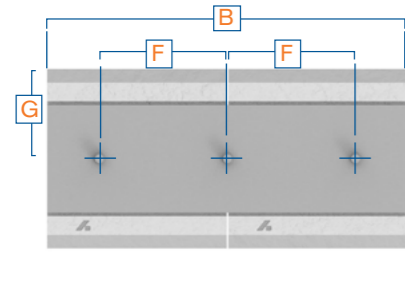
Type 1B RSL



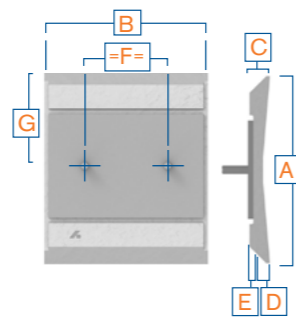
Type 1C



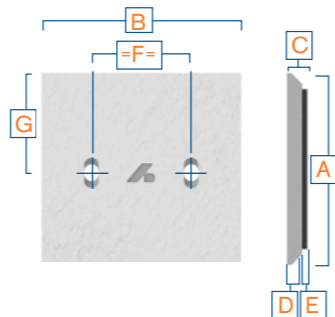
Type 1D



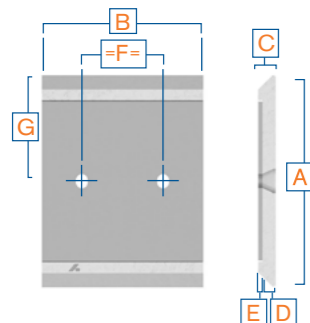
Type 2A RSL



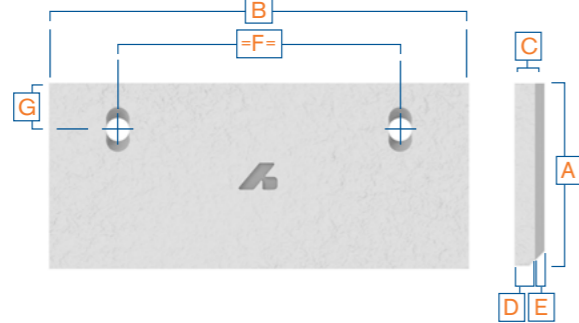
Type 3A RSL



Type 3A RSL



Type 4

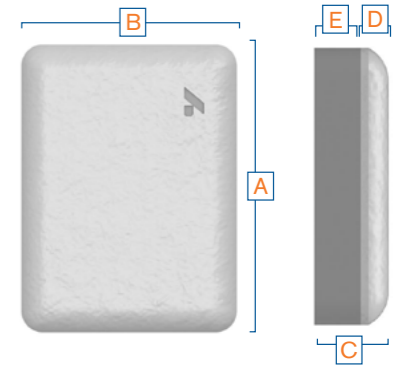


Duablock® Skidblock

Please contact your local sales office for pricing and availability.

Products with a mass over 25kg we recommend two person or mechanical lifting.

Part No.	Ref No.	A	B	C	D	E	Mass (kg)
DB250X150X32BSA	BD250X150X32D70	250	150	32	20	12	9
DB250X250X32BSA	BD250X250X32D70	250	250	32	20	12	16
DB200X150X32BSA	BD200X150X32D70	200	150	32	20	12	8
DB200X150X45BSA	BD200X150X45D70	200	150	45	20	25	11
DB250X150X45BSA	BD250X150X45D70	250	150	45	20	25	13
DB250X250X45BSA	BD250X250X45D70	250	250	45	20	25	22
DB250X250X75BSA	BD250X250X75D70	250	250	75	50	25	37
DB200X150X75BSA	BD200X150X75D70	200	150	75	50	25	18
DB250X150X75BSA	BD250X150X75D70	250	150	75	50	25	22



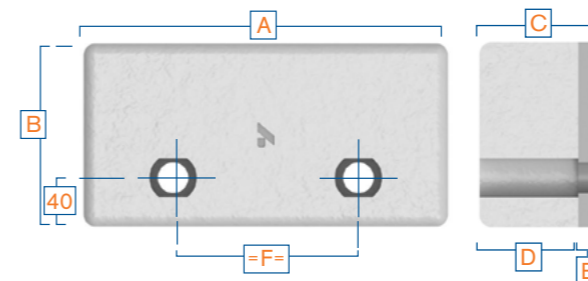
Duablock® Billets

Products with a mass over 25kg we recommend two people or mechanical lifting.

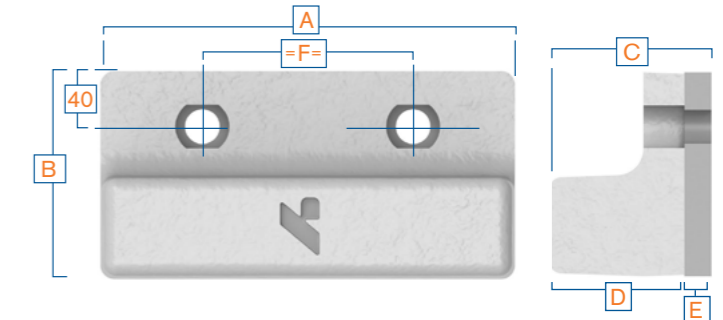
Bolt type: M20 Hex Head

Part No.	Ref No.	Type	A	B	C	D	E	F	Mass (kg)
DB299X150X100BLA	BD299X150X100D70-2H	A	299	150	100	80	20	152	33.3
DB222X150X100BLA	BD222X150X100D70-2H		76					24.4	
DB146X150X100BLA	BD146X150X100D70-2H		76					15.5	
DB70X150X100BLA	BD70X150X100D70-1H		-					7.5	
DB299X150X120BLB	BD299X150X120D70L-2H	B	299	120	100	100	20	152	28.6
DB222X150X120BLB	BD222X150X120D70L-2H		76					20.8	
DB146X150X120BLB	BD146X150X120D70L-2H		76					13.4	

Type A



Type B



Duablock® HD Billets

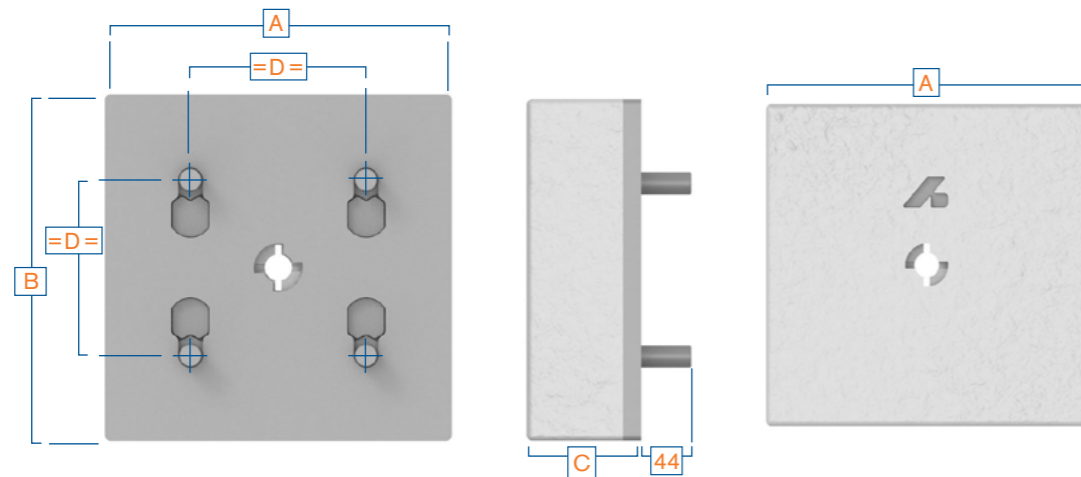
Products with a mass over 25kg we recommend two people or mechanical lifting.

M20 PC8.8 fasteners included.

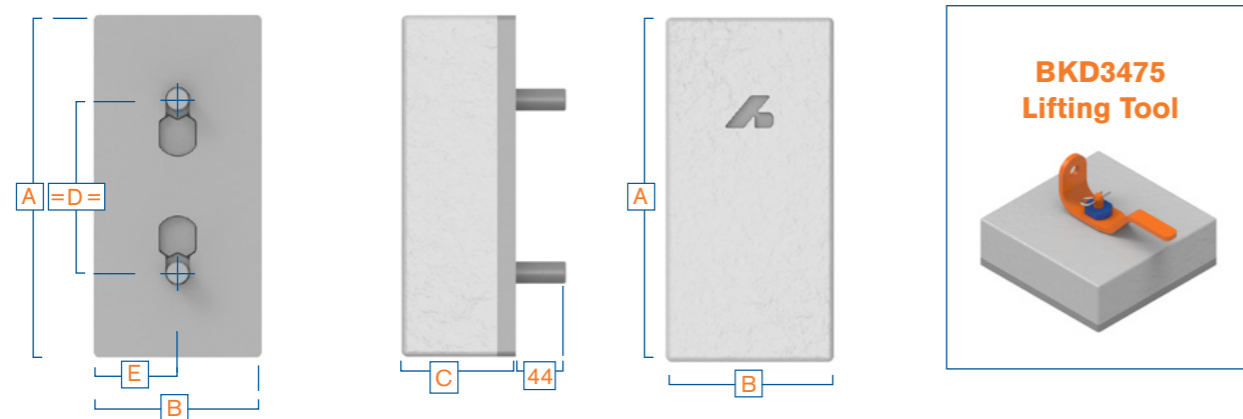
Part No.	Ref No.	Type	A	B	C	D	E	Mass (kg)
DB300X146X100JBA	BD300X146X100D70-2S	2	300	146	100	152	73	34
DB270X146X100JBA	BD270X146X100D70-2S		270					31
DB250X146X100JBA	BD250X146X100D70-2S		250					29
DB190X146X100JBA	BD190X146X100D70-2S		190					22
DB170X146X100JBA	BD170X146X100D70-2S		170					20
DB150X146X100JBA	BD150X146X100D70-2S		150					17
DB300X300X100JBA	BD300X300X100D70-4S	1	300	300		152	-	71*

Lifting tool available [BKD3475], contact your local sales representative for more details

Type 1



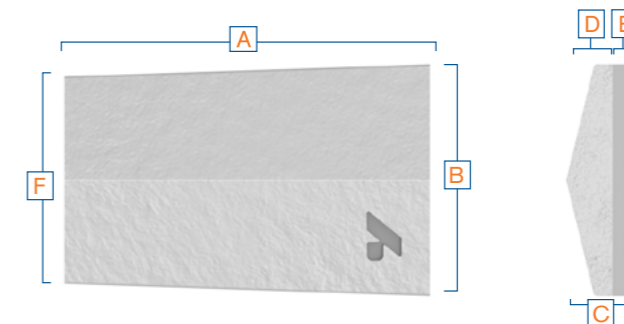
Type 2



Duablock® Grizzly Cap

Please contact your local sales office for pricing and availability.

Part No.	Ref No.	A	B	F	C	D	E	Mass (kg)
DB305X150X38GCA	BD305X150(141)X50D70	305	150	141	50	38	12	14
DB305X141X38GCA	BD305X141(131)X50D70		141	131				13
DB305X131X38GCA	BD305X131(122)X50D70		131	122				12
DB305X122X38GCA	BD305X122(113)X50D70		122	113				11
DB305X113X38GCA	BD305X113(103)X50D70		113	103				10
DB305X103X38GCA	BD305X103(94)X50D70		103	94				10
DB305X94X38GCA	BD305X94(84)X50D70		94	84				9
DB305X84X38GCA	BD305X84(75)X50D70		84	75				8
DB300X190X38GCA	BD300X190(170)X50D70	300	190	170	50	38	12	17
DB300X170X38GCA	BD300X170(150)X50D70		170	150				15
DB300X150X38GCA	BD300X150(130)X50D70		150	130				13
DB300X130X38GCA	BD300X130(110)X50D70		130	110				11
DB300X110X38GCA	BD300X110(90)X50D70		110	90				10
DB264X190X38GCA	BD264X190(180)X50D70	264	190	180	50	38	12	15
DB264X180X38GCA	BD264X180(170)X50D70		180	170				14
DB264X170X38GCA	BD264X170(160)X50D70		170	160				13
DB264X160X38GCA	BD264X160(150)X50D70		160	150				12
DB264X150X38GCA	BD264X150(140)X50D70		150	140				12
DB328X100X40GCA	BD328X100(90)X50D70	328	100	90	50	40	10	10
DB328X90X40GCA	BD328X90(80)X50D70		90	80				9
DB328X80X40GCA	BD328X80(70)X50D70		80	70				8
DB328X70X40GCA	BD328X70(60)X50D70		70	60				7
DB328X60X40GCA	BD328X60(50)X50D70		60	50				8
DB300X220X38GCA	BD300X220(212)X50D70	300	220	212	50	38	12	21
DB300X212X38GCA	BD300X212(204)X50D70		212	204				20
DB300X204X38GCA	BD300X204(196)X50D70		204	196				19
DB300X196X38GCA	BD300X196(188)X50D70		196	188				18
DB300X188X38GCA	BD300X188(180)X50D70		188	180				18
DB280X180X38GCA	BD280X180(170)X50D70		180	170				16
DB280X170X38GCA	BD280X170(160)X50D70		170	160				15
DB280X160X38GCA	BD280X160(150)X50D70		160	150				14
DB280X150X38GCA	BD280X150(140)X50D70	150	140	13				
DB280X140X38GCA	BD280X140(130)X50D70	140	130	12				
DB295X145X44GCA	BD295X145(136)X64D70	295	145	136	64	44	20	13
DB295X136X44GCA	BD295X136(128)X64D70		136	128				15
DB295X127X44GCA	BD295X127(119)X64D70		127	119				16
DB295X119X44GCA	BD295X119(110)X64D70		119	110				17
DB200X105X38GCA	BD200X105X48D70	200	105	-	48	38	10	5
DB417X105X38GCA	BD417X105(99)X48D70	417	99	99				7
DB417X99X38GCA	BD417X99(93)X48D70		99	93				8
DB417X82X38GCA	BD417X82(86)X48D70		82	86				8
DB417X86X38GCA	BD417X86(80)X48D70		86	80				9





Duracast®

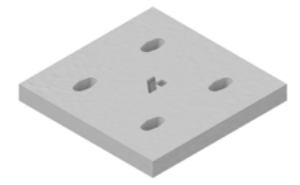
Duracast is a well-established white iron product alloyed with chromium and other elements to give significant abrasion and impact resistant properties.

The structure of Duracast is composed of iron and chromium carbides, fixed in a matrix. This structure allows Duracast to be utilised in abrasive and high impact conditions found throughout the mining and mineral processing industries.

Bradken Duracast products include billets and liner plates that can be made to the customers specification or supplied from our range of stock sizes. Bradken's Duracast products can be custom designed to meet any situation regardless of any size and shape concerns. Bradken can also supply cut and shaped liners to be strategically placed on fixed plant equipment so that a unique wear package can be created, maximising wear life. This makes Duracast the perfect material for chutes, drop boxes, bin and hopper liners.

Bradken primarily supplies cast billet and liner plates produced to the Duracast specifications. However, Bradken can produce billets and liner plates from the following alloys:

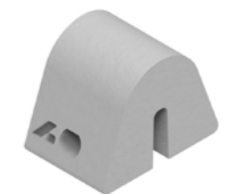
Duracast®	N460
Duracast®	DC17
Duracast®	DC27



Duracast® Liners



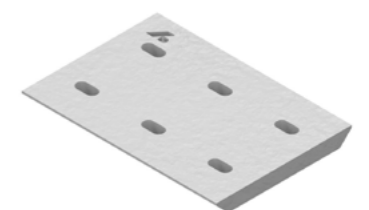
Duracast® Billets



Duracast® Nose Bars



Duracast® Lip Liners

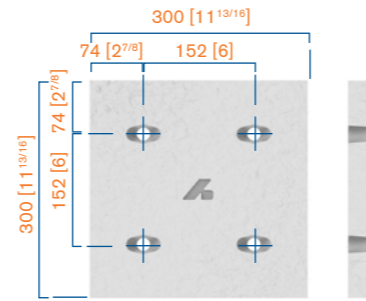


Duracast® Skirt Liners

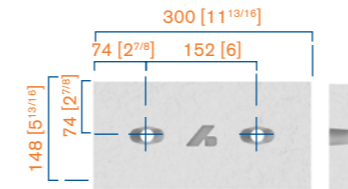
Duracast® 300 Series

Products with a mass over 25kg we recommend two people or mechanical lifting

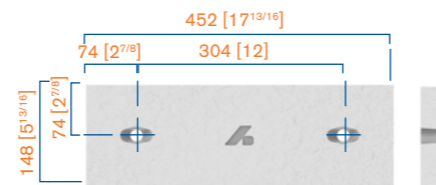
S1A Part No.	Ref No.	Grade	Total Thickness (mm)	Useable Thickness (mm)	Mass (kg)
S1A-M20F-N460-32	D012895, S6A, ML3, P1	N460	32	26	22.3
S1A-M22F-N460-32	D01777, L18W	N460			
S1A-M22F-DC17-32	D02108, L18W CrMo	DC17			



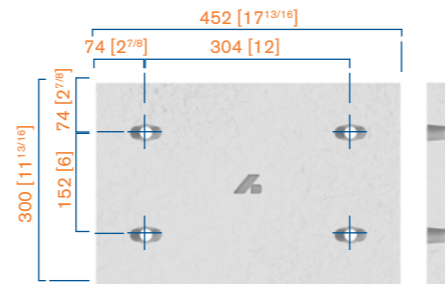
R1A Part No.	Ref No.	Grade	Total Thickness (mm)	Useable Thickness (mm)	Mass (kg)
R1A-M20F-N460-32	D012896, ML1, S97-2 P2	N460	32	26	11.0
R1A-M22F-N460-32	D01776, L6W	N460			
R1A-M22F-DC17-32	D02107, L6W CrMo	DC17			



R2A Part No.	Ref No.	Grade	Total Thickness (mm)	Useable Thickness (mm)	Mass (kg)
R2A-M20F-N460-32	D00360, S101, P4	N460	32	26	16.6
R2A-M22F-N460-32	D01775, L4W	N460			
R2A-M22F-DC17-32	D02106, L4W CrMo	DC17			



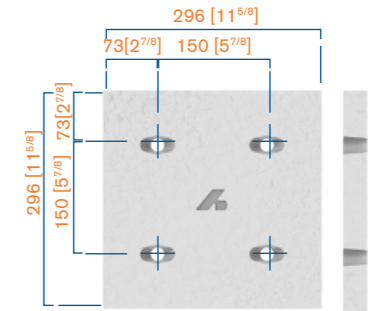
R3B Part No.	Ref No.	Grade	Total Thickness (mm)	Useable Thickness (mm)	Mass (kg)
R3B-M20F-N460-32	D05758, S1A, ML10,P6	N460	32	26	33.6
R3B-M22F-N460-32	D01774, L3W	N460			
R3B-M22F-DC17-32	D02105, L3W CrMo	DC17			



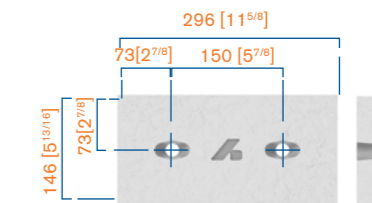
Duracast® 296 Series

Products with a mass over 25kg we recommend two people or mechanical lifting

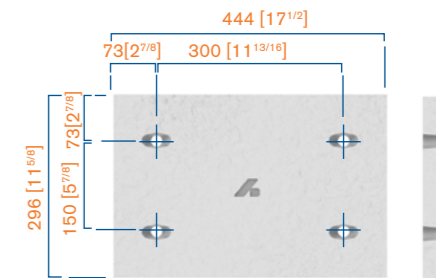
S2A Part No.	Ref No.	Grade	Total Thickness (mm)	Useable Thickness (mm)	Mass (kg)
S2A-M20F-N460-20	D03779, L1	N460	20	14	13.4
S2A-M20F-N460-32	D04066, N3	N460	32	26	21.7



R4A Part No.	Ref No.	Grade	Total Thickness (mm)	Useable Thickness (mm)	Mass (kg)
R4A-M20F-N460-20	D03787, L3	N460	20	14	6.6
R4A-M20F-N460-32	D04064, N1	N460	32	26	10.7



R6A Part No.	Ref No.	Grade	Total Thickness (mm)	Useable Thickness (mm)	Mass (kg)
R6A-M20F-N460-20	D010842	N460	20	14	20.6





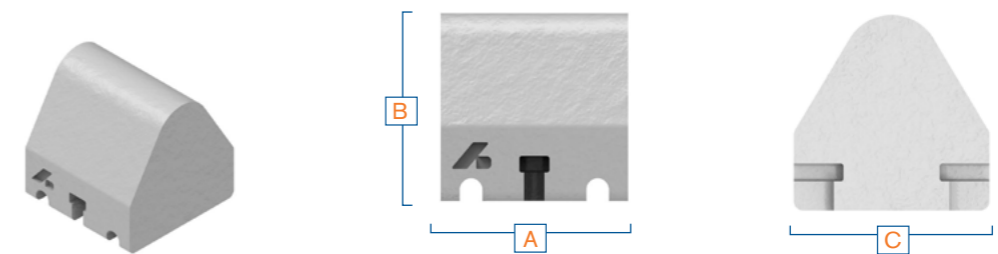
Duracast® Nose Bars

Products with a mass of 25kg we recommend two people or mechanical lifting.

Part No.	Dimensions			Material	Mass (kg)
	A (mm)	B (mm)	C (mm)		
R200	200	200	200	N460	46
BN150-N460	150	170	229	N460	27
BN150-DC17	150	170	229	DC17	27
BKD1484*	240	180	250	N460	67
BKD1248	150	275	229	N460	32

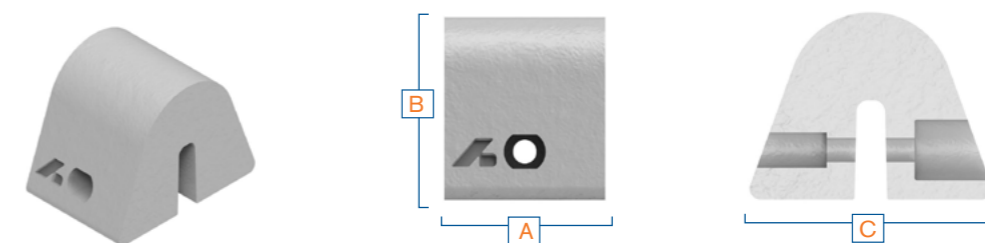
R200

To suit AS1110.1 M20 Hex Head Bolt



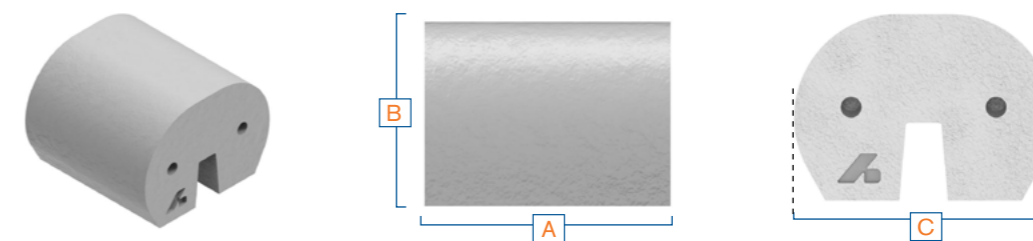
BN150-N460/BN150-DC17

To suit AS1110.1 M20 Hex Head Bolt



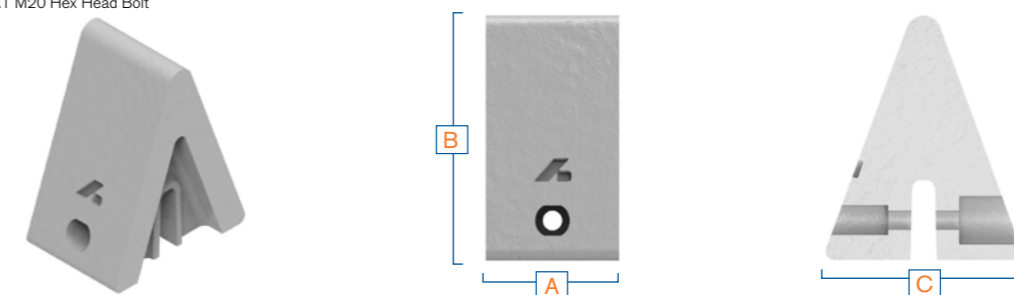
BKD1484*

*Lifting tool available, please contact Bradken for more information (REF. BKD3049)



BKD1248

To suit AS1110.1 M20 Hex Head Bolt



Duracast® N460 Liners

Please contact your local sales office for pricing and availability.

Other sizes and custom shape can be made on request.

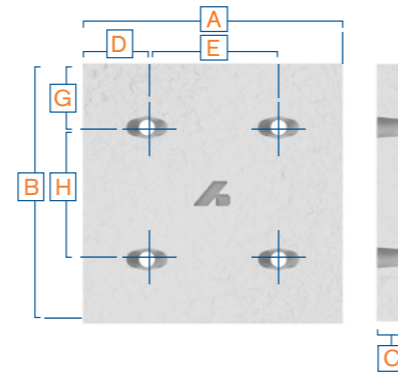
Liners can be cut to size on request.

Liner bolts are available on request.

Products with a mass over 25kg we recommend two person or mechanical lifting.

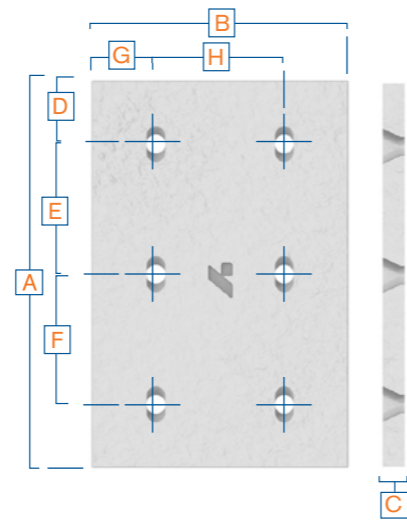
Cast holes to suit M16 oval headed liner bolts.

Part No.	Ref No.	Dimensions (mm)								Mass (Kg)
		A	B	C	D	E	G	H		
NH300X300X25-2H	BKD1160	298	298	25	149	-	74	150	17	
NH300X150X25-2H	BKD1177	148	298	25	74	-	74	150	9	
D04113		395	395	32	72.5	250	72.5	250	39	
BKD1054ITM1	BKD1054-01	300	300	32	74	152	74	152	23	
BKD1054ITM2	BKD1054-02	300	150	32	74	152	75	-	11	



Cast holes to suit M20 oval headed liner bolts.

Part No.	Ref No.	Dimensions (mm)								Mass (Kg)
		A	B	C	D	E	F	G	H	
D03779	L1	296	296	20	73	150	-	73	150	14
D03786	L2	196	296	20	98	-	-	73	150	9
D03787	L3	146	296	20	73	-	-	73	150	7
D03792	L5	96	296	20	48	-	-	73	150	5
D03798	L6	96	196	20	48	-	-	60.5	75	3
D013134		296	296	20	73	150	-	148	-	14
D013135		296	350	20	73	150	-	50	-	17
BKD-1193	BKD1193	148	298	25	74	-	-	74	150	9
BKD-1194	BKD1194	223	298	25	111.5	-	-	74	150	13
BKD-1195	BKD1195	298	298	25	149	-	-	74	150	17
D04064	N1	146	296	32	73	-	-	73	150	11
D04065	N2	196	296	32	98	-	-	73	150	15
D04066	N3	296	296	32	73	150	-	73	150	22
D04068	N5	96	296	32	48	-	-	73	150	7
D04069	N6	96	196	32	48	-	-	60.5	75	5
H02547		750	610	32	102.5	545	-	102.5	405	115
H02585		750	395	32	102.5	545	-	102.5	190	75
D02418		303	73	32	49	102.5	102.5	36.5	-	6
D02521		303	98	32	49	102.5	102.5	49	-	8
D02398	MK-2	300	300	32	74	152	-	150	-	23
D05758	S1A	452	300	32	74	152	152	74	152	35
D04793	S6A	300	300	32	74	152	-	74	152	23
S97-2		300	148	32	74	152	-	74	-	11
D012895	ML3	300	300	32	74	152	-	74	152	23
D012896	ML1	300	148	32	74	152	-	74	-	11

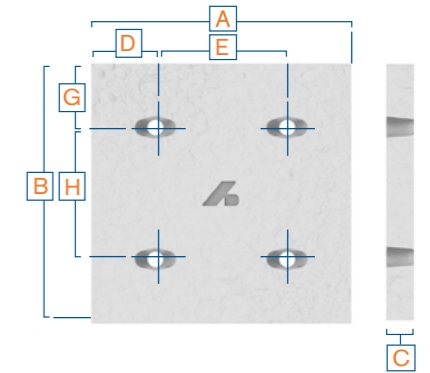


Duracast® N460 Liners

Products with a mass over 25kg we recommend two person or mechanical lifting.

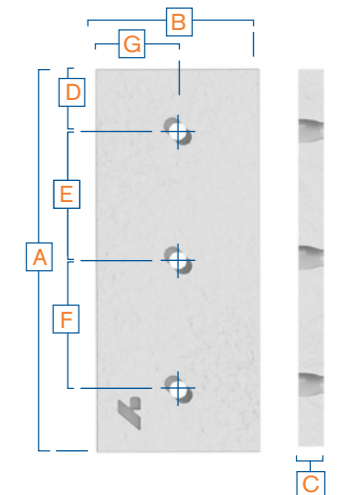
Cast holes to suit M22 oval headed liner bolts.

Part No.	Ref No.	Dimensions (mm)								Mass (kg)
		A	B	C	D	E	G	H		
L001-001	L1	444	444	32	70	304	70	304	50	
D00244S	L3	444	292	32	70	304	70	152	33	
D00249	L4	444	140	32	70	304	70	-	16	
D00240	L18	292	292	32	70	152	70	152	22	
D00250	L6	292	140	32	70	152	70	-	10	
D00243S	L2	216	444	32	70		70	304	24	
D01774	L3W	452	300	32	74	304	74	152	34	
D01775	L4W	452	148	32	74	304	74	-	17	
D01777	L18W	300	300	32	74	152	74	152	23	
D01776	L6W	300	148	32	74	152	74	-	11	
D02324	L2W	224	452	32	74		74	304	25	



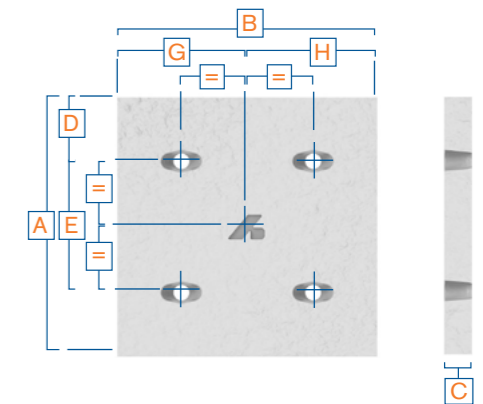
Cast holes to suit M20 oval headed liner bolts.

Part No.	Ref No.	Dimensions (mm)								Mass (kg)
		A	B	C	D	E	F	G		
D00379	S4	452	72	32	112	228	-	36	9	
H00519	S9	544	148	32	135	274	-	74	21	
D00362	S11	480	72	32	119	242	-	36	9	
D00365	S14	264	148	32	65	134	-	74	10	
D00366	S15	388	84	32	96	196	-	42	9	
D00369	S18	300	110	32	74	152	-	55	9	
D00370	S19	328	186	32	81	83	83	93	16	
H00511	S20	632	186	32	104	212	212	93	30	
D00371	S21	484	206	32	79	163	163	103	26	
D00372	S22	364	116	32	90	184	-	58	11	
D00520S	S96	300	300	32	74	152	-	150	23	
D00384S	S97	300	148	32	74	152	-	112	11	
D00385	S98	300	224	32	74	152	-	112	17	
D00386	S99	452	300	32	112	228	-	150	34	
D00360	S101	452	148	32	112	228	-	74	17	



Cast holes to suit M20 oval headed liner bolts.

Part No.	Ref No.	Dimensions (mm)								Mass (kg)
		A	B	C	D	E	G	H		
D00358	S1	452	300	32	112	228	74	152	35	
D00381S	S6	300	300	32	74	152	74	152	23	
D00518	S7	404	300	32	100	204	74	152	32	
D00363	S12	452	264	32	112	228	65	134	30	
D00509	S13	376	264	32	93	190	65	134	25	
D00367	S16	388	300	32	96	196	74	152	30	
H02481	S100	544	300	32	135	274	74	152	41	



Duracast® N460 Billets

Other sizes can be made on request.

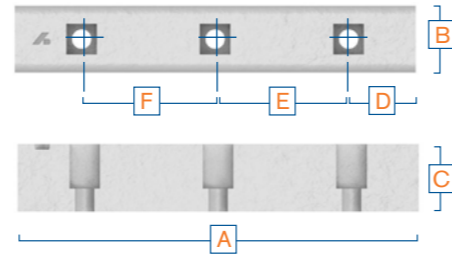
Liners can be cut to size on request.

Bolts available on request.

Products with a mass over 25kg we recommend two person or mechanical lifting.

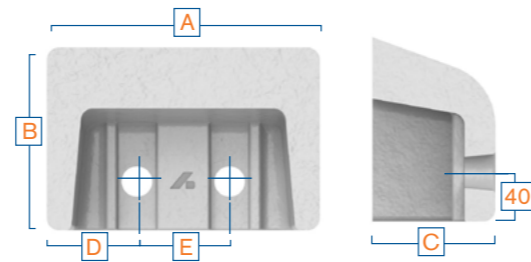
Bolt Type: AS1110.1 M20 Hex Head.

Part No.	Ref No.	Dimensions (mm)						Mass (kg)
		A	B	C	D	E	F	
D00927S	12" Billet	305	76	76	76.5	152	-	13
D00926S	18" Billet	457					152	



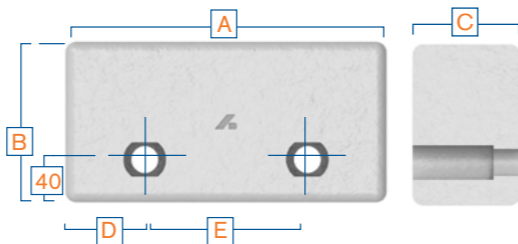
Bolt Type: AS1110.1 M20 Hex Head.

Part No.	Ref No.	Dimensions (mm)					Mass (kg)
		A	B	C	D	E	
HB224	DW3012S	224	150	100	74	76	14
HB300	DW3011S	300				152	



Bolt Type: AS1110.1 M20 Hex Head.

Part Number	Ref Number	Dimensions (mm)					Mass (kg)
		A	B	C	D	E	
B300	DW2874S	300	150	100	74	152	33
B224	DW2875S	224					
B185	BKD4335	185			55	21	
B146	D01771	146			76		17
B70	D01770	70			35	-	



Duracast® N460 Billets

Liners can be cut to size on request.

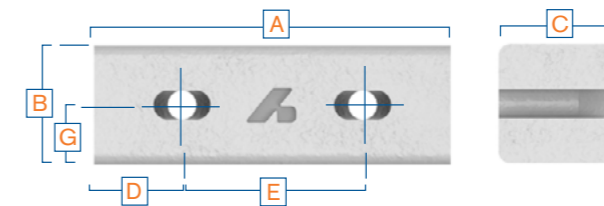
Other sizes can be made on request.

Bolts available on request.

Products with a mass over 25kg we recommend two person or mechanical lifting.

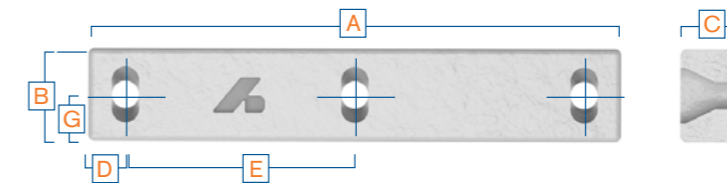
Cast holes to suit M22 oval headed liner bolt.

Part No.	Ref No.	Type	Dimensions (mm)						Weight (kg)
			A	B	C	D	E	G	
WB1	WB1	1	302	100	100	75	152	50	22
WB2	D03536		454				304		34



Cast holes to suit M20 oval headed liner bolt.

Part No.	Ref No.	Type	Dimensions (mm)					Weight (kg)	
			A	B	C	D	E		
DW2971S	B128	1	128	75	50	30	68	37.5	3
DW2972S	B210		210				150		6
DW2973S	B432		432				186		12



Duracast® N460 Skirtliners

Liners can be cut to size on request.

Other sizes can be made on request.

Bolts available on request.

Products with a mass over 25kg we recommend two person or mechanical lifting.

Cast holes to suit oval headed liner bolt.

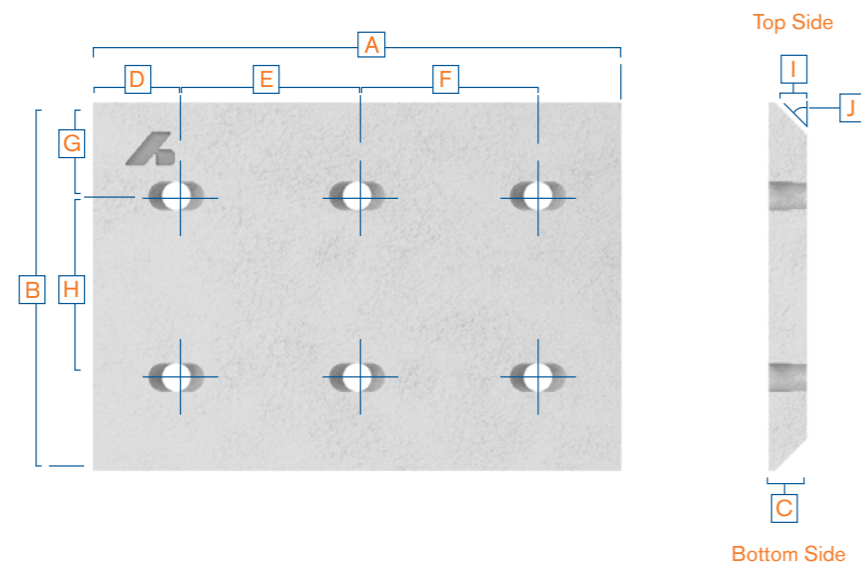
Part No.	Ref No.	Bolt Type	Dimension (mm)										Mass (kg)
			A	B	C	D	E	F	G	H	I	J ^o	
D03775		M16	495	220	32	122.5	250	-	110	-	25	55 T	26
D04078	L1S	M20	296	296	20	73	150	-	73	150	20	45 T	13
D06369	S6C	M20	300	364	32	74	152	-	106	152	27	45 T	23
D01608	S96C	M20	300	364	32	74	152	-	182	-	27	45 T	24
D09819	S96Cm-2	M20	300	225	32	74	152	-	43	-	27	45 B	17
D01324	S98C	M20	300	288	32	74	152	-	144	-	27	45 T	17
D04067	N4	M20	296	296	32	73	150	-	73	150	32	45 TW	20
D03307		M22	496	260	25	123	250	-	130	-	12.5	45 T	25
D04646	450S	M22	444	309	32	72	150	150	154.5	-	27	45 T	34
D02872	SL1W	M22	452	296	32	74	304	-	74	-	16	45 B	33
D06202	SL18W	M22	300	300	32	74	152	-	60	-	16	45 B	22
D012961	SL3W	M22	300	224	32	74	152	-	60	-	16	45 B	17

Chamfer location -

B indicates bottom side.

T indicates both top and bottom sides.

W indicates chamfer is on the wear surface.



Duracast® N460 Lip Liners

Cast holes to suit liner bolts M22.

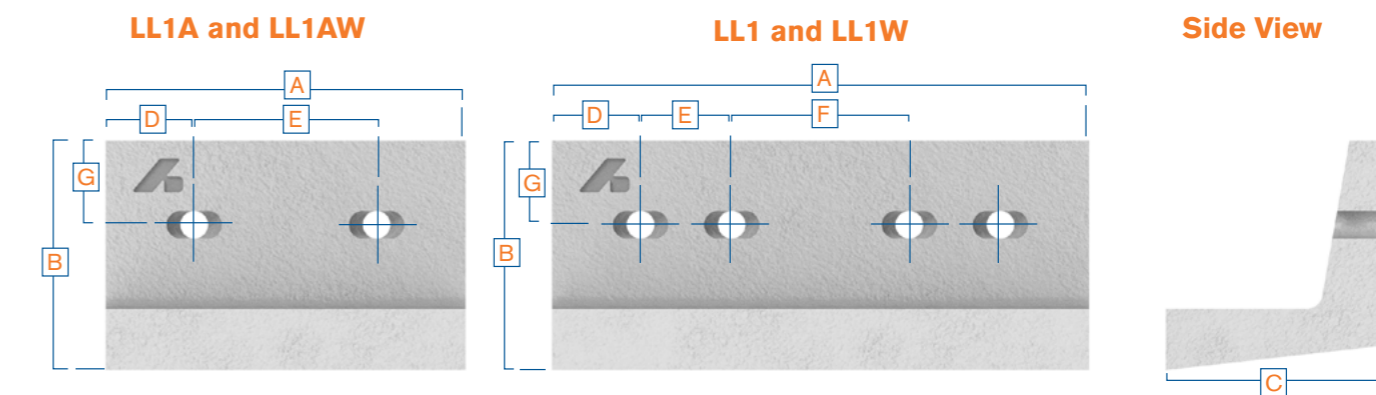
Liners can be cut to size on request.

Other sizes can be made on request.

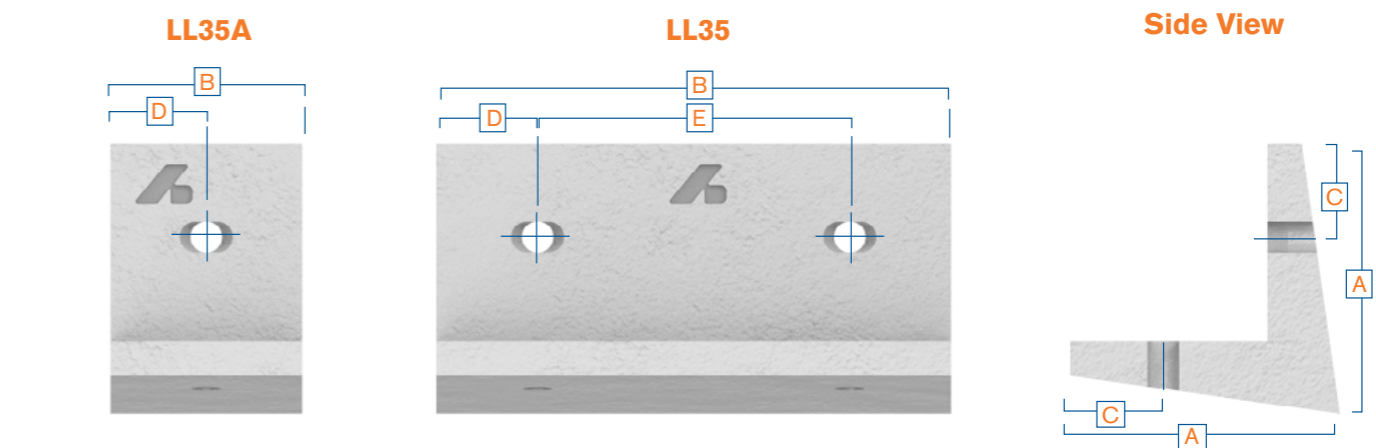
Bolts available on request.

Products with a mass over 25kg we recommend two person or mechanical lifting.

Part No.	Ref No.	Dimensions (mm)							Mass (kg)
		A	B	C	D	E	F	G	
H03075	LL1A	304	191	178	76	152	-	71	30
H01779	LL1AW	312			80	152	-		30
H03074	LL1	444			70	76	152		44
H01778	LL1W	452			74	76	152		45



Part No.	Ref No.	Dimensions (mm)					Mass (kg)
		A	B	C	D	E	
H02346	LL35	197	444	70	70	304	48.3
H01446	LL35A		140			-	15.3



Duracast® DC17 Skirtliners

Liners can be cut to size on request.

Other sizes can be made on request.

Bolts available on request.

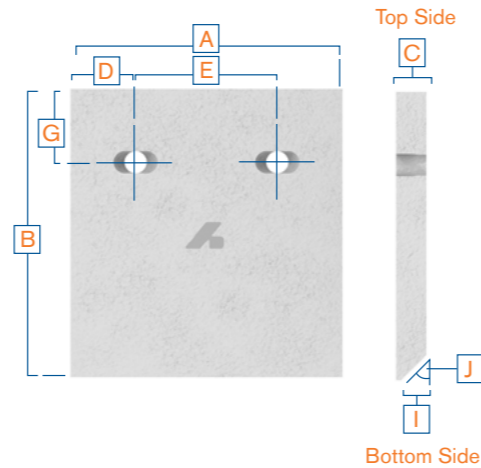
Products with a mass over 25kg we recommend two person or mechanical lifting.

Cast holes to suit M22 oval headed liner bolt.

Part No.	Ref No.	Dimensions (mm)								Mass (kg)
		A	B	C	D	E	G	I	J°	
D02870	SL1CrMO	444	292	32	70	304	70	16	45 B	32
D02873S	SL1WCrMO	452	296	32	74	304	74	16	45 B	33
SL18WCMI	SL18WCrMO	300	300	32	74	152	60	16	45 B	22
SL3WCMI	SL3WCrMO	300	224	32	74	152	60	16	45 B	17

Chamfer location -

B indicates bottom side.



Duracast® DC17 Liners

Liners can be cut to size on request.

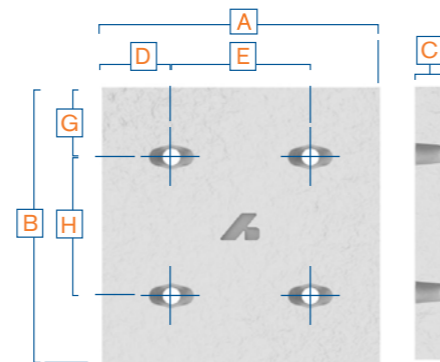
Other sizes can be made on request.

Bolts available on request.

Products with a mass over 25kg we recommend two person or mechanical lifting.

Cast holes to suit M22 oval headed liner bolt.

Part No.	Ref No.	Dimensions (mm)							Mass (kg)
		A	B	C	D	E	G	H	
D01820	L3CrMO	444	292	32	70	304	70	152	33
D02785	L4CrMO	444	140	32	70	304	70	-	16
D01969	L18CrMO	292	292	32	70	152	70	152	22
D02786	L6CrMO	292	140	32	70	152	70	-	10
D02784	L2CrMO	444	216	32	70	304	70	-	24
D02105	L3WCrMO	452	300	32	74	304	74	152	34
D02106	L4WCrMO	452	148	32	74	304	74	-	17
D02108	L18WCrMO	300	300	32	74	152	74	152	23
D02107	L6WCrMO	300	148	32	74	152	74	-	11
D02083	L2WCrMO	452	224	32	74	304	74	-	26

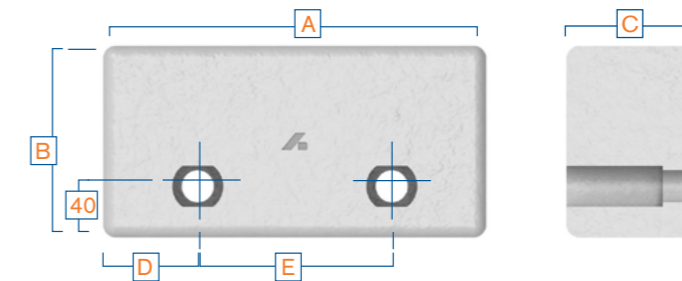


Duracast® DC17 Billets

Products with a mass over 25kg we recommend two person or mechanical lifting.

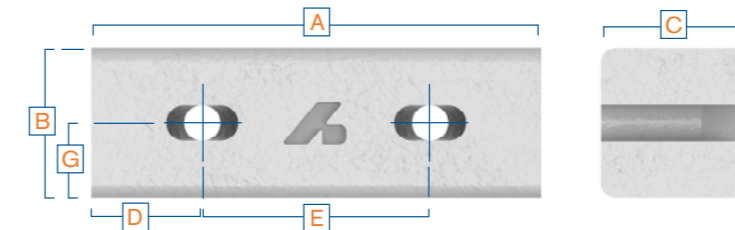
Bolt Type: AS1110.0 M20 Hex Head.

Part No.	Total Thickness (mm)	Useable Thickness (mm)	Dimensions (mm)					Mass (kg)
			A	B	C	D	E	
B300-DC17	100	80	299	150	100	74	152	33.3
B224-DC17			224				76	



Cast holes to suit M22 oval headed liner bolt.

Part No.	Dimensions (mm)						Mass (kg)
	A	B	C	D	E	G	
WB1-DC17	302	100	100	75	152	50	22
WB2-DC17	454				304		34



Duracast® DC27 Billets

Liners can be cut to size on request.

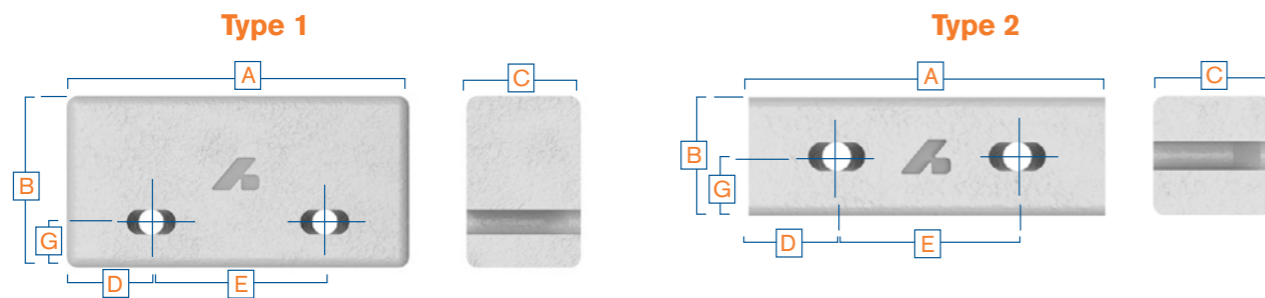
Other sizes can be made on request.

Bolts available on request.

Products with a mass over 25kg we recommend two person or mechanical lifting.

Cast holes to suit M20 oval headed liner bolt.

Part No.	Ref No.	Type	Dimensions (mm)						Mass (kg)
			A	B	C	D	E	G	
D02292	-	1	275	150	100	66	143	40	32
D0294S	EBL9		238			59	120		28
D03189S	EBL12	2	340	75	75	70	200	37.5	15
D0293S	EBL8		292			72	148		13
D02568S	EBL11		200			50	100		9
D03296S	EBL10		150			40	70		7

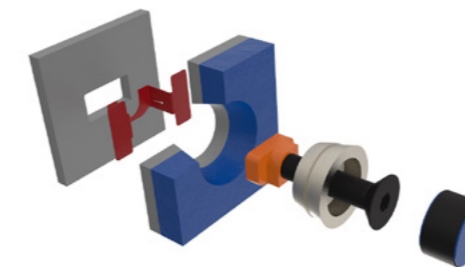


ChuteSafe™ Liner Bolts

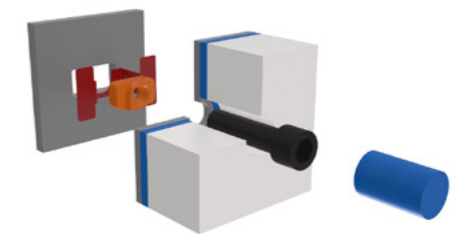
Safer, Faster and Easier.

- ✓ One-sided Installations & removal
- ✓ Easy to use with no specialised equipment or tooling required
- ✓ Suits all Bradken Liner Materials
- ✓ Reduced task labour requirements
- ✓ Improved liner changeout safety

Bradken's Patented One-Sided Liner Attachment Solution is now available. ChuteSafe™ allows for fastening of liners from the wear side of bulk materials handling assets only - no external access is required. This reduces labor requirements during liner changeout, eliminates external scaffolding requirements and improves liner changeout safety by limiting working at heights and hotworks for fastener removal. Chutesafe is Ideal for areas where there is no physical access to the outside of the equipment or where extensive scaffold would be required.



Duaplate® Liners and ChuteSafe™ Bolt



Ceramic Liners and ChuteSafe™ Bolt

Liner Bolts

Please contact your local sales office for pricing and availability.

Ref No.	Product Description
S013054	M16x75 Oval Headed Liner Bolt/ Nyloc Nut Flat Washer
S03777	M16x75 Oval Headed Liner Bolt/ Hex Nut Flat Washer
S05841	M20x75 Oval Headed Liner Bolt/Nyloc Nut Flat Washer
S011097	M20x75 Oval Headed Liner Bolt Only
S013180	M20x75 Hex Bolt/ Nyloc Nut Flat Washer
S013136	M20x90 Oval Headed Liner Bolt/Nyloc Nut Flat Washer
S011098	M20x100 Oval Headed Liner Bolt Only
S06344	M22x75 Oval Headed Liner Bolt/Nyloc Nut Flat Washer
S06345	M22x95 Oval Headed Liner Bolt/Nyloc Nut Flat Washer

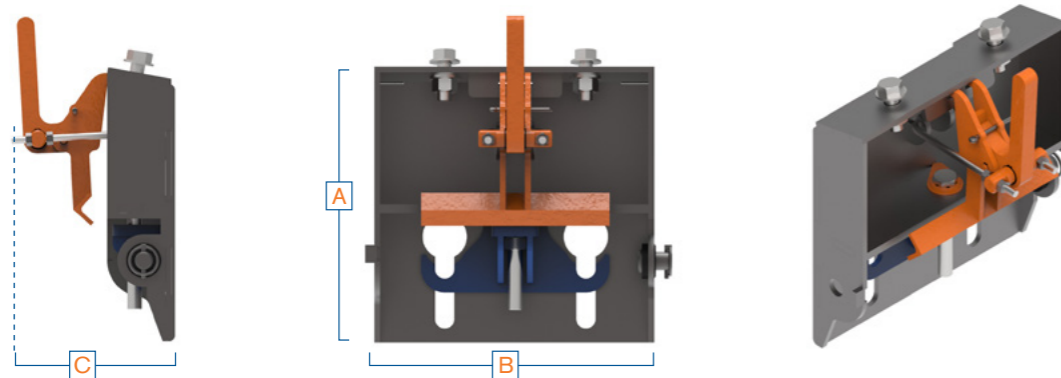


Revolver® Skirtliner System

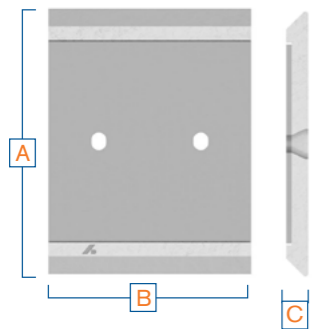
Epoxies

Part No.	Dimensions (mm)			Description	Mass (kg)
	A	B	C		
BKD1857-1	297	304	170	Metric Frame	11.3
RSL-368X300X32-NH4	368	300	32	Duracast N460 Liner	22.1
BD364X300X32D70STD2	364		32	Duablock Liner	25.1
RSL-368X300X42-DB	368		42	HD Duablock Liner	25.3

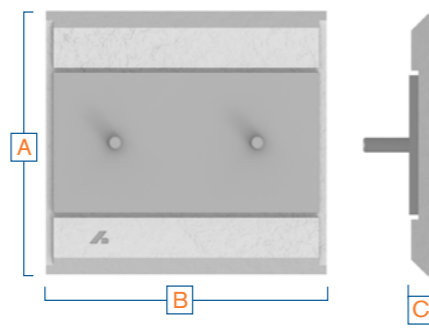
BKD1857-1



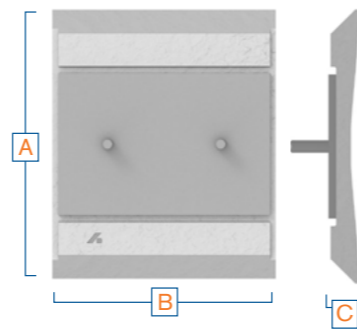
RSL-368X300X32-NH4



BD364X300X32D70STD2

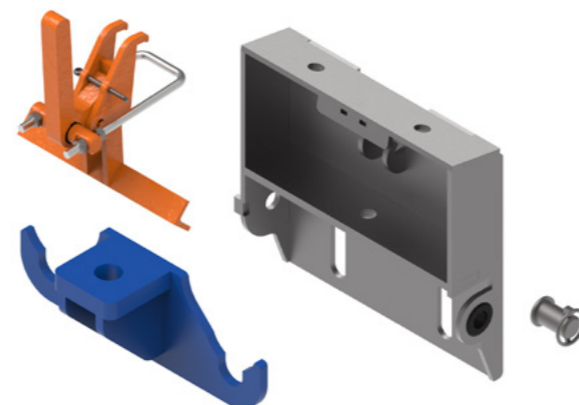


RSL-368X300X42-DB



Spare Parts List

Part No.	Description
BKD1857-MF	Mainframe
BKD1857-SC	Skirt Clamp
BKD1857-HA	Height Adjuster
BKD1857-MET	Metric Fasteners
BKD1857-6-12	Frame Pin



A complementary product which can be used for emergency repairs, gap filling or transition blending.

We offer different grades for different applications so whether it's for a small gap or an ad-hock fast cure fix in a high wear area we will have the right product for you. Each grade of epoxy comes with a variety of ceramic particles giving exceptional wear characteristics.



BK Wear105

Ceramic filled putty compound for application in voids >5mm and for medium impact & sliding abrasion. Ideal as grout between and under wear liners.



BK Fast605QS

Fast cure version of the BK Wear105, ideal as an emergency repair compound and for builds greater than 3mm such as chute corners and liner grout.



BK Impact519

Impact resistant epoxy compound that has a fibre reinforcement to improve impact performance. Ideal for builds greater than 5mm such as wearing compound, corners of chutes and grout.

Part Number	Epoxy	Kit Size	Pot Life (25°C)	Cure Time (25°C)	Ultimate Cure time (25°C)
BK105-3KG	BK Wear105	3 Kg	40 mins	4 hours	12 hours
BK105-7KG		7 Kg			
BK519-7KG	BK Impact519	7 Kg	25 mins	6 hours	
BK519-14KG		14 Kg			
BK605-3KG	BK Fast605QS	3 Kg	15 mins	1 hours	
BK605-10KG		10 Kg			

Contact Bradken globally to find a solution for your business.



Our Innovation. Your Advantage.

BK Sales & Marketing Global Record Brochure Fixed Plant Catalogue-English- REV 3 (20/04/2023)
©Bradken 2023



BRADKEN

bradken.com