

# Mill Solutions



Bradken's mill liner range provides improved safety solutions for product handling and installation. Our solutions are supported by performance monitoring and reporting utilising local customer service support. This enables our customers to extract the best performance and the most value from their equipment.

## Grinding Mill Solutions



Bradken is a leading grinding mill solutions provider, supported by design and manufacture of high-quality mill liner components to suit AG/SAG, Ball and Rod Mills. By utilising the latest technologies, we provide customers with advanced Mill Liner Solutions and products that improve mill performance, safety and availability.

## Vertical Mill Solutions



Bradken Vertical Grinding Mill Liners are specifically designed to suit your OEM equipment. Bradken can also customise the design of the Vertical Grinding Mill wear components to further increase performance and wear life to suit your operating conditions.



**Our Innovation. Your Advantage.**

BK Sales & Marketing Global Record Flyer Mill Liner Solutions Overview BRADKEN© REV0 07/03/2023  
All company names, logos, and identifying marks used throughout this publication are the property of their respective trademark owners, they are used for descriptive purposes only.



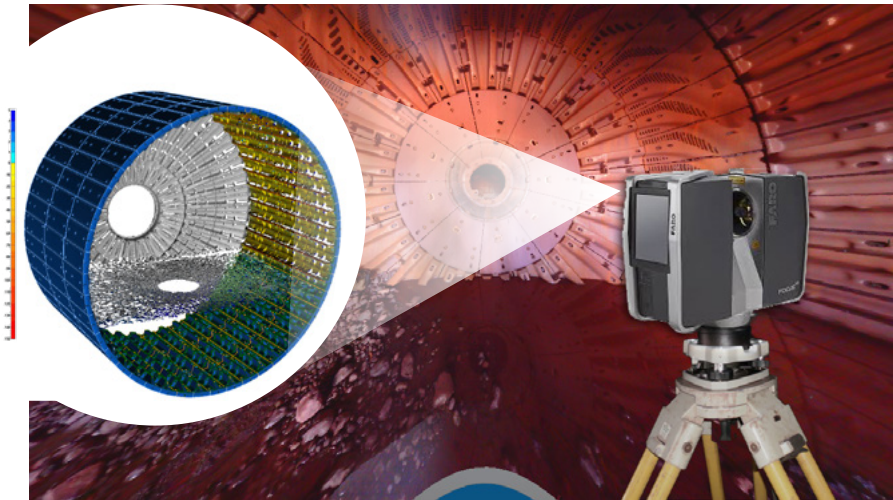
# Vision Insight®

## 3D Laser Wear Monitoring & Reporting

Bradken's highly skilled team embraces new technology that helps provide our customers with world-class services.

Bradken's Vision Insight helps our customers achieve the maximum liner life expectancy through detailed monitoring and reporting including:

- Technical on-site presence
- Confined space safety
- Fast data capture
- Liner wear profiling
- Mill charge volume analysis
- Liner life predictions
- Product enhancement
- Continual improvement
- Mill performance monitoring
- Maximising wear consumables



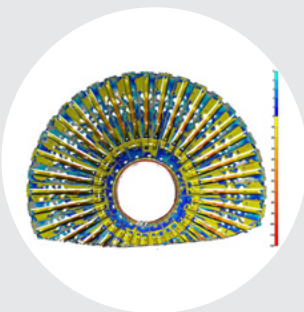
## Deliverables:

### Dashboard Monitoring

Dashboard monitoring for accurate data collection on individual liners.

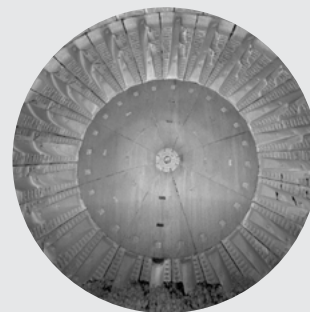
### 3. PART PERFORMANCE DASHBOARDS

FEED END - Throat Liner			BK32723A	Rev 2
Description	Plate	Lifter		
Installed Date	1/09/2015			
No of days in Service	630			
Installed Size	54	144		
Change-Out Size	35	35		
Minimum Measurement	49	118		
Material Remaining	14	83		
Milled Tonnes	5,630,856			
Wear Rate (mm/Day)	0.01	0.04		
Wear Rate (mm/Million Tonnes)	0.89	4.62		
Approx. Life Remaining (Days)	1764	2011		
Projected Total Tonnes (Million Tonnes)	21.40	23.61		



### Detailed Information

Detailed Information for part, liner life predictions, wear data capture, days and tonnes milled.



### 3D Wear Profiling

3D wear profiling for accurate 3D DEM modelling to improve mill performance.



**Our Innovation. Your Advantage.**

