

# Face Shovel Bucket to suit Hitachi mining class machines

DRAFT

Bradken's Face Shovel Buckets offer increased machine availability and optimized productivity with superior structural integrity and durability.

Bradken's Face Shovels (Loader Buckets) are engineered using the latest software simulation tools, and align with Bradken's GET cast and plate lip systems to achieve optimized performance in a range of applications. OEM compatibility ensures efficient install meaning less downtime.

## Large capacities to meet your demands:

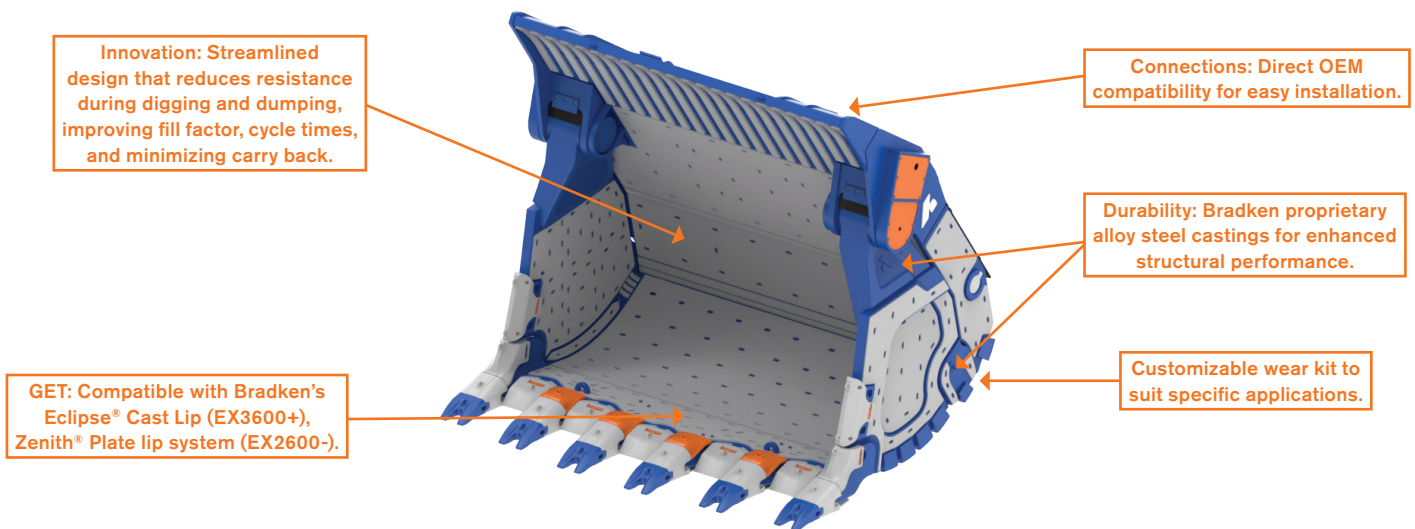
Our standard offering provides bucket sizes ranging from 6 m<sup>3</sup> to >43 m<sup>3</sup> (7.8 yd<sup>3</sup> to >56 yd<sup>3</sup>) capacities, while our customized range caters to the unique production and maintenance requirements of your specific site.



## Face Shovels (Loader) Range

EX1200	EX2000	EX2600	EX3600	EX5600	EX8000
6-7 m <sup>3</sup>	11-15 m <sup>3</sup>	15-17 m <sup>3</sup>	21-23 m <sup>3</sup>	22-32 m <sup>3</sup>	38-43 m <sup>3</sup>

Bradken designs and engineers complete bucket solutions with a focus on critical deliverable areas:



Our Innovation. Your Advantage.





### Features

Wide range of sizes up to 43 m<sup>3</sup> for greater capacity.

Strategic use of solid steel castings to enhance durability.

Compatible with OEM hitch points for simple maintenance and hook-up.

Load distribution skeleton for increased strength and lower maintenance costs.

Optimized bucket capacities for high fill factors and increased production.



### Advantages

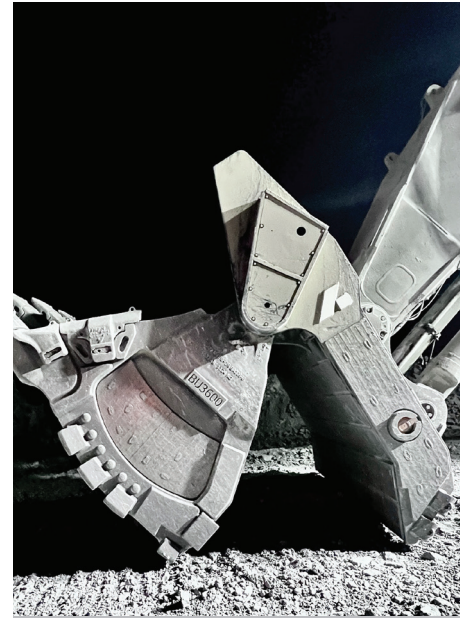
Designed using latest in simulation software.

Greater durability for longer service life.

Higher production rates and output.

Improved load distribution for greater stability.

Higher fill factors for maximum efficiency.



### Benefits

Lowered maintenance costs.

Minimal downtime for more productivity and throughput.

Reduced maintenance needs for long-term savings.

Improved safety for personnel and equipment.

Optimized bucket capacities for specific site requirements.

Enhanced equipment performance for superior results.

## After Sales Support

- Condition monitoring and reporting.
- Life-cycle management planning support.
- Standard part reorder – Refurbishment parts.
- Responsive engineering assistance.



**Our Innovation. Your Advantage.**

Bradken Face Shovel bucket flyer - REV0 May 2024 BRADKEN© 2024 All company names, logos, and identifying marks used throughout this publication are the property of their respective trademark owners, they are used for descriptive purposes only.

