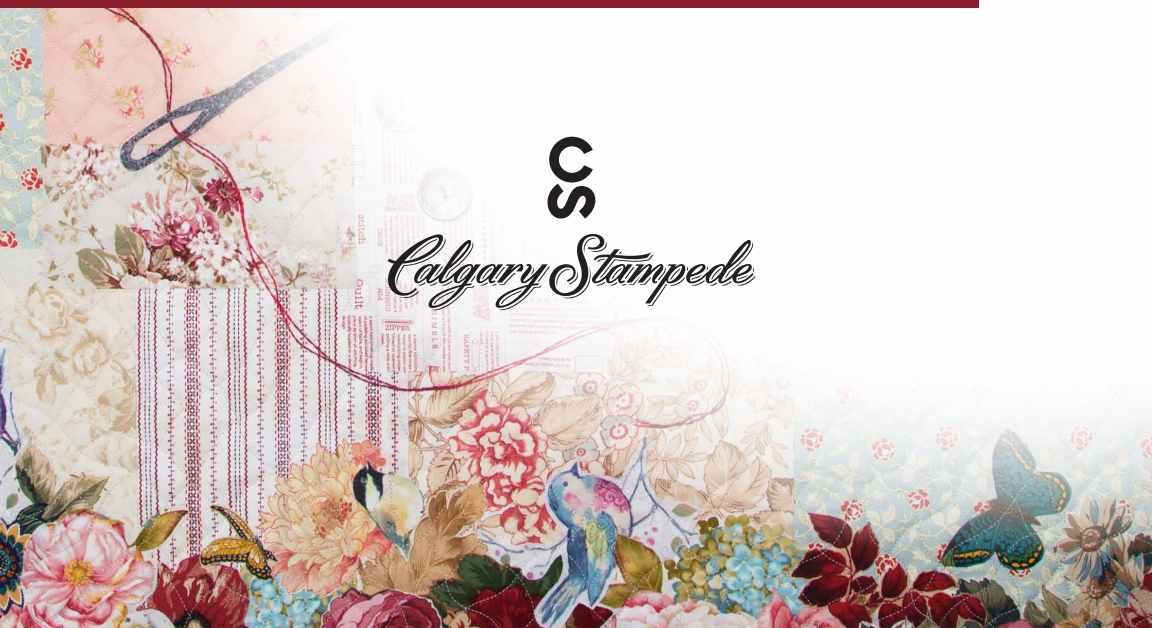




2021

CREATIVE ARTS AND CRAFTS EXHIBITION



CS

Calgary Stampede



INQUIRIES:

artsncraftscalgary@gmail.com

REGISTER BY:

Thursday, June 10th, 2021

ONLINE:

www.calgarystampede.com/western-oasis/art-show

MAIL:

Calgary Stampede
Creative Arts & Crafts Exhibition,
Western Showcase
Box 1060, Station M
Calgary, AB T2P 2K8

Cover Art: Deborah Spearing

HISTORY

The Creative Arts and Crafts Committee has its origins in the Women's World displays of the 1970s.

The intent was to commemorate the original Exhibition component of what was then the Calgary Exhibition and Stampede. The Creative Arts and Crafts competition was conceived to ensure the talent, craftsmanship, and artistry of participants in early Stampedes would be preserved and advanced.

Today, the Creative Arts and Crafts Committee is comprised of a group of volunteers who work year-round to encourage creativity in arts and crafts through competition, exhibitions, and demonstrations. In this way we strive to forge a link between the Calgary Stampede and the community. Together with approximately two hundred other volunteers on the Western Showcase Committee, we create our display as a component of the Western Oasis for guests to enjoy.

CREATIVE ARTS AND CRAFTS CHAIR'S COMMENTS

Welcome to Stampede 2021!

The Creative Arts and Crafts Committee is thrilled to host the creative Arts and Crafts Exhibition. We missed you in 2020 and look forward to enjoying some of the wonderful handicrafts created during the past year as well as the pieces that you had ready to display in the Stampede 2021 Arts and Crafts Competition.

Due to shortened timelines for 2021, we will be hosting an Exhibition of creative work rather than a competition. It is a wonderful opportunity to display the handicrafts that you have created over the past two years. Please review this booklet in detail to familiarize yourself with our various sections and the applicable regulations.

We are excited to have "Country Christmas" as our theme this year. I think we can all agree that it will be fun to celebrate Christmas in July!

Our display space will be limited this year, therefore please submit your registrations early as we may be required to close off registrations earlier than the June 10th, 2021 deadline.

We look forward to seeing you and your work!

Jennifer Scott

GUILDS

Guilds were originally created in Medieval England when craftsmen gathered to aid each other, protect themselves, and set standards for their crafts.

Our modern-day guilds have evolved from this beginning and we can see remnants of the original purpose in them. Today some of their goals are to teach and develop the craft, to raise awareness and promote interest in their craft, support each other, share ideas and of course enjoy friendship.

We have many guilds in Calgary and surrounding areas which are comprised of people who share a love of the same type of craftsmanship or artistry. Indeed, a number of guild members are active participants in the Creative Arts and Crafts Competition every year at the Calgary Stampede.

Usually, the Creative Arts and Crafts Committee hosts different guilds in the Western Oasis during the Calgary Stampede. The guild members share their enthusiasm and skills during their visit and are happy to answer any questions about their craft and guild. Because of the pandemic, the guilds will not be participating in person this year. We look forward to them joining us in 2022.

For those who are interested in joining a guild, many of the guilds have websites and Facebook pages.



Jennie Wolter

GINA BROWN AWARD

Gina Brown was well-known in the Calgary craft community. She was involved with the Calgary Stampede Handicrafts as a judge in the early 1960s and later joined the Handicraft Committee in the 1980s. She served as a volunteer on the Committee until her passing in August 1996. Gina will always be remembered for her boundless energy and her vast technical expertise. The Creative Arts & Crafts Committee thanks Gina Brown's family for continuing to make this award possible in loving memory of Gina.

The Gina Brown Needle Arts Award is open to a competitor entering the Knit and Crochet or Needlework and Stitchery Sections. **The Gina Brown Award will not be presented in 2021 because the entries are for exhibition only, but it will be awarded in the 2022 competition.**

The winner is chosen by members of the Creative Arts and Crafts Committee and is awarded a commemorative piece.





Here is the art of a 'future' competitor named
Madeleine Bouma

The Second Place Section winner will receive a Section ribbon and \$150.
The Third Place Section winner will receive a Section ribbon and \$125.

COMING IN 2022—FUTURE COMPETITOR OPPORTUNITY

We look forward to showcasing the work of children under the age of 12 during Stampede 2022. Look for details in next year's competition booklet.

WALL OF CHAMPIONS

The Creative Arts and Crafts Committee of the Western Showcase is pleased to present the 'Wall of Champions' in honour of outstanding work done by participants.

The 'Wall of Champions' will be open to any participant who receives a First in the same Section for four years. The years do not have to be consecutive.

The year after their fourth section win, the participant will be inducted into the Creative Arts and Crafts 'Wall of Champions'. A championship ribbon and trophy will be awarded and their picture taken. This photograph will hang yearly on the 'Wall of Champions' beginning the year after their fourth win.

Once inducted into the 'Wall of Champions' a participant will no longer be eligible to compete in that Section. Instead, they will receive an invitation to display one article related to that Section. This entry will be subject to all current rules and regulations.



Jim Little

The Wall of Champions began with the 2011 Stampede. Congratulations to all Section Winners!

2021 CHARITY – ROWAN HOUSE

Artisans are welcome to donate new, useful handcrafted articles for adults and children such as quilts, afghans, sweaters, or household items for charity. These items may be displayed but will not be judged. There is no entry fee for charitable donation items.

Our 2021 charity is Rowan House Emergency Shelter, which provides shelter and support to at-risk women and their families. Your lovingly handcrafted donations are greatly appreciated by the recipients.

The Creative Arts and Crafts Committee is proud to support local charitable organizations with your donations. We encourage you to enter a special article to donate to this worthy cause. Although we appreciate your offer, we are unable to accept any framed pictures or calligraphy.

SECTION ENTRY FOR 2021 CHARITY

9999 - Charity Section

~~Entry fees have been waived in this Section.~~ You may enter up to five items into the



Oxana Lyashenko



2021 CREATIVE ARTS AND CRAFTS EXHIBITION SECTIONS



CAKE DECORATING AND SUGAR ART

Cake decorating started during the 17th century in Europe. It is a sugar art using icing or frosting and other edible decorative items to make plain cakes visually interesting. Cakes can be molded and sculpted to resemble three dimensional objects, places or people.

1000 Novelty cakes

1100 Sugar art



Monika Salkauska

1200 Tiered cakes

DECORATIVE HANDMADE ART

Decorative Handmade Art describes objects that are created by hand for a purely decorative use.

2000 Beading

2100 Ceramics, Glass or Pottery

2200 Fibre, Fabric or Leather

2300 Metal

2400 Paper

2500 Rugs

2600 Toys

2700 Weaving



Julia Loney

2800 Wood

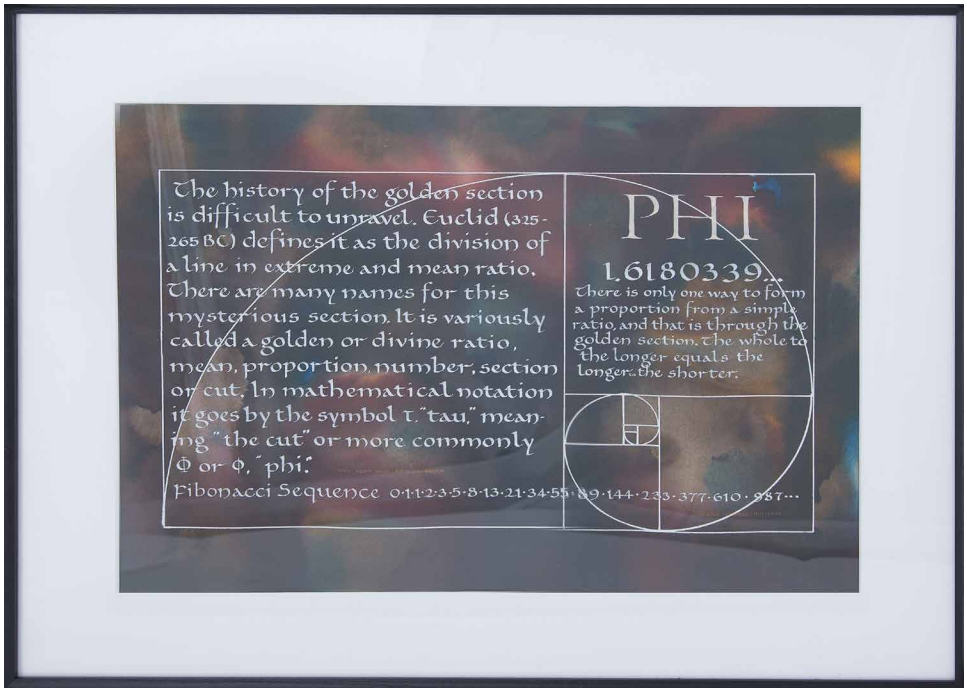
DRAWING

Drawing is a visual art using various drawing instruments to mark paper or another two dimensional medium such as cardboard, leather, canvas or board. Calligraphy is a drawing art, using pen or brush to produce decorative handwriting or lettering.

3000 Calligraphy

3100 Charcoal, graphite, or pencil

3200 Pen, ink, or scratchboard



George Huitema

3300 Pencil crayons, wax crayons, or pastels

FUNCTIONAL HANDMADE ART

Functional Handmade Art describes objects that are created or crafted by hand or by using only simple tools for a specific purpose/use.

4000 Ceramics, Glass or Pottery

4100 Fibre, Fabric or Leather

4200 Metal

4300 Paper

4400 Rugs

4500 Toys

4600 Wearable items

4700 Weaving

4800 Wood



Lynne Coar Falks/Heritage Weavers

JUNIORS

Open to anyone 12 to 17 years of age.

Any 12 year olds wishing to enter online must have the form filled out by their parents or guardians. Alternately, they may print the form and mail it to the address listed in the book.

Please ensure that the participant's age is noted on the entry form. The Junior Section is to encourage young artisans; therefore, no group entries will be accepted.

Please refer to each section **RULES AND REGULATIONS** on **page 19** for submission guidelines, including size restrictions and display requirements.

5000 Cake and Sugar Art

5100 Decorative Handmade Art

5200 Drawing

5300 Functional Handmade Art

5400 Knit and crochet

5500 Needlework and stitchery

5600 Painting

5700 Quilts



Emily Kiddle

KNIT AND CROCHET

Knitting is a method of creating a textile or fabric by manipulating yarn using two or more needles. Needle sizes and stitch styles are used to achieve knitted fabrics with diverse properties.

Crocheting is a method of creating fabric by interlocking loops of yarn, thread or strands of other materials using a hook. Crochet is a French word meaning a small hook.

The difference between the two, other than the use of needles versus a hook, is that in crochet each stitch is completed before proceeding to the next, while knitting keeps a number of stitches open at one time.

6000 Fair Isle or intarsia - Home décor

6050 Fair Isle or intarsia - Wearable item

6100 Knitted lace - Home décor

6150 Knitted lace - Wearable item

6200 Textured stitches - Home décor

6250 Textured stitches - Wearable item

CROCHET OR TATTING

6300 Home décor

6350 Wearable item



Laurie Bullock

NEEDLEWORK AND STITCHERY

Needlework is the art of decorative sewing or embroidery using different needle types and threads. Needlepoint has its roots in Ancient Egypt, and is counted - thread embroidery where yarn is stitched through open weave canvas. (Cross-stitch is the oldest form of embroidery, using X-shaped stitches on an even-weave fabric.)

7000 Cross Stitch

7100 Embroidery

7200 Heirloom sewn garment

7300 Needlepoint / Petit Point

7400 Wearable item



Pat Longhurst

PAINTING

Painting is an art form that spans all cultures and we find examples of it from prehistoric times through to the present. Watercolour painting is a method using paints made of pigments suspended in a water based solution. Oil painting uses paints made of pigments suspended in various types of oils as the binder.

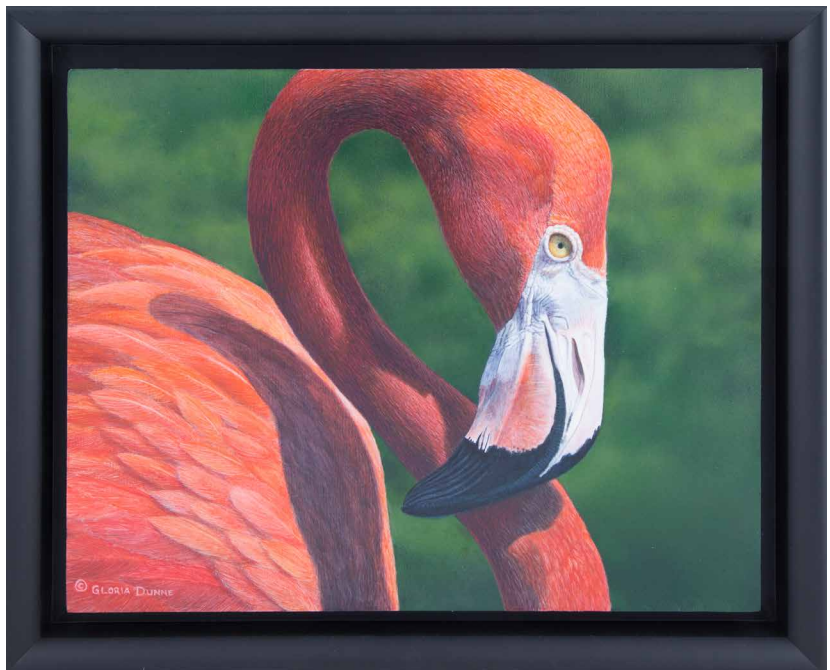
8000 Acrylic

8100 Oil

8200 Pastel

8300 Painted Home Decor - not canvas or paper

8400 Watercolour



Gloria Dunne

QUILTS

Quilts have three layers: a pieced top, a batting in the middle and a backing. Quilting is the process of sewing the three layers together using continuous stitching or evenly spaced knots.

Modern quilts are defined as those that include the use of bold colours and prints, high contrast and graphic areas of solid colour, improvisational piecing, minimalism, expansive negative space and alternate grid work.

HAND QUILTED

9000 Hand pieced and/or hand quilted. Judged on handwork only .

MACHINE QUILTED – TRADITIONAL QUILTS

9100 Home décor and Accessories

9200 Appliquéd – pieced and quilted by the entrant(s). Judged on piecing and quilting.

9250 Appliquéd – pieced by the entrant; quilted by a second person. Judged on piecing only.

9300 Paper-pieced – pieced and quilted by entrant(s). Judged on piecing and quilting.

9350 Paper-pieced - pieced by the entrant, quilted by a second person. Judged on piecing only.

9400 Pieced – pieced and quilted by the entrant(s). Judged on piecing and quilting.

9450 Pieced – pieced by the entrant; quilted by a second person. Judged on piecing only.

9500 Machine Quilted - Judged on quilting only and must be entered by the quilter.

ART QUILTS

9600 Art Quilts – representational or abstract.

MODERN QUILTS

9700 Modern Quilts – pieced and quilted by the entrant(s). Judged on piecing and quilting.

9750 Modern Quilts– pieced by the entrant, quilted by a second person. Judged on piecing only.



Roxanne Nelson

2021 CREATIVE ARTS AND CRAFTS THEME

COUNTRY CHRISTMAS

For 2021, the Theme Country Christmas has been selected. Entries in this Section should reflect this theme. They can be in any medium or format as described in the Creative Arts and Crafts Committee Sections.

Items must conform to Display Requirements as outlined in the Rules and Regulations

For Stampede 2021 the themed section will be for display only. There will be no ribbons or cash prizes awarded.

2021 Country Christmas - Junior and Adult

BIRDHOUSE THEME

2019 WINNER STEVE RASKO



RULES AND REGULATIONS

1. ALL ENTRIES FOR EXHIBITION MUST BE REGISTERED BY June 10, 2021. Entries can be registered online at www.calgarystampede.com/western-oasis/art-show or by mail with a description of the entry. The Creative Arts and Crafts Committee is hereinafter called 'The Committee'.
2. Entry fees for the Adult and Junior Exhibition are \$15 per entry.
Entry Fees and may be paid by:
 - credit card (if registering online). Confirmation receipt sent via email.
 - cheque (if mailed in advance) made out to Calgary Stampede
 - cash or cheque at Take-In on June 29 and June 30, 2021. We encourage payment in advance so as to limit the handling of cash during the pandemic.
 - no entry fee for the Charity Section.
3. Each exhibitor in the Adult and Junior is limited to TWO entries. All items should be completed within the 24 months prior to the Calgary Stampede 2021.
4. TAKE-IN OF ENTRIES for exhibition before Stampede is on Tuesday, June 29, 2021 (entries in Decorative & Functional Handmade Art, Drawing & Painting) and on Wednesday, June 30, 2021 (entries in Cake Decorating, Knit & Crochet, Needlework & Stitchery, Quilts, Juniors, Charity and Theme). The location and parking information will be confirmed closer to Stampede due to construction.
5. PICK-UP OF ARTICLES at end of Stampede on Tuesday, July 20, 2021 (10:00 am to 7:00 pm) The pickup location and parking information will be provided closer to Stampede due to construction.

Entries will only be returned to the owner unless the owner designates another person in writing. This authorization and the claim ticket provided during Take-in must be presented by the designated person. All entries will be signed in and out by The Committee. No entries can be removed until the Stampede is over. Any entries NOT picked up by 7:00 pm on July 20, 2021 will be donated to our designated charity. The Committee is unable to accept or return entries by mail.

6. Insurance is the responsibility of the participant. Under no circumstances shall the Calgary Stampede, its Directors, officers, employees or volunteers be held responsible for loss, damage or for articles not picked up. Every precaution is taken by The Committee to protect all entries when handling and displaying. While in our possession, articles are monitored by security personnel provided by the Calgary Stampede.

7. DISPLAY REQUIREMENTS - ALL ENTRIES

All entries will remain on display for the entire period of the Calgary Stampede.

Label "front" and "top" of entries so they can be displayed correctly. Notes detailing construction and any other pertinent information (i.e. materials used) can be entered under comments on the registration form.

CAKES:

NO REAL CAKES WILL BE ACCEPTED. All items in the cake categories must be made as if using a real cake.

All colourings used must be edible. Decorations should be edible.

Points will be deducted for store bought items, e.g. plastic ornaments, paper leaves, dried or silk flowers, ribbons, cake toppers, etc.

Wires on sugar flower sprays should not be inserted into the cake; use plastic picks.

Maximum height of 30".

BOARDS must be 1/4" stable board and must have a 'foot' so they do not sit flush on the table. Maximum board size 16"x16".

Support pillars and stands for sprays, etc. are allowed. Cakes with unbalanced or wobbly tiers will not be displayed.

Sculpted cakes must be able to be recreated with at least 50% real cake.

Please note: Chocolate, Chocolate melts, or butter cream will **NOT** be accepted.

DRAWING AND PAINTING:

All framed items will be displayed on pegboard walls. Therefore, they must be equipped for hanging as follows:

With picture wire for hanging.

The wire attached with screw eyes on wooden frames or proper d-rings on metal frames. Saw tooth hangers will not be accepted.

Finished size of picture including frame must not exceed 120" perimeter.

FUNCTIONAL AND DECORATIVE HANDMADE ART:

Entries must:

Fit within a depth of 22".

Not weigh more than 20 lbs.

Not be taller than 5 feet.

Framed entries must meet all framed requirements.

JUNIORS:

Please refer to each section rules and regulations for submission guidelines, including size restrictions and display requirements.

NEEDLEPOINT AND STITCHERY:

All framed items will be displayed on pegboard walls. Therefore, these items must be equipped for hanging as follows:

With picture wire for hanging.

The wire attached with screw eyes on wooden frames or proper d-rings on metal frames. Saw tooth hangers will not be accepted.

Finished size of picture including frame must not exceed 120" perimeter.

All stitchery articles must be sewn and may include a variety of embellishing techniques.

No quilted clothing will be accepted in this section.

Christening sets must be limited to two articles (e.g. gown and bonnet).

QUILTS:

All quilts must have a minimum 4" sleeve opening, securely sewn to the quilt (for display purposes). The sleeve should be secured at both the top and the bottom of the sleeve to ensure the quilt hangs properly. Any quilts that do not have sleeves OR quilts with pinned-on sleeves will not be accepted. Accessories do not need a sleeve.

Names of the piecer and the quilter (if they are two different people) must be stated on each entry.

Include the size of your quilt (width and height) to assist us in designing the layout of the quilt display. We encourage you to include this information on your application.

Modern quilts are defined as those that include the use of bold colors and prints, high contrast and graphic areas of solid color, improvising piecing, minimalism expansive negative space and alternate grid work.

Classes 9200, 9300, 9400, 9700: Names of the piecer and quilter need to be listed as a dual entry with the owner listed first, the other person second. Only one ribbon and a cash prize will be awarded. Permission to appear in the show should be granted by the non-owner.

Group quilts must enter contact person's name and then back slash the group's name or words "group quilt". E.g. Jane Doe/ Happy Quilters' Guild.

Cover any quilt labels or signatures on the quilt, prior to submission.

Be aware that safety pins are used for display purposes.

8. The Committee reserves the right to move entries to another Class as appropriate.
9. The Committee reserves the right to accept or reject entries based on condition, quality and suitability for exhibit. We further reserve the right to not display entries depending on space availability and display dimensions.

Specifically, The Committee will not accept any entry that:

Is not suitably equipped for display (e.g. framed items, quilts)

Requires electrical, mechanical or battery operated devices

Is deemed too fragile to be displayed

Is deemed too large to be displayed

Is dirty or damaged or wet

Falls beyond the 24 - month criteria

10. No information or signs will be displayed with the entry. If space allows, the short description provided on the registration form will be displayed next to the item. This will be printed by The Committee. No information or signs brought in will be displayed.
11. Anyone who deliberately tries to deceive The Committee in regard to ownership of an entered piece or anyone who purchases or "borrows" items to enter/exhibit as their own will forfeit all claims as a participant for that year. Further, if a participant tries to deceive the Committee more than once, he or she will be banned from entering any future Creative Arts and Crafts competitions.
12. Participants in the Western Art Show will not be allowed to enter pieces for exhibition in the Creative Arts and Crafts exhibition. We welcome participants in the Scholarship Program to enter pieces in the Creative Arts and Crafts exhibition.

IMPORTANT NOTE:

Personal and demographic information provided will not be used for purposes other than those related to Calgary Stampede operated programs or business purposes. Your information will be handled with discretion and will not be sold, given away, or provided to parties outside the Calgary Stampede without your consent, unless the law requires that it be shared.

By entering, the participant agrees that pictures, images or representations of his/her entry may be used by the Calgary Stampede in promotional content created by the Calgary Stampede.

WE THANK YOU FOR YOUR PARTICIPATION!

PARKING

Information regarding parking during Take-in or Pick-up will be provided closer to Stampede due to construction.







CS
Calgary Stampede