

How to take meter readings on the Secure Liberty 100.



The Secure Liberty 100 meter could make your life simpler when you take meter readings. Learn how to use this smart device and make the most of its features.

The benefits of having a Secure Liberty 100 meter.

- ✓ **Automatic readings.**
It automatically sends readings to us through the Wider Area Network (WAN) or Home Area Network (HAN). So, wave goodbye to manual readings!
- ✓ **Track your energy use.**
Once you're set up, you can monitor your energy use and manage your energy habits.
- ✓ **Pay your way.**
Pay through Direct Debit or Pay As You Go (PAYGO), and switch between the two remotely.
- ✓ **Easy installation.**
Simply register and pair your device. Done.

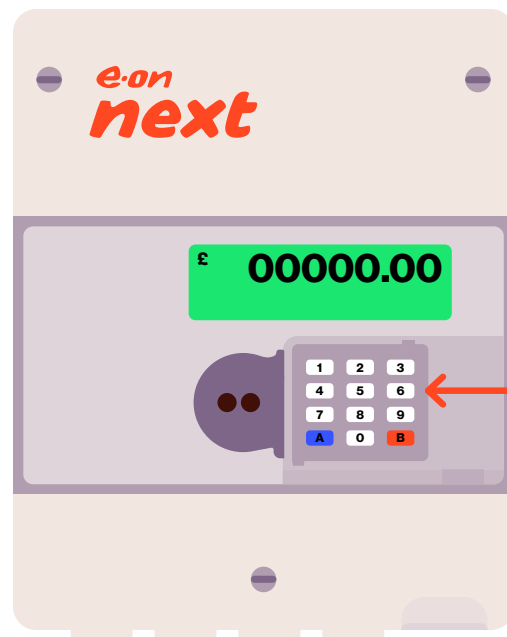
Secure Liberty 100 meter reading terms explained.

IMP R01: This code stands for your daytime reading and shows your electricity consumption during peak hours.

IMP R02: This stands for your nighttime reading. It's specifically for Economy 7 tariffs and shows your electricity use during off peak hours.

Tariff name: This is the name of your current energy plan or contract with us.

Daily standing charge: This is the fixed daily cost on your energy bill. It's charged no matter how much energy you use.



How to get a reading on your Secure Liberty 100 meter.

- 1 **Time to take a reading?**
Press '6' on your meter's keypad. This shows you basic information, including your tariff name and daily standing charge.
- 2 **Check your daytime (R1) reading.**
Keep pressing '6' until you see 'IMP R01' on the display – your daytime (R1) reading.
- 3 **Check your nighttime (R2) reading.**
If you're on an On Economy 7 electricity tariff, press '6' again. You'll see 'IMP R02' on the display – your nighttime (R2) reading.



Need for more information?

If you're still unsure about anything, our [meter reading FAQs](#) might be helpful. Alternatively, you can find us on [Facebook](#) or visit our [community](#) for the answer to common questions. Talk soon!

**e-on
next**