

# Your step-by-step guide to Vestel charging, using your E.ON Home app or RFID card.

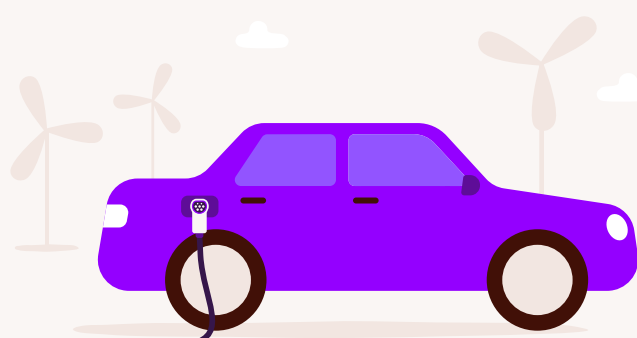
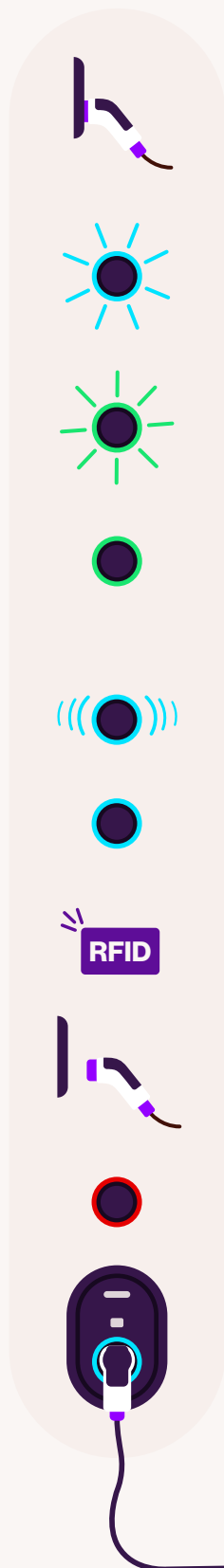
Always refer back to your vehicle handbook as makes and models could impact how the charger works with your vehicle.



## Get ready to charge...

The first step is to make sure your EV charging station and your vehicle are ready for charging.

1. It's time to plug in. Grab the charging lead and plug it into the EV charging station and your vehicle. Check out your vehicle handbook for more info on this.
2. Get your charging session underway via the RFID card or E.ON Home app (boost or schedule charging). **The blue light will flash every 2 seconds.**
3. **The green light will flash for up to 10 minutes** during the randomised delay stage. It's worth noting that the RFID card can override this stage if used again.
4. On standby and ready for action. The EV charging station will be on standby until your vehicle accepts the charge. Just check the vehicle schedule time and make sure it's in park and lock mode.
5. Look out for a **pulsating blue light** as it shows the vehicle is charging.
6. When you see a **solid blue light**, your vehicle is either fully charged or the session has been suspended.
7. Time to end your session? Use the RFID card or E.ON Home app again.
8. Now you can remove the charging cable from your vehicle. Need help with this? Take a look at the vehicle handbook.
9. If there's a **constant red light**, simply, turn off the EV charging station and then turn it on again.



If you need some more help, call us on **0333 202 4417**.

**e.on**  
**next**