

	Month 1	Month 2	Month 3	Month 4
IT				
S CTO / Architecture	5850	5850	5850	5850
S Developer	3,500	3,500	3,500	3,500
s Developer	3,000	3,000	3,000	3,000
S HTML5/CSS	3500	3500	3500	3500
S QA/Testing /Reports	2000	2000	2000	2000
QA/Testing /Reports				
S Customer Support	1000	1000	1000	2000
S Customer Support	500	500	500	1000
S Customer Support				
C Servers/Hosting	2,500	2,500	2,500	2,500
C Software Licenses	1000	1000	1000	1000
C Native App Development	5000	5000	5000	5000
Design				
C Design Studio	2,000	2,000	2,000	2,000
C Youtube Videos	1000	1000	1000	1000
Content				
S Editor / Webmaster	2,500	2,500	2,500	2,500
C Getty - Celeb Images	1600	1600	1600	2500
C News Feed	600	600	600	600
Technology / Content Total				
	35550	35550	35550	37950
Marketing				
Marketing Plan				
Marketing	10,000	15,000	20,000	25,000
PR	3,000	3,000	3,000	3,000
TOTAL VARIABLE MARKETING	13,000	18,000	23,000	28,000
Legal / Professional				
Regulatory Advice/UK License Application				
Gambling License				
IT Compliance Testing				
IT Compliance Consultancy				
Advice / Ts & Cs etc				
Contracts / General	2,000	2,000	2,000	2,000
Recruitment				
Audit	500	500	500	500
Legal and Professional	2000	2000	2000	2000
Staff / Office / Overhead				
S REDACTED	2000	2000	2000	2000

S Adam Cole	5,000	5,000	5,000	5,000
S REDACTED	5,000	5,000	5,000	5,000
S REDACTED				
S REDACTED	3000	3000	3000	3000
S REDACTED	2000	2000	2000	2000
S REDACTED		3,500	3,500	3,500
S REDACTED	5000	5000	5000	5000
C Office	3500	3500	3500	3500
C Insurance	100	100	100	100
C Expenses	2000	2000	2000	2000
PAYE/NIC	5,637	6,120	6,120	6,327
Total Staff/Office/Overhead	33237.3	37220	37220	37427
Total	83,787	92,770	97,770	105,377
Accumulated Total	83,787	176,558	274,328	379,705
To New Budget sheet	83,787	92,770	97,770	105,377
Pre - Launch				

5,000	5,000	5,000	5,000	5,000	5,000	5,000	5,000	8,000	8,000
5,000	5,000	5,000	5,000	5,000	5,000	5,000	5,000	8,000	8,000
								3,500	3,500
3000	3000	3000	3000	3000	3000	3000	3000	3000	3000
2000	2000	2000	2000	3000	3000	3000	3000	3000	3000
3,500	3,500	3,500	3,500	5,000	5,000	5,000	5,000	5,000	5,000
5000	5000	5000	5000	5000	5000	5000	5000	5000	5000
3500	6000	6000	6000	6000	6000	6000	8000	8000	8000
100	100	100	100	100	100	100	100	500	500
2000	2000	2000	2000	2000	2000	5000	5000	5000	5000
6,327	6,327	6,327	6,465	6,810	6,810	6,810	6,810	8,901	8,901
37427.3	39927.3	39927.3	40065.3	42910.3	42910.3	45910.3	47910.3	59901	59901
104,377	106,877	108,377	109,515	112,360	116,260	119,260	121,260	146,401	146,401
484,083	590,960	699,337	808,852	921,213	1,037,473	1,156,733	1,277,994	1,424,395	1,570,796
104,377	106,877	108,377	109,515	112,360	116,260	119,260	121,260	146,401	146,401
Month 1	Month 2	Month 3	Month 4	Month 5	Month 6	Month 7	Month 8	Month 9	Month 10

8,000	8,000	8,000	8,000	8,000	8,000	8,000	8,000	8,000
8,000	8,000	8,000	8,000	8,000	8,000	8,000	8,000	8,000
3,500	3,500	3,500	3,500	3,500	3,500	3,500	3,500	3,500
3000	3000	3000	3000	3000	3000	3000	3000	3000
3000	3000	3,500	3,500	3,500	3,500	3,500	3,500	3,500
5,000	5,000	5,000	5,000	5,000	5,000	5,000	5,000	5,000
5000	5000	5000	5000	5000	6000	6000	6000	6000
8000	8000	8000	8000	8000	8000	8000	12500	12500
500	500	500	500	500	500	500	500	500
5000	5000	10,000	10,000	10,000	10,000	10,000	10,000	10,000
8,901	8,901	8,970	8,970	9,108	9,246	9,246	9,246	9,246
59901	59901	65470	65470	65608	66746	66746	71246	71246
146,401	148,901	154,470	154,470	156,108	157,246	157,246	164,246	164,246
1,717,197	1,866,098	2,020,568	2,175,038	2,331,146	2,488,392	2,645,638	2,809,884	2,974,130
146,401	148,901	154,470	154,470	156,108	157,246	157,246	164,246	164,246
Month 11	Month 12	Month 13	Month 14	Month 15	Month 16	Month 17	Month 18	Month 19

8,000	10,000	10,000	10,000	10,000	10,000	10,000	10,000	10,000
8,000	8,000	8,000	8,000	8,000	8,000	8,000	8,000	8,000
3,500	3,500	3,500	3,500	3,500	3,500	3,500	3,500	3,500
3000	3000	3000	3000	3000	3000	3000	3000	3000
3,500	3,500	3,500	3,500	3,500	3,500	3,500	3,500	3,500
5,000	5,000	5,000	5,000	5,000	5,000	5,000	5,000	5,000
6000	6000	6000	6000	6000	6000	6000	6000	7000
12500	12500	12500	12500	12500	12500	12500	12500	12500
500	500	500	500	500	500	500	500	500
10,000	10,000	10,000	10,000	10,000	10,000	10,000	10,000	10,000
9,246	9,867	9,867	9,867	9,867	9,867	9,867	9,867	9,798
71246	73867	73867	73867	73867	73867	73867	73867	74798
164,746	170,867	181,867	184,867	186,867	188,867	188,867	189,367	188,798
3,138,876	3,309,743	3,491,610	3,676,477	3,863,344	4,052,211	4,241,078	4,430,445	4,619,243
164,746	170,867	181,867	184,867	186,867	188,867	188,867	189,367	188,798
Month 20	Month 21	Month 22	Month 23	Month 24	Month 25	Month 26	Month 27	Month 28

Month 33	Month 34	Month 35	Month 36	
				IT
8000	8000	8000	8000	
4,500	4,500	4,500	4,500	Development
4,000	4,000	4,000	4,000	
3500	3500	3500	3500	Sys Admin
3,000	3,000	3,000	3,000	
2,500	2,500	2,500	2,500	
2,500	2,500	2,500	2,500	Customer Support
2,500	2,500	2,500	2,500	
2,500	2,500	2,500	2,500	
14000	14000	14000	14000	Servers/Hosting
3,500	3,500	3,500	3,500	
3500	3500	3500	3500	
				Design
5,000	5,000	5,000	5,000	Giant Arc
				Content
2,500	2,500	2,500	2,500	Editor
4000	4000	4000	4000	Celeb Images
3,000	3,000	3,000	3,000	News Feed
68500	68500	68500	68500	Technology Total
				Marketing
				Marketing Plan
40,000	40,000	40,000	40,000	Marketing (paid on 30 days)
3,000	3,000	3,000	3,000	PR
43,000	43,000	43,000	43,000	TOTAL VARIABLE MARKETING
				Legal / Professional
				Regulatory Advice
				Incorporation / Regulation
				Advice / Ts & Cs etc
2,500	2,500	2,500	2,500	2,500 Contracts / General
500	500	500	500	
2500	2500	2500	2500	2,500 Legal and Professional
				Staff
2000	2000	2000	2000	Chairman

10,000	10,000	10,000	10,000	6000	CEO
8,000	8,000	8,000	8,000		Marketing Director (CPA)
3,500	3,500	3,500	3,500		Marketing Exec.
3000	3000	3000	3000	3000	PA
3,500	3,500	3,500	3,500	3000	Book keeper
5,000	5,000	5,000	5,000	10000	Finance Director
7000	7000	7000	7000		
12500	12500	12500	12500	12500	Office
500	500	500	500		Insurance
10,000	10,000	10,000	10,000	5000	Expenses
9,798	9,798	9,798	9,798		
74798	74798	74798	74798	22000	Overhead
188,798	188,798	188,798	188,798		Total
4,808,041	4,996,839	5,185,637	5,374,435		Accumulated Total

188,798	188,798	188,798	188,798
---------	---------	---------	---------

Month 29	Month 30	Month 31	Month 32	Month 33	Month 34	Month 35	Month 36
----------	----------	----------	----------	----------	----------	----------	----------

To New Budget sheet

FootballINDEX - Financial Planning

Index of Worksheets:

<i>P&L Consolidated</i>	This is the full P&L for FootballINDEX own-label and partner financials
<i>P&L Goal.com</i>	This is a forecast P&L for a partnership with Goal.com
<i>P&L The Sun</i>	This is a forecast P&L for a partnership with The Sun
<i>P&L Mirror</i>	This is a forecast P&L for a partnership with The Mirror
<i>Costs</i>	This sheet contains all of our costs
<i>Dividend Model</i>	This sheet contains dividend payment forecasts and stress tests against
<i>Lifespan of Average Footballer</i>	This sheet investigates the lifespan of the average footballer and how l

		Month 1	Month 2	Month 3
Own-Label Marketing Budget				
Online Marketing Spend		10,000	15,000	25,000
<i>Estimated CPV</i>	40p	0.40	0.40	0.40
PR Spend		3,000	3,000	3,000
Visitors				
CPC Traffic	#	25,000	37,500	62,500
PR/Viral/Word of Mouth Traffic		40,000	40,000	40,000
<i>SEO Traffic (increasing 15% - 0.75%)</i>		0.150	0.147	0.144
Seo Traffic - FOC		25,000	28,675	32,806
Free Players				
<i>% Conversion to Portfolio: Paid/PR Traffic</i>	7.5% - 11%	7.5%	7.575%	7.651%
<i>% Conversion to Portfolio: Seo Traffic</i>	2% - 4.7%	2.0%	2.1%	2.1%
CPC/PR/SEO Visitors to create Portfolio	#	5,375	6,458	8,531
Affiliate Traffic to create Portfolio				
Total players to create portfolio	#	5,375	6,458	8,531
Own-Label Money Players				
<i>Conversion % after 30 days</i>	15% - 19%	-	15.0%	15.150%
CPC/PR/SEO Portfolios to Money Players	#	-	806	978
Total Paying Players net of churn (7.5%)	7.50%	-	746	1,595
Publishing Partners - Money Players				
Mirror - Paying Players with Account			363	440
Goal.com - Paying Players with Account				
The Sun - Paying Players with Account				
Total Partner Paying Players with Account			363	440
Total Partner Paying Players net of churn (7.5%)	7.50%		336	718
Net Acquired			1,169	1,419
Player Spend				
Net Average weekly spend			3.00	3.00
Average monthly spend			13.000	13.000
Average Monthly Spend on Bingo				
Revenue				
Monthly deposits into the game		-	14,057.98	30,064.25
Less 2.5% processing, fraud	2.5%	-	351.45	751.61
Monthly Expenditure on Futures			13,707	29,313

Dividend Payout (estimate + contingency) @ 20p		913	2,621
Gross Gambling Yield		12,793	26,692
Betting Tax (15%)	15%	1,919	4,004
Gross Cash Contribution		- 10,874	22,688
P & L			
Costs		83,787	92,770
Partner Rev-Share +MRG		-	5,000
P & L		-83,787	-86,896
Cash Balance		-83,787	-170,683

Month 4	Month 5	Month 6	Month 7	Month 8	Month 9	Month 10
---------	---------	---------	---------	---------	---------	----------

25,000	25,000	25,000	25,000	25,000	25,000	25,000
0.40	0.40	0.40	0.40	0.40	0.40	0.40
3,000	3,000	3,000	3,000	3,000	3,000	3,000

62,500	62,500	62,500	62,500	62,500	62,500	62,500
40,000	40,000	40,000	40,000	40,000	40,000	40,000
0.141	0.138	0.136	0.133	0.130	0.128	0.125
37,437	42,617	48,395	54,826	61,965	69,873	78,612

7.727%	7.805%	7.883%	7.961%	8.041%	8.113%	8.186%
2.2%	2.2%	2.3%	2.3%	2.4%	2.4%	2.5%
8,727	8,940	9,175	9,432	9,715	10,019	10,355
8,727	8,940	9,175	9,432	9,715	10,019	10,355

15.302%	15.455%	15.609%	15.765%	15.923%	16.082%	16.243%
1,305	1,349	1,396	1,446	1,502	1,562	1,627
2,683	3,729	4,740	5,723	6,683	7,627	8,560

587	607	628	651	676	703	732
457	472	488	506	526	547	570
		977	1,012	1,051	1,094	1,139
1,044	1,079	2,093	2,170	2,253	2,344	2,441
1,630	2,506	4,254	5,942	7,580	9,179	10,749
2,350	2,428	3,489	3,616	3,755	3,906	4,068

3.00	3.00	3.00	3.00	3.00	3.00	3.00
13,000	13,000	13,000	13,000	13,000	13,000	13,000

56,065.36	81,052.60	116,926.57	151,639.82	185,416.17	218,479.60	251,015.95
1,401.63	2,026.31	2,923.16	3,791.00	4,635.40	5,461.99	6,275.40
54,664	79,026	114,003	147,849	180,781	213,018	244,741

5,426	8,986	13,525	18,711	24,876	31,766	39,095
49,237	70,040	100,478	129,137	155,904	181,252	205,645
7,386	10,506	15,072	19,371	23,386	27,188	30,847
41,852	59,534	85,407	109,767	132,519	154,064	174,798

105,377	104,377	106,877	108,377	109,515	112,360	116,260
8,858	11,963	20,907	27,957	35,214	42,074	48,653
-72,383	-56,806	-42,378	-26,568	-12,211	-371	9,885
-323,149	-379,955	-422,333	-448,901	-461,111	-461,482	-451,597

Month 11 Month 12 Month 13 Month 14 Month 15 Month 16 Month 17

25,000	25,000	30,000	30,000	30,000	30,000	30,000
0.40	0.40	0.40	0.40	0.40	0.40	0.40
3,000	3,000	3,000	3,000	3,000	3,000	3,000

62,500	62,500	75,000	75,000	75,000	75,000	75,000
40,000	40,000	40,000	40,000	40,000	40,000	40,000
0.123	0.120	0.118	0.115	0.113	0.111	0.109
88,246	98,846	110,480	123,225	137,155	152,350	168,890

8.260%	8.334%	8.409%	8.485%	8.561%	8.639%	8.716%
2.6%	2.6%	2.7%	2.8%	2.8%	2.9%	3.0%
10,726	11,137	12,643	13,155	13,722	14,347	15,038
10,726	11,137	12,643	13,155	13,722	14,347	15,038

16.405%	16.569%	16.735%	16.902%	16.987%	17.072%	17.157%
1,699	1,777	1,864	2,137	2,235	2,343	2,462
9,489	10,422	11,364	12,488	13,619	14,764	15,934

764	800	839	962	1,006	1,054	1,108
595	622	652	748	782	820	862
1,189	1,244	1,305	1,496	1,564	1,640	1,723
2,548	2,666	2,796	3,205	3,352	3,514	3,692
12,300	13,843	15,391	17,201	19,012	20,836	22,689
4,247	4,443	4,659	5,342	5,587	5,856	6,154

3.00	3.00	3.00	3.00	3.00	3.00	3.00
13,000	13,000	13,000	13,000	13,000	13,000	13,000

283,256.79	315,439.61	347,809.82	385,964.26	424,196.47	462,804.11	502,095.27
7,081.42	7,885.99	8,695.25	9,649.11	10,604.91	11,570.10	12,552.38
276,175	307,554	339,115	376,315	413,592	451,234	489,543

46,972	55,326	64,099	73,371	83,075	93,159	103,578
229,203	252,227	275,016	302,945	330,516	358,075	385,965
34,380	37,834	41,252	45,442	49,577	53,711	57,895
194,823	214,393	233,763	257,503	280,939	304,364	328,070

119,260	121,260	146,401	146,401	146,401	148,901	154,470
54,988	61,156	67,237	74,595	81,843	89,069	96,363
20,575	31,977	20,125	36,507	52,695	66,393	77,238
-431,023	-399,046	-378,920	-342,414	-289,719	-223,326	-146,088

Month 18 Month 19 Month 20 Month 21 Month 22 Month 23 Month 24

30,000	30,000	30,000	30,000	30,000	30,000	30,000
0.40	0.40	0.40	0.40	0.40	0.40	0.40
3,000	3,000	3,000	3,000	3,000	3,000	3,000

75,000	75,000	75,000	75,000	75,000	75,000	75,000
40,000	40,000	40,000	40,000	40,000	40,000	40,000
0.106	0.104	0.102	0.100	0.098	0.096	0.094
186,860	206,344	227,429	250,204	274,758	301,184	329,571

8.795%	8.874%	8.954%	9.034%	9.116%	9.198%	9.280%
3.0%	3.1%	3.2%	3.3%	3.4%	3.4%	3.5%
15,801	16,641	17,568	18,589	19,713	20,948	22,304
15,801	16,641	17,568	18,589	19,713	20,948	22,304

17.243%	17.329%	17.416%	17.503%	17.590%	17.678%	17.767%
2,593	2,738	2,898	3,075	3,270	3,485	3,722
17,137	18,385	19,687	21,055	22,500	24,036	25,676

1,167	1,232	1,304	1,384	1,471	1,568	1,675
908	958	1,014	1,076	1,144	1,220	1,303
1,815	1,917	2,029	2,152	2,289	2,439	2,605
3,890	4,107	4,347	4,612	4,905	5,227	5,583
24,585	26,540	28,571	30,695	32,930	35,295	37,812
6,483	6,845	7,246	7,687	8,175	8,712	9,304

3.00	3.00	3.00	3.00	3.00	3.00	3.00
13,000	13,000	13,000	13,000	13,000	13,000	13,000

542,390.59	584,025.47	627,352.24	672,742.40	720,588.89	771,308.40	825,343.74
13,559.76	14,600.64	15,683.81	16,818.56	18,014.72	19,282.71	20,633.59
528,831	569,425	611,668	655,924	702,574	752,026	804,710

114,297	125,289	136,535	148,243	160,418	173,071	186,216
414,534	444,136	475,134	507,681	542,156	578,955	618,495
62,180	66,620	71,270	76,152	81,323	86,843	92,774
352,354	377,515	403,864	431,529	460,833	492,112	525,720

154,470	156,108	157,246	157,246	164,246	164,246	164,746
103,813	111,512	119,554	127,979	136,885	146,374	156,553
94,071	109,895	127,064	146,304	159,701	181,491	204,421
-52,017	57,878	184,941	331,245	490,946	672,437	876,858

Month 25 Month 26 Month 27 Month 28 Month 29 Month 30 Month 31

40,000	40,000	40,000	40,000	40,000	40,000	40,000
0.40	0.40	0.40	0.40	0.40	0.40	0.40
3,000	3,000	3,000	3,000	3,000	3,000	3,000

100,000	100,000	100,000	100,000	100,000	100,000	100,000
40,000	40,000	40,000	40,000	40,000	40,000	40,000
0.092	0.091	0.089	0.087	0.085	0.083	0.082
360,012	392,600	427,428	464,586	504,167	546,261	590,958

9.364%	9.448%	9.533%	9.619%	9.706%	9.793%	9.881%
3.6%	3.7%	3.8%	3.9%	4.0%	4.1%	4.2%
26,133	27,785	29,591	31,565	33,719	36,068	38,625
26,133	27,785	29,591	31,565	33,719	36,068	38,625

17.856%	17.945%	18.035%	18.125%	18.215%	18.306%	18.398%
3,982	4,690	5,011	5,363	5,750	6,173	6,636
27,434	29,714	32,121	34,673	37,391	40,296	43,412

1,792	2,110	2,255	2,414	2,587	2,778	2,986
1,394	1,641	1,754	1,877	2,012	2,160	2,323
2,788	3,283	3,508	3,754	4,025	4,321	4,645
5,974	7,034	7,516	8,045	8,625	9,259	9,954
40,502	43,971	47,626	51,495	55,611	60,005	64,712
9,956	11,724	12,527	13,408	14,374	15,432	16,589

3.00	3.00	3.00	3.00	3.00	3.00	3.00
13,000	13,000	13,000	13,000	13,000	13,000	13,000

883,166.23	957,907.07	1,036,703.28	1,120,186.80	1,209,023.69	1,303,917.07	1,405,610.14
22,079.16	23,947.68	25,917.58	28,004.67	30,225.59	32,597.93	35,140.25
861,087	933,959	1,010,786	1,092,182	1,178,798	1,271,319	1,370,470

199,872	214,252	229,362	245,213	261,823	279,215	297,417
661,215	719,707	781,424	846,969	916,975	992,104	1,073,053
99,182	107,956	117,214	127,045	137,546	148,816	160,958
562,033	611,751	664,210	719,924	779,429	843,289	912,095

170,867	181,867	184,867	186,867	188,867	188,867	189,367
167,535	182,528	198,337	215,118	233,032	252,247	272,942
223,631	247,356	281,006	317,938	357,530	402,175	449,786
1,100,489	1,347,845	1,628,851	1,946,789	2,304,320	2,706,494	3,156,280

Month 32	Month 33	Month 34	Month 35	Month 36	
40,000	40,000	40,000	40,000	40,000	1,115,000
0.40	0.40	0.40	0.40	0.40	35p
3,000	3,000	3,000	3,000	3,000	108,000
100,000	100,000	100,000	100,000	100,000	
40,000	40,000	40,000	40,000	40,000	
0.080	0.079	0.077	0.075	0.074	
638,345	688,507	741,530	797,494	856,477	
9.970%	10.060%	10.150%	10.242%	10.334%	17% -20%
4.3%	4.4%	4.5%	4.6%	4.7%	2% - 4.7%
41,407	44,430	47,711	51,267	55,119	#
41,407	44,430	47,711	51,267	55,119	#
18.490%	18.582%	18.675%	18.769%	18.863%	16% - 20%
7,142	7,694	8,297	8,955	9,670	#
46,762	50,373	54,270	58,483	63,042	7.50%
3,214	3,462	3,734	4,030	4,352	
2,500	2,693	2,904	3,134	3,385	
4,999	5,386	5,808	6,268	6,769	
10,713	11,542	12,446	13,432	14,506	
69,767	75,211	81,083	87,426	94,287	7.50%
17,854	19,236	20,744	22,387	24,176	
3.00	3.00	3.00	3.00	3.00	£4.50
13.000	13.000	13.000	13.000	13.000	
1,514,889.16	1,632,586.55	1,759,583.90	1,896,815.11	2,045,269.48	
37,872.23	40,814.66	43,989.60	47,420.38	51,131.74	
1,477,017	1,591,772	1,715,594	1,849,395	1,994,138	

316,463	336,391	357,243	379,067	401,914	
1,160,554	1,255,381	1,358,351	1,470,328	1,592,224	
174,083	188,307	203,753	220,549	238,834	
986,471	1,067,074	1,154,598	1,249,778	1,353,390	16,553,327
188,798	188,798	188,798	188,798	188,798	5,374,435
295,304	319,531	345,830	374,423	405,543	4,895,922
502,369	558,745	619,970	686,557	759,049	
3,658,649	4,217,394	4,837,364	5,523,921	6,282,970	6,282,970

Own-Label Marketing Budget

Online Marketing Spend

Estimated CPV

PR Spend

Visitors

CPC Traffic

PR/Viral/Word of Mouth Traffic

SEO Traffic (increasing 15% - 0.75%)

Seo Traffic - FOC

Free Players

% Conversion to Portfolio: Paid/PR Traffic

% Conversion to Portfolio: Seo Traffic

CPC/PR/SEO Visitors to create Portfolio

Affiliate Traffic to create Portfolio

Total players to create portfolio

Money Players

Conversion % after 30 days

CPC/PR/SEO Portfolios to Money Players

Total Paying Players net of churn (7.5%)

Publishing Partners - Money Players

Mirror - Paying Players with Account

Goal.com - Paying Players with Account

The Sun - Paying Players with Account

Total Partner Paying Players with Account

Total Partner Paying Players net of churn (7.5%)

Player Spend

Net Average weekly spend

Average monthly spend

Average Monthly Spend on Bingo

Revenue

Monthly deposits into the game

Less 2.5% processing, fraud

Monthly Expenditure on Futures

Dividend Payout (estimate) @ 20p

Gross Gambling Yield

Betting Tax (15%)

Gross Cash Contribution

P & L

Costs

Partner Rev-Share +MRG

P & L

Cash Balance

		Month 1	Month 2	Month 3
Mirror Partnership - Money Players				
Total Paying Players with Account		-	-	-
Total Partner Paying Players net of churn (7.5%)	7.50%		-	-
Player Spend				
Net Average weekly spend			3.00	3.00
Average monthly spend			13.00	13.00
Dividend Payout Ratio			0.562963	0.755446593
Revenue				
Monthly deposits into the game		-	-	-
Less 2.5% processing, fraud	2.5%	-	-	-
Monthly Expenditure on Futures			-	-
Dividend Payout (estimate) @ 20p		-	-	-
Gross Gambling Yield			-	-
Betting Tax (15%)	15%		-	-
Gross Cash Contribution		-	-	-
Minimum Revenue Guarantee		£	-	£
Revenue Share		£	-	£
Partner Payment		£	-	£

Year 1 Partner Revenue	£ 80,473.30
Year 2 Partner Revenue	£310,563.64
Year 3 Partner Revenue	£762,958.74

Month 4 Month 5 Month 6 Month 7 Month 8 Month 9 Month 10

457	472	488	506	526	547	570
423	828	1,217	1,594	1,961	2,320	2,673

3.00	3.00	3.00	3.00	3.00	3.00	3.00
13.00	13.00	13.00	13.00	13.00	13.00	13.00

0.838804735 0.960874347 1.002490313 1.069411438 1.162767335 1.260099164 1.349820759

5,494.21	10,758.39	15,824.92	20,725.64	25,492.12	30,155.96	34,743.39
137.36	268.96	395.62	518.14	637.30	753.90	868.58
5,357	10,489	15,429	20,207	24,855	29,402	33,875
532	1,193	1,830	2,557	3,420	4,385	5,411
4,825	9,297	13,599	17,650	21,435	25,018	28,464
724	1,394	2,040	2,648	3,215	3,753	4,270
4,101	7,902	11,559	15,003	18,219	21,265	24,194

£ 3,000.00	£ 3,000.00	£ 3,000.00	£ 3,000.00	£ 3,000.00	£ 3,000.00	£ 3,000.00
£ 2,050.67	£ 3,951.08	£ 5,779.49	£ 7,501.29	£ 9,109.73	£ 10,632.44	£ 12,097.02
£ 3,000.00	£ 3,951.08	£ 5,779.49	£ 7,501.29	£ 9,109.73	£ 10,632.44	£ 12,097.02

Month 11 Month 12 Month 13 Month 14 Month 15 Month 16 Month 17

595	622	652	748	782	820	862
3,022	3,371	3,721	4,134	4,547	4,965	5,389

3.00	3.00	3.00	3.00	3.00	3.00	3.00
13.00	13.00	13.00	13.00	13.00	13.00	13.00

1.437185262 1.520083411 1.597208711 1.647504998 1.697292148 1.744534869 1.787858084

39,287.02	43,820.28	48,377.71	53,743.00	59,117.41	64,542.74	70,062.24
982.18	1,095.51	1,209.44	1,343.58	1,477.94	1,613.57	1,751.56
38,305	42,725	47,168	52,399	57,639	62,929	68,311
6,515	7,686	8,916	10,216	11,578	12,992	14,453
31,790	35,039	38,253	42,183	46,062	49,937	53,857
4,768	5,256	5,738	6,327	6,909	7,491	8,079
27,021	29,783	32,515	35,856	39,153	42,447	45,779

£ 3,000.00	£ 3,000.00	£ 3,000.00	£ 3,000.00	£ 3,000.00	£ 3,000.00	£ 3,000.00
£ 13,510.71	£ 14,891.55	£ 16,257.35	£ 17,927.80	£ 19,576.28	£ 21,223.31	£ 22,889.42
£ 13,510.71	£ 14,891.55	£ 16,257.35	£ 17,927.80	£ 19,576.28	£ 21,223.31	£ 22,889.42

Month 18	Month 19	Month 20	Month 21	Month 22	Month 23	Month 24
908	958	1,014	1,076	1,144	1,220	1,303
5,825	6,274	6,742	7,232	7,748	8,295	8,878
3.00	3.00	3.00	3.00	3.00	3.00	3.00
13.00	13.00	13.00	13.00	13.00	13.00	13.00
1.826311264	1.859235276	1.886184245	1.909751072	1.929380495	1.944678921	1.95538987
75,720.92	81,565.83	87,646.41	94,014.75	100,725.95	107,838.42	115,414.22
1,893.02	2,039.15	2,191.16	2,350.37	2,518.15	2,695.96	2,885.36
73,828	79,527	85,455	91,664	98,208	105,142	112,529
15,957	17,498	19,075	20,717	22,424	24,197	26,040
57,871	62,029	66,380	70,948	75,784	80,945	86,489
8,681	9,304	9,957	10,642	11,368	12,142	12,973
49,191	52,724	56,423	60,306	64,416	68,803	73,516
£ 3,000.00	£ 3,000.00	£ 3,000.00	£ 3,000.00	£ 3,000.00	£ 3,000.00	£ 3,000.00
£ 24,595.33	£ 26,362.16	£ 28,211.58	£ 30,152.76	£ 32,208.24	£ 34,401.63	£ 36,757.78
£ 24,595.33	£ 26,362.16	£ 28,211.58	£ 30,152.76	£ 32,208.24	£ 34,401.63	£ 36,757.78

Month 25 Month 26 Month 27 Month 28 Month 29 Month 30 Month 31

1,394	1,641	1,754	1,877	2,012	2,160	2,323
9,501	10,307	11,156	12,056	13,013	14,036	15,131

3.00	3.00	3.00	3.00	3.00	3.00	3.00
13.00	13.00	13.00	13.00	13.00	13.00	13.00

1.961375967 1.938445147 1.917427021 1.897165255 1.876830224 1.855840075 1.833804215

123,519.41	133,992.42	145,032.48	156,728.12	169,172.64	182,464.51	196,707.83
3,087.99	3,349.81	3,625.81	3,918.20	4,229.32	4,561.61	4,917.70
120,431	130,643	141,407	152,810	164,943	177,903	191,790
27,954	29,970	32,087	34,308	36,636	39,072	41,622
92,477	100,673	109,319	118,502	128,308	138,831	150,168
13,872	15,101	16,398	17,775	19,246	20,825	22,525
78,606	85,572	92,922	100,726	109,062	118,006	127,643

£ 3,000.00	£ 3,000.00	£ 3,000.00	£ 3,000.00	£ 3,000.00	£ 3,000.00	£ 3,000.00
£ 39,302.91	£ 42,786.01	£ 46,460.77	£ 50,363.16	£ 54,530.79	£ 59,003.09	£ 63,821.48
£ 39,302.91	£ 42,786.01	£ 46,460.77	£ 50,363.16	£ 54,530.79	£ 59,003.09	£ 63,821.48

Month 32	Month 33	Month 34	Month 35	Month 36	
2,500	2,693	2,904	3,134	3,385	
16,309	17,577	18,945	20,423	22,022	7.50%
3.00	3.00	3.00	3.00	3.00	£4.50
13.00	13.00	13.00	13.00	13.00	
1.810481317	1.785746984	1.759568067	1.731981726	1.703078077	
212,012.72	228,495.73	246,280.34	265,497.32	286,285.19	
5,300.32	5,712.39	6,157.01	6,637.43	7,157.13	
206,712	222,783	240,123	258,860	279,128	
44,290	47,081	50,002	53,058	56,258	
162,423	175,702	190,122	205,802	222,870	
24,363	26,355	28,518	30,870	33,431	
138,059	149,347	161,603	174,932	189,440	2,306,093
£ 3,000.00	£ 3,000.00	£ 3,000.00	£ 3,000.00	£ 3,000.00	
£ 69,029.60	£ 74,673.48	£ 80,801.74	£ 87,465.78	£ 94,719.94	
£ 69,029.60	£ 74,673.48	£ 80,801.74	£ 87,465.78	£ 94,719.94	

Publishing Partners - Money Players

Total Partner Paying Players with Account

Total Partner Paying Players net of churn (7.5%)

Player Spend

Net Average weekly spend

Average monthly spend

Revenue

Monthly deposits into the game

Less 2.5% processing, fraud

Monthly Expenditure on Pledges

Dividend Payout (estimate) @ 20p

Gross Gambling Yield

Betting Tax (15%)

Gross Cash Contribution

		Month 1	Month 2
Mirror Partnership - Money Players			
Total Paying Players with Account		-	-
Total Partner Paying Players net of churn (7.5%)	7.50%		-
Player Spend			
Net Average weekly spend			3.00
Average monthly spend			13.00
Dividend Payout Ratio			0.562963
Revenue			
Monthly deposits into the game		-	-
Less 2.5% processing, fraud	2.5%	-	-
Monthly Expenditure on Futures			-
Dividend Payout (estimate) @ 20p		-	-
Gross Gambling Yield			-
Betting Tax (15%)	15%		-
Gross Cash Contribution		-	-
Minimum Revenue Guarantee		£	-
Revenue Share		£	-
Partner Payment		£	-

Year 1 Partner Revenue	£ 108,237.47
Year 2 Partner Revenue	£ 590,588.88
Year 3 Partner Revenue	#####

Month 3	Month 4	Month 5	Month 6	Month 7	Month 8
-	-	-	977	1,012	1,051
-	-	-	904	1,772	2,612

3.00	3.00	3.00	3.00	3.00	3.00
13.00	13.00	13.00	13.00	13.00	13.00

0.755446593 0.838804735 0.960874347 1.002490313 1.069411438 1.162767335

-	-	-	11,746.82	23,040.97	33,954.72
-	-	-	293.67	576.02	848.87
-	-	-	11,453	22,465	33,106
-	-	-	1,359	2,843	4,556
-	-	-	10,094	19,622	28,550
-	-	-	1,514	2,943	4,283
-	-	-	8,580	16,679	24,268

£	-	£	-	£	-	£	5,000.00	£	5,000.00	£	5,000.00
£	-	£	-	£	-	£	4,290.11	£	8,339.28	£	12,133.88
£	-	£	-	£	-	£	5,000.00	£	8,339.28	£	12,133.88

Month 9	Month 10	Month 11	Month 12	Month 13	Month 14
1,094	1,139	1,189	1,244	1,305	1,496
3,428	4,224	5,007	5,783	6,556	7,448
3.00	3.00	3.00	3.00	3.00	3.00
13.00	13.00	13.00	13.00	13.00	13.00
1.260099164	1.349820759	1.437185262	1.520083411	1.597208711	1.647504998
44,559.61	54,915.89	65,095.97	75,173.35	85,223.24	96,818.75
1,113.99	1,372.90	1,627.40	1,879.33	2,130.58	2,420.47
43,446	53,543	63,469	73,294	83,093	94,398
6,479	8,553	10,795	13,185	15,706	18,405
36,967	44,990	52,674	60,109	67,387	75,993
5,545	6,748	7,901	9,016	10,108	11,399
31,422	38,241	44,773	51,093	57,279	64,594
£ 5,000.00	£ 5,000.00	£ 5,000.00	£ 5,000.00	£ 5,000.00	£ 5,000.00
£ 15,710.90	£ 19,120.72	£ 22,386.35	£ 25,546.34	£ 28,639.30	£ 32,297.17
£ 15,710.90	£ 19,120.72	£ 22,386.35	£ 25,546.34	£ 28,639.30	£ 32,297.17

Month 15 Month 16 Month 17 Month 18 Month 19 Month 20

1,564	1,640	1,723	1,815	1,917	2,029
8,336	9,228	10,129	11,049	11,993	12,970

3.00	3.00	3.00	3.00	3.00	3.00
13.00	13.00	13.00	13.00	13.00	13.00

1.697292148 1.744534869 1.787858084 1.826311264 1.859235276 1.886184245

108,367.61	119,958.31	131,681.84	143,632.39	155,907.93	168,610.87
2,709.19	2,998.96	3,292.05	3,590.81	3,897.70	4,215.27
105,658	116,959	128,390	140,042	152,010	164,396
21,223	24,147	27,165	30,267	33,446	36,696
84,436	92,813	101,225	109,774	118,564	127,700
12,665	13,922	15,184	16,466	17,785	19,155
71,770	78,891	86,041	93,308	100,779	108,545

£ 5,000.00	£ 5,000.00	£ 5,000.00	£ 5,000.00	£ 5,000.00	£ 5,000.00
£ 35,885.11	£ 39,445.37	£ 43,020.61	£ 46,654.03	£ 50,389.59	£ 54,272.37
£ 35,885.11	£ 39,445.37	£ 43,020.61	£ 46,654.03	£ 50,389.59	£ 54,272.37

Month 21 Month 22 Month 23 Month 24 Month 25 Month 26

2,152	2,289	2,439	2,605	2,788	3,283
13,988	15,057	16,184	17,380	18,655	20,292

3.00	3.00	3.00	3.00	3.00	3.00
13.00	13.00	13.00	13.00	13.00	13.00

1.909751072 1.929380495 1.944678921 1.95538987 1.961375967 1.938445147

181,848.70	195,734.65	210,388.38	225,936.62	242,513.89	263,799.28
4,546.22	4,893.37	5,259.71	5,648.42	6,062.85	6,594.98
177,302	190,841	205,129	220,288	236,451	257,204
40,071	43,575	47,208	50,976	54,884	59,003
137,231	147,267	157,920	169,312	181,567	198,201
20,585	22,090	23,688	25,397	27,235	29,730
116,646	125,177	134,232	143,915	154,332	168,471

£ 5,000.00	£ 5,000.00	£ 5,000.00	£ 5,000.00	£ 5,000.00	£ 5,000.00
£ 58,323.20	£ 62,588.34	£ 67,116.19	£ 71,957.58	£ 77,166.01	£ 84,235.50
£ 58,323.20	£ 62,588.34	£ 67,116.19	£ 71,957.58	£ 77,166.01	£ 84,235.50

Month 27 Month 28 Month 29 Month 30 Month 31 Month 32

3,508	3,754	4,025	4,321	4,645	4,999
22,015	23,837	25,772	27,836	30,045	32,416

3.00	3.00	3.00	3.00	3.00	3.00
13.00	13.00	13.00	13.00	13.00	13.00

1.917427021 1.897165255 1.876830224 1.855840075 1.833804215 1.810481317

286,193.32	309,874.98	335,032.60	361,864.80	390,581.26	421,403.61
7,154.83	7,746.87	8,375.82	9,046.62	9,764.53	10,535.09
279,038	302,128	326,657	352,818	380,817	410,869
63,318	67,833	72,554	77,488	82,644	88,032
215,721	234,295	254,103	275,330	298,173	322,837
32,358	35,144	38,115	41,300	44,726	48,425
183,363	199,151	215,988	234,031	253,447	274,411

£ 5,000.00	£ 5,000.00	£ 5,000.00	£ 5,000.00	£ 5,000.00	£ 5,000.00
£ 91,681.27	£ 99,575.51	£ 107,993.78	£ 117,015.30	£ 126,723.33	£ 137,205.55
£ 91,681.27	£ 99,575.51	£ 107,993.78	£ 117,015.30	£ 126,723.33	£ 137,205.55

Month 33	Month 34	Month 35	Month 36	
5,386	5,808	6,268	6,769	
34,967	37,717	40,686	43,896	7.50%
3.00	3.00	3.00	3.00	
13.00	13.00	13.00	13.00	£4.50
1.785746984	1.759568067	1.731981726	1.703078077	
454,566.28	490,317.38	528,919.58	570,650.95	
11,364.16	12,257.93	13,222.99	14,266.27	
443,202	478,059	515,697	556,385	
93,662	99,548	105,701	112,138	
349,540	378,512	409,995	444,247	
52,431	56,777	61,499	66,637	
297,109	321,735	348,496	377,610	4,424,375
£ 5,000.00	£ 5,000.00	£ 5,000.00	£ 5,000.00	
£ 148,554.40	£ 160,867.49	£ 174,247.94	£ 188,804.81	
£ 148,554.40	£ 160,867.49	£ 174,247.94	£ 188,804.81	

Publishing Partners - Money Players

Total Partner Paying Players with Account

Total Partner Paying Players net of churn (7.5%)

Player Spend

Net Average weekly spend

Average monthly spend

Revenue

Monthly deposits into the game

Less 2.5% processing, fraud

Monthly Expenditure on Pledges

Dividend Payout (estimate) @ 20p

Gross Gambling Yield

Betting Tax (15%)

Gross Cash Contribution

		Month 1	Month 2
Mirror Partnership - Money Players			
Total Paying Players with Account			363
Total Partner Paying Players net of churn (7.5%)	7.50%		336
Player Spend			
Net Average weekly spend			3.00
Average monthly spend			13.00
Dividend Payout Ratio			0.56296296
Revenue			
Monthly deposits into the game		-	4,362.82
Less 2.5% processing, fraud	2.5%	-	109.07
Monthly Expenditure on Futures			4,254
Dividend Payout (estimate) @ 20p		-	283
Gross Gambling Yield			3,970
Betting Tax (15%)	15%		595.55
Gross Cash Contribution		-	3,375
Minimum Revenue Guarantee			£ 5,000.00
Revenue Share			£ 1,687.40
Partner Payment			£ 5,000.00

Year 1 Partner Revenue	£ 133,059.92
Year 2 Partner Revenue	£ 410,626.56
Year 3 Partner Revenue	£ 985,342.30

	Month 3	Month 4	Month 5	Month 6	Month 7	Month 8
	440	587	607	628	651	676
	718	1,207	1,678	2,133	2,575	3,007
	3.00	3.00	3.00	3.00	3.00	3.00
	13.00	13.00	13.00	13.00	13.00	13.00
	0.755446593	0.838804735	0.960874347	1.002490313	1.069411438	1.162767335
	9,330.28	15,694.49	21,815.44	27,730.81	33,477.89	39,093.93
	233.26	392.36	545.39	693.27	836.95	977.35
	9,097	15,302	21,270	27,038	32,641	38,117
	813	1,519	2,419	3,208	4,131	5,245
	8,284	13,783	18,851	23,830	28,510	32,872
	1,243	2,067	2,828	3,574	4,276	4,931
	7,041	11,716	16,024	20,255	24,233	27,941
£	5,000.00	£ 5,000.00	£ 5,000.00	£ 5,000.00	£ 5,000.00	£ 5,000.00
£	3,520.59	£ 5,857.83	£ 8,011.83	£ 10,127.69	£ 12,116.74	£ 13,970.40
£	5,000.00	£ 5,857.83	£ 8,011.83	£ 10,127.69	£ 12,116.74	£ 13,970.40

Month 9 Month 10 Month 11 Month 12 Month 13 Month 14

703	732	764	800	839	962
3,432	3,852	4,270	4,690	5,114	5,620

3.00	3.00	3.00	3.00	3.00	3.00
13.00	13.00	13.00	13.00	13.00	13.00

1.260099164 1.349820759 1.437185262 1.520083411 1.597208711 1.647504998

44,616.42	50,076.21	55,512.56	60,965.99	66,478.61	73,055.95
1,115.41	1,251.91	1,387.81	1,524.15	1,661.97	1,826.40
43,501	48,824	54,125	59,442	64,817	71,230
6,487	7,799	9,206	10,693	12,252	13,888
37,014	41,025	44,919	48,749	52,565	57,342
5,552	6,154	6,738	7,312	7,885	8,601
31,462	34,871	38,181	41,436	44,680	48,741

£ 5,000.00	£ 5,000.00	£ 5,000.00	£ 5,000.00	£ 5,000.00	£ 5,000.00
£ 15,730.93	£ 17,435.63	£ 19,090.64	£ 20,718.22	£ 22,340.16	£ 24,370.29
£ 15,730.93	£ 17,435.63	£ 19,090.64	£ 20,718.22	£ 22,340.16	£ 24,370.29

Month 15 Month 16 Month 17 Month 18 Month 19 Month 20

1,006	1,054	1,108	1,167	1,232	1,304
6,128	6,644	7,170	7,712	8,273	8,859

3.00	3.00	3.00	3.00	3.00	3.00
13.00	13.00	13.00	13.00	13.00	13.00

1.697292148 1.744534869 1.787858084 1.826311264 1.859235276 1.886184245

79,669.07	86,369.92	93,212.44	100,252.95	107,550.53	115,167.40
1,991.73	2,159.25	2,330.31	2,506.32	2,688.76	2,879.19
77,677	84,211	90,882	97,747	104,862	112,288
15,603	17,386	19,229	21,126	23,073	25,065
62,075	66,825	71,653	76,620	81,789	87,224
9,311	10,024	10,748	11,493	12,268	13,084
52,764	56,801	60,905	65,127	69,521	74,140

£ 5,000.00	£ 5,000.00	£ 5,000.00	£ 5,000.00	£ 5,000.00	£ 5,000.00
£ 26,381.81	£ 28,400.65	£ 30,452.61	£ 32,563.71	£ 34,760.43	£ 37,070.02
£ 26,381.81	£ 28,400.65	£ 30,452.61	£ 32,563.71	£ 34,760.43	£ 37,070.02

Month 21 Month 22 Month 23 Month 24 Month 25 Month 26

1,384	1,471	1,568	1,675	1,792	2,110
9,475	10,125	10,816	11,554	12,345	13,371

3.00	3.00	3.00	3.00	3.00	3.00
13.00	13.00	13.00	13.00	13.00	13.00

1.909751072 1.929380495 1.944678921 1.95538987 1.961375967 1.938445147

123,169.33	131,626.02	140,611.53	150,204.69	160,489.53	173,828.91
3,079.23	3,290.65	3,515.29	3,755.12	4,012.24	4,345.72
120,090	128,335	137,096	146,450	156,477	169,483
27,141	29,303	31,551	33,889	36,321	38,880
92,949	99,033	105,545	112,560	120,156	130,603
13,942	14,855	15,832	16,884	18,023	19,591
79,007	84,178	89,713	95,676	102,133	111,013

£ 5,000.00	£ 5,000.00	£ 5,000.00	£ 5,000.00	£ 5,000.00	£ 5,000.00
£ 39,503.33	£ 42,088.89	£ 44,856.62	£ 47,838.04	£ 51,066.51	£ 55,506.46
£ 39,503.33	£ 42,088.89	£ 44,856.62	£ 47,838.04	£ 51,066.51	£ 55,506.46

Month 27 Month 28 Month 29 Month 30 Month 31 Month 32

2,255	2,414	2,587	2,778	2,986	3,214
14,454	15,603	16,826	18,133	19,536	21,043

3.00	3.00	3.00	3.00	3.00	3.00
13.00	13.00	13.00	13.00	13.00	13.00

1.917427021 1.897165255 1.876830224 1.855840075 1.833804215 1.810481317

187,906.80	202,836.32	218,736.76	235,734.13	253,961.70	273,560.54
4,697.67	5,070.91	5,468.42	5,893.35	6,349.04	6,839.01
183,209	197,765	213,268	229,841	247,613	266,722
41,573	44,402	47,369	50,479	53,736	57,147
141,636	153,364	165,899	179,362	193,876	209,574
21,245	23,005	24,885	26,904	29,081	31,436
120,391	130,359	141,014	152,457	164,795	178,138

£ 5,000.00	£ 5,000.00	£ 5,000.00	£ 5,000.00	£ 5,000.00	£ 5,000.00
£ 60,195.44	£ 65,179.61	£ 70,507.20	£ 76,228.75	£ 82,397.38	£ 89,069.06
£ 60,195.44	£ 65,179.61	£ 70,507.20	£ 76,228.75	£ 82,397.38	£ 89,069.06

Month 33	Month 34	Month 35	Month 36	
3,462	3,734	4,030	4,352	
22,668	24,421	26,317	28,369	7.50%
3.00	3.00	3.00	3.00	£4.50
13.00	13.00	13.00	13.00	
1.785746984	1.759568067	1.731981726	1.703078077	
294,680.03	317,478.47	342,123.58	368,793.11	
7,367.00	7,936.96	8,553.09	9,219.83	
287,313	309,542	333,570	359,573	
60,718	64,457	68,371	72,471	
226,595	245,085	265,199	287,102	
33,989	36,763	39,780	43,065	
192,606	208,322	225,419	244,037	3,048,474
£ 5,000.00	£ 5,000.00	£ 5,000.00	£ 5,000.00	
£ 96,302.82	£ 104,161.03	£ 112,709.63	£ 122,018.40	
£ 96,302.82	£ 104,161.03	£ 112,709.63	£ 122,018.40	

Publishing Partners - Money Players

Total Partner Paying Players with Account

Total Partner Paying Players net of churn (7.5%)

Player Spend

Net Average weekly spend

Average monthly spend

Revenue

Monthly deposits into the game

Less 2.5% processing, fraud

Monthly Expenditure on Pledges

Dividend Payout (estimate) @ 20p

Gross Gambling Yield

Betting Tax (15%)

Gross Cash Contribution

MONTH	FIXED NO. OF Footballer s	New Players	1st Month % Churn	Players net of 1st Month Churn	M2 onwards Churn	Players net of M2 onwards Churn	Total retained Players	Depositing Retained Players
1	200	0	7.50%	0			0	0
2	208	1,169	7.50%	1,081	7.50%	0	1,081	1,081
3	216	1,419	7.50%	1,312	7.50%	1,000	2,313	2,313
4	224	2,350	7.50%	2,174	7.50%	2,139	4,313	4,313
5	232	2,428	7.50%	2,246	7.50%	3,989	6,235	6,235
6	240	3,489	7.50%	3,227	7.50%	5,767	8,994	8,994
7	248	3,616	7.50%	3,345	7.50%	8,320	11,665	11,665
8	250	3,755	7.50%	3,473	7.50%	10,790	14,263	14,263
9	250	3,906	7.50%	3,613	7.50%	13,193	16,806	16,806
10	250	4,068	7.50%	3,763	7.50%	15,546	19,309	19,309
11	250	4,247	7.50%	3,928	7.50%	17,861	21,789	21,789
12	250	4,443	7.50%	4,110	7.50%	20,155	24,265	24,265
13	250	4,659	7.50%	4,310	7.50%	22,445	26,755	26,755
14	250	5,342	7.50%	4,942	7.50%	24,748	29,690	29,690
15	250	5,587	7.50%	5,168	7.50%	27,463	32,630	32,630
16	250	5,856	7.50%	5,417	7.50%	30,183	35,600	35,600
17	250	6,154	7.50%	5,692	7.50%	32,930	38,623	38,623
18	250	6,483	7.50%	5,996	7.50%	35,726	41,722	41,722
19	250	6,845	7.50%	6,332	7.50%	38,593	44,925	44,925
20	250	7,246	7.50%	6,702	7.50%	41,556	48,258	48,258
21	250	7,687	7.50%	7,111	7.50%	44,639	51,749	51,749
22	250	8,175	7.50%	7,562	7.50%	47,868	55,430	55,430
23	250	8,712	7.50%	8,059	7.50%	51,273	59,331	59,331
24	250	9,304	7.50%	8,606	7.50%	54,882	63,488	63,488
25	250	9,956	7.50%	9,209	7.50%	58,726	67,936	67,936
26	250	11,724	7.50%	10,844	7.50%	62,841	73,685	73,685
27	250	12,527	7.50%	11,588	7.50%	68,159	79,746	79,746
28	250	13,408	7.50%	12,403	7.50%	73,765	86,168	86,168
29	250	14,374	7.50%	13,296	7.50%	79,706	93,002	93,002
30	250	15,432	7.50%	14,275	7.50%	86,027	100,301	100,301
31	250	16,589	7.50%	15,345	7.50%	92,779	108,124	108,124
32	250	17,854	7.50%	16,515	7.50%	100,015	116,530	116,530
33	250	19,236	7.50%	17,793	7.50%	107,790	125,584	125,584
34	250	20,744	7.50%	19,188	7.50%	116,165	135,353	135,353
35	250	22,387	7.50%	20,708	7.50%	125,201	145,909	145,909
36	250	24,176	7.50%	22,363	7.50%	134,966	157,328	157,328

<i>Net Average weekly spend</i>	<i>Average monthly spend</i>	<i>Monthly Deposits Into Game</i>	<i>Monthly Expenditure on Futures</i>	<i>Cumulative Expenditure on Bet up to Month X</i>	<i>Average Future Price</i>	<i>New Futures Issued</i>	<i>Total No. of Futures</i>
-	-	-	-		£1.00	-	0
£3.00	£13.00	£14,058	£13,707	£13,707	£1.08	13,017	13,017
£3.00	£13.00	£30,064	£29,313	£43,019	£1.17	25,775	38,792
£3.00	£13.00	£56,065	£54,664	£97,683	£1.26	44,506	83,298
£3.00	£13.00	£81,053	£79,026	£176,709	£1.36	59,576	142,874
£3.00	£13.00	£116,927	£114,003	£290,713	£1.47	79,578	222,453
£3.00	£13.00	£151,640	£147,849	£438,561	£1.59	95,559	318,012
£3.00	£13.00	£185,416	£180,781	£619,342	£1.71	108,189	426,200
£3.00	£13.00	£218,480	£213,018	£832,360	£1.85	118,038	544,238
£3.00	£13.00	£251,016	£244,741	£1,077,100	£2.00	125,570	669,808
£3.00	£13.00	£283,257	£276,175	£1,353,276	£2.10	134,951	804,760
£3.00	£13.00	£315,440	£307,554	£1,660,829	£2.20	143,128	947,887
£3.00	£13.00	£347,810	£339,115		£2.31	150,300	1,098,188
£3.00	£13.00	£385,964	£376,315		£2.43	158,846	1,257,034
£3.00	£13.00	£424,196	£413,592		£2.55	166,267	1,423,301
£3.00	£13.00	£462,804	£451,234		£2.68	172,762	1,596,063
£3.00	£13.00	£502,095	£489,543		£2.81	178,504	1,774,566
£3.00	£13.00	£542,391	£528,831		£2.95	183,647	1,958,213
£3.00	£13.00	£584,025	£569,425		£3.10	188,328	2,146,541
£3.00	£13.00	£627,352	£611,668		£3.26	192,666	2,339,207
£3.00	£13.00	£672,742	£655,924		£3.35	200,588	2,539,795
£3.00	£13.00	£720,589	£702,574		£3.45	208,596	2,748,391
£3.00	£13.00	£771,308	£752,026		£3.56	216,775	2,965,166
£3.00	£13.00	£825,344	£804,710		£3.66	225,206	3,190,372
£3.00	£13.00	£883,166	£861,087		£3.77	233,964	3,424,336
£3.00	£13.00	£957,907	£933,959		£3.89	246,373	3,670,709
£3.00	£13.00	£1,036,703	£1,010,786		£4.00	258,873	3,929,582
£3.00	£13.00	£1,120,187	£1,092,182		£4.12	271,573	4,201,155
£3.00	£13.00	£1,209,024	£1,178,798		£4.25	284,573	4,485,728
£3.00	£13.00	£1,303,917	£1,271,319		£4.38	297,969	4,783,696
£3.00	£13.00	£1,405,610	£1,370,470		£4.51	311,852	5,095,549
£3.00	£13.00	£1,514,889	£1,477,017		£4.64	326,308	5,421,856
£3.00	£13.00	£1,632,587	£1,591,772		£4.78	341,417	5,763,274
£3.00	£13.00	£1,759,584	£1,715,594		£4.93	357,258	6,120,532
£3.00	£13.00	£1,896,815	£1,849,395		£5.07	373,904	6,494,435
£3.00	£13.00	£2,045,269	£1,994,138		£5.23	391,425	6,885,860

(EX) DIV PAYOUT DURING NEXT MONTH					
(EX) DIV PAYOUT DURING MONTH X ASSUMING WE START NOW	% OF PAYOUT PER SHARE PER £1 INVESTED	Average Futures held per Footballer	Weighted Av Holdings (at 60%)	Weighted Average (at specified estimate)	Mthly Payout of Daily Div @ £0.20 (100% Payout, 60% overholding)
£0.350	35.00%	0	-	-	-
£0.01648	32.41%	63	100	100	609
£0.01595	30.01%	180	287	287	1,747
£0.01544	27.78%	372	595	595	3,618
£0.01495	25.73%	616	985	985	5,991
£0.01447	23.82%	927	1,483	1,483	9,017
£0.01401	22.06%	1,282	2,052	2,052	12,474
£0.01356	20.42%	1,705	2,728	2,728	16,584
£0.01312	18.91%	2,177	3,483	3,483	21,177
£0.01270	17.51%	2,679	4,287	4,287	26,064
£0.01230	16.67%	3,219	5,150	5,150	31,315
£0.01190	15.88%	3,792	6,066	6,066	36,884
£0.01152	15.12%	4,393	7,028	7,028	42,733
£0.01115	14.40%	5,028	8,045	8,045	48,914
£0.01080	13.72%	5,693	9,109	9,109	55,383
£0.01045	13.07%	6,384	10,215	10,215	62,106
£0.01012	12.44%	7,098	11,357	11,357	69,052
£0.00979	11.85%	7,833	12,533	12,533	76,198
£0.00948	11.29%	8,586	13,738	13,738	83,526
£0.00918	10.75%	9,357	14,971	14,971	91,023
£0.00888	10.44%	10,159	16,255	16,255	98,829
£0.00860	10.13%	10,994	17,590	17,590	106,945
£0.00832	9.84%	11,861	18,977	18,977	115,381
£0.00806	9.55%	12,761	20,418	20,418	124,144
£0.00780	9.27%	13,697	21,916	21,916	133,248
£0.00755	9.00%	14,683	23,493	23,493	142,835
£0.00731	8.74%	15,718	25,149	25,149	152,908
£0.00707	8.49%	16,805	26,887	26,887	163,475
£0.00685	8.24%	17,943	28,709	28,709	174,549
£0.00663	8.00%	19,135	30,616	30,616	186,143
£0.00642	7.77%	20,382	32,612	32,612	198,278
£0.00621	7.54%	21,687	34,700	34,700	210,975
£0.00601	7.32%	23,053	36,885	36,885	224,261
£0.00582	7.11%	24,482	39,171	39,171	238,162
£0.00563	6.90%	25,978	41,564	41,564	252,711
£0.00545	6.70%	27,543	44,070	44,070	267,943

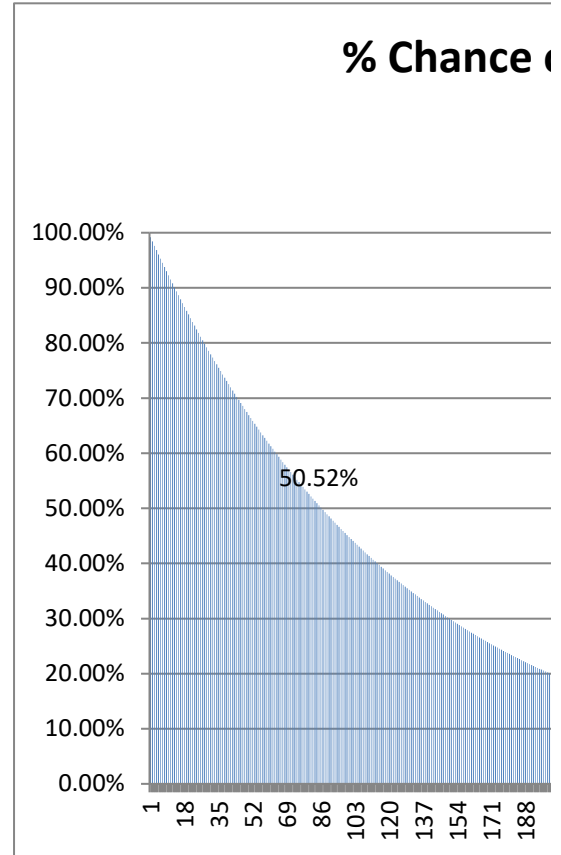
Cumulative Payout of Daily Div @ £0.20 (100%)	Year	Ratio Dividend Payout Per Player
	1	#VALUE! b
609	1	0.562962963
2,356	1	0.755446593
5,973	1	0.838804735
11,964	1	0.960874347
20,981	1	1.002490313
33,455	1	1.069411438
50,040	1	1.162767335
71,217	1	1.260099164
97,281	1	1.349820759
128,595	1	1.437185262
165,480	1	1.520083411
208,212	2	1.597208711
257,126	2	1.647504998
312,509	2	1.697292148
374,615	2	1.744534869
443,667	2	1.787858084
519,865	2	1.826311264
603,392	2	1.859235276
694,415	2	1.886184245
793,243	2	1.909751072
900,189	2	1.929380495
1,015,569	2	1.944678921
1,139,713	2	1.95538987
1,272,961	3	1.961375967
1,415,795	3	1.938445147
1,568,703	3	1.917427021
1,732,179	3	1.897165255
1,906,727	3	1.876830224
2,092,870	3	1.855840075
2,291,148	3	1.833804215
2,502,124	3	1.810481317
2,726,384	3	1.785746984
2,964,546	3	1.759568067
3,217,258	3	1.731981726
3,485,200	3	1.703078077

Each footballer has a 2/250 chance of being relegated each week assuming all footballers are equal
 Therefore, each has a 248/250 chance of staying each week.

Below is the chance of each footballer staying for at least x weeks using a simple formula.

In reality some of these footballers will have a significantly reduced chance of leaving each week and vice versa

0.992 248/250 %	Staying until at least Week	0.968 242/250 Staying until at least one month	0.99 198/200
99.20%	1	96.80%	99.00%
98.41%	2	93.70%	98.01%
97.62%	3	90.70%	97.03%
96.84%	4	87.80%	96.06%
96.06%	5	84.99%	95.10%
95.29%	6	82.27%	94.15%
94.53%	7	79.64%	93.21%
93.78%	8	77.09%	92.27%
93.03%	9	74.62%	91.35%
92.28%	10	72.24%	90.44%
91.54%	11	69.92%	89.53%
90.81%	12	67.69%	88.64%
90.08%	13	65.52%	87.75%
89.36%	14	63.42%	86.87%
88.65%	15	61.39%	86.01%
87.94%	16	59.43%	85.15%
87.24%	17	57.53%	84.29%
86.54%	18	55.69%	83.45%
85.85%	19	53.91%	82.62%
85.16%	20	52.18%	81.79%
84.48%	21	50.51%	80.97%
83.80%	22	48.89%	80.16%
83.13%	23	47.33%	79.36%
82.47%	24	45.82%	78.57%
81.81%	25	44.35%	77.78%
81.15%	26	42.93%	77.00%
80.50%	27	41.56%	76.23%
79.86%	28	40.23%	75.47%
79.22%	29	38.94%	74.72%
78.59%	30	37.69%	73.97%
77.96%	31	36.49%	73.23%
77.33%	32	35.32%	72.50%
76.72%	33	34.19%	71.77%
76.10%	34	33.09%	71.06%
75.49%	35	32.04%	70.34%
74.89%	36	31.01%	69.64%



74.29%	37	30.02%	68.94%
73.70%	38	29.06%	68.26%
73.11%	39	28.13%	67.57%
72.52%	40	27.23%	66.90%
71.94%	41	26.36%	66.23%
71.37%	42	25.51%	65.57%
70.79%	43	24.70%	64.91%
70.23%	44	23.91%	64.26%
69.67%	45	23.14%	63.62%
69.11%	46	22.40%	62.98%
68.56%	47	21.68%	62.35%
68.01%	48	20.99%	61.73%
67.46%	49	20.32%	61.11%
66.92%	50	19.67%	60.50%
66.39%	51	19.04%	59.90%
65.86%	52	18.43%	59.30%
65.33%	53	17.84%	58.70%
64.81%	54	17.27%	58.12%
64.29%	55	16.72%	57.54%
63.78%	56	16.18%	56.96%
63.27%	57	15.66%	56.39%
62.76%	58	15.16%	55.83%
62.26%	59	14.68%	55.27%
61.76%	60	14.21%	54.72%
61.26%	61	13.75%	54.17%
60.77%	62	13.31%	53.63%
60.29%	63	12.89%	53.09%
59.81%	64	12.47%	52.56%
59.33%	65	12.08%	52.03%
58.85%	66	11.69%	51.51%
58.38%	67	11.31%	51.00%
57.92%	68	10.95%	50.49%
57.45%	69	10.60%	49.98%
56.99%	70	10.26%	49.48%
56.54%	71	9.93%	48.99%
56.08%	72	9.62%	48.50%
55.64%	73	9.31%	48.01%
55.19%	74	9.01%	47.53%
54.75%	75	8.72%	47.06%
54.31%	76	8.44%	46.59%
53.88%	77	8.17%	46.12%
53.45%	78	7.91%	45.66%
53.02%	79	7.66%	45.20%
52.59%	80	7.41%	44.75%
52.17%	81	7.18%	44.30%
51.76%	82	6.95%	43.86%
51.34%	83	6.72%	43.42%

50.93%	84	6.51%	42.99%
50.52%	85	6.30%	42.56%
50.12%	86	6.10%	42.13%
49.72%	87	5.90%	41.71%
49.32%	88	5.72%	41.29%
48.93%	89	5.53%	40.88%
48.53%	90	5.36%	40.47%
48.15%	91	5.18%	40.07%
47.76%	92	5.02%	39.67%
47.38%	93	4.86%	39.27%
47.00%	94	4.70%	38.88%
46.62%	95	4.55%	38.49%
46.25%	96	4.41%	38.10%
45.88%	97	4.26%	37.72%
45.51%	98	4.13%	37.35%
45.15%	99	4.00%	36.97%
44.79%	100	3.87%	36.60%
44.43%	101	3.74%	36.24%
44.07%	102	3.62%	35.87%
43.72%	103	3.51%	35.52%
43.37%	104	3.40%	35.16%
43.03%	105	3.29%	34.81%
42.68%	106	3.18%	34.46%
42.34%	107	3.08%	34.12%
42.00%	108	2.98%	33.78%
41.67%	109	2.89%	33.44%
41.33%	110	2.79%	33.10%
41.00%	111	2.70%	32.77%
40.67%	112	2.62%	32.44%
40.35%	113	2.53%	32.12%
40.02%	114	2.45%	31.80%
39.70%	115	2.38%	31.48%
39.39%	116	2.30%	31.17%
39.07%	117	2.23%	30.85%
38.76%	118	2.15%	30.55%
38.45%	119	2.09%	30.24%
38.14%	120	2.02%	29.94%
37.84%	121	1.95%	29.64%
37.53%	122	1.89%	29.34%
37.23%	123	1.83%	29.05%
36.94%	124	1.77%	28.76%
36.64%	125	1.72%	28.47%
36.35%	126	1.66%	28.19%
36.06%	127	1.61%	27.90%
35.77%	128	1.56%	27.63%
35.48%	129	1.51%	27.35%
35.20%	130	1.46%	27.08%

34.92%	131	1.41%	26.80%
34.64%	132	1.37%	26.54%
34.36%	133	1.32%	26.27%
34.09%	134	1.28%	26.01%
33.81%	135	1.24%	25.75%
33.54%	136	1.20%	25.49%
33.27%	137	1.16%	25.24%
33.01%	138	1.12%	24.98%
32.74%	139	1.09%	24.73%
32.48%	140	1.05%	24.49%
32.22%	141	1.02%	24.24%
31.96%	142	0.99%	24.00%
31.71%	143	0.96%	23.76%
31.45%	144	0.92%	23.52%
31.20%	145	0.90%	23.29%
30.95%	146	0.87%	23.05%
30.71%	147	0.84%	22.82%
30.46%	148	0.81%	22.59%
30.22%	149	0.79%	22.37%
29.97%	150	0.76%	22.15%
29.73%	151	0.74%	21.92%
29.50%	152	0.71%	21.70%
29.26%	153	0.69%	21.49%
29.03%	154	0.67%	21.27%
28.79%	155	0.65%	21.06%
28.56%	156	0.63%	20.85%
28.34%	157	0.61%	20.64%
28.11%	158	0.59%	20.43%
27.88%	159	0.57%	20.23%
27.66%	160	0.55%	20.03%
27.44%	161	0.53%	19.83%
27.22%	162	0.52%	19.63%
27.00%	163	0.50%	19.43%
26.79%	164	0.48%	19.24%
26.57%	165	0.47%	19.05%
26.36%	166	0.45%	18.86%
26.15%	167	0.44%	18.67%
25.94%	168	0.42%	18.48%
25.73%	169	0.41%	18.30%
25.53%	170	0.40%	18.11%
25.32%	171	0.38%	17.93%
25.12%	172	0.37%	17.75%
24.92%	173	0.36%	17.57%
24.72%	174	0.35%	17.40%
24.52%	175	0.34%	17.22%
24.33%	176	0.33%	17.05%
24.13%	177	0.32%	16.88%

23.94%	178	0.31%	16.71%
23.75%	179	0.30%	16.55%
23.56%	180	0.29%	16.38%
23.37%	181	0.28%	16.22%
23.18%	182	0.27%	16.05%
23.00%	183	0.26%	15.89%
22.81%	184	0.25%	15.74%
22.63%	185	0.24%	15.58%
22.45%	186	0.24%	15.42%
22.27%	187	0.23%	15.27%
22.09%	188	0.22%	15.12%
21.91%	189	0.21%	14.96%
21.74%	190	0.21%	14.81%
21.56%	191	0.20%	14.67%
21.39%	192	0.19%	14.52%
21.22%	193	0.19%	14.37%
21.05%	194	0.18%	14.23%
20.88%	195	0.18%	14.09%
20.72%	196	0.17%	13.95%
20.55%	197	0.16%	13.81%
20.39%	198	0.16%	13.67%
20.22%	199	0.15%	13.53%
20.06%	200	0.15%	13.40%
19.90%	201	0.14%	13.26%
19.74%	202	0.14%	13.13%
19.58%	203	0.14%	13.00%
19.43%	204	0.13%	12.87%
19.27%	205	0.13%	12.74%
19.12%	206	0.12%	12.61%
18.96%	207	0.12%	12.49%
18.81%	208	0.12%	12.36%
18.66%	209	0.11%	12.24%
18.51%	210	0.11%	12.12%
18.36%	211	0.10%	12.00%
18.22%	212	0.10%	11.88%
18.07%	213	0.10%	11.76%
17.93%	214	0.09%	11.64%
17.78%	215	0.09%	11.52%
17.64%	216	0.09%	11.41%
17.50%	217	0.09%	11.29%
17.36%	218	0.08%	11.18%
17.22%	219	0.08%	11.07%
17.08%	220	0.08%	10.96%
16.95%	221	0.08%	10.85%
16.81%	222	0.07%	10.74%
16.68%	223	0.07%	10.63%
16.54%	224	0.07%	10.53%

16.41%	225	0.07%	10.42%
16.28%	226	0.06%	10.32%
16.15%	227	0.06%	10.21%
16.02%	228	0.06%	10.11%
15.89%	229	0.06%	10.01%
15.76%	230	0.06%	9.91%
15.64%	231	0.05%	9.81%
15.51%	232	0.05%	9.71%
15.39%	233	0.05%	9.62%
15.27%	234	0.05%	9.52%
15.14%	235	0.05%	9.42%
15.02%	236	0.05%	9.33%
14.90%	237	0.04%	9.24%
14.78%	238	0.04%	9.14%
14.67%	239	0.04%	9.05%
14.55%	240	0.04%	8.96%
14.43%	241	0.04%	8.87%
14.32%	242	0.04%	8.78%
14.20%	243	0.04%	8.70%
14.09%	244	0.04%	8.61%
13.98%	245	0.03%	8.52%
13.86%	246	0.03%	8.44%
13.75%	247	0.03%	8.35%
13.64%	248	0.03%	8.27%
13.53%	249	0.03%	8.19%
13.43%	250	0.03%	8.11%
13.32%	251	0.03%	8.02%
13.21%	252	0.03%	7.94%
13.11%	253	0.03%	7.87%
13.00%	254	0.03%	7.79%
12.90%	255	0.03%	7.71%
12.79%	256	0.02%	7.63%
12.69%	257	0.02%	7.56%
12.59%	258	0.02%	7.48%
12.49%	259	0.02%	7.40%
12.39%	260	0.02%	7.33%
12.29%	261	0.02%	7.26%
12.19%	262	0.02%	7.18%
12.09%	263	0.02%	7.11%
12.00%	264	0.02%	7.04%
11.90%	265	0.02%	6.97%
11.81%	266	0.02%	6.90%
11.71%	267	0.02%	6.83%
11.62%	268	0.02%	6.76%
11.52%	269	0.02%	6.70%
11.43%	270	0.02%	6.63%
11.34%	271	0.01%	6.56%

11.25%	272	0.01%	6.50%
11.16%	273	0.01%	6.43%
11.07%	274	0.01%	6.37%
10.98%	275	0.01%	6.30%
10.89%	276	0.01%	6.24%
10.81%	277	0.01%	6.18%
10.72%	278	0.01%	6.12%
10.64%	279	0.01%	6.06%
10.55%	280	0.01%	6.00%
10.47%	281	0.01%	5.94%
10.38%	282	0.01%	5.88%
10.30%	283	0.01%	5.82%
10.22%	284	0.01%	5.76%
10.14%	285	0.01%	5.70%
10.05%	286	0.01%	5.65%
9.97%	287	0.01%	5.59%
9.89%	288	0.01%	5.53%
9.81%	289	0.01%	5.48%
9.74%	290	0.01%	5.42%
9.66%	291	0.01%	5.37%
9.58%	292	0.01%	5.31%
9.50%	293	0.01%	5.26%
9.43%	294	0.01%	5.21%
9.35%	295	0.01%	5.16%
9.28%	296	0.01%	5.11%
9.20%	297	0.01%	5.05%
9.13%	298	0.01%	5.00%
9.06%	299	0.01%	4.95%
8.98%	300	0.01%	4.90%
8.91%	301	0.01%	4.86%
8.84%	302	0.01%	4.81%
8.77%	303	0.01%	4.76%
8.70%	304	0.01%	4.71%
8.63%	305	0.00%	4.66%
8.56%	306	0.00%	4.62%
8.49%	307	0.00%	4.57%
8.43%	308	0.00%	4.53%
8.36%	309	0.00%	4.48%
8.29%	310	0.00%	4.44%
8.22%	311	0.00%	4.39%
8.16%	312	0.00%	4.35%
8.09%	313	0.00%	4.30%
8.03%	314	0.00%	4.26%
7.96%	315	0.00%	4.22%
7.90%	316	0.00%	4.18%
7.84%	317	0.00%	4.13%
7.78%	318	0.00%	4.09%

7.71%	319	0.00%	4.05%
7.65%	320	0.00%	4.01%
7.59%	321	0.00%	3.97%
7.53%	322	0.00%	3.93%
7.47%	323	0.00%	3.89%
7.41%	324	0.00%	3.85%
7.35%	325	0.00%	3.81%
7.29%	326	0.00%	3.78%
7.23%	327		3.74%
7.18%	328		3.70%
7.12%	329		3.66%
7.06%	330		3.63%
7.00%	331		3.59%
6.95%	332		3.56%
6.89%	333		3.52%
6.84%	334		3.48%
6.78%	335		3.45%
6.73%	336		3.42%
6.67%	337		3.38%
6.62%	338		3.35%
6.57%	339		3.31%
6.52%	340		3.28%
6.46%	341		3.25%
6.41%	342		3.22%
6.36%	343		3.18%
6.31%	344		3.15%
6.26%	345		3.12%
6.21%	346		3.09%
6.16%	347		3.06%
6.11%	348		3.03%
6.06%	349		3.00%
6.01%	350		2.97%
5.96%	351		2.94%
5.92%	352		2.91%
5.87%	353		2.88%
5.82%	354		2.85%
5.78%	355		2.82%
5.73%	356		2.79%
5.68%	357		2.77%
5.64%	358		2.74%
5.59%	359		2.71%
5.55%	360		2.68%
5.50%	361		2.66%
5.46%	362		2.63%
5.42%	363		2.60%
5.37%	364		2.58%
5.33%	365		2.55%

5.29%	366	2.53%
5.25%	367	2.50%
5.20%	368	2.48%
5.16%	369	2.45%
5.12%	370	2.43%
5.08%	371	2.40%
5.04%	372	2.38%
5.00%	373	2.35%
4.96%	374	2.33%
4.92%	375	2.31%
4.88%	376	2.28%
4.84%	377	2.26%
4.80%	378	2.24%
4.76%	379	2.22%
4.73%	380	2.19%
4.69%	381	2.17%
4.65%	382	2.15%
4.61%	383	2.13%
4.58%	384	2.11%
4.54%	385	2.09%
4.50%	386	2.07%
4.47%	387	2.05%
4.43%	388	2.03%
4.40%	389	2.00%
4.36%	390	1.98%
4.33%	391	1.96%
4.29%	392	1.95%
4.26%	393	1.93%
4.22%	394	1.91%
4.19%	395	1.89%
4.16%	396	1.87%
4.12%	397	1.85%
4.09%	398	1.83%
4.06%	399	1.81%
4.02%	400	1.80%
3.99%	401	1.78%
3.96%	402	1.76%
3.93%	403	1.74%
3.90%	404	1.72%
3.87%	405	1.71%
3.83%	406	1.69%
3.80%	407	1.67%
3.77%	408	1.66%
3.74%	409	1.64%
3.71%	410	1.62%
3.68%	411	1.61%
3.65%	412	1.59%

3.63%	413	1.58%
3.60%	414	1.56%
3.57%	415	1.54%
3.54%	416	1.53%
3.51%	417	1.51%
3.48%	418	1.50%
3.45%	419	1.48%
3.43%	420	1.47%
3.40%	421	1.45%
3.37%	422	1.44%
3.35%	423	1.42%
3.32%	424	1.41%
3.29%	425	1.40%
3.27%	426	1.38%
3.24%	427	1.37%
3.21%	428	1.35%
3.19%	429	1.34%
3.16%	430	1.33%
3.14%	431	1.31%
3.11%	432	1.30%
3.09%	433	1.29%
3.06%	434	1.28%
3.04%	435	1.26%
3.01%	436	1.25%
2.99%	437	1.24%
2.97%	438	1.23%
2.94%	439	1.21%
2.92%	440	1.20%
2.89%	441	1.19%
2.87%	442	1.18%
2.85%	443	1.17%
2.83%	444	1.15%
2.80%	445	1.14%
2.78%	446	1.13%
2.76%	447	1.12%
2.74%	448	1.11%
2.71%	449	1.10%
2.69%	450	1.09%
2.67%	451	1.08%
2.65%	452	1.06%
2.63%	453	1.05%
2.61%	454	1.04%
2.59%	455	1.03%
2.57%	456	1.02%
2.55%	457	1.01%
2.53%	458	1.00%
2.51%	459	0.99%

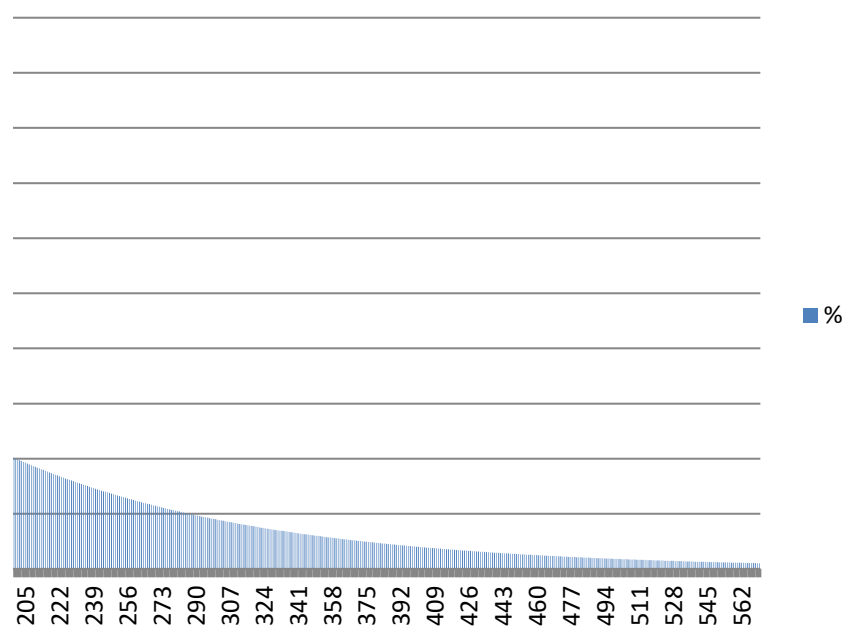
2.49%	460	0.98%
2.47%	461	0.97%
2.45%	462	0.96%
2.43%	463	0.95%
2.41%	464	0.94%
2.39%	465	0.93%
2.37%	466	0.92%
2.35%	467	0.92%
2.33%	468	0.91%
2.31%	469	0.90%
2.29%	470	0.89%
2.28%	471	0.88%
2.26%	472	0.87%
2.24%	473	0.86%
2.22%	474	0.85%
2.20%	475	0.84%
2.19%	476	0.84%
2.17%	477	0.83%
2.15%	478	0.82%
2.13%	479	0.81%
2.12%	480	0.80%
2.10%	481	0.80%
2.08%	482	0.79%
2.07%	483	0.78%
2.05%	484	0.77%
2.03%	485	0.76%
2.02%	486	0.76%
2.00%	487	0.75%
1.98%	488	0.74%
1.97%	489	0.73%
1.95%	490	0.73%
1.94%	491	0.72%
1.92%	492	0.71%
1.91%	493	0.70%
1.89%	494	0.70%
1.88%	495	0.69%
1.86%	496	0.68%
1.85%	497	0.68%
1.83%	498	0.67%
1.82%	499	0.66%
1.80%	500	0.66%
1.79%	501	0.65%
1.77%	502	0.64%
1.76%	503	0.64%
1.75%	504	0.63%
1.73%	505	0.62%
1.72%	506	0.62%

1.70%	507	0.61%
1.69%	508	0.61%
1.68%	509	0.60%
1.66%	510	0.59%
1.65%	511	0.59%
1.64%	512	0.58%
1.62%	513	0.58%
1.61%	514	0.57%
1.60%	515	0.57%
1.58%	516	0.56%
1.57%	517	0.55%
1.56%	518	0.55%
1.55%	519	0.54%
1.53%	520	0.54%
1.52%	521	0.53%
1.51%	522	0.53%
1.50%	523	0.52%
1.49%	524	0.52%
1.47%	525	0.51%
1.46%	526	0.51%
1.45%	527	0.50%
1.44%	528	0.50%
1.43%	529	0.49%
1.42%	530	0.49%
1.41%	531	0.48%
1.39%	532	0.48%
1.38%	533	0.47%
1.37%	534	0.47%
1.36%	535	0.46%
1.35%	536	0.46%
1.34%	537	0.45%
1.33%	538	0.45%
1.32%	539	0.44%
1.31%	540	0.44%
1.30%	541	0.44%
1.29%	542	0.43%
1.28%	543	0.43%
1.27%	544	0.42%
1.26%	545	0.42%
1.25%	546	0.41%
1.24%	547	0.41%
1.23%	548	0.41%
1.22%	549	0.40%
1.21%	550	0.40%
1.20%	551	0.39%
1.19%	552	0.39%
1.18%	553	0.39%

1.17%	554	0.38%
1.16%	555	0.38%
1.15%	556	0.37%
1.14%	557	0.37%
1.13%	558	0.37%
1.12%	559	0.36%
1.11%	560	0.36%
1.10%	561	0.36%
1.10%	562	0.35%
1.09%	563	0.35%
1.08%	564	0.35%
1.07%	565	0.34%
1.06%	566	0.34%
1.05%	567	0.34%
1.04%	568	0.33%
1.04%	569	0.33%
1.03%	570	0.33%
1.02%	571	0.32%
1.01%	572	0.32%
1.00%	573	0.32%
0.99%	574	0.31%
0.99%	575	0.31%
0.98%	576	0.31%
0.97%	577	0.30%
0.96%	578	0.30%
0.96%	579	0.30%
0.95%	580	0.29%
0.94%	581	0.29%
0.93%	582	0.29%
0.93%	583	0.29%
0.92%	584	0.28%
0.91%	585	0.28%
0.90%	586	0.28%
0.90%	587	0.27%
0.89%	588	0.27%
0.88%	589	0.27%
0.87%	590	0.27%
0.87%	591	0.26%
0.86%	592	0.26%
0.85%	593	0.26%
0.85%	594	0.26%
0.84%	595	0.25%
0.83%	596	0.25%
0.83%	597	0.25%
0.82%	598	0.25%
0.81%	599	0.24%
0.81%	600	0.24%

0.80%	601	0.24%
0.79%	602	0.24%
0.79%	603	0.23%
0.78%	604	0.23%
0.78%	605	0.23%
0.77%	606	0.23%
0.76%	607	0.22%
0.76%	608	0.22%
0.75%	609	0.22%
0.74%	610	0.22%
0.74%	611	0.22%
0.73%	612	0.21%
0.73%	613	0.21%
0.72%	614	0.21%
0.72%	615	0.21%
0.71%	616	0.20%
0.70%	617	0.20%
0.70%	618	0.20%
0.69%	619	0.20%
0.69%	620	0.20%
0.68%	621	0.19%
0.68%	622	0.19%
0.67%	623	0.19%
0.67%	624	0.19%
0.66%	625	0.19%
0.66%	626	0.19%
0.65%	627	0.18%
0.64%	628	0.18%
0.64%	629	0.18%
0.63%	630	0.18%
0.63%	631	0.18%
0.62%	632	0.17%
0.62%	633	0.17%
0.61%	634	0.17%
0.61%	635	0.17%
0.60%	636	0.17%
0.60%	637	0.17%
0.59%	638	0.16%
0.59%	639	0.16%
0.59%	640	0.16%
0.58%	641	0.16%
0.58%	642	0.16%
0.57%	643	0.16%
0.57%	644	0.15%

of the theoretically average footballer staying



242
250
0.968