

# Inspection Report

---

## Asset:

Lattice Cell Tower. Skyvue Solutions

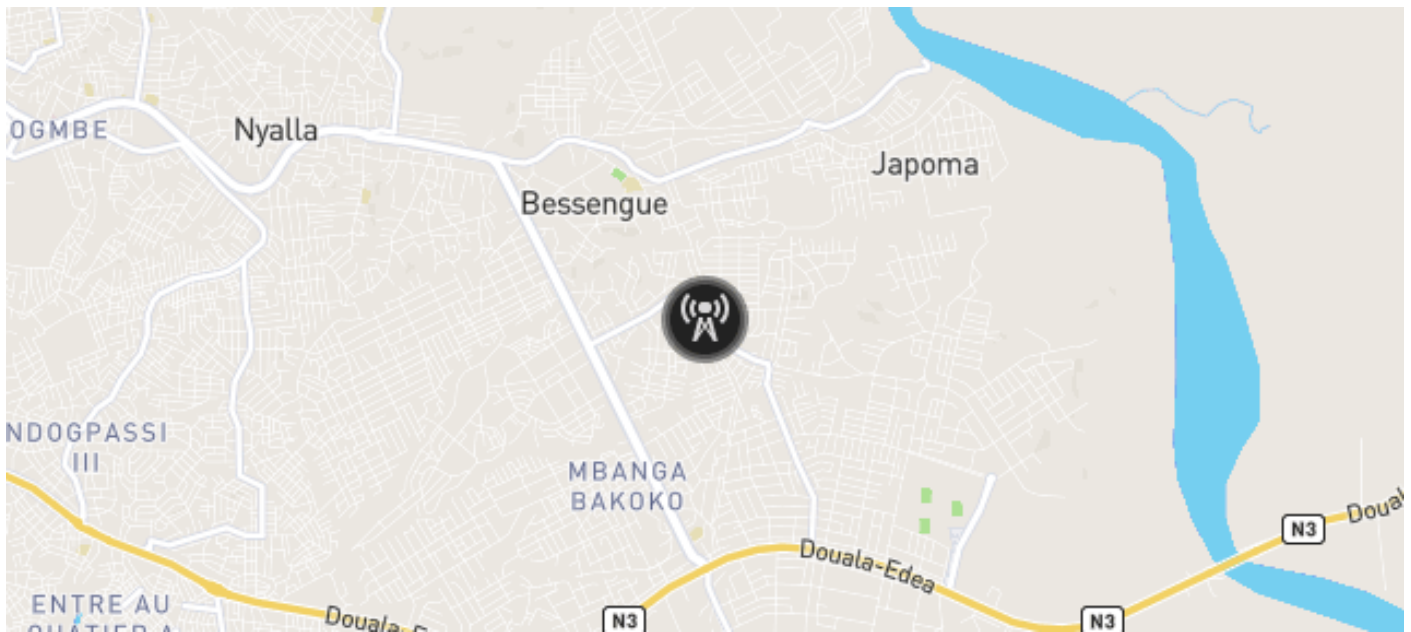
## Reported by:

SkyVue Solutions

## Contents

Overview	2
Annotations	3
Inventory	29

# Overview



## Lattice Cell Tower. Skyvue Solutions

Type: Cell tower

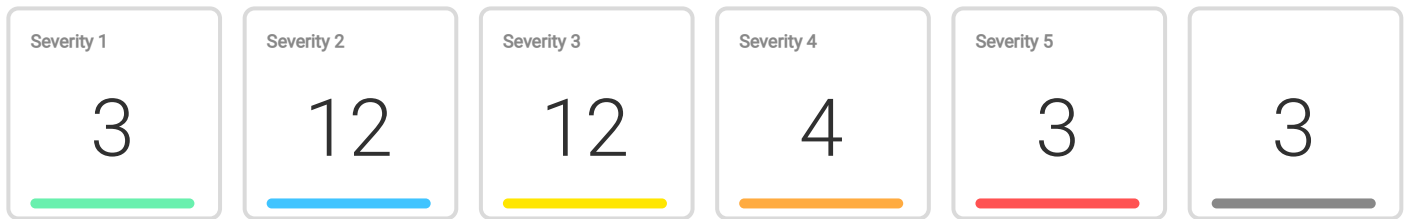
Position: 4.02012900, 9.80536800

Tower height: 37.75 m

Inspection date: September 17th, 2020 17:09 CEST

# Annotations

Total amount: 37



ID	Annotation type	Severity	Description	Page
38	Bird nest	1	Bird nest to remove	<a href="#">5</a>
22	Rust	2	Rusted supports and screws	<a href="#">6</a>
51	Uncategorised	3	Rusted supports and screws	<a href="#">7</a>
61	Uncategorised	3	Antenna to be cleaned	<a href="#">8</a>
41	Rust	3	Rusted support and screws	<a href="#">9</a>
42	Uncategorised	2	Rusted support and screws	<a href="#">9</a>
43	Rust	2	Rusted support and screws	<a href="#">10</a>
64	Uncategorised	0	Rust	<a href="#">10</a>
62	Uncategorised	3	Rusted support and screws	<a href="#">11</a>
35	Rust	2	Rusted support, bar and screws	<a href="#">12</a>
18	Rust	2	Rusted bar and screws	<a href="#">13</a>
36	Uncategorised	4	Equipment to be cleaned	<a href="#">14</a>
20	Rust	2	Rusted screws	<a href="#">15</a>
21	Rust	2	Rusted screws	<a href="#">15</a>
34	Rust	3	Rusted screw	<a href="#">16</a>
31	Rust	2	Rusted screw	<a href="#">16</a>
33	Uncategorised	0		<a href="#">17</a>
8	Uncategorised	0		<a href="#">18</a>
16	Rust	3	Rusted support and screws	<a href="#">19</a>
63	Uncategorised	3	Rusted antenna	<a href="#">20</a>

48	Uncategorised	4	Rusted supports and screws	<a href="#">21</a>
49	Uncategorised	4	Rusted antenna support	<a href="#">22</a>
44	Rust	3	Rusted support and screws	<a href="#">22</a>
47	Uncategorised	1	Screw to tighten	<a href="#">22</a>
57	Uncategorised	5	Rusted screws and support	<a href="#">23</a>
59	Rust	5	Rust screw	<a href="#">23</a>
60	Uncategorised	5	Rusted screw	<a href="#">24</a>
52	Rust	3	Rusted screws	<a href="#">24</a>
56	Rust	3	Rusted screws	<a href="#">24</a>
30	Uncategorised	3	Rainwater that stagnates and may seep in	<a href="#">25</a>
24	Uncategorised	2	Deformed roof and stagnant water	<a href="#">25</a>
27	Uncategorised	2	Moldy and rusted tower base concrete	<a href="#">26</a>
28	Rust	2	Moldy and rusted base concrete	<a href="#">26</a>
29	Uncategorised	1	Waste to be removed	<a href="#">26</a>
10	Rust	3	Rusted equipment with stagnant water on top	<a href="#">27</a>
15	Uncategorised	2	Molded and rusted tower base concrete	<a href="#">27</a>
37	Uncategorised	4	Stagnant water close to electric cables	<a href="#">28</a>



**DJI\_0389.JPG**

**Annotations: 1**

**Position:**

4.02007667,

9.80551056

**Altitude:** 47.111 m

**Yaw:** -87.40°



### **Annotation 38**

**Annotation type:** Bird nest

**Severity level:** 1

**Description:** Bird nest to remove



**DJI\_0391.JPG**

**Annotations: 1**

**Position:**

4.02006553,

9.80551108

**Altitude: 47.111 m**

**Yaw: -89.00°**



### **Annotation 22**

**Annotation type: Rust**

**Severity level: 2**

**Description: Rusted supports and screws**



**DJI\_0417.JPG**

**Annotations: 1**

**Position:**

4.01999872,

9.80541042

**Altitude: 47.111 m**

**Yaw: +14.70°**

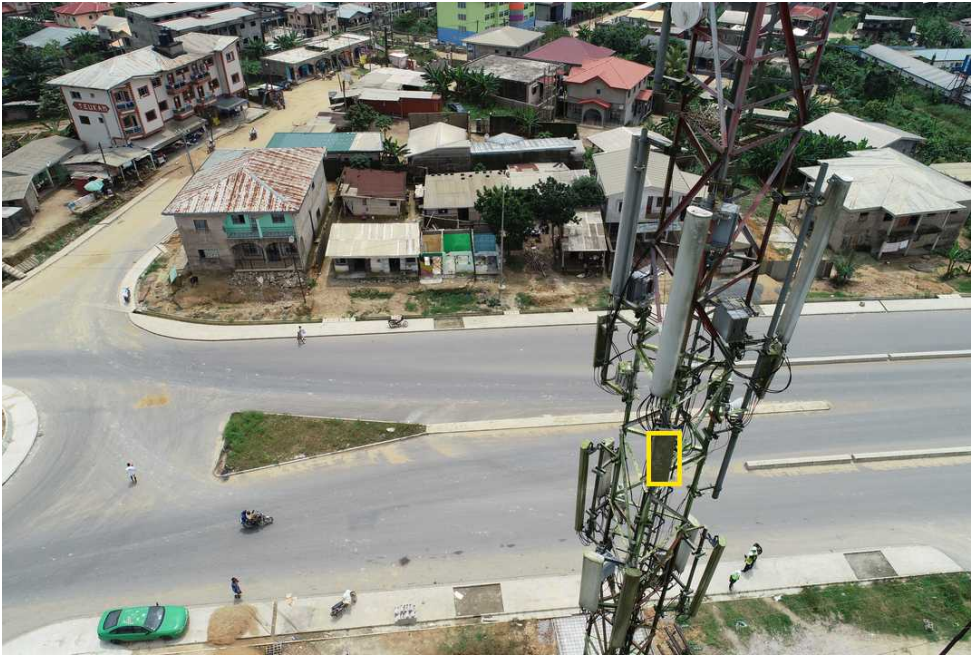


### **Annotation 51**

**Annotation type:** Uncategorised

**Severity level:** 3

**Description:** Rusted supports and screws



**DJI\_0431.JPG**

**Annotations: 1**

**Position:**

4.02005025,

9.80535997

**Altitude: 47.111 m**

**Yaw: +70.70°**

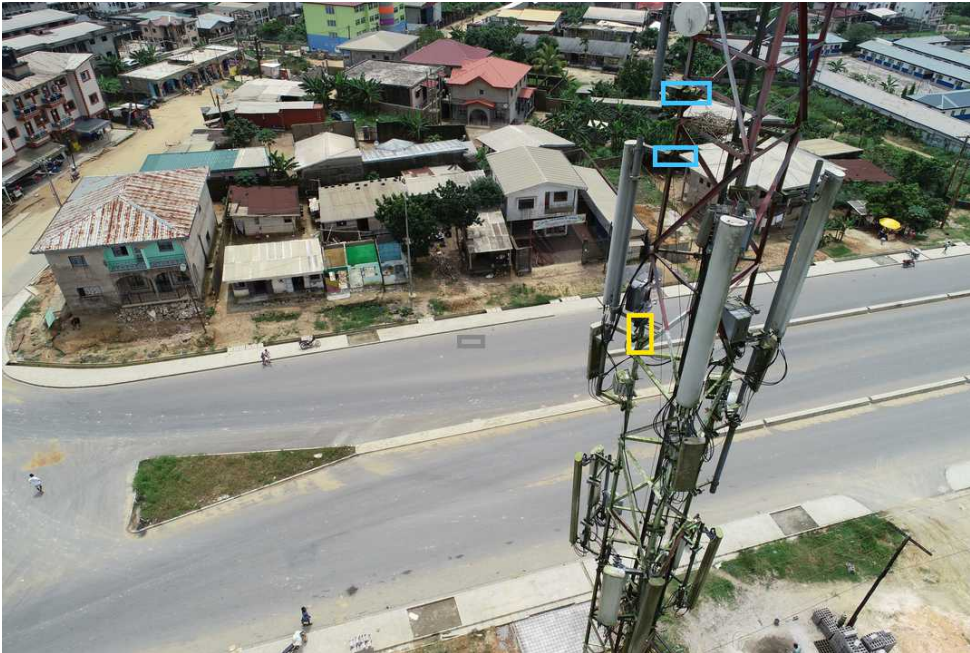


**Annotation 61**

**Annotation type: Uncategorised**

**Severity level: 3**

**Description: Antenna to be cleaned**



**DJI\_0434.JPG**

**Annotations: 4**

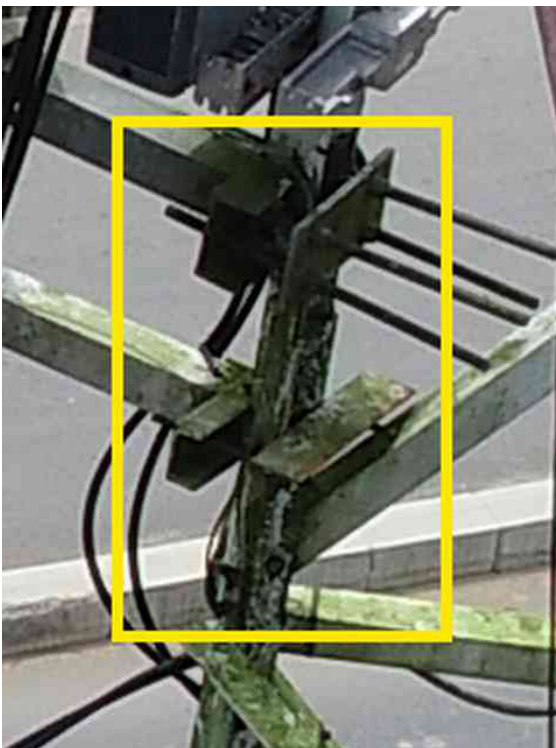
**Position:**

4.02006453,

9.80535814

**Altitude: 47.011 m**

**Yaw: +82.10°**



#### **Annotation 41**

**Annotation type: Rust**

**Severity level: 3**

**Description: Rusty support and screws**



#### **Annotation 42**

**Annotation type: Uncategorised**

**Severity level: 2**

**Description: Rusty support and screws**



### Annotation 43

**Annotation type:** Rust

**Severity level:** 2

**Description:** Rusted support and screws



### Annotation 64

**Annotation type:** Uncategorised

**Severity level:** Unknown

**Description:** Rust



**DJI\_0442.JPG**

**Annotations: 1**

**Position: 4.0201065,  
9.80536681**

**Altitude: 46.911 m**

**Yaw: +113.80°**



### **Annotation 62**

**Annotation type: Uncategorised**

**Severity level: 3**

**Description: Rusted support and  
screws**



**DJI\_0499.JPG**

**Annotations: 1**

**Position:**

4.02009072,

9.80551839

**Altitude:** 39.385 m

**Yaw:** -102.90°



### **Annotation 35**

**Annotation type:** Rust

**Severity level:** 2

**Description:** Rusted support, bar and screws



**DJI\_0500.JPG**

**Annotations: 1**

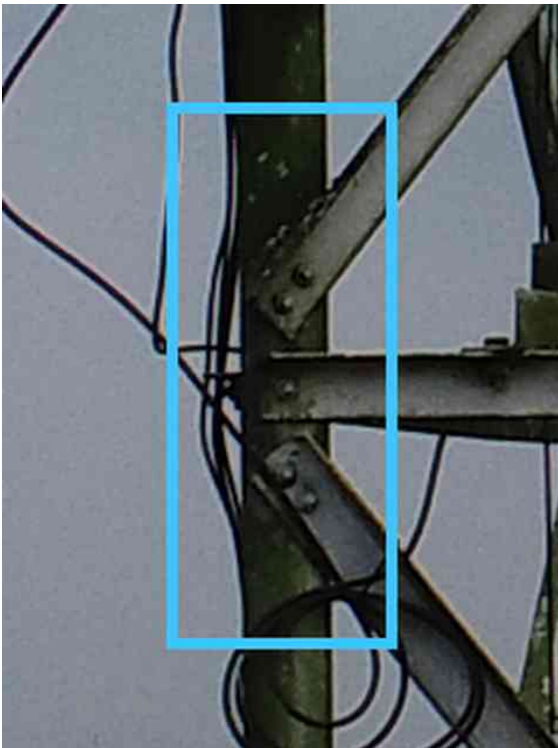
**Position:**

4.02006578,

9.80552181

**Altitude:** 39.585 m

**Yaw:** -85.50°



**Annotation 18**

**Annotation type:** Rust

**Severity level:** 2

**Description:** Rusted bar and screws



**DJI\_0505.JPG**

**Annotations: 1**

**Position:**

4.01999567,

9.80543389

**Altitude:** 39.685 m

**Yaw:** +3.60°



**Annotation 36**

**Annotation type:** Uncategorised

**Severity level:** 4

**Description:** Equipment to be cleaned



**DJI\_0519.JPG**

**Annotations: 2**

**Position:**

4.02006619,

9.80551625

**Altitude: 43.685 m**

**Yaw: -81.30°**



**Annotation 20**

**Annotation type: Rust**

**Severity level: 2**

**Description: Rusted screws**



**Annotation 21**

**Annotation type: Rust**

**Severity level: 2**

**Description: Rusted screws**



**DJI\_0531.JPG**

**Annotations: 3**

**Position:**

4.02001372,

9.80548431

**Altitude: 43.885 m**

**Yaw: -38.80°**



**Annotation 34**

**Annotation type: Rust**

**Severity level: 3**

**Description: Rusted screw**



**Annotation 31**

**Annotation type: Rust**

**Severity level: 2**

**Description: Rusted screw**



### Annotation 33

Annotation type: Uncategorised

Severity level: Unknown

Description:



**DJI\_0540.JPG**

**Annotations: 1**

**Position:**

4.02000114,

9.80544025

**Altitude: 43.785 m**

**Yaw: -2.70°**



### **Annotation 8**

**Annotation type: Uncategorised**

**Severity level: Unknown**

**Description:**



**DJI\_0662.JPG**

**Annotations: 1**

**Position:**

4.02000722,

9.80546797

**Altitude: 53.501 m**

**Yaw: -21.10°**



### **Annotation 16**

**Annotation type: Rust**

**Severity level: 3**

**Description: Rusted support and screws**



**DJI\_0663.JPG**

**Annotations: 1**

**Position:**

4.02000669,

9.805468

**Altitude: 51.301 m**

**Yaw: -20.70°**



**Annotation 63**

**Annotation type: Uncategorised**

**Severity level: 3**

**Description: Rusted antenna**



**DJI\_0664.JPG**

**Annotations: 4**

**Position:**

4.02000661,

9.80546817

**Altitude: 49.001 m**

**Yaw: -20.80°**



**Annotation 48**

**Annotation type: Uncategorised**

**Severity level: 4**

**Description: Rusted supports and screws**



#### Annotation 49

Annotation type: Uncategorised

Severity level: 4

Description: Rusted antenna support



#### Annotation 44

Annotation type: Rust

Severity level: 3

Description: Rusted support and screws



#### Annotation 47

Annotation type: Uncategorised

Severity level: 1

Description: Screw to tighten



**DJI\_0665.JPG**

**Annotations: 5**

**Position:**

4.02000669,

9.80546825

**Altitude: 46.601 m**

**Yaw: -20.80°**



### Annotation 57

**Annotation type:** Uncategorised

**Severity level:** 5

**Description:** Rusted screws and support



### Annotation 59

**Annotation type:** Rust

**Severity level:** 5

**Description:** Rust screw



### Annotation 60

Annotation type: Uncategorised

Severity level: 5

Description: Rusted screw

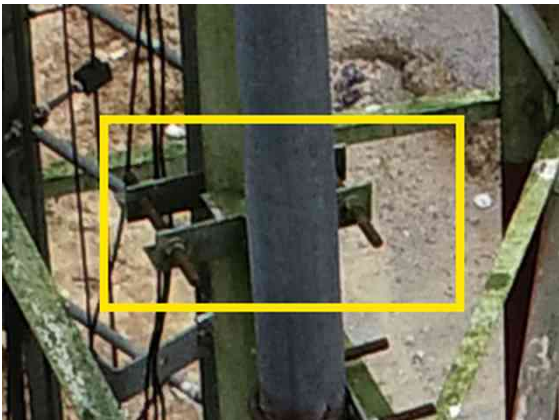


### Annotation 52

Annotation type: Rust

Severity level: 3

Description: Rusted screws

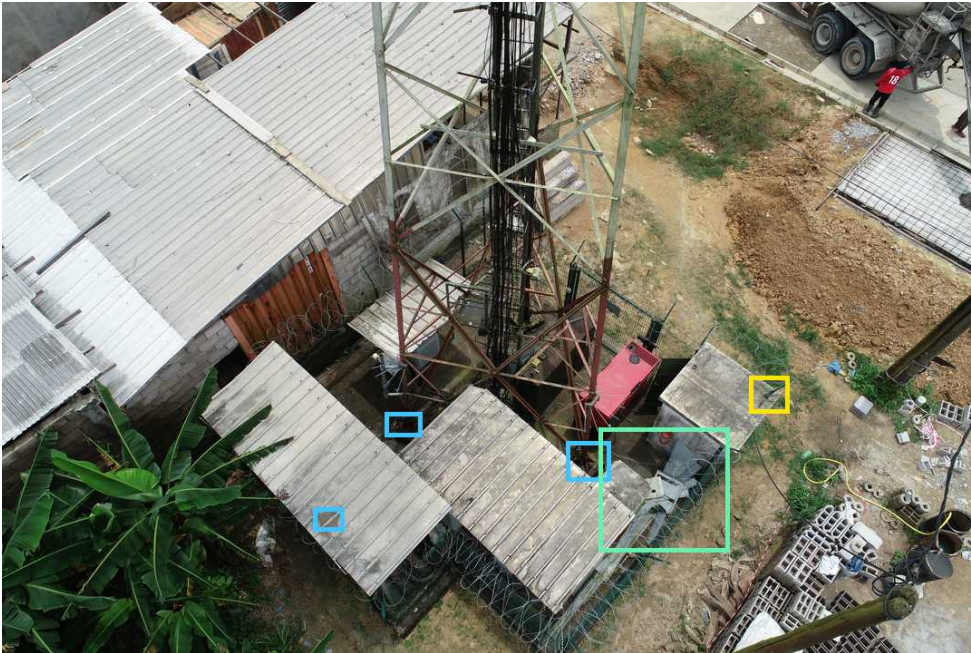


### Annotation 56

Annotation type: Rust

Severity level: 3

Description: Rusted screws



**DJI\_0674.JPG**

**Annotations:** 5

**Position:** 4.0200045,  
9.80542492

**Altitude:** 28.301 m

**Yaw:** +11.20°



**Annotation 30**

**Annotation type:** Uncategorised

**Severity level:** 3

**Description:** Rainwater that stagnates and may seep in



**Annotation 24**

**Annotation type:** Uncategorised

**Severity level:** 2

**Description:** Deformed roof and stagnant water



### Annotation 27

Annotation type: Uncategorised

Severity level: 2

Description: Moldy and rusted tower base concrete



### Annotation 28

Annotation type: Rust

Severity level: 2

Description: Moldy and rusted base concrete



### Annotation 29

Annotation type: Uncategorised

Severity level: 1

Description: Waste to be removed



**DJI\_0763.JPG**

**Annotations: 2**

**Position:**

4.02014414,

9.8054595

**Altitude: 28.101 m**

**Yaw: -164.80°**

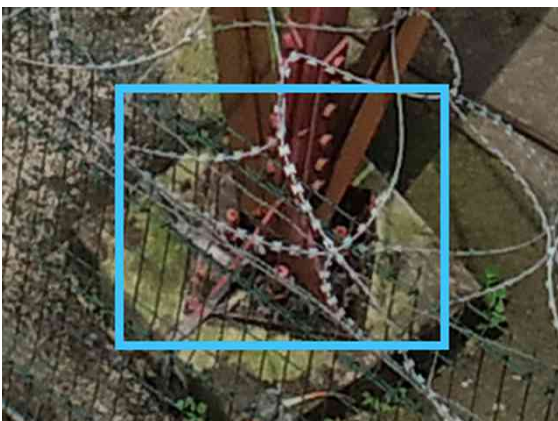


### **Annotation 10**

**Annotation type:** Rust

**Severity level:** 3

**Description:** Rusted equipment with stagnant water on top



### **Annotation 15**

**Annotation type:** Uncategorized

**Severity level:** 2

**Description:** Molded and rusted tower base concrete



**DJI\_0765.JPG**

**Annotations: 1**

**Position:**

4.02011969,

9.80549669

**Altitude: 30.701 m**

**Yaw: -129.40°**



**Annotation 37**

**Annotation type: Uncategorised**

**Severity level: 4**

**Description: Stagnant water close to electric cables**

# Inventory

ID	Antenna type	Page
Antenna PA5862	Panel	<a href="#">30</a>
Antenna PA5569	Panel	<a href="#">30</a>
Antenna PA5567	Panel	<a href="#">31</a>
Antenna PA5697	Panel	<a href="#">31</a>
Antenna PA6262	Panel	<a href="#">32</a>
Antenna PA5860	Panel	<a href="#">32</a>
Antenna PA5845	Panel	<a href="#">33</a>
Antenna MW345	Microwave	<a href="#">33</a>
Antenna MW259	Microwave	<a href="#">34</a>
Antenna PA5861	Panel	<a href="#">34</a>
Antenna PA6263	Panel	<a href="#">35</a>
Antenna PA6264	Panel	<a href="#">35</a>
Antenna PA5570	Panel	<a href="#">36</a>
Antenna PA5571	Panel	<a href="#">36</a>

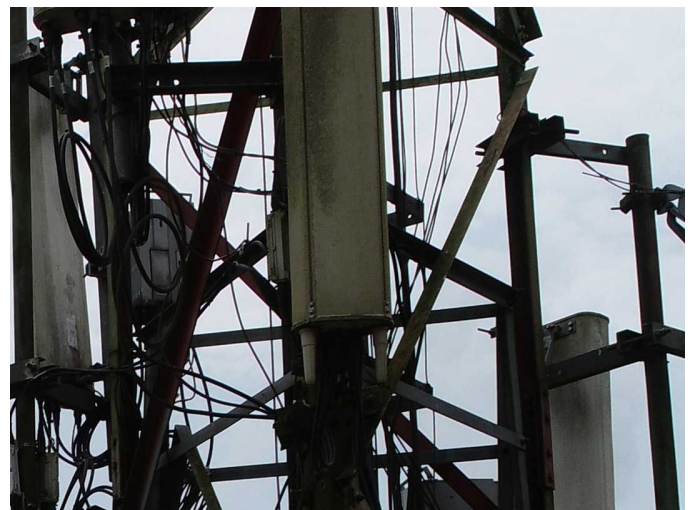
## Antenna PA5862

Type	Panel
Width	32.0 cm
Height	1.09 m
Depth	13.0 cm
Azimuth	244.59°
Downtilt	5.38°
Plumb	2.4°
Altitude	30.52 m
Frequencies	900 Hz
Model	GC21
Image	DJI_0507.JPG
Antenna status	ON



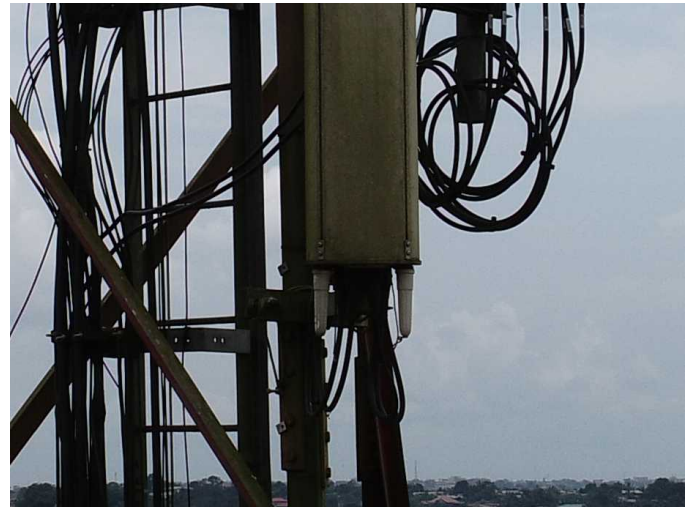
## Antenna PA5569

Type	Panel
Width	27.0 cm
Height	2.59 m
Depth	15.0 cm
Azimuth	242.8°
Downtilt	3.49°
Plumb	-0.52°
Altitude	26.53 m
Frequencies	700 Hz
Model	704521R0v06
Image	DJI_0618.JPG
Antenna status	ON



## Antenna PA5567

Type	Panel
Width	27.0 cm
Height	2.59 m
Depth	15.0 cm
Azimuth	158.22°
Downtilt	3.44°
Plumb	-0.7°
Altitude	25.05 m
Frequencies	900 Hz
Model	GF22
Image	DJI_0613.JPG
Antenna status	ON



## Antenna PA5697

Type	Panel
Width	29.0 cm
Height	2.73 m
Depth	19.0 cm
Azimuth	137.92°
Downtilt	2.36°
Plumb	1.42°
Altitude	32.65 m
Frequencies	900 Hz
Model	GF21
Image	DJI_0502.JPG
Antenna status	ON



## Antenna PA6262

Type	Panel
Width	36.0 cm
Height	1.54 m
Depth	18.0 cm
Azimuth	15.35°
Downtilt	3.1°
Plumb	0.58°
Altitude	26.82 m
Frequencies	2100 Hz
Model	A26451800v06
Image	DJI_0625.JPG
Antenna status	ON



## Antenna PA5860

Type	Panel
Width	31.0 cm
Height	1.09 m
Depth	14.0 cm
Azimuth	34.12°
Downtilt	2.73°
Plumb	1.09°
Altitude	30.52 m
Frequencies	900 Hz
Model	GC21
Image	DJI_0499.JPG
Antenna status	ON



## Antenna PA5845

Type	Panel
Width	29.0 cm
Height	2.72 m
Depth	18.0 cm
Azimuth	62.64°
Downtilt	-0.29°
Plumb	1.29°
Altitude	32.86 m
Frequencies	900 Hz
Model	A704521R0v06
Image	DJI_0499.JPG
Antenna status	ON



## Antenna MW345

Type	Microwave
Width	40.0 cm
Height	39.0 cm
Depth	21.0 cm
Azimuth	152.18°
Downtilt	0.81°
Plumb	0.0°
Altitude	29.52 m
Frequencies	28000 Hz
Model	RTN950
Image	DJI_0501.JPG
Antenna status	ON



## Antenna MW259

Type	Microwave
Width	41.0 cm
Height	41.0 cm
Depth	13.0 cm
Azimuth	283.13°
Downtilt	0.99°
Plumb	0.0°
Altitude	35.98 m
Frequencies	28000 Hz
Model	RTN950
Antenna status	ON

## Antenna PA5861

Type	Panel
Width	31.0 cm
Height	1.09 m
Depth	13.0 cm
Azimuth	136.38°
Downtilt	6.12°
Plumb	1.67°
Altitude	30.6 m
Frequencies	900 Hz
Model	GC21
Image	DJI_0500.JPG
Antenna status	ON



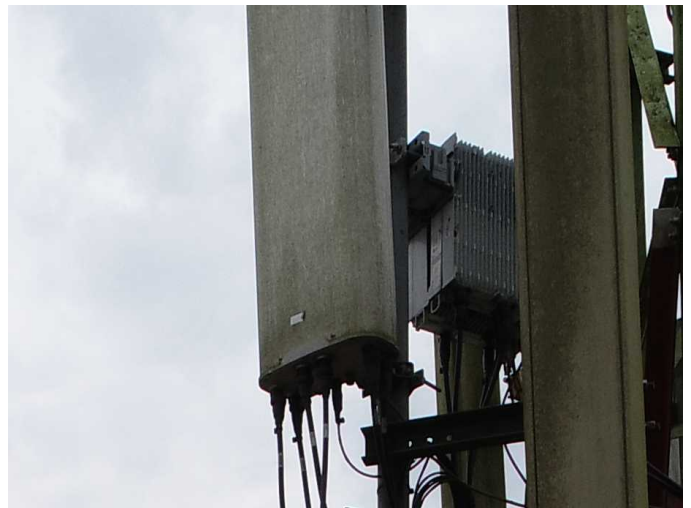
## Antenna PA6263

Type	Panel
Width	36.0 cm
Height	1.53 m
Depth	18.0 cm
Azimuth	118.13°
Downtilt	5.53°
Plumb	-0.6°
Altitude	25.36 m
Frequencies	2500 Hz, 2100 Hz
Model	A26451800v06
Image	DJI_0610.JPG
Antenna status	ON



## Antenna PA6264

Type	Panel
Width	36.0 cm
Height	1.53 m
Depth	18.0 cm
Azimuth	266.59°
Downtilt	0.82°
Plumb	0.61°
Altitude	27.01 m
Frequencies	2100 Hz
Model	A26451800v06
Image	DJI_0617.JPG
Antenna status	ON



## Antenna PA5570

Type	Panel
Width	29.0 cm
Height	2.69 m
Depth	19.0 cm
Azimuth	278.84°
Downtilt	0.45°
Plumb	-1.65°
Altitude	32.94 m
Frequencies	700 Hz
Model	704521R0v06
Image	DJI_0512.JPG
Antenna status	ON



## Antenna PA5571

Type	Panel
Width	27.0 cm
Height	2.57 m
Depth	16.0 cm
Azimuth	355.35°
Downtilt	1.2°
Plumb	0.22°
Altitude	26.65 m
Frequencies	700 Hz
Model	704521R0v06
Image	DJI_0624.JPG
Antenna status	ON

