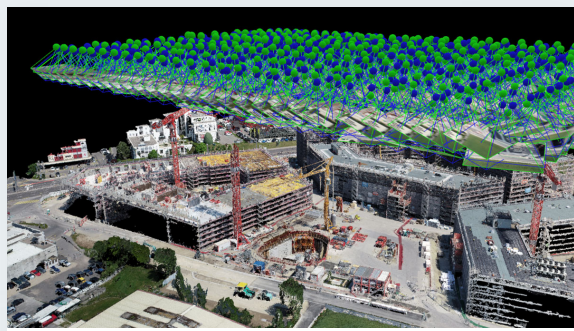




High-accuracy 3D modeling inside the Great Pyramid of Giza

Learn how Hitachi Systems and JEPICO partnered up to capture and document the inside of the Great Pyramid of Giza in Egypt, using Pix4Dmapper and a 100-million pixel ultra-high resolution camera.

[Read more](#)



Achieving cleaner point cloud even faster with Pix4Dmapper 4.5

Since the release of Pix4Dmapper 4.5 in March 2020, our users have had a chance to experience the fastest version of Pix4Dmapper yet. However, speed is not the only thing worth mentioning.

[Map faster](#)



Helping to find a solution to some of the world's biggest problems

In less than a decade, 90% of California's kelp forests have disappeared due to the climate change. One team is using Pix4Dreact to map what is left and figure out what to do next.

[Read more](#)



Happy birthday, Pix4Dfields!

June 7th marks the second birthday of Pix4Dfields, a milestone in Pix4D's agricultural journey. We would like to thank all of our users and partners, and wish happy birthday to Pix4Dfields! ☐

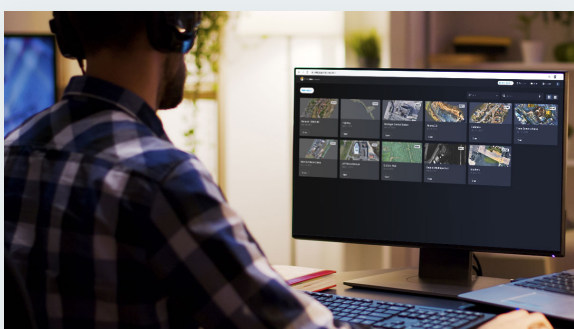
[See the evolution](#)



The future of accuracy is here: automatic GCP marking

Ground control points are critical for ensuring a project's accuracy. But marking GCPs is a time consuming manual process. Get to the result faster with Pix4D's newest feature, AutoGCPs.

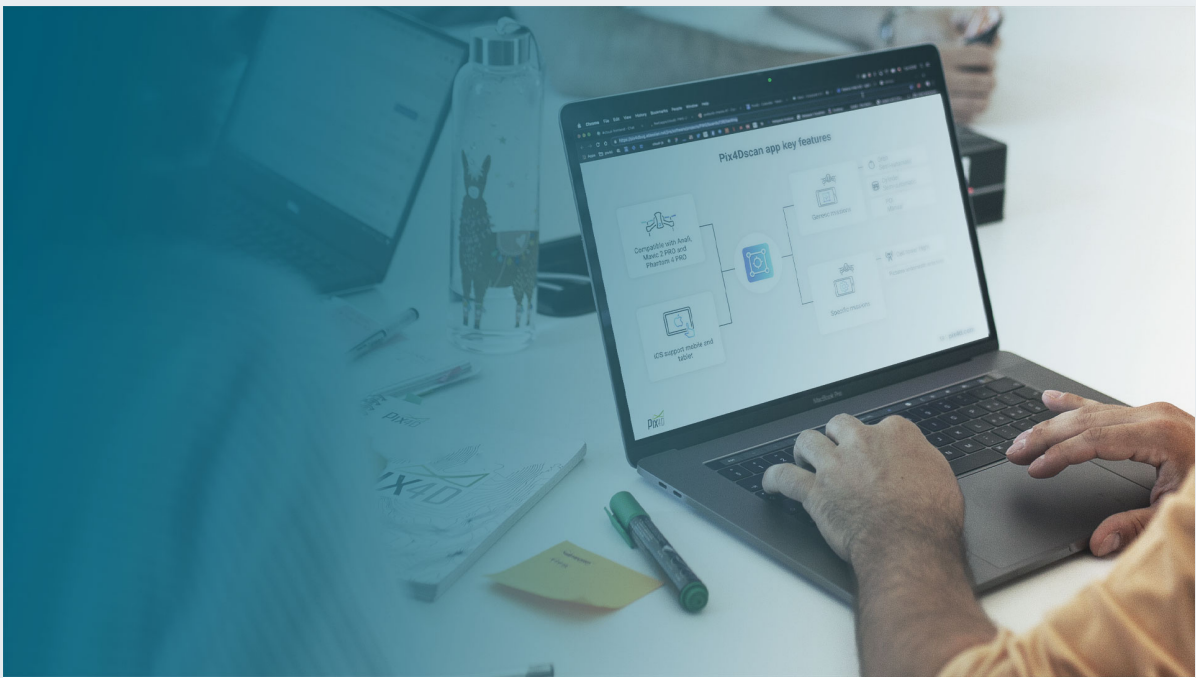
[Learn more](#)



Work only on the cloud: Meet Pix4Dcloud and Pix4Dcloud Advanced

Leverage Pix4D photogrammetry expertise online with Pix4Dcloud, the new stand-alone cloud platform running Pix4D's photogrammetry algorithms for mapping and modeling reality from images.

[Learn more](#)



Our webinars and ebooks

Browse our entire collection of webinars and ebooks and soak in all the information - also, keep an eye out for our next live event!

[Keep learning](#)

The tiepoint: links and more

- [Webinar in Spanish: Pix4Dmapper 4.5: la versión más eficaz y eficiente de Pix4Dmapper](#)
- [Digitalisation of tower companies with Telco asset management: A new era for 5G](#)
- [Creating a 3D model of the Pyramid Of Quetzalcoatl](#)